

NEET 2024 S5 Zoology Question Paper

ZOOLOGY

SECTION-A

1. Which of the following is not a component of the Fallopian tube?

- (A) Ampulla
 - (B) Uterine fundus
 - (C) Isthmus
 - (D) Infundibulum
-

2. Match List I with List II and choose the correct answer from the options given below:

	List I		List II
A.	Expiratory capacity	I.	Expiratory reserve volume + Tidal volume + Inspiratory reserve volume
B.	Functional residual capacity	II.	Tidal volume + Expiratory reserve volume
C.	Vital capacity	III.	Tidal volume + Inspiratory reserve volume
D.	Inspiratory capacity	IV.	Expiratory reserve volume + Residual volume

- (A) A-I, B-III, C-II, D-IV
 - (B) A-II, B-IV, C-I, D-III
 - (C) A-III, B-II, C-IV, D-I
 - (D) A-II, B-I, C-IV, D-III
-

3. Which of the following are Autoimmune disorders?

- A. Myasthenia gravis
- B. Rheumatoid arthritis
- C. Gout
- D. Muscular dystrophy
- E. Systemic Lupus Erythematosus (SLE)

Choose the most appropriate answer from the options given below:

- (A) C, D & E only
- (B) A, B & D only
- (C) A, B & E only
- (D) B, C & E only

4. Match List I (Sub Phases of Prophase I) with List II (Specific Characters) and choose the correct answer from the options given below:

List I (Sub Phases of Prophase I)	List II (Specific Characters)
A. Diakinesis	I. Synaptonemal complex formation
B. Pachytene	II. Completion of terminalisation of chiasmata
C. Zygotene	III. Chromosomes look like thin threads
D. Leptotene	IV. Appearance of recombination nodules

- (A) $A - IV, B - III, C - II, D - I$
- (B) $A - IV, B - II, C - III, D - I$
- (C) $A - I, B - II, C - IV, D - III$
- (D) $A - II, B - IV, C - I, D - III$

5. In both sexes of cockroach, a pair of jointed filamentous structures called anal cerci are present on:

- (A) 11th segment
- (B) 5th segment
- (C) 10th segment
- (D) 8th and 9th segment

6. Which one of the following factors will not affect the Hardy-Weinberg equilibrium?

- (A) Constant gene pool
 - (B) Genetic recombination
 - (C) Genetic drift
 - (D) Gene migration
-

7. Match List I with List II:

List I	Intrauterine Devices (IUDs) and Implants	List II	Examples
A.	Non-medicated IUD	I.	Multiload 375
B.	Copper releasing IUD	II.	Progestogens
C.	Hormone releasing IUD	III.	Lippes loop
D.	Implants	IV.	LNG-20

Choose the correct answer from the options given below:

- (A) A-III, B-I, C-IV, D-II
 - (B) A-III, B-I, C-II, D-IV
 - (C) A-I, B-III, C-IV, D-II
 - (D) A-IV, B-I, C-II, D-III
-

8. Match List I with List II :

List I	List II
A. Fibrous joints	I. Adjacent vertebrae, limited movement
B. Cartilaginous joints	II. Humerus and Pectoral girdle, rotational movement
C. Hinge joints	III. skull, don't allow any movement
D. Ball and socket joints	IV. Knee, help in locomotion

Choose the correct answer from the options given below:

- (A) A-III, B-I, C-IV, D-II

- (B) A-IV, B-II, C-III, D-I
(C) A-I, B-III, C-II, D-IV
(D) A-II, B-III, C-I, D-IV
-

9. Match List I with List II:

List I	List II
A. α -1 antitrypsin	I. Cotton bollworm
B. Cry IAb	II. ADA deficiency
C. Cry IAc	III. Emphysema
D. Enzyme replacement therapy	IV. Corn borer

Choose the correct answer from the options given below:

- (A) A-II, B-IV, C-I, D-III
(B) A-II, B-I, C-IV, D-III
(C) A-III, B-I, C-II, D-IV
(D) A-III, B-IV, C-I, D-II
-

10. Which of the following factors are favourable for the formation of oxyhaemoglobin in alveoli?

- (A) Low $p\text{CO}_2$ and High temperature
(B) High $p\text{O}_2$ and High $p\text{CO}_2$
(C) High $p\text{O}_2$ and Lesser H^+ concentration
(D) Low $p\text{CO}_2$ and High H^+ concentration
-

11. Given below are two statements: one is labeled as Assertion (A) and the other as Reason (R):

Assertion A: FSH acts upon ovarian follicles in females and Leydig cells in males.

Reason R: Growing ovarian follicles secrete estrogen in females, while interstitial cells secrete androgen in male human beings.

In the light of the above statements, choose the correct answer from the options given below:

- (A) A is false but R is true
(B) Both A and R are true and R is the correct explanation of A

- (C) Both A and R are true but R is NOT the correct explanation of A
(D) A is true but R is false
-

12. Match List I with List II:

List I	List II
A. Pons	I. Provides additional space for Neurons, regulates posture and balance.
B. Hypothalamus	II. Controls respiration and gastric secretions.
C. Medulla	III. Connects different regions of the brain.
D. Cerebellum	IV. Neuro secretory cells.

Choose the correct answer from the options given below

- (A) A-II, B-I, C-III, D-IV
(B) A-II, B-III, C-I, D-IV
(C) A-III, B-IV, C-II, D-I
(D) A-I, B-III, C-II, D-IV
-

13. Match List I with List II:

List I	List II
A. Axoneme	I. Centriole
B. Cartwheel pattern	II. Cilia and flagella
C. Crista	III. Chromosome
D. Satellite	IV. Mitochondria

Choose the correct answer from the options given below:

- (A) A-II, B-I, C-IV, D-III
(B) A-IV, B-III, C-II, D-I
(C) A-IV, B-II, C-III, D-I
(D) A-II, B-IV, C-I, D-III
-

14. Match List I with List II:

List I	List II
A. <i>Pterophyllum</i>	I. Hag fish
B. <i>Myxine</i>	II. Saw fish
C. <i>Pristis</i>	III. Angel fish
D. <i>Exocoetus</i>	IV. Flying fish

Choose the correct answer from the options given below:

- (A) A-III, B-II, C-I, D-IV
- (B) A-II, B-I, C-III, D-IV
- (C) A-III, B-I, C-II, D-IV
- (D) A-IV, B-I, C-II, D-III

15. Which one is the correct product of DNA dependent RNA polymerase to the given template?

3' TACATGGCAAATATCCATTCA 5'

- (A) 5'ATGTACCGTTTAAGGTAAGT3'
- (B) 5'AUGUACCGUUUAUAGGUAAGU3'
- (C) 5'AUGUAAAGUUUAUAGGUAAGU3'
- (D) 5'AUGUACCGUUUAUAGGGAAGU3'

16. Given below are two statements:

Statement I: The presence or absence of hymen is not a reliable indicator of virginity.

Statement II: The hymen is torn during the first coitus only.

In the light of the above statements, choose the correct answer from the options given below:

- (A) Statement I is false but Statement II is true
- (B) Both Statement I and Statement II are true
- (C) Both Statement I and Statement II are false
- (D) Statement I is true but Statement II is false

17. Match List I with List II:

List I	List II
A. Lipase	I. Peptide bond
B. Nuclease	II. Ester bond
C. Protease	III. Glycosidic bond
D. Amylase	IV. Phosphodiester bond

Choose the correct answer from the options given below :

- (A) A-IV, B-I, C-III, D-II
- (B) A-IV, B-II, C-III, D-I
- (C) A-III, B-II, C-I, D-IV
- (D) A-II, B-IV, C-I, D-III

18. Given below are two statements: One is labelled as Assertion (A) and the other is labelled as Reason (R):

Assertion A: Breast-feeding during the initial period of infant growth is recommended by doctors for bringing a healthy baby.

Reason R: Colostrum contains several antibodies absolutely essential to develop resistance for the newborn baby.

In the light of the above statements, choose the most appropriate answer from the options given below:

- (A) A is not correct but R is correct
- (B) Both A and R are correct and R is the correct explanation of A
- (C) Both A and R are correct but R is NOT the correct explanation of A
- (D) A is correct but R is not correct

19. The flippers of the Penguins and Dolphins are an example of the:

- (A) Divergent evolution
- (B) Adaptive radiation
- (C) Natural selection
- (D) Convergent evolution

20. Match List I with List II:

List I	List II
A. Cocaine	I. <i>Effective sedative in surgery</i>
B. Heroin	II. <i>Cannabis sativa</i>
C. Morphine	III. <i>Erythroxylum</i>
D. Marijuana	IV. <i>Papaver somniferum</i>

Choose the correct answer from the options given below:

(A) A-III, B-IV, C-I, D-II

(B) A-IV, B-III, C-I, D-II

(C) A-I, B-III, C-II, D-IV

(D) A-II, B-I, C-III, D-IV

21. Match List I with List II:

List I	List II
A. Common cold	I. <i>Plasmodium</i>
B. Haemozoin	II. Typhoid
C. Widal test	III. Rhinoviruses
D. Allergy	IV. Dust mites

Choose the correct answer from the options given below:

(A) A-IV, B-II, C-III, D-I

(B) A-II, B-IV, C-III, D-I

(C) A-I, B-III, C-II, D-IV

(D) A-III, B-I, C-II, D-IV

22. Match List I with List II:

List I (Genetic Disorders)	List II(Chromosomal Association)
A. Down's syndrome	I. 11 st chromosome
B. α -Thalassemia	II. 'X' th chromosome
C. β -Thalassemia	III. 21 th chromosome
D. Klinefelter's syndrome	IV. 16 chromosome

Choose the correct answer from the options given below:

- (A) A-IV, B-I, C-II, D-III
 - (B) A-I, B-II, C-III, D-IV
 - (C) A-II, B-III, C-IV, D-I
 - (D) A-III, B-IV, C-I, D-II
-

23. Match List I with List II:

List I	List II
A. Typhoid	I. Fungus
B. Leishmaniasis	II. Nematode
C. Ringworm	III. Protozoa
D. Filariasis	IV. Bacteria

- (A) A-II, B-IV, C-III, D-I
- (B) A-I, B-III, C-II, D-IV
- (C) A-IV, B-III, C-I, D-II
- (D) A-III, B-I, C-IV, D-II

Choose the correct answer from the options given below:

24. Following are the stages of the pathway for conduction of an action potential through the heart:

- A. AV bundle
- B. Purkinje fibres
- C. AV node
- D. Bundle branches
- E. SA node

Choose the correct sequence of the pathway from the options given below:

- (A) E-A-D-B-C
 - (B) E-C-A-D-B
 - (C) A-E-C-B-D
 - (D) B-D-E-C-A
-

25. Following are the stages of cell division:

- A. Gap 2 (G_2) phase
- B. Cytokinesis
- C. Synthesis (S) phase
- D. Karyokinesis
- E. Gap 1 (G_1) phase

Choose the correct sequence of stages from the options given below:

- (A) E-C-A-D-B
 - (B) C-E-D-A-B
 - (C) E-B-D-A-C
 - (D) B-D-E-A-C
-

26. Match List I with List II and choose the correct answer from the options given below:

List I	List II
A. Pleurobrachia	I. Mollusca
B. Radula	II. Ctenophora
C. Stomochord	III. Osteichthyes
D. Air bladder	IV. Hemichordata

Choose the correct answer from the options given below:

- (A) A-IV, B-III, C-II, D-I
 - (B) A-IV, B-II, C-III, D-I
 - (C) A-II, B-I, C-IV, D-III
 - (D) A-II, B-IV, C-I, D-III
-

27. Which of the following is not a steroid hormone?

- (A) Glucagon
 - (B) Cortisol
 - (C) Testosterone
 - (D) Progesterone
-

28. The “Ti plasmid” of *Agrobacterium tumefaciens* stands for:

- (A) Temperature independent plasmid
 - (B) Tumour inhibiting plasmid
 - (C) Tumor independent plasmid
 - (D) Tumor inducing plasmid
-

29. Given below are some stages of human evolution.

Arrange them in the correct sequence (Past to Recent):

- A. *Homo habilis*
- B. *Homo sapiens*
- C. *Homo neanderthalensis*
- D. *Homo erectus*

Choose the correct sequence of human evolution from the options given below:

- (A) A-D-C-B
 - (B) D-A-C-B
 - (C) B-A-D-C
 - (D) C-B-D-A
-

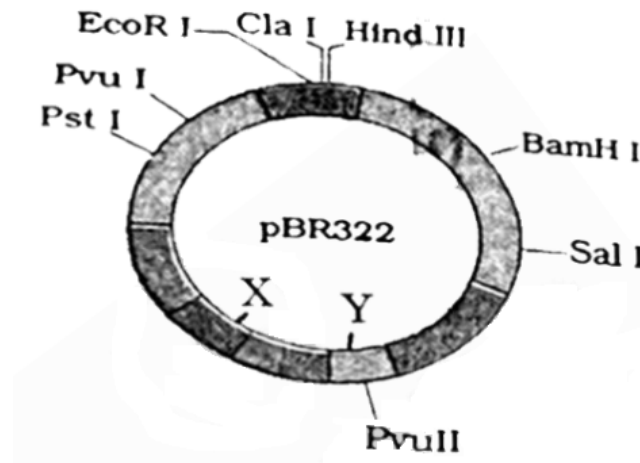
30. Consider the following statements:

- A. Annelids are true coelomates
- B. Poriferans are pseudocoelomates
- C. Aschelminthes are acoelomates
- D. Platyhelminthes are pseudocoelomates

Choose the correct answer from the options given below:

- (A) D only
 - (B) B only
 - (C) A only
 - (D) C only
-

31. The following diagram shows restriction sites in *E. coli* cloning vector pBR322. Find the role of 'X' and 'Y' genes:



- (A) Gene 'X' is responsible for recognition sites and 'Y' is responsible for antibiotic resistance.
- (B) The gene 'X' is responsible for resistance to antibiotics and 'Y' for protein involved in the replication of plasmid.
- (C) The gene 'X' is responsible for controlling the copy number of the linked DNA and 'Y' for protein involved in the replication of plasmid.
- (D) The gene 'X' is for protein involved in replication of plasmid and 'Y' for resistance to antibiotics.
-

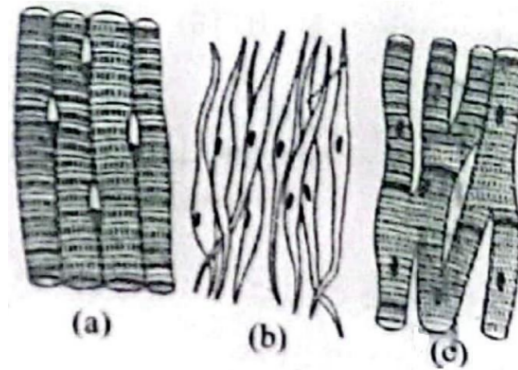
32. Which of the following is not a natural/traditional contraceptive method?

- (A) Vaults
- (B) Coitus interruptus
- (C) Periodic abstinence
- (D) Lactational amenorrhea
-

33. Which of the following statements is incorrect?

- (A) Bio-reactors have an agitator system, an oxygen delivery system and foam control system.
- (B) A bio-reactor provides optimal growth conditions for achieving the desired product.
- (C) Most commonly used bio-reactors are of stirring type.
- (D) Bio-reactors are used to produce small scale bacterial cultures.
-

34. Three types of muscles are given as (a), (b), and (c). Identify the correct matching pair along with their location in the human body:



Name of muscle/location:

- (A) (a) Involuntary – Nose tip
(b) Skeletal – Bone
(c) Cardiac – Heart
- (B) (a) Smooth – Toes
(b) Skeletal – Legs
(c) Cardiac – Heart
- (C) (a) Skeletal – Triceps
(b) Smooth – Stomach
(c) Smooth – Heart
- (D) (a) Skeletal – Biceps
(b) Involuntary – Intestine
(c) Cardiac – Heart

35. Given below are two statements:

Statement I: In the nephron, the descending limb of the loop of Henle is impermeable to water and permeable to electrolytes.

Statement II: The proximal convoluted tubule is lined by simple columnar brush border epithelium and increases the surface area for reabsorption.

In the light of the above statements, choose the correct answer from the options given below:

- (A) Statement I is false but Statement II is true
(B) Both Statement I and Statement II are true

- (C) Both Statement I and Statement II are false
(D) Statement I is true but Statement II is false
-

SECTION-B

36. Given below are two statements:

Statement I: Bone marrow is the main lymphoid organ where all blood cells including lymphocytes are produced.

Statement II: Both bone marrow and thymus provide microenvironments for the development and maturation of T-lymphocytes.

In the light of the above statements, choose the most appropriate answer from the options given below:

- (A) Statement I is incorrect but Statement II is correct.
(B) Both Statement I and Statement II are correct.
(C) Both Statement I and Statement II are incorrect.
(D) Statement I is correct but Statement II is incorrect.
-

37. Given below are two statements:

Statement I: Mitochondria and chloroplasts both double membranes bound organelles.

Statement II: Inner membrane of mitochondria is relatively less permeable, as compared to chloroplast.

In the light of the above statements, choose the most appropriate answer from the options given below:

- (A) Statement I is incorrect but Statement II is correct.
(B) Both Statement I and Statement II are correct.
(C) Both Statement I and Statement II are incorrect.
(D) Statement I is correct but Statement II is incorrect.
-

38. Match List I with List II:

List I	List II
A. Mesozoic Era	I. Lower invertebrates
B. Proterozoic Era	II. Fish & Amphibia
C. Cenozoic Era	III. Birds & Reptiles
D. Paleozoic Era	IV. Mammals

Choose the correct answer from the options given below:

- (A) A-III, B-I, C-IV, D-II
 - (B) A-II, B-I, C-III, D-IV
 - (C) A-III, B-I, C-IV, D-IV
 - (D) A-I, B-II, C-IV, D-III
-

39. Given below are two statements:

Statement I: Gause's competitive exclusion principle states that two closely related species competing for different resources cannot exist indefinitely.

Statement II: According to Gause's principle, during competition, the inferior species will be eliminated if resources are limited.

In the light of the above statements, choose the correct answer from the options given below:

- (A) Statement I is false but Statement II is true.
 - (B) Both Statement I and Statement II are true.
 - (C) Both Statement I and Statement II are false.
 - (D) Statement I is true but Statement II is false.
-

40. Regarding catalytic cycle of an enzyme action, select the correct sequential steps:

- A. Substrate enzyme complex formation.
- B. Free enzyme ready to bind with another substrate.
- C. Release of products.
- D. Chemical bonds of the substrate broken.
- E. Substrate binding to active site.

Choose the correct answer from the options given below:

- (A) E, D, C, B, A
 (B) E, A, D, C, B
 (C) A, E, B, D, C
 (D) B, A, C, D, E
-

41. Match List I with List II:

	List I		List II
A.	P wave	I.	Heart muscles are electrically silent.
B.	QRS complex	II.	Depolarisation of ventricles.
C.	T wave	III.	Depolarisation of atria.
D.	T-P gap	IV.	Repolarisation of ventricles.

Choose the correct answer from the options given below:

- (A) A-IV, B-II, C-I, D-III
 (B) A-I, B-III, C-IV, D-II
 (C) A-III, B-II, C-IV, D-I
 (D) A-II, B-III, C-I, D-IV
-

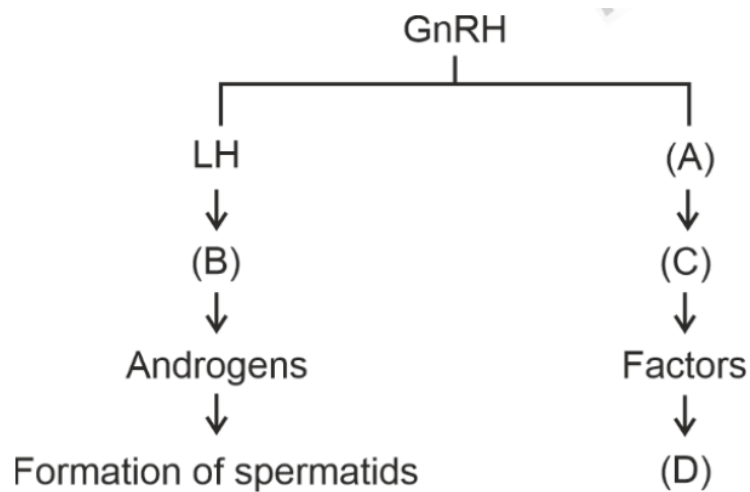
42. Match List I with List II:

List I	Description	List II	Description
A.	RNA polymerase III	I.	snRNPs
B.	Termination of transcription	II.	Promoter
C.	Splicing of Exons	III.	Rho factor
D.	TATA box	IV.	SnRNAs, tRNA

Choose the correct answer from the options given below:

- (A) A-IV, B-III, C-I, D-II
(B) A-II, B-IV, C-I, D-III
(C) A-III, B-II, C-IV, D-I
(D) A-III, B-IV, C-I, D-II

43. Identify the correct Option (A), (B), (C), and (D) with respect to spermatogenesis.



- (A) ICSH, Leydig cells, Sertoli cells, spermatogenesis.
(B) FSH, Leydig cells, Sertoli cells, spermiogenesis.
(C) ICSH, Interstitial cells, Leydig cells, spermiogenesis.
(D) FSH, Sertoli cells, Leydig cells, spermatogenesis.

44. The following are the statements about non-chordates:

- A.** Pharynx is perforated by gill slits.

- B.** Notochord is absent.
- C.** Central nervous system is dorsal.
- D.** Heart is dorsal if present.
- E.** Post anal tail is absent.

Choose the most appropriate answer from the options given below:

- (A) B, C & D only
 - (B) A & C only
 - (C) A, B & D only
 - (D) B, D & E only
-

45. Choose the correct statement given below regarding juxta medullary nephron.

- (A) Juxta medullary nephrons outnumber the cortical nephrons.
- (B) Juxta medullary nephrons are located in the columns of Bertini.
- (C) Renal corpuscle of juxta medullary nephron lies in the outer portion of the renal medulla.
- (D) Loop of Henle of juxta medullary nephron runs deep into medulla.

46. Given below are two statements:

Statement I: The cerebral hemispheres are connected by a nerve tract known as corpus callosum.

Statement II: The brain stem consists of the medulla oblongata, pons, and cerebrum.

In the light of the above statements, choose the most appropriate answer from the options given below:

- (A) Statement I is incorrect but Statement II is correct.
- (B) Both Statement I and Statement II are correct.
- (C) Both Statement I and Statement II are incorrect.
- (D) Statement I is correct but Statement II is incorrect.

47. Match List I with List II related to the digestive system of cockroach:

List I	List II
A. The structures used for storing of food	I. Gizzard
B. Ring of 6-8 blind tubules at junction of foregut and midgut.	II. Gastric Caeca
C. Ring of 100-150 yellow coloured thin filaments at junction of midgut and hindgut.	III. Malpighian tubules
D. The structures used for grinding the food.	IV. Crop

Choose the correct answer from the options given below:

- (A) A-III, B-II, C-IV, D-I
- (B) A-IV, B-II, C-III, D-I

(C) A-I, B-II, C-III, D-IV

(D) A-IV, B-III, C-II, D-I

48. Match List I with List II:

List I	Epithelial Type	List II	Associated Organ
A.	Unicellular glandular epithelium	I.	Salivary glands
B.	Compound epithelium	II.	Pancreas
C.	Multicellular glandular epithelium	III.	Goblet cells of alimentary canal
D.	Endocrine glandular epithelium	IV.	Moist surface of buccal cavity

Choose the correct answer from the options given below:

(A) A-II, B-I, C-IV, D-III

(B) A-I, B-III, C-III, D-IV

(C) A-IV, B-III, C-I, D-II

(D) A-III, B-IV, C-I, D-II

49. As per ABO blood grouping system, the blood group of father is B⁺, mother is A⁺ and child is O⁺. Their respective genotype can be:

A. $I^B I^A / ii$

B. $I^B I^B / I^A ii$

C. $I^A I^B / I^A I^B$

D. $I^A i / I^B I^A$

E. $ii I^B / I^A I^B$

Choose the most appropriate answer from the options given below:

(A) D & E only

(B) A only

(C) B only

(D) C & B only

50. Match List I with List II:

	List I		List II
A.	Exophthalmic goiter	I.	Excess secretion of cortisol, moon face & hyperglycemia.
B.	Acromegaly	II.	Hypo-secretion of thyroid hormone and stunted growth.
C.	Cushing's syndrome	III.	Hyper secretion of thyroid hormone & protruding eye balls.
D.	Cretinism	IV.	Excessive secretion of growth hormone.

Choose the correct answer from the options given below:

- (A) A-III, B-IV, C-I, D-II
 - (B) A-I, B-III, C-II, D-IV
 - (C) A-IV, B-II, C-I, D-III
 - (D) A-III, B-IV, C-II, D-I
-