



Practice, Learn and Achieve
Your Goal with Prepp

RRB NTPC Exam

Previous Paper

Simplifying
Government Exams



SSC CHSL



IAS EXAM



RRB NTPC



NTSE



CDS



SSC CGL



CBSE UGC NET



IBPS PO



NDA



SBI PO



IBPS CLERK



AFCAT



SSC JE



CTET



CSIR UGC NET



CAPF



IBPS RRB

www.prepp.in

1. In 2016 world's first, fastest reactive anti-rabies vaccine was launched in which country?

- (A) India
- (B) England
- (C) South Africa
- (D) Germany

- A. (B)
- B. (A)
- C. (D)
- D. (C)

Ans. B

Sol.

* **The first fast-acting anti-rabies drug of the world** which instantly deactivates the rabies virus and provides immediate protection in severe dog bite cases is set for a launch in India in 2016.

* The drug, rabies human monoclonal antibody (RMAb) has been developed by Pune-based Serum Institute of India (SII) and US-based Mass Biologics of the University of Massachusetts Medical School.

2. Saffron is produced in which of the following Indian states

- (A) Jammu and Kashmir
- (B) Uttar Pradesh
- (C) Assam
- (D) Sikkim

- A. (B)
- B. (A)
- C. (C)
- D. (D)

Ans. B

Sol.

* **Saffron is produced in Jammu and Kashmir.**

* Saffron (*Crocus sativus*) is a slender, dried, reddish brown, flattened stigma of cultivated saffron plant. It has various names such as Kesar, Zafran, Kang Posh etc.

* The diverse climatic conditions, fertile soil, sub-tropical, semi-temperate, temperate and arid climatic conditions in the state offer an immense scope for cultivation of saffron.

3. If $A = 1$ and $EAT = 26$ then $SEAT = ?$

- (A) 45
- (B) 44
- (C) 46

(D) 47

- A. (B)
- B. (C)
- C. (A)
- D. (D)

Ans. C

Sol.

The values are given as per the alphabetical place.

$A = 1$

$EAT = 26$ (Sum of their place values)

$E = 5$

$A = 1$

$T = 20$

$EAT = 5 + 1 + 20 = 26$

Therefore, $SEAT = 19 + 5 + 1 + 20 = 45$

option C is correct response.

4. A certain amount is invested at a certain simple interest rate for a period of 6 years. If the amount is invested at 3% more rate then it has fetched Rs 900 more. Find the principle Amount.

- (A) Rs 3500
- (B) Rs 4000
- (C) Rs 4500
- (D) Rs 5000

- A. (D)
- B. (B)
- C. (C)
- D. (A)

Ans. A

Sol.

If the rate is increased by 3%

Then simple interest for 6 years is

increased by $= 6 \times 3 = 18\%$

If,

$18\% = \text{Rs. } 90$

$100\% = 100 \times 900 / 18 = \text{Rs. } 5000$

5. After the Program is used by the users/the creators.

Which of the following program can't be modified in computer

- (A) EPROM
- (B) ROM
- (C) EEPROM
- (D) ROM

- A. (D)
- B. (B)
- C. (C)
- D. (A)

Ans. A

Sol.

Read-only memory (ROM) is a type of non-volatile memory used in computers and other electronic devices.

* Data stored in ROM cannot be electronically modified after the manufacture of the memory device.

6. What does CRISPR mean?

- (A) Categorically Regularly Interspaced Short Palindromic
- (B) Categorically Regularly Interspaced Short Palindromic Repeats
- (C) Clustered Regularly Interspaced Short Palindromic Repeats
- (D) Categorically Regularly Interspaced Short Palindromic Repeats

- A. (B)
- B. (A)
- C. (C)
- D. (D)

Ans. C

Sol.

CRISPR means clustered regularly interspaced short palindromic repeats.

* It is a family of DNA sequences found within the genomes of prokaryotic organisms.

* Cas9 enzymes together with CRISPR sequences form the basis of a technology known as CRISPR-Cas9 that can be used to edit genes within organisms.

7. What will be the amount after 2 years when a principle of Rs 80,000 is given at 20% compounded half yearly?

- (A) Rs 97,240
- (B) Rs 117,128
- (C) Rs 115,200
- (D) Rs 120,000

- A. (D)
- B. (A)
- C. (B)
- D. (C)

Ans. C

Sol.

Rate of interest per half year = 10%

Time taken = 2 year = 4 half years

Amount = $P(1+r/100)^t$

Amount = $80000(1+10/100)^4$ = Rs. 117128

8. Statements and conclusions are given below. Consider these statements as true however they might not match with the general facts and decide which conclusion follows the statement.

Statement

Ranjeet was insulted by his supervisor in front of his colleagues

Conclusion

I. Supervisor doesn't like Ranjeet

II. Ranjeet was popular among his colleagues.

- (A) Only conclusion I follows
- (B) Only conclusion II follows
- (C) Both conclusion I and II follows
- (D) Neither conclusion I nor II follows

- A. (D)
- B. (C)
- C. (B)
- D. (A)

Ans. A

Sol.

Ranjeet was insulted by his supervisor because he might have done something wrong. The clear reason is not mentioned in the statement.

Hence, none of the conclusion follow.

9. If HEALTH is coded as IDBKUG then HOSPITAL is coded as

- (A) IQUQKRBK
- (B) IMTNJRBJ
- (C) IPTQJUBM
- (D) INTOJSBK

- A. (D)
- B. (A)
- C. (B)
- D. (C)

Ans. A

Sol.

H	E	A	L	T	H
+1	-1	+1	-1	+1	-1
I	D	B	K	U	G

Similarly,

H	O	S	P	I	T	A	L
+1	-1	+1	-1	+1	-1	+1	-1
I	N	T	O	J	S	B	K

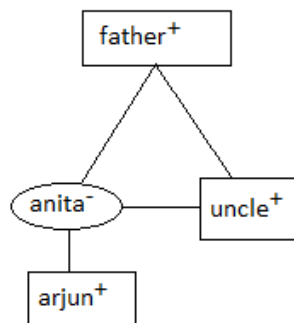
Option A is correct.

10. Anita is the only daughter of Arjun's Maternal uncle's father. How Anita is related with Arjun?

- (A) Sister
(B) Mother
(C) Paternal Aunt
(D) Daughter

- A. (B)
B. (A)
C. (D)
D. (C)

Ans. A
Sol.



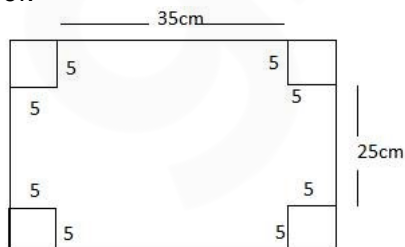
From the above figure, it is clear that Anita is mother of arjun.

11. Four square of 5 cm length were cut from corners of a rectangular plate of dimension 45 cm × 35 cm. From the remaining plate an open box is made. Find the volume of the box.

- (A) 1200 cm³
(B) 872cm³
(C) 1325 cm³
(D) 4375 cm³

- A. (C)
B. (B)
C. (D)
D. (A)

Ans. C
Sol.



Length of the remaining box = $45 - 5 \times 2 = 35$

Breadth of the remaining box = $35 - 5 \times 2 = 25$

Volume of the box = $35 \times 25 \times 5 = 4375 \text{ cm}^3$

12. If STUDENT is coded as NVPFZPO then TEACHER is Coded as:

- (A) OGVECGM
(B) OZVXCBM
(C) VGCEJGT
(D) VZCXJBT

- A. (A)
B. (D)
C. (C)
D. (B)

Ans. A
Sol.

S	T	U	D	E	N	T
-5	+2	-5	+2	-5	+2	-5
N	V	P	F	Z	P	O

Similarly,

T	E	A	C	H	E	R
-5	+2	-5	+2	-5	+2	-5
O	G	V	E	C	G	M

Hence, the correct answer is option A

13. Who was the chief architect of Indian Parliament situated in New Delhi

- (A) Sir Edwin Lutens and Sir Herbert Baker
(B) Duke of Connaught
(C) Sir John Archer and Sir Edward Batley
(D) Sir Claude Batley and Sir John Begg)

- A. (B)
B. (D)
C. (C)
D. (A)

Ans. B
Sol.

* House of Parliament was designed by the British **architects Sir Edwin Lutyens and Sir Herbert Baker in 1912-1913.**

* Construction of the Parliament House began in 1921 and it was completed in 1927.

14. Brahmaputra river doesn't flow from which of the following countries?

- (A) China
(B) Bangladesh

- (C) India
(D) Nepal
A. (B)
B. (D)
C. (C)
D. (A)

Ans. B

Sol.

* **The Brahmaputra** is a trans-boundary river which flows through China, India and Bangladesh.
* It is the ninth largest river in the world by discharge, and the 15th longest.
* It has its origin in the Manasarovar Lake region.

15. Select the pair related to the given options in the first pair.

UAE : DIRHAM :: KOREA : _____

- (A) LIRA
(B) KYAT
(C) WON
(D) TAKA

- A. (B)
B. (C)
C. (A)
D. (D)

Ans. B

Sol.

Dirham is the currency of UAE.
Similarly, won is the currency of Korea.
Option B is correct.

16. If COIL = 315912 and POLICE = 161512935 then PRICE = ?

- (A) 1516824
(B) 1517824
(C) 1618935
(D) 1718935

- A. (B)
B. (C)
C. (D)
D. (A)

Ans. B

Sol.

The code is written according to the place value of alphabets in English dictionary.

C = 3, O = 15, I = 9, L = 12

COIL = 315912

Similarly,

P = 16, R = 18, I = 9, C = 3, E = 5

PRICE = 1618935

Hence, option B is correct.

17. P Purchase an item for 1200 and sold it on a profit of 10%. If he sells it at 1380 the calculate his increase in profit percentage.

- (A) 5%
(B) 10%
(C) 12%
(D) 15%

- A. (C)
B. (D)
C. (A)
D. (B)

Ans. C

Sol.

Cost price of article = Rs. 1200

New Selling price = Rs. 1380

New profit percentage = $180/1200 \times 100 = 15\%$

Increase in profit percentage = $15 - 10 = 5\%$

18. Genome of which animal was published in November who can survive for 10 years without food and also known as flesh Pigbets?

- (A) Deathstalker Scorpion
(B) Mountain Goat
(C) Tardigrade
(D) Black Mamba

- A. (A)
B. (D)
C. (B)
D. (C)

Ans. A

Sol.

* **Genome of Deathstalker Scorpion** was published in November who can survive for 10 years without food and known as flesh Pig bets.

* The deathstalker is a species of scorpion, a member of the Buthidae family.

* Its venom is a powerful mixture of neurotoxins, with a low lethal dose.

19. Which of the following planets doesn't have a satellite?

- (A) Jupiter
(B) Mars
(C) Venus
(D) Neptune

- A. (C)
B. (A)

C. (B)
D. (D)
Ans. A
Sol.

* **Of the inner planets, Mercury and Venus have no natural satellites.**

* Earth has one large natural satellite, known as the Moon; and Mars has two tiny natural satellites, Phobos and Deimos.

* There are 79 known *moons of Jupiter*.

20. Who was the first person to travel to the outer space?

- (A) Neil Armstrong
- (B) Yuri Gagarin
- (C) Buzz Aldrin
- (D) John Glenn

A. (D)
B. (B)
C. (C)
D. (A)

Ans. B
Sol.

* **Yuri Gagarin became first person to travel to the outer space on April 12, 1961.**

* Neil Armstrong became first person to reach on the surface of moon.

* Yuri Alexievich Gagarin was a Soviet Air Forces pilot and cosmonaut.

21. A two digit number is four times the sum of its digits. If 27 is added then it becomes seven times the sum of its digits. The two digit number is

- (A) 24
- (B) 12
- (C) 48
- (D) 36

A. (B)
B. (C)
C. (D)
D. (A)

Ans. C
Sol.

Let the two digits number be $(10x + y)$

Given that,

$$10x + y = 4(x + y)$$

$$6x = 3y$$

$$y = 2x$$

According to the question,

$$(10x + y) + 27 = 7(x + y)$$

$$3x + 27 = 6y$$

By putting $y = 2x$

$$x = 3$$

$$y = 6$$

then the number is $(10x + y) = 30 + 6 = 36$

22. In the following fractions which one is true?

(A) $\frac{13}{21} < \frac{57}{97} < \frac{52}{94} < \frac{36}{79}$

(B) $\frac{36}{79} < \frac{57}{97} < \frac{52}{94} < \frac{13}{21}$

(C) $\frac{36}{79} < \frac{52}{94} < \frac{13}{21} < \frac{57}{97}$

(D) $\frac{36}{79} < \frac{52}{94} < \frac{57}{97} < \frac{13}{21}$

A. (D)
B. (B)
C. (A)
D. (C)

Ans. A
Sol.

$$13/21 = 0.61$$

$$52/94 = 0.55$$

$$57/97 = 0.58$$

$$36/79 = 0.45$$

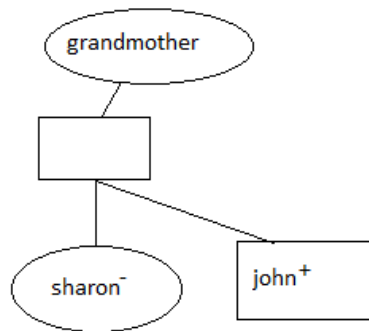
Therefore, $\frac{36}{79} < \frac{52}{94} < \frac{57}{97} < \frac{13}{21}$

23. John said, 'Sharon is the daughter of only son of my Grandmother'. How Sharon is related with John?

- (A) Sister
- (B) Maternal Aunt
- (C) Cousin
- (D) Mother

A. (C)
B. (D)
C. (B)
D. (A)

Ans. D
Sol.



Sharon is sister of John.
Option D is correct.

24. Sri Lanka got independence as Dominion of Ceylon in which year?

- (A) 1948
- (B) 1972
- (C) 1947
- (D) 1968

- A. (C)
- B. (D)
- C. (B)
- D. (A)

Ans. C

Sol.

* **In 1948, the British Colony of Ceylon was granted independence as Ceylon.**

* In 1972, the country became a republic within the Commonwealth, and its name was changed to Sri Lanka.

25. Asoka the Great was associated with which dynasty?

- (A) Maurya Dynasty
- (B) Mughal Dynasty
- (C) Gupta Dynasty
- (D) Chola Dynasty

- A. (D)
- B. (B)
- C. (C)
- D. (A)

Ans. C

Sol.

* **Ashoka the Great was one of the most influential rulers of Mauryan Dynasty.**

* He ruled almost all of the Indian subcontinent from 268 to 232 BCE.

* Ashoka built Lion Capital at Saranath & this has been adopted as the National Emblem of India.

26. Vijay introduced Sharmila as the daughter of only Granddaughter of his maternal Grandmother. How is Vijay related with Sharmila.

- (A) Father
- (B) Cousin
- (C) Grand father
- (D) Maternal Uncle

A. (D)

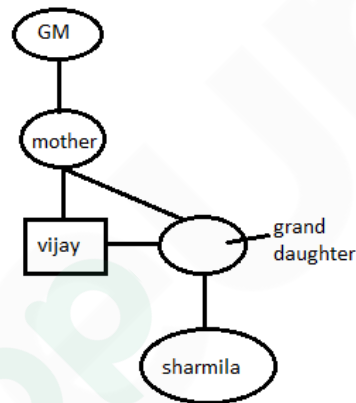
B. (A)

C. (B)

D. (C)

Ans. A

Sol.



From the diagram, it is clear that Vijay is maternal uncle of Sharmila.

Option A is correct.

27. The pillars of 12 m and 17 m long are standing on the ground. If the distance between their feet is 12 m then find the distance between their top.

- (A) 11 m
- (B) 12 m
- (C) 13 m
- (D) 14 m

A. (D)

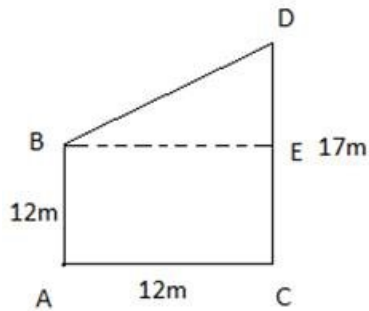
B. (A)

C. (C)

D. (B)

Ans. C

Sol.



$$DE = 17 - 12 = 5 \text{ m}$$

Therefore,

$$BD = \sqrt{BE^2 + DE^2}$$

$$= \sqrt{12^2 + 5^2}$$

$$BD = 13 \text{ m}$$

28. Which of the following Mosques was built by Mughal Emperor Shahjahan.

- (A) Jama Masjid, Delhi
- (B) Badshahi Masjid, Lahore
- (C) Kabuli Bagh Masjid, Haryana
- (D) Quila-e-Kuhna Masjid, Delhi

A. (A)

B. (C)

C. (B)

D. (D)

Ans. A

Sol.

* **Jama Masjid Delhi was constructed by Shahjahan between 1650 and 1656.**

* Shah Jahan's reign is considered as golden period of architecture, Taj Mahal, Shahjahanabad, Red Fort, etc are some architectural marvels of his period.

* The architectural plan of Badshahi Masjid was built by Shah Jahan's son Aurangzeb at Lahore.

29. Select the pair related to the given options in the first pair.

LION : ROAR :: OWL : _____

- (A) HOWL
- (B) GRUNT
- (C) HOOT
- (D) CROAK

A. (B)

B. (D)

C. (C)

D. (A)

Ans. C

Sol.

Roar is the voice produced by lion.

Similarly, hoot is the voice produced by owl.

Option C is correct.

30. In the sport of Badminton which of these is a hard hit overhead shot in which shuttle goes at a very fast pace towards floor in opponents court.

- (A) Smash
- (B) Wood shot
- (C) Hairpin shot
- (D) Drive

A. (D)

B. (B)

C. (A)

D. (C)

Ans. C

Sol.

* **Smash**- a hard hit overhead shot in which shuttle goes at a very fast pace towards floor in opponents court.

* **Wood Shot** - Shot that results when the base of the shuttle is hit by the frame of the racquet.

* **Hairpin net shot** : A shot made from below and very close to the net and causing the shuttle to rise, just clear the net, then drop sharply down the other side so that the flight of the shuttlecock resembles the shape of a hairpin.

31. Most of the Animal species are on the verge of extinction due to

- (A) Loss in Habitat
- (B) Acid Rain
- (C) Poaching
- (D) Scarcity of water

A. (C)

B. (D)

C. (A)

D. (B)

Ans. A

Sol.

* **Poaching is one of the vital reasons behind the extinctions of animal species.**

* Poaching has been defined as illegal hunting or capturing of wild animals.

* Defaunation of forests, Extinction of animal species, negative publicity of Wildlife tourism etc are some adverse effects of poaching.

32. Area of a right angled triangle is 30 cm². If height 7 m more than base then find the length

- (A) 5 m
- (B) 12 m
- (C) 7 m
- (D) 9 m

- A. (B)
- B. (C)
- C. (D)
- D. (A)

Ans. D

Sol.

Let the length of the base be x

Height of the triangle = x+7

Area of triangle = $\frac{1}{2} \times x \times (x + 7) = 30$

$$x^2 + 7x - 60 = 0$$

$$x^2 + 12x - 5x - 60 = 0$$

$$(x+12)(x-5) = 0$$

X = 5 = length of base

33. Which of the following is true?

- (A) Image formed at retina is inverted
- (B) Image formed at retina is twice of original image
- (C) Image formed at retina is similar or Original Image
- (D) Image formed at retina is small

- A. (D)
- B. (A)
- C. (B)
- D. (C)

Ans. B

Sol.

*** The image formed on the retina is inverted.**

*** The image formed on the retina is real.**

* Our brain converts the electrochemical impulses from our eyes to create the visual representation of reality we perceive. Or in other words the inverted image is erected by brain through complex nervous functions.

34. Scientific Name Homo Sapiens Means?

- (A) Simple human
- (B) Tall human
- (C) Intelligent human
- (D) Working human

- A. (C)
- B. (A)

- C. (D)
- D. (B)

Ans. C

Sol.

Scientific name Homo Sapiens means 'wise man' or 'intelligent man'.

* The term Homo Sapiens was introduced in 1758 by Carl Linnaeus.

* The species was initially thought to have emerged from a predecessor within the genus Homo around 300,000 to 200,000 years ago.

35. Which country got Independence in 2011?

- (A) Eritrea
- (B) South Sudan
- (C) Slovakia
- (D) Brunei

- A. (C)
- B. (B)
- C. (A)
- D. (D)

Ans. B

Sol.

*** South Sudan got independence on 9 July 2019 as the outcome of a 2005 agreement that ended Africa's longest-running civil war.**

* **In 2013 in Sudan**, Civil war breaks out after the president, Salva Kiir, sacks the cabinet and accuses Vice-President Riek Machar of planning a failed coup.

* A power-sharing agreement was signed between the warring parties in August 2018 in a bid to bring the five-year civil war to an end.

36. Which country will host the 2019 Rugby world cup?

- (A) New Zealand
- (B) Australia
- (C) England
- (D) Japan

- A. (C)
- B. (A)
- C. (B)
- D. (D)

Ans. D

Sol.

*** The 2019 Rugby world cup will be hosted by Japan from 20 September to 2 November.**

* It will be the ninth Rugby World Cup the ninth Rugby World Cup.
 * This is the first time when Rugby world cup is to be held in Asia.
 * The opening match of the 2019 Rugby World Cup will take place at the Ajinomoto Stadium , Tokyo.

$$37.3.26 \times 7.2 = ?$$

- (A) 20.342
 (B) 23.472
 (C) 22.012
 (D) 21.432

- A. (C)
 B. (B)
 C. (A)
 D. (D)

Ans. B

Sol.

$$3.26 \times 7.2 = 23.472$$

38. Which of the following satellite was launched in February 2015 from space X to monitor exclusive radiation from sun which is likely to effect power grid, Telecom system and satellites stationed near earth.

- (A) DSOLAR
 (B) DISCOVER
 (C) XPLR
 (D) DLAR

- A. (A)
 B. (C)
 C. (D)
 D. (B)

Ans. A

Sol.

* **Deep Space Climate Observatory is a NOAA space weather, space climate, and Earth observation satellite.**

* It is formally known as Tirana.
 * It was launched by SpaceX on a Falcon 9 launch vehicle on February 11, 2015, from Cape Canaveral.
 * Its objective is to monitor exclusive radiation from sun which is likely to effect power grid, Telecom system and satellites stationed near earth.

39. Who was the first scientist to prepare periodic table for chemical elements

- (A) Henry Moseley
 (B) Robert Boyle

- (C) Dmitri Mendeleev
 (D) John Newlands

- A. (D)
 B. (C)
 C. (B)
 D. (A)

Ans. B

Sol.

* **Dmitri Mendeleev was the first scientist to prepare periodic table for chemical elements.**

* Dmitri Mendeleev is often referred to as the Father of the Periodic Table. He called his table or matrix, "the Periodic System".

* Mendeleev's table did not include any of the noble gases, which were discovered later. These were added by Sir William Ramsay as Group 0.

* Mendeleev organized elements in order of increasing atomic mass, in 1914 Henry Moseley gained further efficiency and organised the table by Atomic number rather than Atomic weight.

40. P's height is 5 ft. and his shadow's height is 7 ft long. He measured the shadow of his school's building to be 42 ft. Find the height of the building

- (A) 50 ft
 (B) 36 ft
 (C) 30 ft
 (D) 32 ft

- A. (D)
 B. (A)
 C. (B)
 D. (C)

Ans. D

Sol.

Let θ be the angle of elevation of the sun.

Therefore, $\tan \theta = \frac{\text{height of the man}}{\text{length of man's shadow}} = \frac{\text{height of the building}}{\text{length of its shadow}}$
 Height of the building = $(5/7) \times 42 = 30$ ft.

41. NaCl is chemical formula of _____.

- (A) Ammonia
 (B) Water
 (C) Salt
 (D) Sugar

- A. (D)
 B. (C)

C. (A)
D. (B)
Ans. B
Sol.

* **NaCl is formula of common salt.**

* In 100 g of NaCl contains 39.34 g Na and 60.66 g Cl.

* It is found in Crystalline structure.

* It is colourless, Odourless solid.

* It is face central crystalline in structure.

42. Sum of digits of a 2-digit number is 13. If the digits are interchanged then the new number is 27 less than the original number. Find the new number.

- (A) 85
(B) 76
(C) 67
(D) 58

A. (D)
B. (C)
C. (A)
D. (B)

Ans. A
Sol.

Let the 2 digits number be $10x+y$

Sum of digits = $x+y = 13$ (i)

After inter changing the digits,

New number = $10y+x$

According to the question,

$10x+y - 10y+x = 27$

$9(x-y)=27$

$x - y = 3$ (ii)

solving (i) and (ii)

$x = 8$ and $y = 5$

new number = $10y + x = 58$

43. Simplify $\left(\frac{2}{5} + \frac{2}{9}\right) + \left(\frac{2}{5} + \frac{5}{9}\right)$

(A) $\frac{28}{45}$

(B) $\frac{28}{43}$

(C) $\frac{27}{34}$

(D) $\frac{7}{17}$

A. (B)
B. (C)
C. (D)
D. (A)

Ans. A
Sol.

$$\left(\frac{2}{5} + \frac{2}{9}\right) + \left(\frac{2}{5} + \frac{5}{9}\right)$$

$$= \left(\frac{18+10}{45}\right) + \left(\frac{18+25}{45}\right)$$

$$= \frac{28}{43}$$

44. Select related to related options given in the first pair of words.

BIHAR : PATNA : GUJARAT : _____

- (A) Gandhi Nagar
(B) Jaipur
(C) Ahmedabad
(D) Daman

A. (B)
B. (A)
C. (D)
D. (C)

Ans. B
Sol.

Patna is the capital of Bihar.

Similarly, Gandhi Nagar is the capital of Gujarat.

Option B is correct.

45. Who ordered the Jallianwallah Bagh Massacre?

- (A) Colonel Reginald Dyer
(B) Michael O' Dwyer
(C) H. H. Asquith
(D) Winston Churchill

A. (B)
B. (A)
C. (C)
D. (D)

Ans. B
Sol.

* The Jallianwallah Bagh Massacre was **ordered by Colonel Reginald Dyer.**

* The Jallianwala Bagh massacre took place on 13 April 1919, killing over 400 people and injuring over 1000 people.

* People gathered for peaceful protest against the arrest and deportation of two national leaders, Satyapal and Saifuddin Kitchlew.

46. Ramkheliya is the Folk Dance of which state?

- (A) Haryana
- (B) Kerala
- (C) Bihar
- (D) Madhya Pradesh

- A. (B)
- B. (C)
- C. (A)
- D. (D)

Ans. C

Sol.

* **Ramkheliya is the folk dance of Bihar.**

* A *folk dance* is developed by people that reflect the life of the people of a certain country or region.

* Jhijhian dance, Jat Jatin dance, Kajari dance, Sohar khilouna dance etc are some of the other folk dances of Bihar.

47. A boat travels against the current from city X to city Y and with the current from city Y to city X. If the speed of boat in still water is 40 km/hr and speed of current is 10 km/hr then find the average speed of the boat for the entire journey.

- (A) 36.5 km/hr
- (B) 34.5 km/hr
- (C) 37.5 km/hr
- (D) 33.33 km/hr

- A. (C)
- B. (A)
- C. (B)
- D. (D)

Ans. A

Sol.

When the distance travelled is same with two different speeds, the average speed is

$$= \frac{2ab}{a+b}$$

Where a and b are the two different speeds

$$\text{Speed of boat in downstream} = 40 + 10 = 50 \text{ km/hr}$$

$$\text{Speed of boat in upstream} = 40 - 10 = 30 \text{ km/hr}$$

$$\text{So average speed of boat} = \frac{(2 \times 50 \times 30)}{(50 + 30)} = 37.5 \text{ km/hr}$$

48. Find the symbols which completes the equation from the given options.

$$84 \div 12 \times 5 + 6 = 41$$

- (A) $\times, -, \div$
- (B) $+, \div, -$
- (C) $+, -, \div$
- (D) $\div, \times, +$

A. (D)

B. (B)

C. (C)

D. (A)

Ans. A

Sol.

$$84 \div 12 \times 5 + 6 \text{ (Applying BODMAS)}$$

$$\Rightarrow 7 \times 5 + 6$$

$$\Rightarrow 35 + 6$$

$$\Rightarrow 41$$

Hence, the correct response is option A.

49. Which of the following German Scientist invented X-ray.

- (A) Wilhelm Roentgen
- (B) Philipp Lenard
- (C) Marie Curie
- (D) William Crookes

A. (A)

B. (C)

C. (D)

D. (B)

Ans. A

Sol.

* **Wilhelm Conrad Röntgen** was a German mechanical engineer and physicist and he was born in 1845.

* He **invented X Rays** in 1895.

* He was awarded Nobel Prize for this in 1901.

* In his honour, IUPAC named element no. 111 as roentgenium.

50. Some statements and conclusions are given below. Consider the statement as true however it might not match with the general facts and decide which conclusion follows the statement.

Statement: June – September are months of Rainy season in India.

Conclusion:

I. India always rains in these 4 months.

II. Rain occurs only in Rainy season in India.

(A) Only conclusion I follows

(B) Only conclusion II follows

(C) Both conclusion I and II follows

(D) Neither I nor II follows

- A. (C)
- B. (B)
- C. (D)
- D. (A)

Ans. C
Sol.

India falls under the region of Monsoon climate and the rain is expected to occur from June to September. But it is a possibility that it might rain in some other month.

Hence, none of the conclusion will follow.

51. Rearrange the jumbled sentence to form a meaningful sentence:

P: all people through its impact on
Q: the growth in human population
R: the economy and environment
S: around the world has affected

- (A) SRQP
- (B) QSPR
- (C) PQRS
- (D) QRPS

- A. (C)
- B. (B)
- C. (A)
- D. (D)

Ans. B
Sol.

The meaningful sentence is -

Q: the growth in human population
S: around the world has affected
P: all people through its impact on
R: the economy and environment.
Hence, option B is correct.

52. This Yemeni Journalist and Politician has been awarded with Nobel Peace prize in 2011 for his work towards Human Right. She is:

- (A) Leymah Gbowee
- (B) Tawakkol Karman
- (C) Ellen Sirleaf
- (D) Shirin Ebadi

- A. (A)
- B. (C)
- C. (B)
- D. (D)

Ans. C
Sol.

* **Tawakkol Abdel-Salam Karman** is a Yemeni journalist, politician, and human rights activist.

* She was born in 1979.

* She is a co-recipient of the 2011 Nobel Peace Prize, she became the first Yemeni, and the second Muslim woman to win a Nobel Prize.

* She became the international public face of the 2011 Yemeni uprising.

53. In Olympics, women's have participated in all the events in year

- (A) 1900
- (B) 2012
- (C) 2014
- (D) 1960

- A. (D)
- B. (C)
- C. (B)
- D. (A)

Ans. C
Sol.

* **In 2012, women's boxing was introduced**, resulting in no remaining sports that do not include events for women.

* And in same year women's have participated in all the events in year.

* In 1900 women for the first time, women participated in the Games in Paris.

54. Which of the following isn't a source of water pollution

- (A) Ocean Dumping
- (B) Domestic Waste
- (C) Fishing in Sea
- (D) Oil Spill

- A. (C)
- B. (B)
- C. (A)
- D. (D)

Ans. B
Sol.

There are many causes for water pollution but two general categories exist: direct and indirect contaminant sources.

* Ocean Dumping, Domestic Waste and Oil Spill categorised under **direct contaminant sources**.

* **Indirect sources** include contaminants that enter the water supply from soils/groundwater systems and from the atmosphere via rain water.

Fishing in sea is not contamination of water.

55. Some statement and conclusions are given below. Consider these statements are true however they might not match with the general facts and decide which conclusion follows the statement.

Statement

I. All Pens are Books.

II. All Books are Tables.

Conclusions

(A) All Tables are Pens.

(B) Some Tables are Pens.

(C) All Books are pens.

(D) No Table is Book.

A. (D)

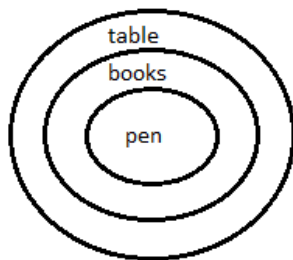
B. (C)

C. (A)

D. (B)

Ans. D

Sol.



Conclusions

(A) All Tables are Pens. – (false) as it is not possible.

(B) Some Tables are Pens. – (true) as all pens are table. Therefore, some tables are pen.

(C) All Books are pen. – (false) not possible

(D) No Table is Book. – (false) not possible.

Option D is correct.

56. Speed of modern day printers are measured in

(A) Character per minute

(B) Line per minute

(C) Page per minute

(D) Words per minute

A. (B)

B. (D)

C. (A)

D. (C)

Ans. D

Sol.

* Speed of modern printer is measured **in ppm or page per minute.**

* In early printers it was measured in cpm or characters per minute or lpm-line per minutes for line printers.

* These measures are used primarily as a marketing tool, and are not as well standardised as toner yields.

57. Find the odd one out

(A) Sirius

(B) Mars

(C) Neptune

(D) Saturn

A. (D)

B. (A)

C. (C)

D. (B)

Ans. B

Sol.

Except Sirius, all the three are planet of solar system.

Option B is correct.

58. Find the mode of 72, 74, 75, 76, 75, 74, 73, 75, 73, 71 and 77.

(A) 73

(B) 74

(C) 75

(D) 72

A. (C)

B. (A)

C. (D)

D. (B)

Ans. A

Sol.

The mode of a set of data values is the value that appears most often.

Arranging the data in ascending order, 71, 72, 73, 73, 74, 74, 75, 75, 75, 76, 77

We can clearly see that 75 appears most often. Therefore mode of the data = 75

59. If '+' means '×', '-' means '÷', '×' means '+' and '÷' means '-' then find the value of $35 - 5 + 6 \times 7$

(A) 45

(B) 49

(C) 55

(D) 51

A. (C)

B. (B)

C. (A)

D. (D)
Ans. B
Sol.

symbol	\div	$-$	\times	$+$
meaning	$+$	\div	$+$	\times

$$35 - 5 + 6 \times 7$$

After changing the symbols,

$$35 \div 5 \times 6 + 7 \text{ (applying BODMAS)}$$

$$\Rightarrow 7 \times 6 + 7$$

$$\Rightarrow 42 + 7$$

$$\Rightarrow 49$$

Option B is correct.

60. Find the average of first 20 multiples of 8

(A) 78

(B) 80

(C) 84

(D) 82

A. (B)

B. (C)

C. (D)

D. (A)

Ans. B

Sol.

First 20 multiple of 8 are 8, 16,.....160

We can say that it is an Arithmetic progression with first term 8 and last term = 160

$$\text{Average of an AP} = (\text{first term} + \text{last term})/2 = (8 + 160)/2 = 84$$

61. Solve $0.00081 \div 0.09$

(A) 0.09

(B) 0.009

(C) 0.9

(D) 0.0009

A. (A)

B. (B)

C. (D)

D. (C)

Ans. B

Sol.

$$0.00081 \div 0.09 = (81/100000) \times (100/9) = 0.009$$

62. Which is NASA'S first spacecraft to fly on July 14, 2015 whose motive is to collect data and Information regarding Planet pluto is

(A) New Planets

(B) New Horizons

(C) Casini Solistice

(D) Europa

A. (C)

B. (D)

C. (A)

D. (B)

Ans. C

Sol.

* **NASA'S first spacecraft to fly on July 14, 2015** whose motive is to

collect data and Information regarding Planet pluto is new horizons.

* On July 14, New Horizons performed the first-ever flyby of the faraway dwarf planet.

* New Horizons continued beaming flyby data home for months after the the flyby, then went into a hibernation mode to conserve resources for the Jan. 1, 2019 flyby of the Kuiper Belt Object Ultima Thule.

63. What is called scientific analysis and study of other very between organism and the environment?

(A) Ecology

(B) Microbiology

(C) Entomology

(D) Ornithology

A. (C)

B. (A)

C. (D)

D. (B)

Ans. A

Sol.

* **Ecology**-the branch of biology that deals with the relations of organisms to one another and to their physical surroundings.

* **Microbiology**-*Microbiology* is the study of microorganisms, those being unicellular (single cell), multicellular, or acellular.

* **Entomology**- Study of Insects.

* **Ornithology**- Study of birds.

64. Which of the following cell found in human body doesn't have mitochondria?

(A) Red Blood Cells

(B) Liver Cells

(C) Muscle Cells

(D) White Blood Cells

- A. (B)
B. (A)
C. (C)
D. (D)

Ans. B

Sol.

* **Mitochondrion** are membrane-bound organelle found in the cytoplasm of almost all eukaryotic cells.

* **Mitochondrion primarily produces** adenosine triphosphate (ATP), source of body energy. That's why it is known as powerhouse of body.

* **Mitochondrion are absent in Red Blood cells** whereas liver cells and muscle cells may contain hundreds or even thousands.

65. A Man is 26 years older than his son. After 3 years, his age will be 3 times of his son. Find the present age of father.

- (A) 10 year
(B) 36 year
(C) 32 year
(D) 40 year

- A. (C)
B. (A)
C. (B)
D. (D)

Ans. C

Sol.

Let the age of man and son is x & y respectively

$$x - y = 26 \dots\dots(i)$$

$$\text{and } x + 3 = 3(y + 3)$$

$$x + 3 = 3y + 9$$

$$x = 3y + 6 \dots\dots(ii)$$

from equation (i) and (ii)

$$2y = 20$$

$$Y = 10$$

$$x = 36 \text{ years}$$

66. Find the symbols which completes the equation from the given options.

$$25 \times 5 \div 17 - 9 = 133$$

- (A) $\times, -, \div$
(B) $+, \div, -$
(C) $+, -, \div$
(D) $\times, +, -$

- A. (C)
B. (D)
C. (A)
D. (B)

Ans. B

Sol.

$$25 \times 5 + 17 - 9 \text{ (applying BODMAS)}$$

$$\Rightarrow 125 + 17 - 9$$

$$\Rightarrow 142 - 9$$

$$\Rightarrow 133$$

Option B is correct.

67. Which of the following is NOT an early computer

- (A) Atlas
(B) Leo
(C) ENIAC
(D) LINC

- A. (B)
B. (A)
C. (C)
D. (D)

Ans. C

Sol.

* **ENIAC was the world's first general-purpose electronic, digital computer** and is probably the most famous of the ones included in this article. It was announced in 1946.

* The LEO I (Lyons electronic office I) was the first computer used for commercial business applications in 1951.

* The Atlas Computer was one of the world's first supercomputers, in use from 1962 until 1971.

* The LINC (Laboratory INstrument Computer) is considered as the first minicomputer and a forerunner to the personal computer.

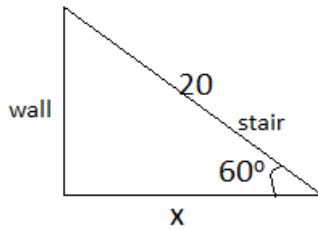
68. A 20m long stair is standing against a wall making an angle of 60° from the ground. Find the distance between the foot of the stair and wall.

- (A) 10 m
(B) 17.32 m
(C) 34.64 m
(D) 30 m

- A. (B)
B. (D)
C. (C)
D. (A)

Ans. D

Sol.



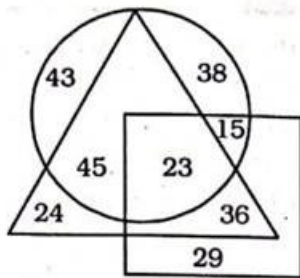
Let the distance between foot of stair and wall is x
 $\cos 60^\circ = x/20$
 $\frac{1}{2} = x/20$
 $x = 10 \text{ m}$

69. Instruction: Study the following figure and answer the questions based on it.

represents who drinks Tea

represents who drinks Coffee

represents who drinks Juice



How many persons drinks Juice and Tea but not coffee

- (A) 23
 (B) 36
 (C) 15
 (D) 24

- A. (B)
 B. (D)
 C. (A)
 D. (C)

Ans. A
 Sol.

The required part should be common in both triangle and square.
 Total persons = 36.
 Hence, option A is correct.

70. How many persons drinks Tea and Coffee but not Juice.

- (A) 38
 (B) 43
 (C) 23
 (D) 45

- A. (C)
 B. (A)
 C. (B)
 D. (D)

Ans. D

Sol.

The required part should be common in both triangle and circle.

Total number of persons = 45.

Option D is correct.

71. How many persons drinks coffee?

- (A) 141
 (B) 164
 (C) 127
 (D) 145

- A. (D)
 B. (C)
 C. (B)
 D. (A)

Ans. C

Sol.

The required number of persons comes in the circle part.

Total persons = $43 + 45 + 23 + 15 + 38 = 164$.

Option C is correct response.

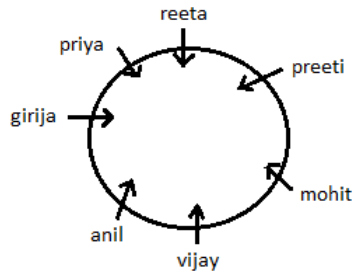
72. Instruction: Answer the questions based on the Information provided in Paragraph.

Priya, Mohit, Girija, Preeti, Vijay, Anil and Reeta are sitting around a circular table facing the centre. Reeta, who is unmarried is sitting to the 2nd to the left of her best friend Girija, who is sitting to the left of her husband. Priya is sitting to the 3rd to the left of her husband Vijay. Mohit is sitting in between his wife Preeti and Vijay.

In which of the following option first person is not sitting to the adjacent right of 2nd person?

- (A) Mohit, Vijay
 (B) Anil, Girija
 (C) Reeta Vijay
 (D) Priya, Reeta

- A. (C)
B. (B)
C. (A)
D. (D)
Ans. A
Sol.

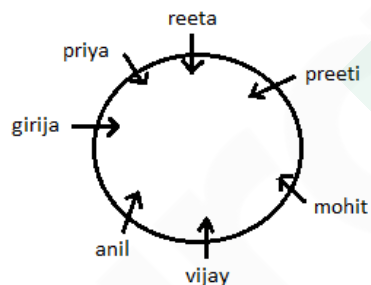


Reeta is not sitting to the adjacent right of 2nd person.
Hence, the correct response is option A.

73. Anil is sitting at which at these positions?

- (A) 4th to the right of Preeti
(B) Adjacent Left of Girija
(C) Between Reeta and Mohit
(D) Adjacent Right of Priya

- A. (C)
B. (D)
C. (A)
D. (B)
Ans. C
Sol.

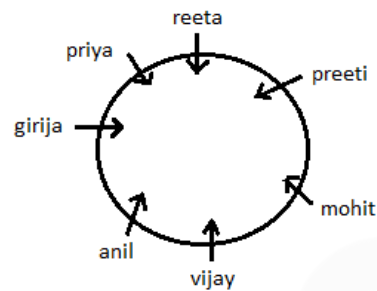


According to the above figure, anil is sitting 4th to the right of preeti.
Option C is correct.

74. Which of the following is True

- (A) Girija is sitting 3rd to the left of Vijay
(B) Priya is sitting to the adjacent Right of Reeta
(C) Preeti is sitting 2nd to the right of Priya
(D) Reeta is sitting 3rd to the left of Mohit.
A. (C)
B. (B)

- C. (D)
D. (A)
Ans. B
Sol.



From the diagram, it is clear that only the 2 fact is true. I.e. Priya is sitting to the adjacent Right of Reeta.
Hence, option B is correct.

75. If ' \div ' means ' \times ', ' $-$ ' means ' \div ', ' \times ' means ' $+$ ' and ' $+$ ' means ' $-$ ' then find the value of

$$15 \div 7 \times 12 + 7$$

- (A) 110
(B) 107
(C) 104
(D) 100

- A. (A)
B. (B)
C. (C)
D. (D)
Ans. A
Sol.

symbol	\div	$-$	\times	$+$
meaning	\times	\div	$+$	$-$

$$15 \div 7 \times 12 + 7$$

After changing the symbols,

$$15 \times 7 + 12 - 7 \text{ (applying BODMAS)}$$

$$\Rightarrow 105 + 12 - 7$$

$$\Rightarrow 117 - 7$$

$$\Rightarrow 110$$

Hence, option A is correct.

76. Find the median of 25, 23, 26, 29, 31, 39 and 11.

- (A) 25
(B) 26
(C) 29
(D) 31
A. (D)
B. (C)
C. (A)

D. (B)

Ans. D

Sol.

By arranging the data set in ascending order

11,23,25,26,29,31,39

Median will be the $(n+1)/2$ th term of the given dataset.

So median = $(7+1)/2$ th term = 4th term = 26

77.A and B completes a work together in 40 days, their efficiency is in the ratio of 8:5. A alone can complete the work in how many days.

(A) 65 days

(B) 40 days

(C) 72 days

(D) 104 days

A. (D)

B. (B)

C. (C)

D. (A)

Ans. D

Sol.

Let the efficiency of A and B be $8x$ and $5x$ respectively.

Total work = Efficiency of A and B

together \times Time taken = $40 \times 13x = 520x$

Time taken by A to complete the whole work = $520x/8x = 65$ days.

78.A shopkeeper Marks the price of Rs 160 on item. After giving 10% discount he earns a profit of 20% then find the cost price of the item.

(A) Rs 140

(B) Rs 120

(C) Rs 150

(D) Rs 132

A. (C)

B. (B)

C. (A)

D. (D)

Ans. B

Sol.

Marked price = Rs. 160

Selling price after giving 10% discount =

$160 \times 90/100 = \text{Rs. } 144$

Since, Profit = 20%

$CP = 100/120 \times SP = 5/6 \times 144 = \text{Rs.}$

120

79.Emergency provision in Indian constitution is taken from the constitution of which country.

(A) USA

(B) UK

(C) Germany

(D) Canada

A. (B)

B. (D)

C. (C)

D. (A)

Ans. C

Sol.

* **Emergency provision in Indian constitution is taken from the constitution of Germany.**

* They are mentioned under Article 352, A 356 and A 360.

* Fundamental Rights, Judicial Review etc are taken from USA.

* Bicameral House, Structure of law etc are taken from UK.

* And Centrifugal form of federalism Structure is taken from Canada.

80.Which of these is not a type of stem cell?

(A) Umbilical

(B) Fetal

(C) Embryonic

(D) Fat

A. (C)

B. (A)

C. (D)

D. (B)

Ans. C

Sol.

Stem cells are undifferentiated cells that can turn into specific cells, as the body needs them.

* **Umbilical, Fetal and Embryonic stem cell are types of stem cells.**

* The full classification of stem cell divides it into 5 categories- Totipotent, Pluripotent, Multipotent, Oligopotent and Unipotent.

81.P travels with the speed of 50 km/hr in the 1st hour and with 70 km/hr in the next 2 hours. Find his average speed

(A) 60 km/hr

(B) 63.33 km/hr

(C) 59.33 km/hr

(D) 62 km/hr

- A. (D)
- B. (B)
- C. (C)
- D. (A)

Ans. B

Sol.

Total distance travelled = $50 \times 1 + 70 \times 2 = 190 \text{ km}$

Total time taken = 3 hours

Average speed = Total distance travelled / Total time taken = $190/3 = 63.33 \text{ km/hr}$

82. 'Project Tiger' India's highly popular wildlife conservation project for the conservation of decreasing number of Indian Tiger was started in the year.

- (A) 1975
- (B) 1973
- (C) 1978
- (D) 1982

- A. (A)
- B. (B)
- C. (D)
- D. (C)

Ans. D

Sol.

'Project Tiger' is India's highly popular wildlife conservation project for the conservation of decreasing number of Indian Tiger was started in 1973.

* During the tiger census of 2006, a new methodology using camera trap and GPS was used extrapolating site-specific densities of tigers.

* Project Tiger was administered by the National Tiger Conservation Authority.

83. Statements and conclusions are given below. Consider these statements as true however they might not match with the general facts and decide which conclusion follows the statement.

Statement

High Risk provides High Benefit

Conclusion

- I. No Risk, No Profit
- II. Every Individual needs to take risk in life
- (A) Only conclusion I follows
- (B) Only conclusion II follows
- (C) Both conclusion I and II follows
- (D) Neither I nor II follows

- A. (D)
- B. (B)
- C. (C)
- D. (A)

Ans. A

Sol.

The statement says high risk provide high benefits. But this not prove the first statement. Also, it is not necessary to take risk in life to get benefits.

Hence, none of the conclusion follows.

84. Some statements and conclusions are given below. You have to consider these statements as true however they might not match with the general facts and decide which conclusion follows the statement.

Statement:

I. Some Boys are Girls

II. All Girls are singer.

Conclusion:

I. Some singers are Girls.

II. Some singers are Boys.

(A) Only conclusion I follows

(B) Only conclusion II follows

(C) Both conclusion I and II follows

(D) Neither conclusion I nor II follows

A. (C)

B. (B)

C. (D)

D. (A)

Ans. A

Sol.



Conclusion:

I. Some singers are Girls. – (true) as all girls are singer. So it is a fact that some singers are girls.

II. Some singers are Boys. – (true) it is clear from the diagram.

Hence, both conclusions follow.

85. Radium is extracted from which mineral

- (A) Rutile
- (B) Haematite
- (C) Limestone
- (D) Pitchblende

- A. (D)
B. (C)
C. (B)
D. (A)

Ans. A

Sol.

* **Pitchblend is also known as**

Uraninite, it is a radioactive, uranium-rich mineral and ore with a chemical composition that is largely UO_2 .

* All uraninite minerals contain a small amount of radium as a radioactive decay product of uranium.

* Marie Curie used pitchblende as the source material for her isolation of radium in 1898.

86. Cost Price of 90 tables are equal to the selling price of 60 tables. Find the profit percentage.

- (A) 33.33%
(B) 40%
(C) 50%
(D) 60%

- A. (D)
B. (C)
C. (B)
D. (A)

Ans. B

Sol.

$$90 \times CP = 60 \times SP$$

$$SP/CP = 3/2$$

$$\text{Profit \%} = (3-2)/2 \times 100 = 50\%$$

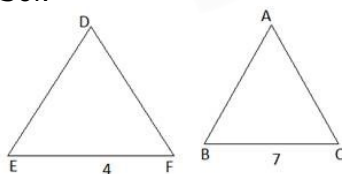
87. If $\triangle ABC$ and $\triangle DEF$ are similar triangles and $BC = 4$ cm, $EF = 7$ cm, area of $\triangle ABC$ is 144 cm^2 then find the area of $\triangle DEF$

- (A) 252 cm^2
(B) 504 cm^2
(C) 441 cm^2
(D) 324 cm^2

- A. (B)
B. (D)
C. (C)
D. (A)

Ans. D

Sol.



In Similar triangle,

$$\frac{\text{ar}(\triangle ABC)}{\text{ar}(\triangle DEF)} = \left(\frac{BC}{EF}\right)^2$$

$$\frac{144}{\text{ar}(\triangle DEF)} = \left(\frac{4}{7}\right)^2$$

$$\text{Ar}(\triangle DEF) = 441 \text{ cm}^2$$

88. If X 393 is divisible by 11 then find the smallest natural number to be replaced by X.

- (A) 5
(B) 6
(C) 7
(D) 8

- A. (B)
B. (C)
C. (D)
D. (A)

Ans. C

Sol.

For X393 to be divisible by 11, the difference between the sum of its odd and even digits must be 0 or divisible by 11.

$$X + 9 - (3+3) = X + 3$$

$$\text{Minimum value of } X + 3 = 11$$

$$X = 8$$

89. Which of the following was India's first satellite specially launched for Defence purpose in 2013.

- (A) GSAT-7
(B) GSAT-6
(C) INSAT-4B
(D) KALPANA-1

- A. (D)
B. (C)
C. (A)
D. (B)

Ans. B

Sol.

INSAT-4B was India's first satellite specially launched for Defence purpose in 2013.

* INSAT-4B is an Indian communications satellite which is dedicated to develop the Indian National Satellite System.

* It was launched in 2007 and stationed in geostationary orbit.

90. Find the LCM of 13, 19, 21 and 22.

- (A) 114114
- (B) 124124
- (C) 141114
- (D) 142214

- A. (C)
- B. (D)
- C. (B)
- D. (A)

Ans. D

Sol.

Since all the numbers are coprime to each other,

There LCM will be = $13 \times 19 \times 21 \times 22 = 114114$

91. If three numbers are in the ratio of 4 : 5 : 7 and their total is 320, then find the total of the smallest and the largest number.

- (A) 140
- (B) 220
- (C) 240
- (D) 180

- A. (A)
- B. (B)
- C. (D)
- D. (C)

Ans. B

Sol.

Let the three numbers be $4x$, $5x$ and $7x$
Sum of three numbers = $4x + 5x + 7x = 16x = 320$

Therefore, $x = 20$

the total of the smallest and the largest number = $4x + 7x = 11x = 220$

92. If resistance of a circuit is doubled then to maintain the same voltage, flow of current in the circuit will

- (A) Increase by Half
- (B) Decrease by Half
- (C) Remain constant
- (D) Becomes zero

- A. (B)
- B. (C)
- C. (D)
- D. (A)

Ans. A

Sol.

* **Ohm's law states** that the current through a conductor between two points is directly proportional to the voltage across the two points.

* It is stated as $V = IR$, hence if resistance is doubled at same voltage, the current became half as per ohm's law.

93. Instruction: Study the following table and answer the question based on it quarterly sales data is given in the table

Financial year	Quarter	Sales (in lakhs)
FY 12-13	Q1	25
FY 12-13	Q2	34
FY 12-13	Q3	24
FY 12-13	Q4	29
FY 13-14	Q1	36
FY 13-14	Q2	32
FY 13-14	Q3	39
FY 13-14	Q4	33
FY 14-15	Q1	45
FY 14-15	Q2	48
FY 14-15	Q3	44
FY 14-15	Q4	41

Total sales for the financial year (14-15)

- (A) Rs 168 Lakh
- (B) Rs 178 Lakh
- (C) Rs 188 Lakh
- (D) Rs 158 Lakh

- A. (A)
- B. (D)
- C. (B)
- D. (C)

Ans. C

Sol.

Total sales in the Financial year, FY 14-15 (in lakhs) = Sales in (Q1 + Q2 + Q3 + Q4) = $45 + 48 + 44 + 41 = 178$ lakh

94. Average sales per quarter in FY (13-14) for the company is

- (A) Rs 31 Lakh
- (B) Rs 32 Lakh
- (C) Rs 34 Lakh
- (D) Rs 35 Lakh

- A. (C)
- B. (B)

C. (A)
D. (D)
Ans. D
Sol.

Average sales per quarter in the Financial year, FY 13-14 = $(36 + 32 + 39 + 33)/4 = 140/4 = 35$ lakh per quarter

95. Increase in sales (in percent) of company from FY-(12-13) to FY-(13-14)

- (A) 20%
(B) 22.5%
(C) 25%
(D) 27.5%

A. (C)
B. (A)
C. (B)
D. (D)
Ans. D

Sol.

Total sales in the Financial year, FY 12-13(in lakh) = Sales in(Q1 +Q2 + Q3 + Q4)= $25 + 34 + 24 + 29 = 112$

Total sales in the Financial year, FY 13-14(in lakh) = Sales in(Q1 +Q2 + Q3 + Q4)= $36 + 32 + 39 + 33 = 140$

Percentage Increase in sales = $(140 - 112) \times 100/112 = 25\%$

96.P is twice as efficient as Q. Together complete a work in 22 days, Q alone can complete the work in how many days?

- (A) 33 days
(B) 22 days
(C) 66 days
(D) 99 days

A. (C)
B. (D)
C. (B)
D. (A)

Ans. A

Sol.

Let the efficiency of Q be 1 unit/day
Then the efficiency of P will be = 2 units/day

Total work = $(2+1) \times 22 = 66$ unit

Time taken by Q to complete the work =

Total work/ efficiency of Q = $66/1 = 66$ days

97.Difference between two numbers is 50 and their ratio is 7:2. Find the product of both numbers.

- (A) 1600
(B) 1200
(C) 1400
(D) 1800

A. (C)
B. (D)
C. (A)
D. (B)

Ans. A

Sol.

Let the two numbers be $7x$ and $2x$.

Difference = $7x - 2x = 50$

$x = 10$

Therefore two numbers are $7x = 70$ and

$2x = 20$

Product of two numbers = $70 \times 20 =$

1400

98.What is the minimum age requirement for the appointment of the Prime Minister of India

(A) 25 years, if he / she is a member of Rajya Sabha

(B) 25 years, if he / she is a member of Lok Sabha

(C) 30 years, if he / she is a member of Rajya Sabha

(D) 30 years, if he / she is a member of Lok Sabha

A. (C)
B. (D)
C. (A)
D. (B)

Ans. A

Sol.

Qualification of Prime Minister of India includes:-

* be a citizen of India.

* be a member of the Lok Sabha or the Rajya Sabha.

* be above 25 years of age if they are a member of the Lok Sabha, or, above 30 years of age if they are a member of the Rajya Sabha.

* not hold any office of profit under the government of India.

99.HCF and LCM of two numbers is 7 and 252 respectively. If Ist number is 28 then find the 2nd number.

- (A) 252
(B) 63
(C) 126
(D) 56

- A. (C)
- B. (B)
- C. (D)
- D. (A)

Ans. B

Sol.

Let the second number be x.

We know that,

$LCM \times HCF = \text{Product of two numbers}$

$$7 \times 252 = 28x$$

$$x = 7 \times 252 / 28 = 63$$

100. Prior to independence, which of the following isn't a French Colony

- (A) Pondicherry
- (B) Patna
- (C) Surat
- (D) Goa

- A. (D)
- B. (B)
- C. (C)
- D. (A)

Ans. B

Sol.

* **Pondicherry, Goa and Surat were French colonies prior to independence while Patna never came under French control.**

* French colony basically comprising geographically separate enclaves on the Indian subcontinent.

* The French establishments included Pondicherry, Karikal and Yanaon on the Coromandel Coast, Mahé on the Malabar Coast and Chandernagor in Bengal.



Latest Sarkari jobs, Govt Exam alerts, Results and Vacancies

- ▶ Latest News and Notification
- ▶ Exam Paper Analysis
- ▶ Topic-wise weightage
- ▶ Previous Year Papers with Answer Key
- ▶ Preparation Strategy & Subject-wise Books

To know more [Click Here](#)



www.prepp.in