



Practice, Learn and Achieve
Your Goal with Prepp

RPF SI Exam

Previous Paper

Simplifying
Government Exams



SSC CHSL



IAS EXAM



RRB NTPC



NTSE



CDS



SSC CGL



CBSE UGC NET



IBPS PO



NDA



SBI PO



IBPS CLERK



AFCAT



SSC JE



CTET



CSIR UGC NET



CAPF



IBPS RRB

www.prepp.in

Roll No:

Registration No:

Name:

Date: 13-Jan-2019 **-3rd Shift**

Examination: **Online Examination - SI**

Section 1 - Online Examination

Question No.1

1.00

Bookmark ☐

Where is the Irvikulam National Park located?

- (A) ☐ Andhra Pradesh - (Alternative 1)
(B) ☐ Tamil Nadu - (Alternative 3)
(C) ☐ **Kerala - (Alternative 4)**
(D) ☐ Karnataka - (Alternative 2)

Question No.2

1.00

Bookmark ☐

Where was Vikramshila University located?

- (A) ☐ Delhi - (Alternative 2)
(B) ☐ Gujarat - (Alternative 1)
(C) ☐ **Bihar - (Alternative 3)**
(D) ☐ Maharashtra - (Alternative 4)

Question No.3

1.00

Bookmark ☐

Who has the power to give forgiveness to the person who has been awarded capital punishment?

- (A) ☐ Chief Justice of India - (Alternative 3)
(B) ☐ **President of India - (Alternative 2)**
(C) ☐ Exclusive Committee of the Supreme Court - (Alternative 4)
(D) ☐ Prime Minister of India - (Alternative 1)

Question No.4

1.00

Bookmark ☐

Gaurav Bidhuri is related to which sport?

- (A) ☐ **Boxing - (Alternative 1)**
(B) ☐ Football - (Alternative 2)
(C) ☐ Tennis - (Alternative 4)
(D) ☐ Cricket - (Alternative 3)

Question No.5

1.00

Bookmark ☐

What is the full form of 'TIR' in light?

- (A) ☐ Total Internal Reduction - (Optional 4)
(B) ☐ Total Intellectual Reflection - (Optional 3)
(C) ☐ **Total Internal Reflection - (Alternative 1)**

(D) ☐ Total Internal Radiation - (Alternative 2)

Question No.6

1.00

Bookmark ☐

Which is the capital of Gujarat?

- (A) ☐ Raipur - (Alternative 2)
(B) ☐ **Gandhinagar - (Alternative 1)**
(C) ☐ Shimla - (Alternative 3)
(D) ☐ Ranchi - (Alternative 4)

Question No.7

1.00

Bookmark ☐

Who had presided over a group of ministers constituted for the Constituent Assembly?

- (A) ☐ **Jawaharlal Nehru - (Alternative 4)**
(B) ☐ Sardar Vallabh Bhai Patel - (Alternative 3)
(C) ☐ Bhimrao Ambedkar - (Alternative 2)
(D) ☐ Of M. Munshi - (Alternative 1)

Question No.8

1.00

Bookmark ☐

Which of the following grain (grain) crops is not there?

- (A) ☐ Millet - (Alternative 3)
(B) ☐ Wheat - (Alternative 1)
(C) ☐ Mecca - (Alternative 2)
(D) ☐ **Sesame - (Optional 4)**

Question No.9

1.00

Bookmark ☐

The capital of Cuba is-

- (A) ☐ Cairo - (Alternative 2)
(B) ☐ **Havana - (Alternative 4)**
(C) ☐ Brazilian - (Alternative 3)
(D) ☐ Kyoto - (Alternative 1)

Question No.10

1.00

Bookmark ☐

In which of these cities is the Iron Maiden of Mehrauli located?

- (A) ☐ Aihole - (Alternative 3)
(B) ☐ Allahabad - (Alternative 1)
(C) ☐ **Delhi - (Alternative 2)**
(D) ☐ Kalinga - (Alternative 4)

Question No.11

1.00

Bookmark ☐

What is the chemical formula of phenol?

- (A) ☐ **C₆H₅OH - (Alternative 2)**

- (B) ☐ C_2H_5OH - (Optional 1)
- (C) ☐ C_4H_6OH - (Alternative 4)
- (D) ☐ C_4H_5OH - (Alternative 3)

Question No.12

1.00

Bookmark ☐

According to the 2011 census, which is the highest population of Indian state?

- (A) ☐ Rajasthan - (Alternative 1)
- (B) ☐ **Uttar Pradesh - (Alternative 2)**
- (C) ☐ Kerala - (Alternative 3)
- (D) ☐ Tamil Nadu - (Alternative 4)

Question No.13

1.00

Bookmark ☐

The supply of crops to be done at regular intervals is called water supply-

- (A) ☐ **Irrigation - (Alternative 3)**
- (B) ☐ Planting - (Alternative 4)
- (C) ☐ Fertilizer - (Alternative 1)
- (D) ☐ Sowing - (Alternative 2)

Question No.14

1.00

Bookmark ☐

Foreign currency convertible bonds issued by Indian companies in foreign currency are _____ written documents which can not or may not be the option of coupon and basic payment.

- (A) ☐ Semi-Deposit - (Optional 4)
- (B) ☐ Current Deposit - (Optional 2)
- (C) ☐ **Semi-loan - (Optional 3)**
- (D) ☐ Future Loan - (Optional 1)

Question No.15

1.00

Bookmark ☐

What is the world's largest country in terms of population?

- (A) ☐ India - (Alternative 3)
- (B) ☐ Russia - (Alternative 1)
- (C) ☐ **China - (Alternative 4)**
- (D) ☐ United States - (Alternative 2)

Question No.16

1.00

Bookmark ☐

What is the nuclear number of barielium?

- (A) ☐ **4 - (Optional 3)**
- (B) ☐ 2 - (Optional 1)
- (C) ☐ 3 - (Optional 4)
- (D) ☐ 1 - (Optional 2)

Question no.17

1.00

Bookmark ☐

The Chief Election Commissioner is elected by whom?

- (A) ☐ By the High Court Judges - (Optional 4)
- (B) ☒ **By the President of India - (Alternative 2)**
- (C) ☐ By the Prime Minister of India - (Alternative 1)
- (D) ☐ By Chief Justice of India - (Optional 3)

Question No.18

1.00

Bookmark ☐

Who established the Rashtrakuta dynasty?

- (A) ☒ **Dantidurg - (Alternative 4)**
- (B) ☐ Pulcchein - (Alternative 1)
- (C) ☐ Rajaraja Chola - (Alternative 2)
- (D) ☐ Agniputra - (Alternative 3)

Question No.19

1.00

Bookmark ☐

When did the second Round Table Conference be held?

- (A) ☐ 1929 - (Optional 1)
- (B) ☐ 1940 - (Alternative 3)
- (C) ☐ 1950 - (Alternative 4)
- (D) ☒ **1931 - (Alternative 2)**

Question No.20

1.00

Bookmark ☐

The statue of the world famous Gomateshwar is located in which of the following states?

- (A) ☐ Gujarat - (Alternative 4)
- (B) ☐ West Bengal - (Alternative 2)
- (C) ☒ **Karnataka - (Alternative 1)**
- (D) ☐ Punjab - (Alternative 3)

Question no.21

1.00

Bookmark ☐

'Do or Die', who gave this slogan?

- (A) ☐ Lala Lajpat Rai - (Alternative 3)
- (B) ☒ **Mahatma Gandhi - (Alternative 4)**
- (C) ☐ Sardar Vallabh Bhai Patel - (Alternative 2)
- (D) ☐ Jawaharlal Nehru - (Alternative 1)

Question no.22

1.00

Bookmark ☐

In which of the following years was the August Proposal brought out by Lord Linlithgow?

- (A) ☐ 1939 - (Alternative 4)
- (B) ☒ **1940 - (Alternative 1)**

- (C) ☐ 1946 - (Alternative 3)
(D) ☐ 1942 - (Alternative 2)

Question no.23

1.00

Bookmark ☐

What is the name of the first player to take 500 wickets in Cricket Test matches?

- (A) ☐ Javagal Srinath - (Alternative 3)
(B) ☐ Harbhajan Singh - (Alternative 2)
(C) ☒ **Anil Kumble - (Alternative 4)**
(D) ☐ Kapil Dev - (Alternative 1)

Question no.24

1.00

Bookmark ☐

When was the proclamation of 'Queen Victoria' being controlled by the Indian government?

- (A) ☐ 1947 - (Alternative 1)
(B) ☐ 1957 - (Alternative 4)
(C) ☐ 1951 - (Alternative 3)
(D) ☒ **1858 - (Alternative 2)**

Question No.25

1.00

Bookmark ☐

When was the national anthem of India adopted?

- (A) ☐ August 15, 1950 - (Alternative 4)
(B) ☒ **January 24, 1950 (Alternative 3)**
(C) ☐ January 26, 1947 - (Alternative 1)
(D) ☐ August 15, 1947 - (Alternative 2)

Question no.26

1.00

Bookmark ☐

What is the full form of 'IPPB'?

- (A) ☒ **India Post Payments Bank - (Alternative 4)**
(B) ☐ International Post Payments Bank - (Alternative 1)
(C) ☐ India Personal Payments Bank - (Alternative 2)
(D) ☐ India Postal Payment Bank - (Alternative 3)

Question no.27

1.00

Bookmark ☐

Which of the following years was declared by the United Nations as the "International Year of Biodiversity"?

- (A) ☐ 2009 - (Optional 3)
(B) ☒ **2010 - (Alternative 2)**
(C) ☐ 2007 - (Alternative 4)
(D) ☐ 2011 - (Optional 1)

Question no.28

1.00

Bookmark ☐

Durand Cup is related to which of the following games?

- (A) ☒ **Football - (Alternative 3)**
- (B) ☐ Chess - (Alternative 1)
- (C) ☐ Golf - (Alternative 4)
- (D) ☐ Sailing - (Alternative 2)

Question no.29

1.00

Bookmark ☐

Where is Rana Pratap Sagar Dam situated?

- (A) ☒ **Rajasthan - (Alternative 1)**
- (B) ☐ Tamil Nadu - (Alternative 4)
- (C) ☐ Sikkim - (Alternative 3)
- (D) ☐ Karnataka - (Alternative 2)

Question No.30

1.00

Bookmark ☐

The change in the liquid (water) of vapor, which physical action is called?

- (A) ☐ Precipitation - (Alternative 2)
- (B) ☒ **Condensation - (Alternative 3)**
- (C) ☐ Vaphan - (Alternative 1)
- (D) ☐ Vibration - (Alternative 4)

Question No.31

1.00

Bookmark ☐

_____ nutrition is defined as 'synthesis of organic molecules by adopting simple inorganic substances'.

- (A) ☒ **Autotrophic - (Optional 1)**
- (B) ☐ Heterogeneous - (Alternative 2)
- (C) ☐ Pneumatic nutrition - (Alternative 4)
- (D) ☐ Anaerobic Nutrition - (Alternative 3)

Question No.32

1.00

Bookmark ☐

Where is the idol food located?

- (A) ☐ Dippan - (Alternative 2)
- (B) ☐ Firozabad - (Alternative 1)
- (C) ☒ **Fatehpur Sikri - (Alternative 4)**
- (D) ☐ Karol Bagh - (Alternative 3)

Question No.33

1.00

Bookmark ☐

Where is the headquarters of 'Pension Fund Regulatory and Development Authority' (PFRDA)?

- (A) ☐ Mumbai - (Alternative 3)
- (B) ☐ Kolkata - (Alternative 4)
- (C) ☐ Hyderabad - (Alternative 1)

(D) ☐ **New Delhi - (Alternative 2)**

Question No.34

1.00

Bookmark ☐

In which of the following countries is Lord's Stadium located?

- (A) ☐ Australia - (Alternative 4)
(B) ☐ **England - (Alternative 3)**
(C) ☐ Austria - (Alternative 2)
(D) ☐ Sri Lanka - (Alternative 1)

Question No.35

1.00

Bookmark ☐

Puducherry comes under the jurisdiction of which High Court?

- (A) ☐ Calcutta High Court - (Alternative 2)
(B) ☐ **Madras High Court - (Alternative 1)**
(C) ☐ Hyderabad High Court - (Alternative 4)
(D) ☐ Guwahati High Court - (Alternative 3)

Question No.36

1.00

Bookmark ☐

How many times has the National Emergency been implemented in India?

- (A) ☐ Never - (Optional 4)
(B) ☐ **Three times - (Optional 1)**
(C) ☐ Twice - (Optional 2)
(D) ☐ Only once - (Optional 3)

Question No.37

1.00

Bookmark ☐

Which state has created the brand ambassador of Hima Das, a short distance runner?

- (A) ☐ Bihar - (Alternative 1)
(B) ☐ Goa - (Alternative 4)
(C) ☐ Himachal Pradesh - (Alternative 3)
(D) ☐ **Assam - (Alternative 2)**

Question No.38

1.00

Bookmark ☐

Amravati architecture was first protected by which rulers?

- (A) ☐ **Satavahana Dynasty - (Alternative 3)**
(B) ☐ Nand Dynasty - (Alternative 1)
(C) ☐ Wakataka Dynasty - (Alternative 4)
(D) ☐ Mauryan dynasty - (Alternative 2)

Question No.39

1.00

Bookmark ☐

By which act was the process of decentralization of the legislative powers of Madras and

Bombay?

- (A) ☐ Morley Minto Correction, 1909 - (Alternative 3)
- (B) ☐ Montagu Chelmsford Reforms, 1919 - (Alternative 4)
- (C) ☐ Better rule of law 1858 - (Alternative 1)
- (D) ☐ **Indian Council Act, 1861 - (Alternative 2)**

Question No.40

1.00

Bookmark ☐

Kalahari Desert is located in which continent?

- (A) ☐ **Southern Africa - (Alternative 3)**
- (B) ☐ South America - (Alternative 1)
- (C) ☐ North America - (Alternative 2)
- (D) ☐ North Africa - (Alternative 4)

Question No.41

1.00

Bookmark ☐

The formula for knowing stress is:

- (A) ☐ **Force / Area - (Optional 1)**
- (B) ☐ Force / mass - (Alternative 2)
- (C) ☐ Mass / Area - (Optional 3)
- (D) ☐ Force / Time - (Optional 4)

Question No.42

1.00

Bookmark ☐

How many parliamentary constituencies are there in Union Territory of Delhi?

- (A) ☐ **7 - (Optional 3)**
- (B) ☐ 4 - (Optional 4)
- (C) ☐ 5 - (Optional 2)
- (D) ☐ 1 - (Optional 1)

Question No.43

1.00

Bookmark ☐

Who was the first Indian Governor General of Independent India?

- (A) ☐ **C. Rajagopalachari - (Alternative 2)**
- (B) ☐ Lord Wavell - (Alternative 4)
- (C) ☐ Lord Mountbatten - (Alternative 1)
- (D) ☐ Dr. Rajendra Prasad - (Alternative 3)

Question no.44

1.00

Bookmark ☐

Alai Darwaza was built by whom?

- (A) ☐ Iltutmish - (Alternative 4)
- (B) ☐ **Allauddin Khilji - (Alternative 1)**
- (C) ☐ Feroz Shah Tughlaq - (Alternative 2)
- (D) ☐ Sikandar Lodi - (Alternative 3)

Question No.45

1.00

Bookmark ☐

What is the surname of Shoaib Akhtar?

- (A) ☒ **Rawalpindi Express - (Alternative 2)**
- (B) ☐ The Wal - (Alternative 3)
- (C) ☐ Jamie - (Alternative 4)
- (D) ☐ Flying Man - (Alternative 1)

Question No.46

1.00

Bookmark ☐

Which of the following is a natural source of acetic acid?

- (A) ☐ Milk - (Alternative 2)
- (B) ☒ **Lemon - (Alternative 4)**
- (C) ☐ Potatoes - (Alternative 3)
- (D) ☐ Tamarind - (Alternative 1)

Question no.47

1.00

Bookmark ☐

Who is the Deputy Chairman of the National Commission?

- (A) ☐ Dr. Y. V. Reddy - (Alternative 1)
- (B) ☐ Dr. Vijay L. Kelkar - (Alternative 2)
- (C) ☒ **Dr. Rajiv Kumar - (Alternative 4)**
- (D) ☐ Dr. M.K. Jain - (Alternative 3)

Question no.48

1.00

Bookmark ☐

What is the name of Kenya's currency?

- (A) ☐ Kenyan Dollar - (Alternative 2)
- (B) ☐ Kenyan Ringgit - (Alternative 3)
- (C) ☒ **Kenyan Shilling - (Alternative 1)**
- (D) ☐ Kenyan Rupee - (Alternative 4)

Question No.49

1.00

Bookmark ☐

What is the radius of the Earth?

- (A) ☐ $0.37 \times 10^6 \text{m}$ - (Optional 1)
- (B) ☐ $2.37 \times 10^6 \text{m}$ - (Optional 3)
- (C) ☒ **$6.37 \times 10^6 \text{m}$ - (Optional 2)**
- (D) ☐ $4.37 \times 10^6 \text{m}$ - (Alternative 4)

Question No.50

1.00

Bookmark ☐

The pseudo-force acting to bend or push an object out of the center is called -

☐

- (A) Section Force - (Optional 4)
(B) ☐ Central Force - (Alternative 2)
(C) ☒ Upper central force - (Alternative 3)
(D) ☐ Frictional Force - (Optional 1)

Question No.51

1.00

Bookmark ☐

A question has been given in this question and a statement related to it. Read the passage carefully and review the statement based on it.

Deficiency in climate change, agricultural land and other resources are important reasons for the decrease in food items, due to which it is becoming difficult for people of any planet to meet the food requirement (hunger). So on Wednesday, the Food and Agriculture Organization of the United Nations appealed to encourage new techniques and policies to 'zero down the index of hunger'. It has been said in the report that due to population growth, demand has also increased on the affordable prices of nutritious food, but due to the extreme exploitation by man, due to the situation of land, water and climate change, due to the miserable condition of natural resources, It is impossible to supply it.

Millions of people are far from access to food security. They are far away from access to adequate and cheap food, which can have many causes but poverty is the biggest reason for them. But other causes of hunger problems include civil strife and many other types of war. Yemen, where the dead from an aid group Save the Children says that there are about 85,000 child hunger under the age of 5 years there, killed thousands of civilian air strikes by coalition Saudi leadership

statement: United The Food and Agriculture Organization of the nation is working to speed up the index of hunger in the world rapidly.

Select the most suitable option below.

A-statement is absolutely true.

B-Query is probably true.

C-statement can not be reviewed.

D-statement is completely false.

- (A) ☐ B - (Alternative 2)
(B) ☒ A - (Alternative 1)
(C) ☐ D - (Alternative 4)
(D) ☐ C - (Alternative 3)

Question No.52

1.00

Bookmark ☐

Find the next number in the following series:

18, 20, 26, 38, 58, ?

- (A) ☐ 98 - (Optional 1)
(B) ☒ 88 - (Optional 3)
(C) ☐ 92 - (Alternative 2)
(D) ☐ 104 - (Alternative 4)

Question No.53

1.00

Bookmark ☐

Read the given information carefully and answer the questions related to it.

Eight children A, B, C, D, E, F, G and H are sitting outside on a circular table thus facing the gap between each of the

- i) A and H are sitting in front of each other.
- ii) D is sitting in the second position on the right of H, which is sitting right next to C.
- iii) E is not sitting next to D or A.
- iv) B is sitting in the middle of the middle of A and E and on the right side of F.

If the location of D is replaced by the position E and the position of A and the location of B is shifted to H, then which statement given in the new sequence will be correct?

- (A) ☐ A sits at the third position on the right of F - (Alternative 1)
- (B) ☐ F and H are seamless - (Alternative 2)
- (C) ☐ G and C sit opposite to each other - (Alternative 4)
- (D) ☐ **Sits between B, F and C - (Optional 3)**

Question No.54

1.00

Bookmark ☐

In this question three statements and related three conclusions have been given. You should consider the things given in the statements as truth and to determine which conclusions are relevant in relation to the statements?

Statement: Some cement bricks are. All bricks are sand. All are cement stones.

Conclusion:

- i. Some stones are brick
- ii. Some sand cements are
- iii. There are some cement stones

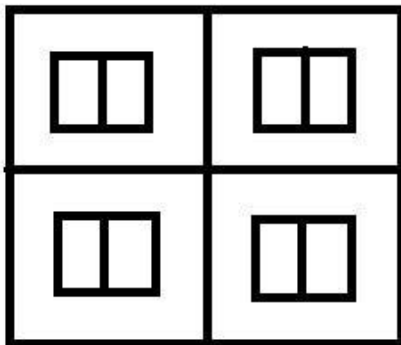
- (A) ☐ **All Follow - (Optional 4)**
- (B) ☐ Only i - (Optional 1)
- (C) ☐ Only i and iii - (Alternative 2)
- (D) ☐ Only ii and iii - (optional 3)

Question no.55

1.00

Bookmark ☐

How many classes are there in the given picture?



- (A) ☐ 15 - (Optional 3)
- (B) ☐ 12 - (Optional 2)
- (C) ☐ **9 - (Optional 1)**
- (D) ☐ 16 - (Optional 4)

Question no.56

1.00

Bookmark ☐

On the basis of the logic used in the first pair, select from the substitute alternate question mark in the second pair.

Book: Paper :: Bread: ??

- (A) ☐ Latex - (Optional 3)
- (B) ☐ Pulp - (Alternative 1)
- (C) ☐ Floor - (Optional 4)
- (D) ☐ **Flour - (Alternative 2)**

Question no.57

1.00

Bookmark ☐

In this question the relation between the different characters has been given in the statement. Two conclusions related to the statement have been given.

Statement: $T = E > R \geq M < I \leq N < A < L$

CONCLUSION:

- i) $T \leq N$
- ii) $M < L$

Select the appropriate of the following options.

- A. The only conclusion i is logical is
- B. only the conclusions ii is logical
- C. Either the conclusions i or ii is rational
- D. Neither conclusion ii nor rational is
- E. i and ii both conclusions are rational.

- (A) ☐ A - (Alternative 1)
- (B) ☐ **B - (Alternative 2)**
- (C) ☐ D - (Alternative 4)
- (D) ☐ C - (Alternative 3)

Question no.58

1.00

Bookmark ☐

On the basis of the logic used in the first pair, select from the substitute alternate question mark in the second pair.

Climatology: Climate :: Craniology: ??

- (A) ☐ Drugs - (Alternative 3)
- (B) ☐ Minerals - (Alternative 2)
- (C) ☐ **Skull - (Alternative 4)**
- (D) ☐ Shells - (Alternative 1)

Question No.59

1.00

Bookmark ☐

Read the given information carefully and answer the questions related to it.

The eight friends A, B, C, D, E, F, G and H are sitting on the outside in a circular manner that there is an interval between each of them. (Not necessarily their order)

- i) A and H are sitting in front of each other.
- ii) D is sitting in the second position on the right of H, which is sitting right next to C.
- iii) E is not sitting next to D or A.
- iv) B is sitting in the middle of the middle of A and E and on the right side of F.

Who is sitting in the second place on the left side of H?

- (A) ☐ A - (Alternative 3)

(B) ☐ E - (Alternative 2)

(C) ☐ D - (Alternative 1)

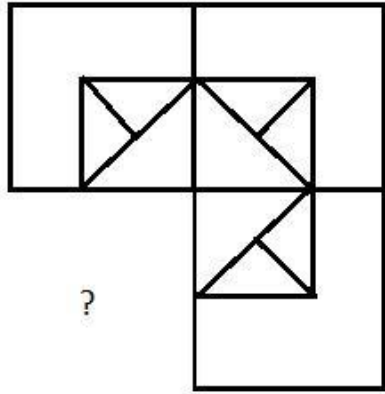
(D) ☐ G - (Alternative 4)

Question No.60

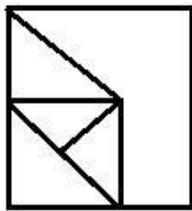
1.00

Bookmark ☐

Choose from the selection of the correct shape to complete the given picture:

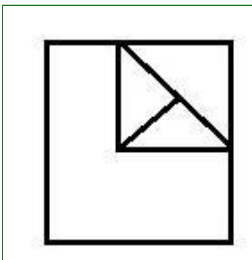


(A) ☐



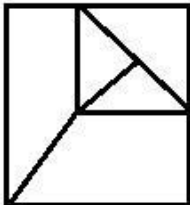
- (Optional 1)

(B) ☐



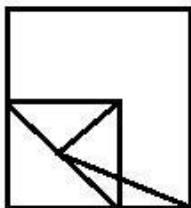
- (Optional 3)

(C) ☐



- (Optional 2)

(D) ☐



- (Optional 4)

Question No.61

1.00

PLANTS is codeed as KOZMGH in a fixed code language. How will FUTURE be coded in the same language?

- (A) ☐ **UFGFIV - (Optional 1)**
 (B) ☐ UFGFIU - (Optional 3)
 (C) ☐ UFGIFV - (Alternative 2)
 (D) ☐ UFIGVF - (Optional 4)

Question No.62

1.00

Bookmark ☐

In a fixed code language, DEFEND is coded as JIJKIS. How will KILLER be coded in the same language?

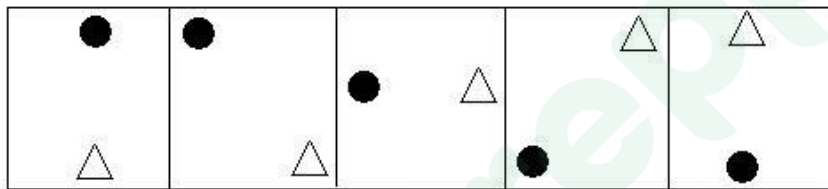
- (A) ☐ MOPPVI - (Optional 3)
 (B) ☐ **NPQQWJ - (Optional 4)**
 (C) ☐ NPQOWJ - (Optional 2)
 (D) ☐ MOPPVJ - (Optional 1)

Question No.63

1.00

Bookmark ☐

Do the selection of suitable pictures to come forth in the given series?

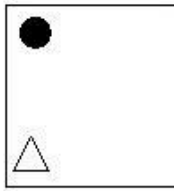


- (A) ☐ - (Optional 4)

- (B) ☐ - (Optional 2)

- (C) ☐ - (Optional 1)

(D)



- (Optional 3)

Question No.64

1.00

Bookmark ☐

In this question, a statement and related two conclusions have been given in the form of i and ii. Assuming the statements given in the statements as true, to determine which conclusions are logical in relation to the statements?

Statement: Demand is inversely proportionate to supply.

Conclusion:

i). If demand increases, then supply also increases.

ii). If the supply decreases, the demand increases.

Select the one most suitable in the following options:

A. The only conclusion i is logical is

B. only the conclusions ii is logical C. Either the conclusions i or ii is rational D. Neither conclusion ii nor rational is E. i and ii both conclusions are rational.

(A) ☐ B - (Alternative 2)

(B) ☐ C - (Alternative 3)

(C) ☐ E - (Alternative 4)

(D) ☐ A - (Alternative 1)

Question No.65

1.00

Bookmark ☐

In this question two statements and related two findings have been given in the form of i and ii. You should consider the things given in the statements as truth and to decide which conclusions are logical in relation to the statements?

Statement: All plants are trees, all trees are large.

Conclusion:

i). There are some big trees.

ii). All plants are big.

Select the one most suitable in the following options:

A. The only conclusion i is logical is

B. The only conclusion ii is logical is

C. either the conclusions i or ii is rational

D. Neither conclusion ii nor rational is

E. i and ii both conclusions are rational.

(A) ☐ B - (Alternative 2)

(B) ☐ E - (Alternative 4)

(C) ☐ C - (Alternative 3)

(D) ☐ A - (Alternative 1)

Question No.66

1.00

Bookmark ☐

On the basis of the logic used in the first pair, select from the substitute alternate question mark in the second pair.

4234: 13 :: 2625: ??

Latest Sarkari Jobs, Govt Exam Results,
Vacancies and updates on one click

Know More

- (A) ☐ 19 - (Optional 3)
(B) ☐ 13 - (Optional 1)
(C) ☐ **15 - (Optional 2)**
(D) ☐ 17 - (Optional 4)

Question No.67

1.00

Bookmark ☐

Find the next number in the following series:

17, 19, 35, 109, 431, ?

- (A) ☐ 1729 - (Optional 1)
(B) ☐ 2155 - (Optional 3)
(C) ☐ **2161 - (Alternative 2)**
(D) ☐ 1719 - (Alternative 4)

Question No.68

1.00

Bookmark ☐

A question has been given in this question and a statement related to it. Read the passage carefully and review the statement based on it.

Deficiency in climate change, agricultural land and other resources are important reasons for the decrease in food items, due to which it is becoming difficult for people of any planet to meet the food requirement (hunger). So on Wednesday, the Food and Agriculture Organization of the United Nations appealed to encourage new techniques and policies to 'zero down the index of hunger'. It has been said in the report that due to population growth, demand has also increased on the affordable prices of nutritious food, but due to the extreme exploitation by man, due to the situation of land, water and climate change, due to the miserable condition of natural resources, It is impossible to supply it.

Millions of people are far from access to food security. They are far away from access to adequate and cheap food, which can have many causes but poverty is the biggest reason for them. But other causes of hunger problems include civil strife and many other types of war. Yemen, where the killing of thousands of civil air strikes by coalition Saudi leadership, there died from an aid group Save the Children says that there are about 85,000 child hunger under the age of 5 years
Statement: Food For lack of supply, pollution is not responsible for climate change or lack of agricultural land.

Select the most suitable option below.

A-statement is absolutely true.

B-Query is probably true.

C-statement can not be reviewed.

D-statement is completely false.

- (A) ☐ C - (Alternative 3)
(B) ☐ **D - (Alternative 4)**
(C) ☐ B - (Alternative 2)
(D) ☐ A - (Alternative 1)

Question No.69

1.00

Bookmark ☐

Select the water image of the given shape with the options.

PHONE

(A) ☐ **PHONE** - (Optional 3)

(B) ☐ **PHONE** - (Optional 4)

(C) ☐ **PHONE** - (Optional 2)

(D) ☐ **PHONE** - (Optional 1)

Question No.70

1.00

Bookmark ☐

Find the next number in the following series:
249, 224, 237, 212, 225,?

- (A) ☐ **200 - (Optional 1)**
(B) ☐ 213 - (Alternative 3)
(C) ☐ 250 - (Optional 4)
(D) ☐ 238 - (Alternative 2)

Question No.71

1.00

Bookmark ☐

Four of the following given below are similar in some way and so they form a group among themselves. Which of these is not related to this group?

ADG, PSV, CFI, JLN, TWZ

- (A) ☐ TWZ - (Alternative 2)
(B) ☐ PSV - (Optional 3)
(C) ☐ CFI - (Optional 1)
(D) ☐ **JLN - (Alternative 4)**

Question No.72

1.00

Bookmark ☐

R and T, Q have two sons whose daughter is S. P is the life partner of S (husband / wife). What is the relation between P's Q?

- (A) ☐ Daughter - (Alternative 4)
(B) ☐ Bahu - (Alternative 2)
(C) ☐ Cage - (Alternative 3)

☐

(D) **Son-in-law (alternative 1)**

Question No.73

1.00

Bookmark ☐

Four of the following given below are similar in some way and hence they form a group among themselves. Which of these is not related to this group?

P, J, C, N, H

- (A) ☐ H - (Alternative 3)
(B) ☐ P - (Alternative 2)
(C) ☒ **C - (Alternative 1)**
(D) ☐ N - (Alternative 4)

Question No.74

1.00

Bookmark ☐

In this question, there are three statements showing the relationship between the letters. Three findings related to them are given i, ii, and iii. Assuming the statements as truth, decide which conclusions are completely true in relation to the statements.

Statement: $S > H > U = N$; $N \geq A > T = E$; $E < V < W$

Conclusion:

i) $S > E$

ii) $N > W$

iii) $U \geq A$

- (A) ☐ All - (Optional 4)
(B) ☒ **I only and iii - (optional 1)**
(C) ☐ Only iii - (Alternative 3)
(D) ☐ I and ii only - (Alternative 2)

Question No.75

1.00

Bookmark ☐

Four of the following given below are similar in some way and so they form a group among themselves. Which of these is not related to this group?

Eating, Chewing, Drinking, Munching, Biting

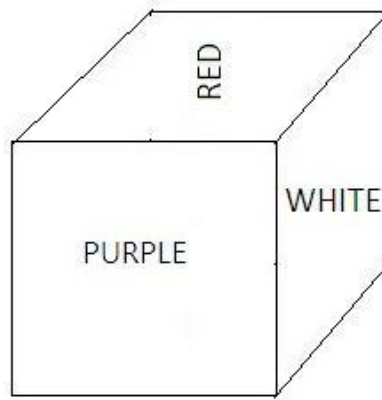
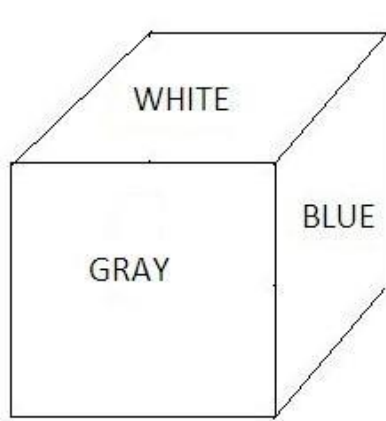
- (A) ☐ Munching - (Alternative 2)
(B) ☐ Chewing - (Alternative 4)
(C) ☒ **Drinking - (Alternative 3)**
(D) ☐ Eating - (Alternative 1)

Question No.76

1.00

Bookmark ☐

Each surface of a single dice shown as per the picture below is painted with purple, red, yellow, blue, gray and white colors. Yellow surface What color is the surface contrasted with?



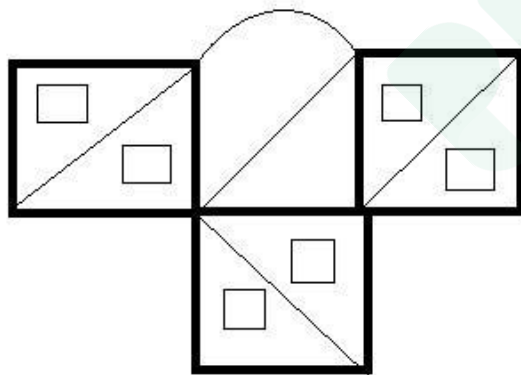
- (A) ☐ Blue - (Alternative 2)
- (B) ☐ Red - (Alternative 1)
- (C) ☐ **White - (Optional 3)**
- (D) ☐ Gray - (Alternative 4)

Question No.77

1.00

Bookmark ☐

How many right angled triangles can be made from the given picture?



- (A) ☐ **7 - (Optional 2)**
- (B) ☐ 14 - (Optional 4)
- (C) ☐ 10 - (Optional 1)
- (D) ☐ 9 - (Optional 3)

Question No.78

1.00

Bookmark ☐

Pointing to a girl, a woman said to a boy, "This is the daughter of uncle, son of the husband of your grandmother's only child." What is that girl's relationship with the boy?

- (A) ☐ Daughter - (Alternative 4)
- (B) ☐ Niece - (alternative 2)
- (C) ☐ Sister - (Alternative 1)
- (D) ☐ Cousin - (Alternative 3)

- (C) **Cage - (Alternative 3)**
(D) ☐ Sister - (Alternative 1)

Question No.79

1.00

Bookmark ☐

If the mirror is placed on the shaded line then the correct mirror image of the given picture will be-



- (A) ☐ - (Optional 3)
(B) ☐ - (Optional 4)
(C) ☐ - (Optional 2)
(D) ☐ - (Optional 1)

Question No. 80

1.00

Bookmark ☐

Find the next number in the following series:

4, 17, 46, 143, 424, ?

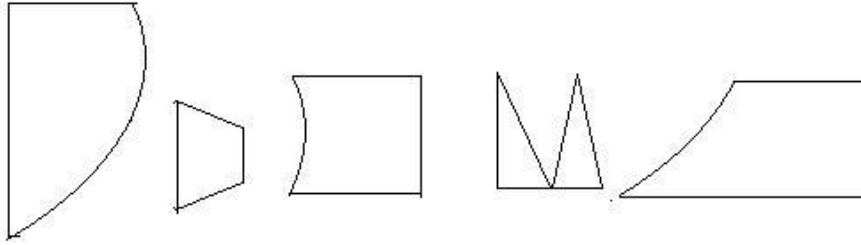
- (A) ☐ 1696 - (Alternative 4)
(B) ☐ **1277 - (Alternative 2)**
(C) ☐ 1257 - (Optional 3)
(D) ☐ 1701 - (Optional 1)

Question No.81

1.00

Bookmark ☐

From the following options, select the correct option that creates a perfect square (three of the 5 images are given below):



(1) (2) (3) (4) (5)

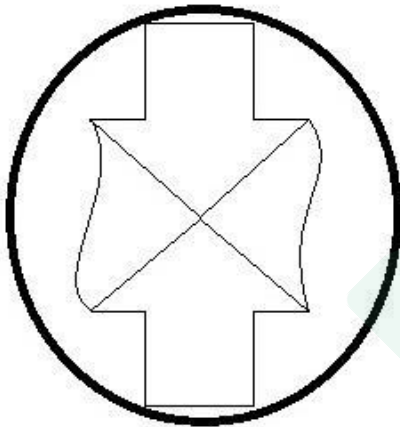
- (A) ☐ 1,4,5 - (Alternative 2)
 (B) ☐ **1,3,5 - (Optional 1)**
 (C) ☐ 1,2,3 - (Optional 4)
 (D) ☐ 2,3,5 - (Optional 3)

Question No.82

1.00

Bookmark ☐

What is the number of straight lines in the given picture?



- (A) ☐ 10 - (Optional 2)
 (B) ☐ 14 - (Optional 3)
 (C) ☐ 8 - (Optional 1)
 (D) ☐ **16 - (Optional 4)**

Question no.83

1.00

Bookmark ☐

Read the given information carefully and answer the questions related to it.

Eight children A, B, C, D, E, F, G and H are sitting outside on a circular table thus facing the gap between each of them. (Not necessarily their order)

- A and H are sitting in front of each other.
- D is sitting in the second position on the right of H, which is sitting right next to C.
- E is not sitting next to D or A.
- B is sitting in the middle of the middle of A and E and on the right side of F.

Who is sitting between A and D?

- (A) ☐ C - (Alternative 2)
- (B) ☐ B - (Optional 3)
- (C) ☐ F - (Alternative 4)
- (D) ☐ **G - (Alternative 1)**

Question no.84

1.00

Bookmark ☐

On the basis of the logic used in the first pair, select from the substitute alternate question mark in the second pair.

MJ: SP :: KN: ??

- (A) ☐ **QT - (Optional 3)**
- (B) ☐ QR - (Optional 4)
- (C) ☐ PM - (Alternative 1)
- (D) ☐ SR - (Alternative 2)

Question no.85

1.00

Bookmark ☐

Read the following statements and answer the question on their basis.

A @ B means A is B's son,

A # B means A is the daughter

of A, A is a B which is

A's brother, A% B means A is sister of B. In the

following Which alternative does it indicate that Z is the nephew of X?

- (A) ☐ **Z @ Y% X - (Optional 3)**
- (B) ☐ X% Y # Z - (Alternative 1)
- (C) ☐ X% Y @ Z - (Alternative 4)
- (D) ☐ Z # Y% X - (Optional 2)

Question no.86

1.00

Bookmark ☐

A train takes 83 seconds to cross the 378 meter long bridge. If the same train takes 29 seconds to cross a sign board, then know the length of the train?

- (A) ☐ 200m - (Optional 1)
- (B) ☐ 215 m - (Alternative 2)
- (C) ☐ **203m - (Optional 3)**
- (D) ☐ 205 m - (Alternative 4)

Question No.87

1.00

Bookmark ☐

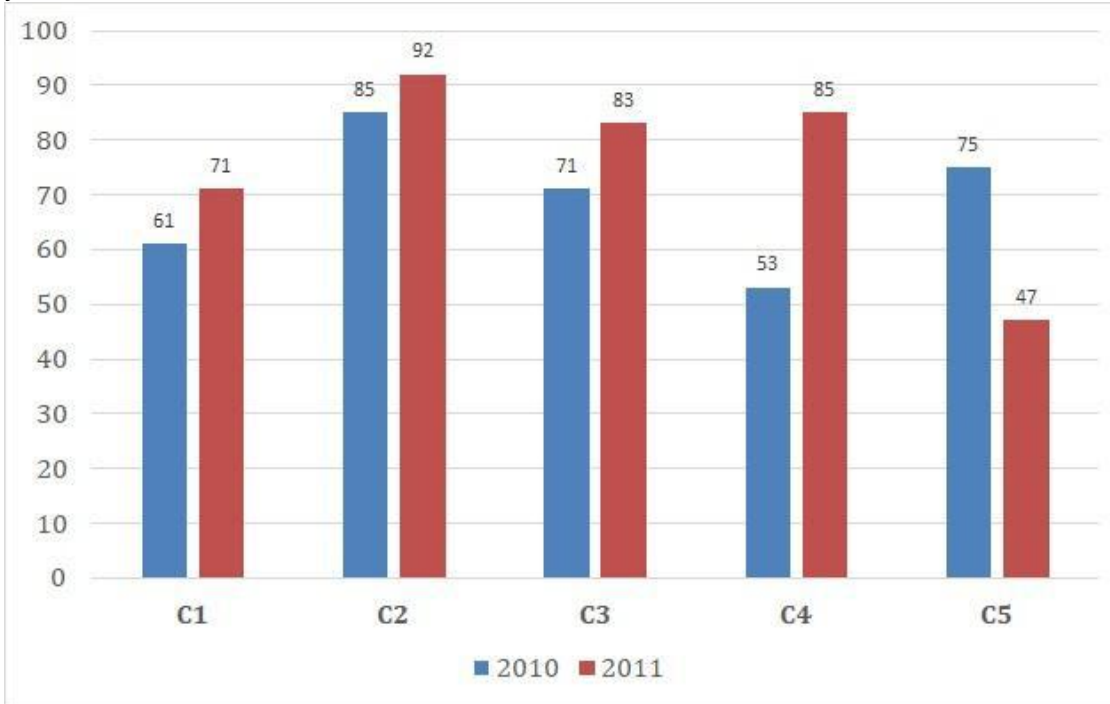
Instructions:

Study the graphs the following times and answer the question based on it?

Two consecutive years of the five branches of a publishing company (C1, C2, C3, C4 and C5) have been sold in 2010 and 2011 (in thousand) sales of books.

Find the ratio of the total sales done in both the years of branch C2 and the total sales in the two

years of branch C4?



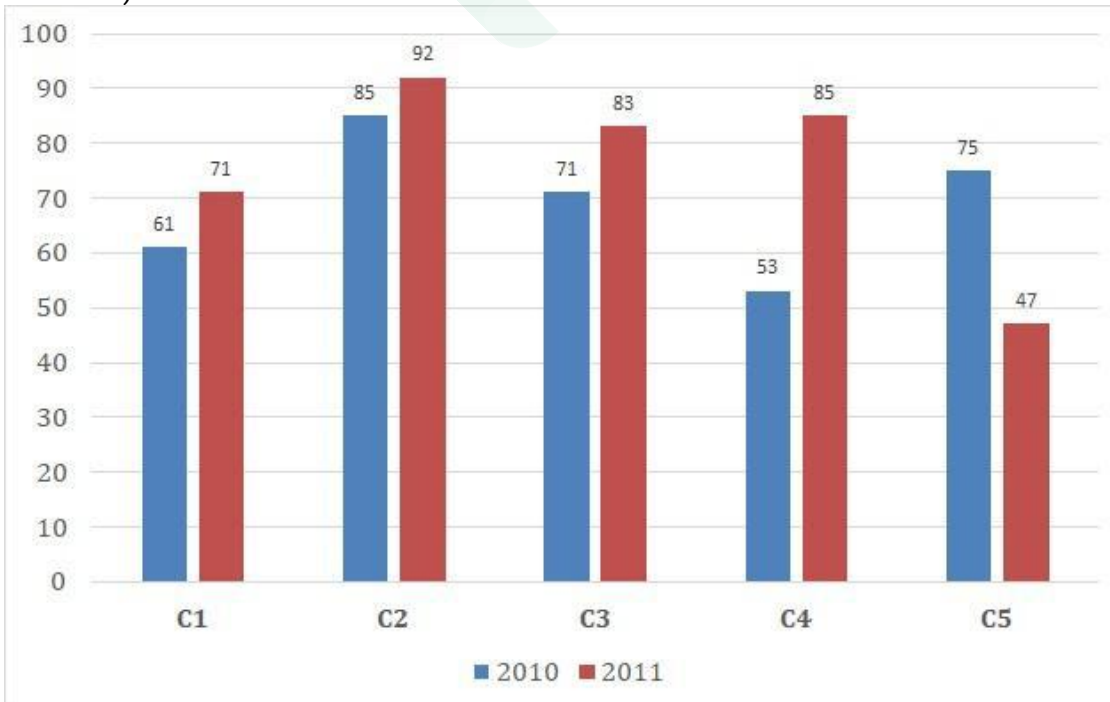
- (A) ☐ 59:46 - (Optional 4)
(B) ☐ 56:45 - (Optional 1)
(C) ☐ 58:47 - (Optional 3)
(D) ☐ 57:46 - (Optional 2)

Question no.88

1.00

Bookmark ☐

Instructions: Study the graphs the following times and answer the question based on it? Two consecutive years of the five branches of a publishing company (C1, C2, C3, C4 and C5) have been sold in 2010 and 2011 (in thousandths) of books. Find out the average of all the companies (in thousand) of sales in 2010?



- (A) ☐ 68 - (Optional 3)
☐

(B) ☒ 69 - (Alternative 2)

(C) ☐ 66 - (Alternative 4)

(D) ☐ 67 - (Optional 1)

Question No.89

1.00

Bookmark ☐

Simplify:

$$\frac{1}{15} \div \frac{1}{15} \div \frac{1}{15} \div \frac{1}{15} \div \frac{1}{15} = ?$$

(A) ☐ 3375 - (Alternative 2)

(B) ☐ 7744 - (Optional 4)

(C) ☐ 2274 - (Optional 3)

(D) ☐ 3357 - (Optional 1)

Question No.90

1.00

Bookmark ☐

A person reaches a 12-minute delay from the hostel by cycling at 60 kmph speed. If he used to run cycling at speeds of 80 kmph then it would reach 12 minutes early. Find the distance between the hostel and the college?

(A) ☐ 96 km - (Alternative 4)

(B) ☐ 66 km - (Alternative 3)

(C) ☐ 46 km - (Alternative 2)

(D) ☐ 86km - (Optional 1)

Question No.91

1.00

Bookmark ☐

There are 10 stiffs in a gift box. The average weight of the first 4 edges is 43 grams and the average weight of the remaining 6 curves is 44 grams. Find the total average weight (in grams) of all the curves?

(A) ☐ 43.8 - (Optional 4)

(B) ☐ 43.4 - (Optional 2)

(C) ☐ 43.6 - (Optional 3)

(D) ☐ 43.2 - (Optional 1)

Question No.92

1.00

Bookmark ☐

Based on a subsidiary project, there are 517 male and 517 women activists in the English company. The average productivity of all employees is 67 calls / day. If a male worker receives 67 calls / day, how much will the number of calls received by women employees per day?

(A) ☐ 65 - (Optional 1)

(B) ☐ 69 - (Optional 2)

- (C) ☐ 67 - (Optional 2)
(D) ☐ 63 - (Alternative 4)

Question No.93

1.00

Bookmark ☐

Simplify:

$$\sqrt{23.04} + \sqrt{86.49} + 9.3 = ?$$

- (A) ☐ 23.2 - (Optional 2)
(B) ☐ 23.1 - (Optional 1)
(C) ☐ 23.4 - (Optional 4)
(D) ☐ 23.3 - (Optional 3)

Question No.94

1.00

Bookmark ☐

Wesley donates 13% of his salary to an institution of blind, 12% of orphans, and 14% of the body of the organism, and gives 16% of his salary in the form of help in setting up medical camps. The remaining Rs 42345 He deposits in the bank for the monthly expenditure. How much does he donate for the orphanage institution?

- (A) ☐ Rs 11,392 - (Optional 4)
(B) ☐ Rs.1922 - Rs. (Optional 1)
(C) ☐ Rs 11,492 - (Optional 3)
(D) ☐ Rs 11,292 - (Optional 2)

Question No.95

1.00

Bookmark ☐

Amit divides 650 gifts into 4 children. First gift of the child in the part of the child, twice the gift which came in the other child's part, the gift of three children in the third child's part and four times the gift of the fourth child, the number of all is equal. How many toys did the first and the second child collectively?

- (A) ☐ 474 - (Optional 1)
(B) ☐ 448 - (Optional 3)
(C) ☐ 468 - (Alternative 4)
(D) ☐ 424 - (Optional 2)

Question No.96

1.00

Bookmark ☐

The Station Master decided to increase the length of a rectangular digital board by 9% and reduce the width by 9%. Find the total change in the area of the board?

- (A) ☐ 0.64% increase - (Optional 1)
(B) ☐ 0.64% reduction - (Optional 2)

(C) ☐ 0.81% decrease - (Optional 3)

(D) ☐ 0.81% increase - (Optional 4)

Question No.97

1.00

Bookmark ☐

Simplify:

$$(11^4)^2 \times \frac{1}{1331^2} \times 11 + 21 = ?$$

(A) ☐ 1253 - (Optional 2)

(B) ☐ 1452 - (Alternative 4)

(C) ☐ 1352 - (Alternative 3)

(D) ☐ 1252 - (Optional 1)

Question No.98

1.00

Bookmark ☐

The area of a square piece of glass is 961 cm², which is placed above a table. The width between the glass pieces and one side of the table is 9 cm. Find the length of the table?

(A) ☐ 47 cm - (Optional 1)

(B) ☐ 48 cm - (Optional 2)

(C) ☐ 50 cm - (Alternative 4)

(D) ☐ 49 cm - (Optional 3)

Question No.99

1.00

Bookmark ☐

The amount of compound interest and simple interest received in two years on the same amount is 50 rupees. If the interest rate is 4% annual, then calculate the amount invested (in Rs.)

(A) ☐ 32250 - (Alternative 2)

(B) ☐ 31250 - (Optional 1)

(C) ☐ 28250 - (Optional 3)

(D) ☐ 27250 - (Optional 4)

Question No.100

1.00

Bookmark ☐

If the cube with a $17\sqrt{3}$ cm diagonal is melted, then its height will be, if the length of the cuboid is equal to the arm of the cube and the width of the cuboid is 8.5 cm.

(A) ☐ 36 cm - (Optional 2)

(B) ☐ 32 cm - (Optional 3)

(C) ☐ 34 cm - (Optional 1)

(D) ☐ 30 cm - (Alternative 4)

Question No.101

1.00

Bookmark ☐

Find the product of those numbers, which is the smallest endowment (L. 90, and the greatest convergent (ms) 9?

- (A) ☐ 620 - (Alternative 3)
(B) ☐ **810 - (Optional 1)**
(C) ☐ 900 - (Alternative 4)
(D) ☐ 710 - (Optional 2)

Question No.102

1.00

Bookmark ☐

When the radius of the circle 12 times, how much of its circumference will increase the circumference of the circle of the previous?

- (A) ☐ 13 - (Optional 3)
(B) ☐ 11 - (Optional 1)
(C) ☐ **12 - (Optional 2)**
(D) ☐ 14 - (Optional 4)

Question No.103

1.00

Bookmark ☐

How can 792 mobile students be distributed to an equal number of students in a class?

- (A) ☐ 20 - (Optional 3)
(B) ☐ 14 - (Optional 1)
(C) ☐ 16 - (Optional 2)
(D) ☐ **24 - (Optional 4)**

Question No.104

1.00

Bookmark ☐

The ratio of Hakim, Kristo and Ganesh to Salah is 3: 5: 7. If Ganesha gets Rs 648 from the occupation, then how much is Kristo's salary (in Rs.)?

- (A) ☐ 820 - (Alternative 2)
(B) ☐ **810 - (Optional 1)**
(C) ☐ 830 - (Alternative 3)
(D) ☐ 840 - (Alternative 4)

Question No.105

1.00

Bookmark ☐

Selling an item for 3241 rupees will get 11% more profit from the loss obtained on selling the same item at 1342 rupees. Find the purchase price of that item?

- (A) ☐ Rs 2322 - (Optional 4)
(B) ☐ Rs 2422 - (Alternative 2)
(C) ☐ Rs 2224 - (Optional 3)
(D) ☐ **Rs 2242 - (Optional 1)**

Question No.106

1.00

Bookmark ☐

A shopkeeper keeps

by 39%. So,

let's know the total percentage gain or loss you get?

- (A) ☐ 14.44% Loss - (Optional 3)
(B) ☐ 14.44% profit - (Optional 1)
(C) ☐ 15.21% profit - (Optional 2)
(D) ☐ **15.21% Loss - (Optional 4)**

Question No.107

1.00

Bookmark ☐

1000km The ratio of time spent by Wiki and Rakesh in determining the distance is 41:37. Find the ratio of their motions.

- (A) ☐ 35:27 - (Optional 1)
(B) ☐ **37:41 - (Alternative 2)**
(C) ☐ 39:27 - (Optional 3)
(D) ☐ 27:39 - (Optional 4)

Question No.108

1.00

Bookmark ☐

No amount on compound interest is doubled to the original amount in 3 years. In how many years it will be 1024 times its original amount?

- (A) ☐ 32 years - (Optional 3)
(B) ☐ **30 years - (Alternative 2)**
(C) ☐ 34 years - (Optional 4)
(D) ☐ 28 years - (Alternative 1)

Question No.109

1.00

Bookmark ☐

6200, 8% of the annual interest rate has been invested. If after 5 years, that amount is withdrawn and half the amount is invested in the stock market, then what will be the remaining amount (in Rs.)?

- (A) ☐ 4240 - (Optional 3)
(B) ☐ 4540 - (Optional 1)
(C) ☐ **4340 - (Alternative 4)**
(D) ☐ 4440 - (Optional 2)

Question no.110

1.00

Bookmark ☐

Vimal receives 71 points out of 80 in French, 93 in 100 in English, 53 in 70 in Spanish and 47 in 50 in Japanese. Find the total percentage of the marks obtained by him?

- (A) ☐ 89% - (Optional 3)
(B) ☐ 87% - (Optional 1)
(C) ☐ **88% - (Optional 2)**
(D) ☐ 91% - (Optional 4)

Question No.111

1.00

Bookmark ☐

The average weight of 107 notebooks kept in a box is 10.7 kg. On the basis of 1 notebook in the box and its average weight is 10.9 kg. Know the least of new notebook?

- (A) ☐ 21.7 kg - (Optional 2)
(B) ☒ 21.5 kg - (Optional 1)
(C) ☐ 21.9 kg - (Optional 3)
(D) ☐ 21.3 kg - (Optional 4)

Question no.112

1.00

Bookmark ☐

Divide any number by 105, remaining 1 remains. By dividing the same number by 21, how much will the remainder get?

- (A) ☐ 17 - (Optional 3)
(B) ☒ 19 - (Optional 4)
(C) ☐ 20 - (Optional 1)
(D) ☐ 18 - (Optional 2)

Question No.113

1.00

Bookmark ☐

421! Find the number of trailing zeros in?

- (A) ☐ 95 - (Alternative 2)
(B) ☐ 103 - (Alternative 4)
(C) ☒ 101 - (Optional 3)
(D) ☐ 98 - (Optional 1)

Question No.114

1.00

Bookmark ☐

In the ratio of 7: 8: 6 in a box there are different types of old coins, whose value is Rs 1, Rs 5 and Rs 10 respectively. If the total value of coins is Rs 749, then Rs. 1. What is the total number of coins of value?

- (A) ☐ 51 - (Optional 4)
(B) ☒ 49 - (Optional 3)
(C) ☐ 45 - (Optional 1)
(D) ☐ 47 - (Alternative 2)

Question No.115

1.00

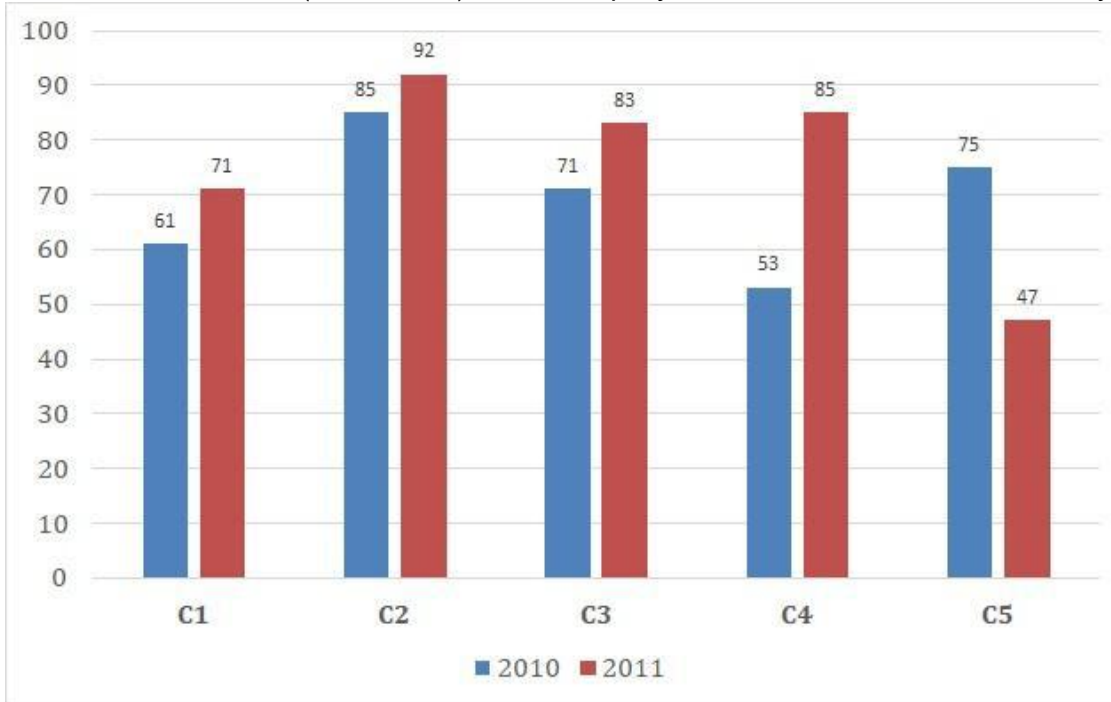
Bookmark ☐

Instructions:

Study the graphs the following times and answer the question based on it?

Two consecutive years of the five branches of a publishing company (C1, C2, C3, C4 and C5) have been sold in 2010 and 2011 (in thousandths) of books.

Find out the total sales (in thousand) of the company's branches C1, C3 and C5 in both years?



- (A) ☐ 408 - (Optional 3)
 (B) ☐ 405 - (Optional 1)
 (C) ☐ 406 - (Alternative 4)
 (D) ☐ 407 - (Alternative 2)

Question no.116

1.00

Bookmark ☐

Sheila walks at the speed of her usual speed ($12/13$) and determines a certain distance of 15 minutes more than the time it takes in normal speed. Calculate the normal time she takes in determining a certain distance.

- (A) ☐ 4 Hrs - (Optional 3)
 (B) ☐ 2 Hrs - (Optional 1)
 (C) ☐ 3 Hrs - (Alternative 2)
 (D) ☐ 1 Hr - (Optional 4)

Question No.117

1.00

Bookmark ☐

A bulb manufacturer found that 11% of their total product was poor. If the number of correct products is 6853, then find the number of bad products?

- (A) ☐ 827 - (Optional 3)
 (B) ☐ 867 - (Alternative 2)
 (C) ☐ 887 - (Optional 1)
 (D) ☐ 847 - (Alternative 4)

Question no.118

1.00

Bookmark ☐

A person travels at the speed of 15 kmph on the surface of an equatorial triangular plane, 20 kmph and speed of 30 kmph. Find his average speed?

- (A) ☐ 30 kmph - (Optional 2)

- (B) ☐ 20 kmph - (Optional 1)
(C) ☐ 24 kmph - (Alternative 4)
(D) ☐ 15 kmph - (Alternative 2)

Question No.119

1.00

Bookmark ☐

Simplify:

$$684 \div \left\{ \frac{3}{4} \left[\frac{16}{15} \right] - \frac{2}{3} \right\} = ?$$

- (A) ☐ 1350 - (Optional 3)
(B) ☐ 5130 - (Optional 1)
(C) ☐ 1530 - (Optional 4)
(D) ☐ 5310 - (Optional 2)

Question No.120

1.00

Bookmark ☐

A shopkeeper sells a product for Rs 1836 and earns 12.5% profit on it. How much will the half of the purchase price of that item be equal to?

- (A) ☐ Rs 861 - (Optional 2)
(B) ☐ Rs 816 - (Optional 3)
(C) ☐ Rs 842 - (Optional 4)
(D) ☐ Rs 824 - (Optional 1)



Latest Sarkari jobs, Govt Exam alerts, Results and Vacancies

- ▶ Latest News and Notification
- ▶ Exam Paper Analysis
- ▶ Topic-wise weightage
- ▶ Previous Year Papers with Answer Key
- ▶ Preparation Strategy & Subject-wise Books

To know more [Click Here](#)



www.prepp.in