

# CBSE CLASS 12 Biology SET 2 Question Paper with Solutions

Time Allowed :3 hours	Maximum Marks :70	Total Questions :33
-----------------------	-------------------	---------------------

## General Instructions

**Read the following instructions very carefully and strictly follow them:**

This question paper is divided into five sections:

1. The total duration of the examination is 3 hours. The question paper contains five sections -

**Section A: Questions 1 to 16 (MCQs) — 1 mark each**

**Section B: Questions 17 to 21 (Very Short Answer) — 2 marks each**

**Section C: Questions 22 to 28 (Short Answer) — 3 marks each**

**Section D: Questions 29 and 30 (Case-based) — 4 marks each**

**Section E: Questions 31 to 33 (Long Answer) — 5 marks each**

2. The total number of questions is 33, carrying a maximum of 70 marks.
3. All questions are compulsory.
4. The marking scheme is as follows:
  - (i) Each MCQ question carries 1 mark.
  - (ii) Each very short answer question carries 2 marks.
  - (iii) Each short answer question carries 3 marks.
  - (iv) Each case-based question carries 4 marks.
  - (v) Each long answer question carries 5 marks.
5. There is no overall choice. However, internal choices are provided in Sections B, D and E. A candidate has to attempt only one of the alternatives in such questions.
6. Kindly note that there is a separate question paper for Visually Impaired candidates.
7. Wherever necessary, neat and properly labelled diagrams should be drawn.

## Section - A

1. Choose the correct option that indicates the enzyme, ribozyme in bacteria that acts as a catalyst.

- (A) ( 28S rRNA )
- (B) ( 5.8S rRNA )
- (C) ( 26S rRNA )
- (D) ( 23S rRNA )

**Correct Answer:** (D) ( 23S rRNA )

**Solution:** Ribozymes are RNA molecules that have catalytic activity. In bacteria, the ribosome, which is responsible for protein synthesis, contains a ribozyme. The peptidyl transferase activity, which catalyzes the formation of peptide bonds between amino acids, is carried out by the 23S rRNA component of the large ribosomal subunit. Therefore, 23S rRNA in bacteria acts as a ribozyme.

### Quick Tip

**Quick Tip:** Remember that ribosomes are not just made of proteins; they also contain ribosomal RNA (rRNA). In bacteria, the large subunit of the ribosome has a specific rRNA molecule (23S rRNA) that acts like an enzyme to speed up the process of joining amino acids together during protein synthesis. This catalytic RNA is called a ribozyme.

---

2. When a pure tall pea plant (*Pisum sativum*) with green pod is crossed with a dwarf pea plant with yellow pod, how many dwarf pea plants, out of 16, will be produced in the F<sub>2</sub> generation?

- (A) ( 9 )
- (B) ( 3 )
- (C) ( 4 )
- (D) ( 1 )

**Correct Answer:** (C) ( 4 )

**Solution:** Let's denote the alleles as follows: Tall (T) is dominant over dwarf (t). Green pod (G) is dominant over yellow pod (g).

The parental cross is TTGG (pure tall, green pod) × ttgg (dwarf, yellow pod). The F<sub>1</sub> generation will all be heterozygous: TtGg (tall with green pods).

When the F<sub>1</sub> generation is self-crossed (TtGg × TtGg), the F<sub>2</sub> generation will have a phenotypic ratio of 9:3:3:1 for the four possible combinations of height and pod color (Tall, Green : Tall, Yellow : Dwarf, Green : Dwarf, Yellow).

Out of 16 offspring in the F<sub>2</sub> generation, the proportion of dwarf plants will be the sum of the Dwarf, Green and Dwarf, Yellow phenotypes. The genotypes for dwarf plants are ttGG, ttGg, and ttgg. From a dihybrid cross, the probability of getting a dwarf plant (tt) is  $\frac{1}{4}$ . Therefore, out of 16 plants, the number of dwarf plants will be

$$\left(\frac{1}{4} \times 16 = 4\right).$$

#### Quick Tip

**Quick Tip:** Remember the phenotypic ratio of a dihybrid cross in the F<sub>2</sub> generation is 9:3:3:1. The last two proportions (3:1) represent the recessive trait for one or both genes. In this case, dwarfism is recessive. So, the total proportion of dwarf plants is  $\frac{3}{16}$  (dwarf, green) +  $\frac{1}{16}$  (dwarf, yellow) =  $\frac{4}{16}$ .

---

**3. Some of the important goals of HGP are given below. Choose the correct goal of HGP.**

- (A) ( Identify approximately 20,000 - 30,000 genes in human DNA. )
- (B) ( Determine the sequence of two billion chemical base pairs of human DNA. )
- (C) ( Trace human history and disease associated sequences. )
- (D) ( Address the ethical, legal and social issues that may arise from the project. )

**Correct Answer:** (A) ( Identify approximately 20,000 - 30,000 genes in human DNA. )

**Solution:** The Human Genome Project (HGP) was an ambitious international research effort launched with the primary goal of determining the complete sequence of the human genome. Several key objectives were set for this project.

Option (A) correctly identifies one of the major goals: to identify all the approximately 20,000-25,000 genes in human DNA.

Option (B) is incorrect as the HGP aimed to determine the sequence of approximately 3 billion (not 2 billion) chemical base pairs that make up human DNA.

Option (C) describes applications and potential outcomes of having the complete human genome sequence, rather than a primary goal of the project itself. While the knowledge gained from HGP is used to trace human history and understand disease associations, it wasn't a primary goal in the initial stages.

Option (D) refers to ELSI (Ethical, Legal, and Social Implications) research program that ran parallel to the HGP. Addressing these issues was crucial due to the potential societal impact of the project, but it was a separate component, not a primary goal of sequencing the genome itself.

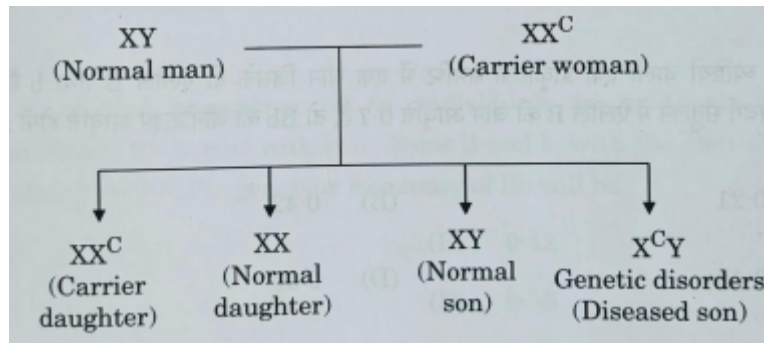
Therefore, the correct goal of the HGP among the given options is to identify approximately 20,000 - 30,000 genes in human DNA.

#### Quick Tip

**Quick Tip:** When thinking about the Human Genome Project's goals, remember the main focus was on understanding the blueprint of human life at the molecular level. This primarily involved identifying all the genes and determining the complete sequence of the DNA. While other aspects like ethical implications and applications are important, the core scientific goals were about mapping and sequencing the genome.

---

**4. Inheritance of which of the following traits is shown in the cross given below?**



**Choose the correct option from the following:**

- (A) ( Autosomal recessive trait )
- (B) ( X-linked dominant trait )
- (C) ( X-linked recessive trait )
- (D) ( Autosomal dominant trait )

**Correct Answer:** (C) ( X-linked recessive trait )

**Solution:** The cross involves a normal man (XY) and a carrier woman (X<sup>C</sup>X). The notation X<sup>C</sup>X indicates that the woman has one normal X chromosome and one X chromosome carrying the recessive allele for a genetic disorder (represented by C).

The offspring show the following genotypes:

XX<sup>C</sup> (Carrier daughter)

XX (Normal daughter)

XY (Normal son)

X<sup>C</sup>Y (Diseased son)

The fact that the disease appears only in the son and is inherited from a carrier mother suggests that the trait is X-linked recessive.

Let's analyze why other options are incorrect:

Autosomal recessive: If it were autosomal recessive, both parents would need to carry at least one recessive allele to have an affected child. Here, the father is normal.

X-linked dominant: If it were X-linked dominant, an affected father would pass the trait to all his daughters. Here, the father is normal, and the mother is a carrier, passing it to some but not all offspring.

Also, if the mother had the dominant trait, at least one of the daughters would show the trait if the father was normal.

Autosomal dominant: If it were autosomal dominant, at least one of the daughters would show the trait if the father was normal.

at least one parent would have the disease. Here, both parents are phenotypically normal (the mother is a carrier). Therefore, the inheritance pattern shown is consistent with an X-linked recessive trait.

#### Quick Tip

**Quick Tip:** Look for clues like the disease appearing more frequently in males, and carrier females passing the trait to their sons but not necessarily their daughters. This is a hallmark of X-linked recessive inheritance.

---

**5. Given below are few statements with reference to the human male reproductive system:**

1. Paired seminal vesicles, prostate gland and bulbourethral gland constitute the male accessory glands.
2. Secretions of the male accessory glands constitute the seminal plasma.
3. Secretions of the bulbourethral glands help in the lubrication of the penis.
4. Enlarged end of the the penis is known as foreskin.
5. Seminal plasma is rich in fructose, calcium and certain enzymes.

**Choose the option with all true statements from the given options:**

- (A) ( i), (ii) and (iv) )  
(B) ( (ii), (iii) and (v) )  
(C) ( (ii), (iv) and (v) )  
(D) ( (i), (iii) and (v) )

**Correct Answer:** (B) ( (ii), (iii) and (v) )

**Solution:** Let's evaluate each statement: (i) Paired seminal vesicles, prostate gland, and bulbourethral glands are indeed the male accessory glands. So, statement (i) is true.

(ii) The secretions from these accessory glands, along with the sperm produced in the testes, together form the seminal plasma. So, statement (ii) is true.

(iii) The bulbourethral glands secrete a lubricating fluid that helps in the lubrication of the penis during sexual activity. So, statement (iii) is true.

(iv) The enlarged end of the penis is called the glans penis, and it is covered by a loose fold of skin called the foreskin or prepuce. Therefore, statement (iv) is false.

(v) Seminal plasma is rich in fructose (which provides energy for sperm motility), calcium, and various enzymes that aid in sperm function. So, statement (v) is true.

Therefore, the true statements are (ii), (iii), and (v).

#### Quick Tip

**Quick Tip:** Remember the functions of each male reproductive accessory gland. Seminal vesicles provide fructose, prostate gland contributes to semen volume and provides enzymes, and bulbourethral glands secrete lubricating mucus. The foreskin is a covering of the glans penis, not the glans itself.

---

**6. If a natural population of 60 individuals is in Hardy-Weinberg equilibrium for a gene with two alleles B and b, with the gene frequency of allele B of 0.7, the genotype frequency of Bb will be:**

(A) ( 0.21 )

(B) ( 0.42 )

(C) ( 0.49 )

(D) ( 0.56 )

**Correct Answer:** (B) ( 0.42 )

**Solution:** According to the Hardy-Weinberg equilibrium, if there are two alleles for a gene in a population, say B and b, with frequencies  $p$  and  $q$  respectively, then  $p + q = 1$ . The genotype frequencies are given by  $p^2$  (for BB),  $2pq$  (for Bb), and  $q^2$  (for bb).

Given that the frequency of allele B ( $p$ ) is 0.7. Since ( $p + q = 1$ ), the frequency of allele b ( $q$ ) is ( $1 - p = 1 - 0.7 = 0.3$ ).

The genotype frequency of heterozygotes (Bb) is given by ( $2pq$ ). Substituting the values of ( $p$ ) and ( $q$ ): Frequency of Bb =  $2 \times 0.7 \times 0.3 = 2 \times 0.21 = 0.42$ .

The population size (60 individuals) is irrelevant for calculating the genotype frequency in Hardy-Weinberg equilibrium, as it describes the proportions of genotypes in the population.

### Quick Tip

**Quick Tip:** Remember the Hardy-Weinberg equations:  $p + q = 1$  and  $p^2 + 2pq + q^2 = 1$ . Here,  $p$  is the frequency of the dominant allele,  $q$  is the frequency of the recessive allele,  $p^2$  is the frequency of homozygous dominant genotype,  $q^2$  is the frequency of homozygous recessive genotype, and  $2pq$  is the frequency of the heterozygous genotype.

**7. In a DNA, the percentage of thymine is 20. What is the percentage of guanine in it?**

- (A) ( 20% )
- (B) ( 40% )
- (C) ( 30% )
- (D) ( 60% )

**Correct Answer:** (C) ( 30% )

**Solution:** According to Chargaff's rules for DNA base pairing:

The amount of adenine (A) is always equal to the amount of thymine (T). The amount of guanine (G) is always equal to the amount of cytosine (C). The sum of the percentages of all four bases (A, T, G, C) is 100%. Given that the percentage of thymine (T) is 20%. Therefore, the percentage of adenine (A) is also 20% (since  $A = T$ ).

The combined percentage of adenine and thymine is  $(20\% + 20\% = 40\%)$ .

The remaining percentage must be made up of guanine and cytosine: Percentage of  $(G + C) = (100\% - 40\% = 60\%)$ .

Since the amount of guanine (G) is equal to the amount of cytosine (C), the percentage of guanine is half of the combined percentage of G and C:

$$\text{Percentage of guanine (G)} = \left(\frac{60\%}{2} = 30\%\right).$$

### Quick Tip

**Quick Tip:** Remember Chargaff's rules:  $A=T$  and  $G=C$ . If you know the percentage of one base, you automatically know the percentage of its complementary base. The percentages of the two pairs must add up to 100

### 8. Select the statements that are true for the embryo of the flowering plants from the given options:

1. The zygote forms a proembryo and subsequently heart-shaped, globular and mature embryo.
2. Most zygotes divide to form embryo only after a certain amount of endosperm is formed.
3. The embryo develops at the micropylar end of the embryo sac.
4. A typical dicotyledonous embryo consists of an embryonal axis and a scutellum.

### Choose the correct option from the following:

- (A) ( i) and (ii) )  
(B) ( (ii) and (iii) )  
(C) ( (iii) and (iv) )  
(D) ( (i) and (iv) )

**Correct Answer:** (A) ( (i) and (ii) )

**Solution:** Let's evaluate each statement regarding the embryo development in flowering plants: (i) Following fertilization, the zygote undergoes a series of divisions to form the proembryo. This proembryo then develops through various stages, including globular, heart-shaped, and finally the mature embryo. So, statement (i) is true.

(ii) In many flowering plants, the zygote remains dormant for some time after fertilization. It starts dividing only after a certain amount of endosperm, which provides nourishment to the developing embryo, is formed. This ensures that the embryo has a sufficient food supply for its development. So, statement (ii) is true.

(iii) The embryo develops at the micropylar end of the embryo sac because the zygote is typically located at this end, near the egg apparatus where fertilization occurs. So, statement (iii) is true.

(iv) A typical dicotyledonous embryo consists of an embryonal axis (which later forms the radicle and plumule) and two cotyledons. The scutellum is a term used to describe the cotyledon in monocotyledonous embryos (like grasses), which is typically shield-shaped and helps in absorbing nutrients from the endosperm. So, statement (iv) is false.

Therefore, the true statements are (i), (ii), and (iii). However, option (A) only includes (i) and (ii), option (B) includes (ii) and (iii). Let me re-evaluate.

Upon careful review, statement (iii) is indeed true as the zygote is located at the micropylar end. Therefore, statements (i), (ii), and (iii) are true. However, this combination is not provided as an option. Let's re-examine statement (iv).

Statement (iv) is definitively false because scutellum is characteristic of monocots.

Considering the options provided, there might be a slight ambiguity or error in the question or the given options. However, based on standard textbook information:

(i) is true. (ii) is true. (iii) is true. (iv) is false. Given the available choices, the option that contains the maximum number of true statements is (A) with (i) and (ii). There might be an issue with the question or the provided options. However, if we must choose from the given options, (A) includes two correct statements.

#### Quick Tip

**Quick Tip:** Focus on the initial stages of embryo development (proembryo formation, dependence on endosperm) and the location of the zygote in the embryo sac. Also, remember the structural differences between dicot and monocot embryos regarding cotyledons (two in dicots, one - scutellum - in monocots).

---

### 9. Human Immunodeficiency Virus is a member of the group of viruses known as:

(A) ( Adenovirus )

(B) ( Retrovirus )

(C) ( Rhinovirus )

(D) ( Nucleopolyhedrovirus )

**Correct Answer:** (B) ( Retrovirus )

**Solution:** Human Immunodeficiency Virus (HIV) is a retrovirus. Retroviruses are characterized by having RNA as their genetic material. They use an enzyme called reverse transcriptase to synthesize DNA from their RNA genome. This DNA is then integrated into the host cell's genome, where it can be transcribed to produce new viral RNA and proteins. Adenoviruses are DNA viruses that typically cause respiratory illnesses. Rhinoviruses are also RNA viruses but belong to the Picornaviridae family and are the primary cause of the common cold. Nucleopolyhedroviruses are DNA viruses that infect insects. Therefore, HIV belongs to the group of viruses known as retroviruses.

#### Quick Tip

**Quick Tip:** Remember that retroviruses have RNA as their genetic material and utilize reverse transcriptase for replication. HIV is a classic example of a retrovirus.

---

**10. The animals that evolved into the first amphibians during evolutionary history were:**

(A) ( Archaeopteryx )

(B) ( Salamander )

(C) ( Coelacanth )

(D) ( Lobe fins )

**Correct Answer:** (D) ( Lobe fins )

**Solution:** The first amphibians are believed to have evolved from a group of bony fishes known as lobe-finned fishes (Sarcopterygii). These fishes possessed fleshy, lobed fins supported by bones, which are considered to be the precursors to the limbs of tetrapods (four-limbed vertebrates), including amphibians.

Archaeopteryx is an extinct bird-like dinosaur considered a transitional fossil between non-avian feathered dinosaurs and modern birds. Salamanders are amphibians themselves, not the ancestors of the first amphibians. Coelacanths are another group of lobe-finned fishes, but the specific lineage that led to amphibians is considered to be the extinct group of lobe-finned fishes more closely related to tetrapods. "Lobe fins" refers to the characteristic fins of these ancestral fish.

#### Quick Tip

**Quick Tip:** Focus on the evolutionary transition from aquatic to terrestrial life. Lobe-finned fishes had adaptations in their fins that allowed them to move in shallow water and potentially on land for short periods, leading to the evolution of limbs in amphibians.

---

**11. The cloning site present in the *rop* site of *E. coli* cloning vector pBR322 is:**

- (A) ( Pvu II )
- (B) ( Pst I )
- (C) ( EcoR I )
- (D) ( BamH I )

**Correct Answer:** (A) ( Pvu II )

**Solution:** The plasmid pBR322 is a widely used *E. coli* cloning vector. It contains several restriction enzyme recognition sites that can be used for inserting foreign DNA. The *rop* gene in pBR322 codes for proteins involved in the replication of the plasmid.

The restriction enzyme *Pvu II* has a unique recognition site within the *rop* gene of pBR322. Insertion of foreign DNA at this site would disrupt the *rop* gene function, potentially affecting the plasmid copy number. The other restriction enzymes listed (*Pst I*, *EcoR I*, *BamH I*) have cloning sites in different regions of the pBR322 plasmid, primarily within the antibiotic resistance genes (ampicillin resistance or tetracycline resistance) or outside the *rop* gene.

Therefore, the cloning site present in the *rop* site of *E. coli* cloning vector pBR322 is for *Pvu II*.

#### Quick Tip

**Quick Tip:** When studying cloning vectors like pBR322, it's helpful to know the locations of important genes (like antibiotic resistance genes and *rop*) and the unique restriction sites within them. Restriction maps of plasmids are useful for this purpose.

**12. Bacteria growing anaerobically on cellulosic material produce large amounts of which gases? Select the correct option.**

- (A) (  $\text{CH}_3$ ,  $\text{CO}_2$ ,  $\text{H}_2$  )
- (B) (  $\text{H}_2$ ,  $\text{NH}_3$ ,  $\text{CH}_4$  )
- (C) (  $\text{H}_2\text{O}$ ,  $\text{Cl}_2$ ,  $\text{H}_2\text{S}$  )
- (D) (  $\text{CO}_2$ ,  $\text{CH}_4$ ,  $\text{H}_2$  )

**Correct Answer:** (D) (  $\text{CO}_2$ ,  $\text{CH}_4$ ,  $\text{H}_2$  )

**Solution:** Anaerobic bacteria that decompose cellulosic material (like plant matter) in environments lacking oxygen carry out anaerobic digestion or fermentation. This process typically results in the production of several gases, including carbon dioxide ( $\text{CO}_2$ ), methane ( $\text{CH}_4$ ), and hydrogen ( $\text{H}_2$ ). These gases are the primary components of biogas produced from cellulose.

Option (A) includes

$\text{CH}_3$  (methyl radical), which is not a stable end product of this process. Option (B) includes  $\text{NH}_3$  (ammonia), containing compounds, not primarily from cellulose. Option (C) includes  $\text{H}_2\text{O}$  (water),  $\text{Cl}_2$  (chlorine gas),

#### Quick Tip

**Quick Tip:** Remember that anaerobic decomposition of organic matter, especially cellulose, leads to the production of biogas, whose main components are methane and carbon dioxide, along with smaller amounts of hydrogen.

---

**13. Assertion (A): In humans, filariasis is characterized by inflammation of the lower limbs. Reason (R): Filarial worm usually lives in the lymphatic vessels of the lower limbs.**

(A) (

Both Assertion (A) and Reason (R) are true and Reason (R) is the correct explanation of the Assertion (A)

(B) (

Both Assertion (A) and Reason (R) are true, but Reason (R) is not the correct explanation of the Assertion (A)

)

(C) ( Assertion (A) is true, but Reason (R) is false. )

(D) ( Assertion (A) is false, but Reason (R) is true. )

**Correct Answer:** (A) (

Both Assertion (A) and Reason (R) are true and Reason (R) is the correct explanation of the Assertion (A)

)

**Solution:** Filariasis, also known as elephantiasis, is a parasitic disease caused by filarial worms, such as *Wuchereria bancrofti*. These worms commonly reside in the lymphatic vessels, particularly those of the lower limbs. Their presence obstructs the flow of lymph, leading to the accumulation of fluid and severe swelling, a condition known as lymphedema. This chronic lymphedema results in the thickening and hardening of the skin and underlying tissues, causing the characteristic inflammation and gross enlargement of the lower limbs seen in filariasis. Therefore, the assertion that filariasis is characterized by inflammation of the lower limbs is true, and the reason that the filarial worm usually lives in the lymphatic vessels of the lower limbs correctly explains this symptom.

#### Quick Tip

**Quick Tip:** Remember that filariasis affects the lymphatic system, especially in the lower limbs, leading to their characteristic swelling due to the blockage caused by the parasitic worms residing there.

**14. Assertion (A): Isolated single cells can be fused to produce somatic hybrids. Reason (R): Cells selected for somatic hybridisation have desirable characters.**

(A) (

Both Assertion (A) and Reason (R) are true and Reason (R) is the correct explanation of the Assertion (A) )

(B) (

Both Assertion (A) and Reason (R) are true, but Reason (R) is not the correct explanation of the Assertion (A) )

(C) ( Assertion (A) is true, but Reason (R) is false. )

(D) ( Assertion (A) is false, but Reason (R) is true. )

**Correct Answer:** (B) (

Both Assertion (A) and Reason (R) are true, but Reason (R) is not the correct explanation of the Assertion (A) )

**Solution:** Assertion (A) is true. Somatic hybridization is a process in which protoplasts of isolated somatic cells from two different plant varieties or species are fused together to obtain a hybrid protoplast, which can then be cultured to regenerate a somatic hybrid plant. Reason (R) is also true. In somatic hybridization experiments, cells with desirable characters (such as disease resistance, herbicide tolerance, etc.) are often selected as the parental cells for fusion. The aim is to combine these desirable traits in the somatic hybrid. However, Reason (R) is not the correct explanation of Assertion (A). The fact that isolated single cells with desirable characters are chosen for fusion does not directly explain the process of fusing these cells to produce somatic hybrids. The fusion process itself is facilitated by fusogens like PEG or electrofusion, and the selection of cells with desirable characters is a separate step in the overall somatic hybridization technique.

### Quick Tip

**Quick Tip:** Understand that somatic hybridization involves the fusion of protoplasts, and the selection of parental cells with specific traits is a strategic step to obtain hybrids with combined desirable characteristics. The reason for performing somatic hybridization is to combine traits, but the process of fusion is independent of why specific cells are chosen.

---

**15. Assertion (A): In dihybrid crosses involving sex-linked genes in *Drosophila*, generation of non-parental gene combinations are observed. Reason (R): Two genes present on different chromosomes show linkage and recombination in *Drosophila*.**

(A) (

Both Assertion (A) and Reason (R) are true and Reason (R) is the correct explanation of the Assertion (A) )

(B) (

Both Assertion (A) and Reason (R) are true, but Reason (R) is not the correct explanation of the Assertion (A) )

(C) ( Assertion (A) is true, but Reason (R) is false. )

(D) ( Assertion (A) is false, but Reason (R) is true. )

**Correct Answer:** (C) ( Assertion (A) is true, but Reason (R) is false. )

**Solution:** Assertion (A) is true. In dihybrid crosses involving sex-linked genes in *Drosophila*, non-parental gene combinations (recombinant types) are indeed observed in the offspring. This is due to crossing over (recombination) that occurs during meiosis in the heterozygous female.

Reason (R) is false. Two genes present on **different** chromosomes assort independently and do not show linkage. Linkage refers to the physical association of genes on the same chromosome. Genes on different chromosomes undergo independent assortment, leading to new combinations of traits. Recombination also occurs between genes located on the same

chromosome due to crossing over. Therefore, the statement that genes on different chromosomes show linkage is incorrect.

#### Quick Tip

**Quick Tip:** Remember the concepts of linkage and independent assortment. Linked genes are on the same chromosome and tend to be inherited together, while genes on different chromosomes assort independently. Recombination (crossing over) can produce non-parental combinations for linked genes.

---

**16. Assertion (A): In some species of asteraceae and grasses, seeds are formed without fertilization. Reason (R): Formation of fruit without fertilization is called parthenocarpy.**

(A) (

Both Assertion (A) and Reason (R) are true and Reason (R) is the correct explanation of the Assertion (A) )

(B) (

Both Assertion (A) and Reason (R) are true, but Reason (R) is not the correct explanation of the Assertion (A) )

(C) ( Assertion (A) is true, but Reason (R) is false. )

(D) ( Assertion (A) is false, but Reason (R) is true. )

**Correct Answer:** (B) (

Both Assertion (A) and Reason (R) are true, but Reason (R) is not the correct explanation of the Assertion (A) )

**Solution:** Assertion (A) is true. In some species of the Asteraceae family (e.g., dandelions) and grasses, a form of asexual reproduction called apomixis can occur, where seeds are produced without fertilization. This results in offspring that are genetically identical to the mother plant.

Reason (R) is also true. Parthenocarpy is the formation of fruit without fertilization. This process results in seedless fruits, such as in bananas and some varieties of grapes.

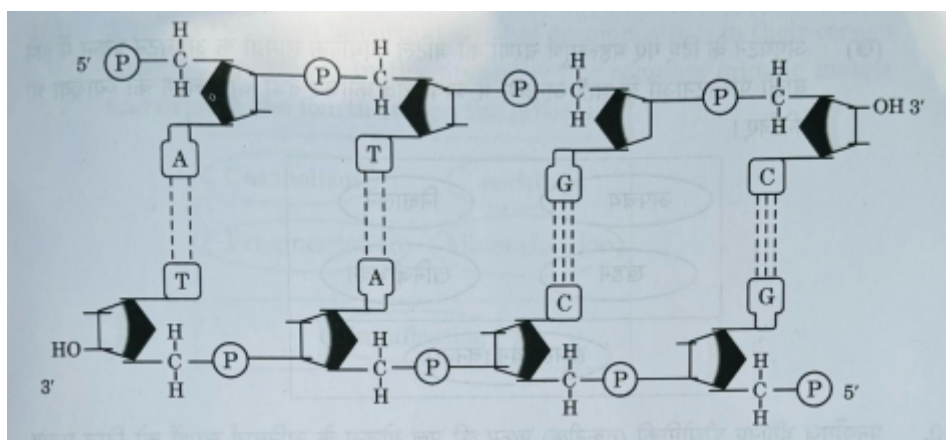
However, Reason (R) is not the correct explanation of Assertion (A). Assertion (A) describes apomixis, which is the formation of seeds without fertilization. Reason (R) describes parthenocarpy, which is the formation of fruits without fertilization. While both are forms of reproduction that bypass fertilization, they are distinct processes concerning different plant structures (seeds vs. fruits).

### Quick Tip

**Quick Tip:** Distinguish between apomixis (seed formation without fertilization) and parthenocarpy (fruit formation without fertilization). They are both forms of asexual reproduction but involve different outcomes.

## Section - B

17. Study the given molecular structure of a double-stranded polynucleotide chain of DNA and answer the questions that follow.



(a) How many phosphodiester bonds are present in the given double-stranded polynucleotide chain?

**Solution (a):** A phosphodiester bond links the 3' carbon atom of one sugar molecule to the 5' carbon atom of the next sugar molecule in a DNA or RNA chain. In the given diagram, let's count the phosphodiester bonds in each strand:

Top strand (5' to 3'): There are 4 nucleotides, so there are  $(4 - 1 = 3)$  phosphodiester bonds linking them. Bottom strand (3' to 5'): Similarly, there are 4 nucleotides, so there are  $(4 - 1 =$

3) phosphodiester bonds linking them. Therefore, the total number of phosphodiester bonds in the given double-stranded polynucleotide chain is  $(3 + 3 = 6)$ .

**Correct Answer (a):** 6 phosphodiester bonds.

**(b) How many base pairs are there in each helical turn of the double helix structure of DNA? Also write the distance between a base pair in a helix.**

**Solution (b):** In the typical B-DNA structure (the most common form), there are approximately 10 base pairs per helical turn. The distance between two consecutive base pairs in a DNA helix is 0.34 nanometers (nm) or 3.4 Angstroms ( $\text{\AA}$ ).

**Correct Answer (b):** Approximately 10 base pairs per helical turn. The distance between a base pair is 0.34 nm or 3.4 ( $\text{\AA}$ ).

**(c) In addition to H-bonds, what confers additional stability to the helical structure of DNA?**

**Solution (c):** In addition to hydrogen bonds that form between the nitrogenous bases of opposite strands (A with T, and G with C), the helical structure of DNA is further stabilized by **phosphodiester bonds** and **hydrophobic interactions**.

**Phosphodiester bonds:** These strong covalent bonds link the nucleotides within each strand, forming the sugar-phosphate backbone, which provides structural integrity to the helix.

**Hydrophobic interactions:** The nitrogenous bases are relatively nonpolar and tend to stack on top of each other in the interior of the DNA double helix, away from the surrounding polar water molecules. These stacking interactions, also known as van der Waals forces and hydrophobic forces, contribute significantly to the stability of the DNA structure.

**Correct Answer (c):** Phosphodiester bonds and hydrophobic interactions (base stacking) confer additional stability to the helical structure of DNA.

### Quick Tip

Include a relevant concept, shortcut, or useful trick related to solving this type of problem. Give useful quick tips for the question. Also properly format the text in quick tip as per latex. **Quick Tip:** Remember the key structural features of DNA: the sugar-phosphate backbone linked by phosphodiester bonds, the base pairing through hydrogen bonds (A-T with 2 H-bonds, G-C with 3 H-bonds), the antiparallel nature of the strands, and the base stacking interactions contributing to stability. Also, recall the approximate dimensions of a DNA helix (base pairs per turn and distance between base pairs).

---

**18. (a) Why are restrictions imposed on MTP in India? Up to how many weeks or trimesters, is MTP considered relatively safe for a female, if necessary to perform, by a medical practitioner?**

**Solution (a):** Restrictions are imposed on Medical Termination of Pregnancy (MTP) in India to balance a woman's reproductive rights with concerns for the life of the fetus and maternal health. The Medical Termination of Pregnancy Act of 1971 (amended in 2021) outlines the conditions under which a pregnancy can be legally terminated. These restrictions are in place to:

**Prevent misuse:** To avoid MTP for unwanted pregnancies without valid reasons, ensuring it is sought for genuine health or socio-economic considerations. **Ensure safety of the**

**woman:** To regulate the procedure and ensure it is performed by trained medical practitioners in safe and hygienic conditions, minimizing risks to the woman's health.

**Consider the viability of the fetus:** As the pregnancy progresses, the fetus becomes more developed, and there are increasing ethical considerations regarding its termination.

According to the Medical Termination of Pregnancy (Amendment) Act, 2021, the gestational limits for MTP are as follows:

Up to 20 weeks: Termination is allowed on the opinion of one registered medical practitioner. Between 20 and 24 weeks: Termination is allowed on the opinion of two registered medical practitioners under specific conditions. MTP is generally considered relatively safe during the **first trimester (up to 12 weeks)**. As the pregnancy advances into

the second trimester (13-24 weeks), the risks associated with the procedure increase.

**Correct Answer (a):** Restrictions on MTP in India are for preventing misuse, ensuring safety, and considering fetal viability. MTP is relatively safe up to the first trimester (around 12 weeks).

**OR**

**18. (b) Expand PID. Name any two common viral infections transmitted through sexual contact in human females.**

**Solution (b):** PID stands for **Pelvic Inflammatory Disease**.

Two common viral infections transmitted through sexual contact in human females are:

**Human Papillomavirus (HPV) infection:** Certain types can cause genital warts and cervical cancer. **Herpes Simplex Virus (HSV) infection:** Causes genital herpes with painful sores.

**Correct Answer (b):** PID stands for Pelvic Inflammatory Disease. Two common viral infections transmitted through sexual contact in human females are Human Papillomavirus (HPV) infection and Herpes Simplex Virus (HSV) infection.

#### Quick Tip

Include a relevant concept, shortcut, or useful trick related to solving this type of problem. Give useful quick tips for the question. Also properly format the text in quick tip as per latex. **Quick Tip:** Understand the reasons behind MTP regulations and the safest period for the procedure. Also, be familiar with common STIs, especially viral ones like HPV and HSV, and their implications for female reproductive health.

---

**19. (a) How is the interaction between *Ophrys* and its specific bee pollinator one of the best examples of co-evolution? Explain.**

**Solution (a):** The interaction between the orchid genus *Ophrys* and its specific bee pollinator is a remarkable example of co-evolution because the orchid has evolved to exhibit

remarkable floral mimicry of the female bee in terms of its appearance, scent, and touch. This mimicry deceives the male bee into attempting to mate with the flower (pseudocopulation). During this process, the pollinia (pollen sacs) of the *Ophrys* flower get attached to the bee's body. When the same bee visits another *Ophrys* flower, it transfers the pollinia, thus achieving pollination.

This close relationship has driven the co-evolution of both the orchid and the bee in the following ways:

**Floral mimicry:** Over evolutionary time, *Ophrys* flowers have developed intricate shapes, colors, and textures that closely resemble the female bee of a specific species. This visual mimicry attracts the male bee. **Scent mimicry:** The orchid flowers also emit volatile chemicals (pheromones) that mimic the sex pheromones of the female bee, further enticing the male bee. **Timing of flowering:** *Ophrys* species often flower at a time when the specific female bee emerges, maximizing the chances of pollination by the corresponding male bee. **Bee behavior:** The male bee's mating behavior and preferences have, in turn, influenced the selection pressures on the orchid's floral traits. Only those orchids that most effectively mimic the female bee are successfully pollinated, passing on their genes. This intricate, species-specific mimicry highlights a tight co-evolutionary relationship where the reproductive success of the orchid is entirely dependent on the deception of a single bee species, and the bee's behavior exerts strong selective pressure on the orchid's floral characteristics. The high degree of specialization makes this interaction a classic illustration of co-evolution.

**Correct Answer (a):** The interaction demonstrates co-evolution through the orchid's floral mimicry (appearance, scent, touch) of the specific female bee, leading to pseudocopulation and pollination. This has resulted in reciprocal evolutionary changes in both the orchid and the bee.

**OR**

**19. (b) Arrange the given important steps of decomposition in their correct order of occurrence in the breakdown of complex organic matter and explain the fourth step in the process.**

Catabolism Leaching Fragmentation Mineralisation Humification

**Solution (b):** The correct order of occurrence of the important steps of decomposition of complex organic matter is:

Fragmentation: Detritivores (e.g., earthworms) break down detritus into smaller particles.

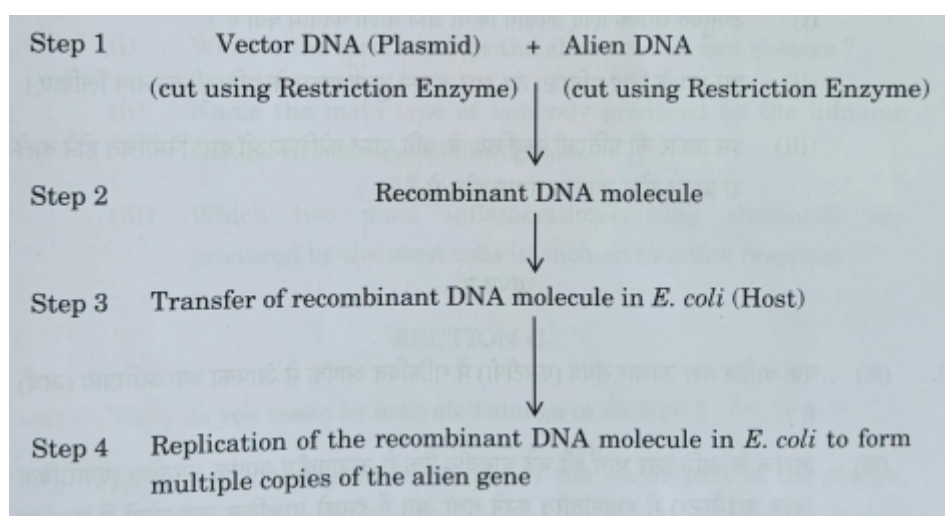
Leaching: Water-soluble inorganic nutrients seep down into the soil horizon and get precipitated as unavailable salts. Catabolism: Microbial enzymes degrade the simpler soluble compounds into even simpler inorganic substances. Humification: This is the process of formation of humus. Humus is a dark-colored amorphous substance that is highly resistant to microbial action and undergoes decomposition at an extremely slow rate. It is colloidal in nature and serves as a reservoir of nutrients. Mineralisation: The further degradation of humus by some microbes releases inorganic nutrients (minerals) back into the soil. The fourth step in the process is Humification. During humification, the partially decomposed organic matter is transformed into a stable, dark-colored amorphous substance called humus. Humus is rich in lignin and cellulose derivatives and is highly resistant to microbial action, decomposing very slowly. It is colloidal in nature, meaning it has a large surface area for nutrient retention, and it plays a crucial role in soil fertility by acting as a reservoir of essential nutrients like nitrogen, phosphorus, and potassium. Humus also improves soil structure, aeration, and water-holding capacity.

**Correct Answer (b):** The correct order is Fragmentation, Leaching, Catabolism, Humification, Mineralisation. The fourth step, Humification, is the formation of humus, a dark, stable, nutrient-rich substance resistant to rapid decomposition, contributing significantly to soil fertility.

### Quick Tip

Include a relevant concept, shortcut, or useful trick related to solving this type of problem. Give useful quick tips for the question. Also properly format the text in quick tip as per latex. **Quick Tip (a):** Co-evolution often involves intricate adaptations between two species where each influences the other's evolutionary trajectory. The *Ophrys*-bee interaction is a prime example of mimicry driving this process. **Quick Tip (b):** Remember the sequence of decomposition by associating each step with the agents or processes involved: detritivores for fragmentation, water for leaching, microbes and enzymes for catabolism, a slow transformation into humus, and further microbial action for releasing minerals.

**20. The basic scheme of the essential steps involved in the process of recombinant DNA technology is summarised below in the form of a flow diagram. Study the given flow diagram and answer the questions that follow.**



**(a) What is the technical term used for Step 4 in the above process?**

**Solution (a):** Step 4 describes the "Replication of the recombinant DNA molecule in *E. coli* to form multiple copies of the alien gene." The technical term used for making multiple copies of a gene of interest within a host cell using recombinant DNA technology is gene cloning or DNA cloning. In this context, since the recombinant DNA molecule containing

the alien gene is replicated to produce numerous copies of the alien gene, Step 4 represents the cloning or amplification of the alien gene.

**Correct Answer (a):** Gene cloning or DNA cloning (or gene amplification).

#### Quick Tip

Include a relevant concept, shortcut, or useful trick related to solving this type of problem. Give useful quick tips for the question. Also properly format the text in quick tip as per latex. **Quick Tip (a):** Remember that the core idea of gene cloning is to make numerous identical copies of a specific DNA fragment. This amplification step is crucial for further analysis or use of the gene.

---

**20. (b) Which of the given two combinations of restriction enzyme should be used in Step 1? Justify your answer.**

1. EcoR I to cut the plasmid and Hind III to cut the alien DNA.
2. EcoR I to cut both the plasmid and alien DNA.

**Solution (b):** The second combination, (ii) EcoR I to cut both the plasmid and alien DNA, is generally preferred for Step 1.

**Justification:**

For the alien DNA to be inserted into the vector DNA (plasmid) and form a recombinant DNA molecule, the ends of the cut alien DNA and the cut plasmid must be compatible so that they can be joined together by DNA ligase.

Combination (i) EcoR I to cut the plasmid and Hind III to cut the alien DNA: EcoR I and Hind III are different restriction enzymes and they recognize different DNA sequences.

Therefore, they will generate different complementary sticky ends (or blunt ends, depending on the enzyme). If the ends generated by EcoR I on the plasmid are not compatible with the ends generated by Hind III on the alien DNA, then the alien DNA cannot be ligated into the plasmid to form a stable recombinant DNA molecule. While it might be possible in some

cases to use different enzymes if they generate compatible ends, it is not a guaranteed or straightforward approach.

Combination (ii) EcoR I to cut both the plasmid and alien DNA: If the same restriction enzyme (EcoR I in this case) is used to cut both the plasmid and the alien DNA, it will generate compatible complementary sticky ends (or blunt ends) on both DNA fragments. These compatible ends can then anneal (pair up), and the phosphodiester bonds in the DNA backbone can be sealed by DNA ligase, resulting in the formation of a stable recombinant DNA molecule. This approach ensures that the alien DNA fragment can be inserted into the plasmid in a defined orientation (if sticky ends are generated) or at least ligated successfully (if blunt ends are generated by EcoR I at both ends).

Therefore, using the same restriction enzyme to cut both the vector DNA and the alien DNA is a common and reliable strategy in recombinant DNA technology to ensure proper ligation and formation of the recombinant DNA molecule.

**Correct Answer (b):** Combination (ii) is generally preferred because using the same restriction enzyme (EcoR I) to cut both the plasmid and alien DNA ensures that they will have compatible ends, facilitating the formation of a stable recombinant DNA molecule by DNA ligase.

#### Quick Tip

Include a relevant concept, shortcut, or useful trick related to solving this type of problem. Give useful quick tips for the question. Also properly format the text in quick tip as per latex. **Quick Tip (b):** For successful ligation in recombinant DNA technology, the ends of the DNA fragment to be inserted and the vector DNA must be compatible. Using the same restriction enzyme is the easiest way to ensure this compatibility. Sometimes, adaptors or linkers are used to make incompatible ends compatible, but using the same enzyme is the most direct method.

---

**21. (a) (i) Explain why the milk produced by the mother during the initial days of lactation is considered to be very essential for the newborn infant.**

**Solution (a) (i):** The milk produced by the mother during the initial days of lactation is called colostrum and is considered very essential for the newborn infant due to several crucial reasons:

**Rich in antibodies:** Colostrum is exceptionally rich in antibodies, particularly Immunoglobulin A (IgA). These antibodies provide passive immunity to the newborn, protecting it against various infections and diseases in the early stages of life when the infant's own immune system is not yet fully developed. IgA lines the mucous membranes of the infant's respiratory and digestive tracts, preventing the entry of pathogens.

**Nutrient-dense:** Colostrum is packed with essential nutrients in a highly digestible form, including proteins, vitamins (especially Vitamin A), and minerals that are vital for the newborn's growth and development.

**Low in fat and carbohydrates:** Compared to mature milk, colostrum has a lower content of fat and carbohydrates, making it easier for the newborn's immature digestive system to process.

**Contains growth factors:** Colostrum contains various growth factors that help in the development and maturation of the infant's gut and other organs.

**Laxative effect:** Colostrum has a mild laxative effect that helps in clearing the meconium (the first stool) from the infant's bowels. This is important for preventing jaundice as meconium contains bilirubin. Due to these unique properties, colostrum provides crucial immunological protection, essential nutrients, and growth factors that are critical for the health and survival of the newborn infant during its vulnerable initial days.

**Correct Answer (a) (i):** Colostrum is essential due to its richness in IgA antibodies providing passive immunity, high concentration of essential nutrients, growth factors aiding development, and its laxative effect helping clear meconium.

**(ii) What is the term used for the milk produced during the initial days of lactation?**

**Solution (a) (ii):** The term used for the milk produced during the initial days of lactation is colostrum.

**Correct Answer (a) (ii):** Colostrum.

**OR**

**21. (b) Many children in the metro cities are suffering from a very common exaggerated response of the immune system to certain weak antigens in the air.**

**(i) What is the term used for the above mentioned disease?**

**Solution (b) (i):** The term used for the above-mentioned disease, which is a common exaggerated response of the immune system to weak antigens in the air, is allergy or hypersensitivity. The weak antigens that trigger this response are called allergens.

**Correct Answer (b) (i):** Allergy (or Hypersensitivity).

**(ii) Name the main type of antibody produced by the immune system in response to this disease.**

**Solution (b) (ii):** The main type of antibody produced by the immune system in response to allergic reactions is Immunoglobulin E (IgE). When an allergen enters the body of a sensitized individual, it triggers the production of IgE antibodies specific to that allergen. These IgE antibodies bind to mast cells and basophils.

**Correct Answer (b) (ii):** Immunoglobulin E (IgE).

**(iii) Which two main inflammation-causing chemicals are produced by the mast cells in such an immune response?**

**Solution (b) (iii):** When IgE antibodies bound to mast cells encounter the specific allergen, the mast cells degranulate and release several inflammation-causing chemicals. Two main such chemicals are histamine and serotonin. These chemicals cause various symptoms associated with allergies, such as vasodilation, increased vascular permeability, smooth muscle contraction (e.g., in the bronchioles), and mucus secretion.

**Correct Answer (b) (iii):** Histamine and serotonin.

### Quick Tip

Include a relevant concept, shortcut, or useful trick related to solving this type of problem. Give useful quick tips for the question. Also properly format the text in quick tip as per latex. **Quick Tip (a):** Remember the unique composition and benefits of colostrum for newborns, especially the role of IgA in passive immunity. **Quick Tip (b):** When thinking about allergies, recall that IgE is the key antibody involved, and mast cells release inflammatory mediators like histamine and serotonin upon allergen exposure.

---

## Section - C

### 22. (a) What do you mean by activated sludge in an STP?

**Solution (a):** Activated sludge is a flocculent mass of microorganisms, primarily bacteria, along with fungi, protozoa, and other aerobic microbes, that develops in the aeration tank of a Sewage Treatment Plant (STP) during the biological treatment of wastewater. This sludge is called "activated" because the microbial community within it is highly active in consuming and oxidizing the organic pollutants present in the sewage.

The process involves aerating the wastewater in the presence of this microbial floc. The microorganisms utilize the organic matter as their food source, metabolizing it and converting it into microbial biomass (more sludge), carbon dioxide, and water. The flocs of activated sludge have a spongy structure that allows for efficient adsorption and degradation of organic pollutants. After the aeration tank, the activated sludge is allowed to settle in a settling tank (secondary clarifier). Most of this settled sludge is then recycled back into the aeration tank to serve as an inoculum, ensuring a continuous and efficient biological treatment process.

**Correct Answer (a):** Activated sludge is a flocculent mass of aerobic microorganisms in an STP's aeration tank that actively consumes and oxidizes organic pollutants in wastewater.

**(b) Explain the biological treatment of the major part of the sludge transferred from the large aeration tank into the anaerobic sludge digesters before its final release into the natural water bodies.**

**Solution (b):** A significant portion of the activated sludge that settles in the secondary settling tank is not recycled back to the aeration tank. This excess sludge is transferred into large anaerobic sludge digesters for further biological treatment. The biological treatment in the anaerobic sludge digesters involves the breakdown of the organic matter in the sludge by anaerobic microorganisms under oxygen-free conditions. This process has several important outcomes:

**Decomposition of complex organics:** Anaerobic bacteria, including acidogens and methanogens, work synergistically to decompose the complex organic compounds in the sludge (like proteins, carbohydrates, and lipids) into simpler substances. Acidogens first convert these complex organics into organic acids, hydrogen sulfide, ammonia, and carbon dioxide. **Production of biogas:** Methanogenic bacteria then utilize these intermediate products, particularly organic acids, hydrogen, and carbon dioxide, to produce biogas, which is primarily a mixture of methane ( $\text{CH}_4$ ) and carbon dioxide ( $\text{CO}_2$ ). Biogas is a valuable energy source that can be used to generate electricity or heat for the STP. **Reduction in sludge volume:** Anaerobic digestion significantly reduces the volume and mass of the sludge, making its final disposal more manageable. **Stabilization of sludge:** The process stabilizes the sludge by reducing the amount of putrescible organic matter, thereby decreasing its odor and the potential for environmental pollution. **Production of nutrient-rich digestate:** The remaining digested sludge (digestate) is relatively stable and rich in nutrients like nitrogen and phosphorus. After proper treatment, it can be used as a soil conditioner or fertilizer in agriculture. The biologically treated sludge (digestate) is then further processed (e.g., dewatered and dried) before its safe disposal or use, ensuring that the final release into natural water bodies does not cause pollution. The anaerobic digestion of sludge is a crucial step in wastewater treatment as it not only reduces the volume of waste but also recovers energy in the form of biogas and produces a more environmentally benign end product.

**Correct Answer (b):** In anaerobic sludge digesters, anaerobic bacteria decompose the organic matter in the sludge, producing biogas (mainly methane and  $\text{CO}_2$ ), reducing sludge volume, stabilizing it, and yielding nutrient-rich digestate suitable for disposal or use as fertilizer.

### Quick Tip

Include a relevant concept, shortcut, or useful trick related to solving this type of problem. Give useful quick tips for the question. Also properly format the text in quick tip as per latex. **Quick Tip (a):** Think of activated sludge as a concentrated community of beneficial microbes that are the workhorses of secondary wastewater treatment, responsible for breaking down organic pollutants. **Quick Tip (b):** Understand that anaerobic digestion of sludge is a multi-stage process involving different groups of bacteria that ultimately convert organic waste into biogas and a more stable, smaller volume of sludge. This process is crucial for both waste reduction and energy recovery in STPs.

**23. Flowering plants with hermaphrodite flowers have developed many reproductive strategies to ensure cross-pollination. Study the given outbreeding devices adopted by certain flowering plants and answer the questions that follow.**

Stigma \ Pollen grains	Pollen grains of Plant A	Pollen grains of Plant B	Pollen grains of Plant C
Stigma of Plant A	×	✓	✓
Stigma of Plant B	✓	×	✓
Stigma of Plant C	✓	✓	×

**Note:**

All plants belong to the same species. × - No pollen tube growth/inhibition of pollen germination on stigma. ✓ - Pollen germination on stigma.

**(a) Name and define the outbreeding device described in the above table.**

**Solution (a):** The outbreeding device described in the above table is self-incompatibility. Self-incompatibility is a genetic mechanism in flowering plants that prevents self-pollination (the transfer of pollen from the anther of a flower to the stigma of the same flower or another flower on the same plant) and thus promotes cross-pollination. This is achieved by the inhibition of pollen germination or pollen tube growth on the stigma of the same plant. The

genetic basis of self-incompatibility involves specific genes with multiple alleles; a pollen grain will only germinate and grow a pollen tube on a stigma if its S-alleles are different from those of the stigma.

In the given table, the '×' indicates that when pollen grains from Plant A land on the stigma of Plant A, from Plant B on the stigma of Plant B, and from Plant C on the stigma of Plant C, there is no pollen tube growth or pollen germination. This demonstrates that each plant is incompatible with its own pollen, thus preventing self-pollination. The '' indicates that cross-pollination between different plants (e.g., pollen of Plant A on stigma of Plant B or C) is successful.

**Correct Answer (a):** The outbreeding device is self-incompatibility, a genetic mechanism that prevents self-pollination by inhibiting pollen germination or pollen tube growth on the stigma of the same plant.

**(b) Explain what would have been the disadvantage to the plant in the absence of the given strategy.**

**Solution (b):** In the absence of self-incompatibility, these plants would be self-pollinated. Self-pollination, especially in the long term, can lead to several disadvantages for the plant: Inbreeding depression: Continuous self-pollination results in inbreeding, which increases homozygosity. This can lead to the expression of harmful recessive alleles, reducing the genetic fitness of the offspring. Traits like reduced vigor, lower yield, decreased disease resistance, and developmental abnormalities can become more prevalent in subsequent generations. Reduced genetic diversity: Self-pollination limits genetic recombination and the introduction of new genetic variations within the population. This lack of diversity makes the plant population less adaptable to changes in the environment, such as new diseases, pests, or climatic conditions. Slower evolution: The reduced genetic variation in self-pollinating populations hinders the process of natural selection and evolutionary adaptation to new challenges. Cross-pollination, on the other hand, introduces new gene combinations, providing the raw material for evolution. Accumulation of deleterious mutations: Selfing allows deleterious recessive mutations to become homozygous and expressed, as there is no outcrossing to mask these harmful genes with dominant beneficial alleles from a different

parent. Therefore, self-incompatibility is an important strategy that promotes cross-pollination, leading to increased genetic diversity, avoidance of inbreeding depression, enhanced adaptability, and potentially faster evolutionary rates, all of which contribute to the long-term survival and success of the plant species.

**Correct Answer (b):** The absence of self-incompatibility would lead to self-pollination, resulting in inbreeding depression (reduced fitness due to increased homozygosity of harmful recessive alleles), reduced genetic diversity, slower evolutionary adaptation, and the accumulation of deleterious mutations.

#### Quick Tip

Include a relevant concept, shortcut, or useful trick related to solving this type of problem. Give useful quick tips for the question. Also properly format the text in quick tip as per latex. **Quick Tip (a):** Recognize that the 'x' in the diagonal of the table is the key indicator of self-incompatibility, where a plant's pollen cannot successfully fertilize its own stigma. **Quick Tip (b):** Remember the general consequences of inbreeding (increased homozygosity, expression of recessive traits, reduced vigor) and the benefits of outbreeding (increased genetic diversity, adaptability) when considering the advantages of mechanisms that prevent self-pollination.

---

**24. (a) Alien species are highly invasive and are a threat to indigenous species.**

**Substantiate this statement with the help of any two examples.**

**Solution (a):** Alien species, also known as exotic or non-native species, are those that are introduced to a habitat outside their native range. Many alien species become invasive when they establish themselves and spread rapidly, causing harm to the native biodiversity and ecosystems. Their invasiveness often stems from a lack of natural predators, competitors, or diseases in the new environment. Here are two examples to substantiate this statement:  
**Water Hyacinth (*Eichhornia crassipes*):** Native to South America, water hyacinth was introduced to many parts of the world as an ornamental plant. In India, it has become a

notorious invasive species in freshwater bodies. Its rapid vegetative propagation leads to the formation of dense mats on the water surface. These mats:

Block sunlight, reducing photosynthesis by submerged plants and algae, leading to oxygen depletion (eutrophication) when they decompose. Impede water flow, affecting navigation and irrigation. Alter water chemistry and temperature, negatively impacting aquatic life, including native fish and invertebrates. Provide breeding grounds for disease vectors like mosquitoes. The unchecked growth of water hyacinth outcompetes native aquatic vegetation, leading to a loss of biodiversity and disruption of the natural ecosystem. *Lantana (Lantana camara)*: Originating from tropical America, Lantana was introduced to India and many other regions as an ornamental shrub. It has become a highly invasive weed in a variety of habitats, including forests, grasslands, and agricultural lands. Its dense thickets:

Outcompete native plant species for sunlight, water, and nutrients, suppressing their growth and reproduction. Reduce biodiversity by forming monocultures and altering habitat structure, affecting native herbivores and other wildlife that depend on the indigenous flora. Can be toxic to livestock. Alter fire regimes in some ecosystems. Lantana's ability to spread aggressively through vegetative reproduction and seed dispersal has made it a significant threat to native plant communities and ecosystem functioning in many parts of the world. These examples illustrate how alien species, when they become invasive, can outcompete, displace, and otherwise harm indigenous species, leading to a loss of biodiversity and ecosystem degradation.

**Correct Answer (a):** Alien species like Water Hyacinth in Indian water bodies and Lantana in various habitats are highly invasive. Water Hyacinth blocks sunlight, depletes oxygen, and outcompetes native aquatic life. Lantana forms dense thickets, outcompetes native plants, reduces biodiversity, and can be toxic to livestock, demonstrating their threat to indigenous species and ecosystems.

**(b) State any two criteria for determining biodiversity hotspots.**

**Solution (b):** Biodiversity hotspots are regions with exceptionally high levels of endemic species (species found nowhere else) that are also facing high levels of habitat loss. Two main criteria used to determine if a region qualifies as a biodiversity hotspot are:

Endemism: The region must support a high number of endemic species, specifically, it should contain at least 1,500 species of vascular plants as endemics (i.e., 0.5

Degree of Threat: The region must have lost at least 70

These two criteria together identify regions that are not only rich in unique biodiversity but also highly vulnerable and in need of immediate conservation action.

**Correct Answer (b):** Two criteria for determining biodiversity hotspots are: (1) High endemism: the region must contain at least 1,500 endemic vascular plant species. (2) High degree of threat: the region must have lost at least 70

#### Quick Tip

Include a relevant concept, shortcut, or useful trick related to solving this type of problem. Give useful quick tips for the question. Also properly format the text in quick tip as per latex. **Quick Tip (a):** When citing examples of invasive alien species, try to include details about their origin, how they were introduced, and the specific ways they harm native ecosystems and biodiversity. **Quick Tip (b):** Remember the two key characteristics of a biodiversity hotspot: it must be rich in unique species (endemism) and under significant threat of habitat loss. The specific thresholds (1,500 endemic plant species and 70

---

**25. Answer the following questions with respect to the sex determination mechanism in birds:**

**(a) Name the type of heterogamety observed in most birds.**

**Solution (a):** The type of heterogamety observed in most birds is female heterogamety. In this system, females have two different sex chromosomes, designated as ZW, while males have two identical sex chromosomes, designated as ZZ. This is in contrast to the male heterogamety (XY system) found in humans and many other animals.

**Correct Answer (a):** Female heterogamety (ZW system).

**(b) If the birds have 18 pairs of autosomal chromosomes and a pair of sex chromosomes, fill in the blanks (i), (ii), (iii) and (iv) in the table given below. (Use symbols Z and W for sex chromosomes).**

	Total number of autosomes (in a diploid cell)	Type of sex chromosomes (in a diploid cell)
Male bird	(i) _____	(ii) _____
Female bird	(iii) _____	(iv) _____

**Solution (b):** Given that birds have 18 pairs of autosomal chromosomes, the total number of autosomes in a diploid cell is  $(18 \times 2 = 36)$ . *Birds also have one pair of sex chromosomes.*

Male bird: In birds, males are homogametic, meaning they have two identical sex chromosomes (ZZ). Therefore:

(i) Total number of autosomes in a diploid male bird cell = 36 (ii) Type of sex chromosomes in a diploid male bird cell = ZZ Female bird: In birds, females are heterogametic, meaning they have two different sex chromosomes (ZW). Therefore:

(iii) Total number of autosomes in a diploid female bird cell = 36 (the number of autosomes is the same in both males and females) (iv) Type of sex chromosomes in a diploid female bird cell = ZW

**Correct Answer (b):** (i) 36 (ii) ZZ (iii) 36 (iv) ZW

### Quick Tip

Include a relevant concept, shortcut, or useful trick related to solving this type of problem. Give useful quick tips for the question. Also properly format the text in quick tip as per latex. **Quick Tip (a):** Remember that in birds, it's the female that determines the sex of the offspring due to her heterogametic (ZW) nature, unlike in mammals where the male (XY) determines the sex. **Quick Tip (b):** Understand the terms homogametic (producing gametes with the same sex chromosome) and heterogametic (producing gametes with different sex chromosomes). In birds, males are homogametic (ZZ) and females are heterogametic (ZW). The number of autosomes remains constant in both sexes of a species.

---

## 26. Explain how the addition of lactose in the medium regulates the switching on of the *lac* operon in bacteria.

**Solution:** The *lac* operon in *E. coli* is a classic example of gene regulation in bacteria. It controls the expression of genes that code for enzymes involved in the metabolism of lactose. The regulation of the *lac* operon depends on the presence or absence of lactose (specifically, its isomer allolactose).

In the absence of lactose:

The repressor protein, encoded by the *i* gene (regulatory gene), is synthesized in its active form. This active repressor protein binds to the operator region of the *lac* operon. The binding of the repressor to the operator physically blocks the RNA polymerase from binding to the promoter and transcribing the structural genes (*lacZ*, *lacY*, *lacA*) of the operon. As a result, the expression of the *lac* operon is switched off, and the enzymes for lactose metabolism are not produced. In the presence of lactose:

When lactose is added to the growth medium, it is transported into the bacterial cell. Inside the cell, lactose is converted into its isomer allolactose by a small amount of  $\beta$ -galactosidase (the enzyme encoded by *lacZ* is present at very low basal levels). Allolactose acts as an inducer. It binds to the repressor protein. The binding of allolactose to the repressor induces a conformational change in the repressor protein, causing it to become inactive. The inactive

repressor loses its ability to bind to the operator region of the *lac* operon. With the repressor detached from the operator, RNA polymerase can now bind to the promoter and transcribe the structural genes (*lacZ*, *lacY*, *lacA*). These genes are then translated into the corresponding enzymes: ( $\beta$ ) –

*galactosidase*(breaks down lactose into glucose and galactose), *lactose permease*(facilitates the transport of lactose)

**Correct Answer:** Lactose addition leads to the production of allolactose, which binds to the repressor protein, making it inactive and detaching it from the *lac* operon's operator region. This allows RNA polymerase to transcribe the structural genes, switching on the operon and enabling lactose metabolism.

#### Quick Tip

Include a relevant concept, shortcut, or useful trick related to solving this type of problem. Give useful quick tips for the question. Also properly format the text in quick tip as per latex. **Quick Tip:** Remember the key players in the *lac* operon: the repressor (active when lactose is absent, inactive when present), the operator (binding site for the repressor), the promoter (binding site for RNA polymerase), and the inducer (allolactose, derived from lactose). The operon is 'off' when the repressor is bound and 'on' when it's not.

---

**27. 27. (a) Name and explain the role of inner and middle walls of the human female uterus.**

**Solution (a):** The wall of the human female uterus has three layers: the endometrium (inner wall), the myometrium (middle wall), and the perimetrium (outer wall). The question asks for the role of the inner and middle walls:

Endometrium (Inner Wall):

The endometrium is the innermost, glandular layer lining the uterine cavity. It is highly vascular and undergoes cyclical changes during the menstrual cycle under the influence of ovarian hormones (estrogen and progesterone). Role in menstruation: If fertilization does not occur, the functional layer of the endometrium (stratum functionalis) is shed during

menstruation, resulting in bleeding. Role in implantation: If fertilization occurs, the blastocyst implants into the endometrium, establishing a connection with the maternal blood supply and initiating pregnancy. The endometrium provides nourishment and support to the developing embryo. Role in placenta formation: The endometrium contributes to the formation of the placenta, which is essential for the exchange of nutrients, gases, and waste between the mother and the fetus throughout pregnancy. Myometrium (Middle Wall): The myometrium is the thick, middle layer of the uterine wall, composed primarily of smooth muscle tissue. It is highly elastic and capable of significant expansion during pregnancy. Role in uterine contractions: The myometrium plays a crucial role in uterine contractions during labor and childbirth, helping to expel the fetus. These contractions are stimulated by hormones like oxytocin. Role in preventing excessive bleeding: After childbirth, the myometrium contracts to compress blood vessels, helping to prevent excessive postpartum hemorrhage. Role in sperm transport: Uterine contractions can also play a minor role in the transport of sperm towards the fallopian tubes after intercourse.

**Correct Answer (a):** The endometrium (inner wall) is involved in menstruation, implantation, and placenta formation. The myometrium (middle wall) is responsible for uterine contractions during labor and helps prevent postpartum bleeding.

**(b) Write the location and function of fimbriae in human female.**

**Solution (b):**

**Location:** Fimbriae are finger-like projections located at the distal end (closest to the ovary) of the fallopian tubes (also known as oviducts). They surround the opening of the fallopian tube, which is situated near the ovary but not directly attached to it.

**Function:** The primary function of the fimbriae is to catch the ovulated ovum (egg) when it is released from the ovary during ovulation. At the time of ovulation, the fimbriae become more active and sweep over the surface of the ovary. The cilia (hair-like structures) on the surface of the fimbriae create currents in the peritoneal fluid that help to draw the released ovum into the infundibulum (the funnel-shaped opening) of the fallopian tube. Once inside the fallopian tube, the ovum can be fertilized by sperm. The fimbriae ensure that the ovum does not get lost in the abdominal cavity and is successfully transported into the female reproductive tract for potential fertilization.

**Correct Answer (b):** Fimbriae are finger-like projections at the open end of the fallopian tubes near the ovary. Their function is to catch the ovulated ovum and guide it into the fallopian tube.

#### Quick Tip

Include a relevant concept, shortcut, or useful trick related to solving this type of problem. Give useful quick tips for the question. Also properly format the text in quick tip as per latex. **Quick Tip (a):** Remember the three layers of the uterus (endometrium, myometrium, perimetrium) from inner to outer. Focus on the dynamic roles of the endometrium during the menstrual cycle and pregnancy, and the muscular function of the myometrium in contractions. **Quick Tip (b):** Visualize the fimbriae as gently sweeping the ovary at the time of ovulation to ensure the released egg enters the fallopian tube, the site of fertilization.

---

**28. Explain the beneficial role of the following, produced as a result of the processes of biotechnology, to mankind:**

**(a) Cow named Rosie**

**Solution (a):** The cow named Rosie was the first transgenic cow to produce human protein-enriched milk. This was achieved through genetic engineering, where the gene encoding the human alpha-lactalbumin protein was introduced into Rosie's genome. As a result, Rosie's milk contained the human alpha-lactalbumin protein at a concentration of about 2.4 grams per liter.

The beneficial role of Rosie's milk to mankind is significant, particularly for human infants. Human milk is nutritionally superior to natural cow milk for human babies, and alpha-lactalbumin is a major protein in human milk. Milk enriched with human alpha-lactalbumin is more nutritionally balanced for human infants and is closer in composition to natural human breast milk. This can lead to:

Improved nutritional value: Providing essential amino acids and a more balanced protein profile for infant growth and development. Enhanced digestibility: Making the milk easier

for infants to digest compared to regular cow milk. Potential health benefits:

Alpha-lactalbumin has also been shown to have some prebiotic properties and may play a role in infant gut health. Rosie's creation demonstrated the potential of transgenic animals to produce biologically important human proteins, paving the way for the development of other transgenic animals for pharmaceutical production (molecular farming) and improved food quality.

**Correct Answer (a):** Cow Rosie was the first transgenic cow to produce milk enriched with human alpha-lactalbumin protein. This milk is more nutritionally balanced and easier to digest for human infants, bringing it closer in composition to natural human breast milk and offering potential health benefits.

**(b)**  $(\alpha) - 1 - antitrypsin$

**Solution (b):**  $(\alpha)$ -1-antitrypsin ( $(\alpha_1)$ -antitrypsin or AAT) is a protein produced in the liver that inhibits the activity of several proteolytic enzymes, particularly elastase, which is released by neutrophils (a type of white blood cell) to fight infections. The primary beneficial role of  $(\alpha)$ -1-antitrypsin produced through biotechnology is in the treatment of  $(\alpha)$ -1-antitrypsin deficiency.

$(\alpha)$ -1-antitrypsin deficiency is a genetic disorder that can lead to serious lung diseases, such as emphysema, and liver problems. Individuals with this deficiency do not produce enough functional AAT, leading to an imbalance where elastase can destroy lung tissue, causing progressive damage.

Biotechnology has enabled the production of recombinant human  $(\alpha)$ -1-antitrypsin. This therapeutic protein can be administered to individuals with  $(\alpha)$ -1-antitrypsin deficiency through intravenous infusions. The benefits of this biopharmaceutical include:

- **Augmentation therapy:** Increasing the levels of functional AAT in the patient's blood and lungs.
- **Protection of lung tissue:** Inhibiting the excessive activity of elastase, thereby preventing or slowing down the destruction of lung tissue and the progression of emphysema.

- **Improved quality of life:** Helping patients with AAT deficiency to maintain better lung function and a higher quality of life.

The production of recombinant ( $\alpha$ )-1-antitrypsin through biotechnology provides a life-saving or life-improving therapy for individuals suffering from this genetic disorder, highlighting the significant beneficial role of biotechnology in treating human diseases.

**Correct Answer (b):** Recombinant ( $\alpha$ )-1-antitrypsin produced through biotechnology is used as augmentation therapy for individuals with ( $\alpha$ )-1-antitrypsin deficiency. It helps to increase the levels of this protective protein in the lungs, inhibiting elastase activity and preventing the progression of lung diseases like emphysema.

#### Quick Tip

Include a relevant concept, shortcut, or useful trick related to solving this type of problem. Give useful quick tips for the question. Also properly format the text in quick tip as per latex.

**Quick Tip (a):** Remember Rosie the cow as a key example of a transgenic animal producing a human protein in her milk, highlighting the potential for improved nutrition through biotechnology.

**Quick Tip (b):** Associate ( $\alpha$ )-1-antitrypsin deficiency with lung disease (emphysema) and liver problems, and understand that the biotechnologically produced protein serves to replace the deficient or non-functional endogenous protein, protecting the lungs.

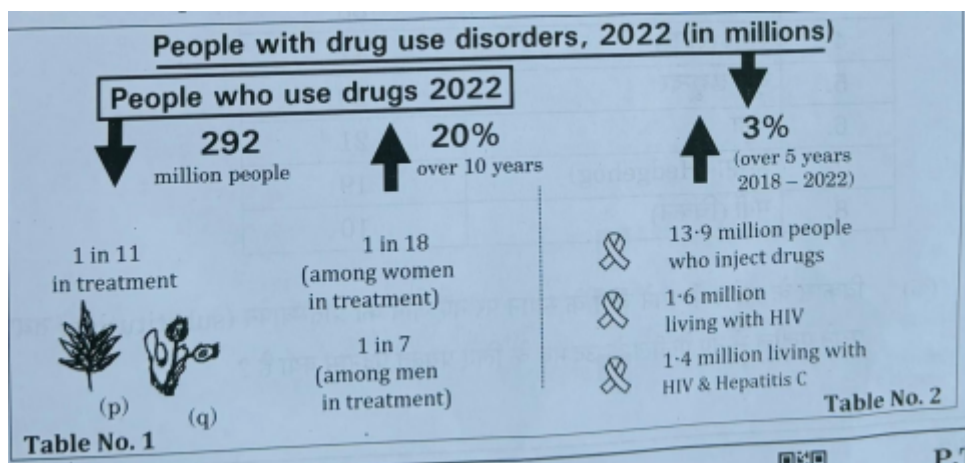
---

## Section - D

**29. Read the following passage and answer the questions that follow.**

Prevention is the frontline response to drug use. Effective interventions address the underlying conditions contributing to drug use, such as a lack of connection to family or community, instability, insecurity, trauma, mental health issues, etc. When addressed, these factors can effectively prevent the initiation of drug use and the progression to drug use

disorders. Study the few key figures of drug use given below and answer the questions that follow.



**(a) What do you infer from the figures in Table No. 1 about the people with drug use disorders, 2022 (in millions)? State any two of your observations.**

**Solution (a):** From the figures presented (which seem to be embedded within the larger graphic and not explicitly labeled as "Table No. 1" but are the main statistics provided), we can infer the following about people with drug use disorders in 2022:

Two observations:

**Significant number of people who use drugs:** In 2022, there were 292 million people who used drugs. This indicates a substantial global prevalence of drug use. **Relatively low treatment rates:** Only 1 in 11 people who use drugs were in treatment. This suggests a significant gap between the number of people using drugs and those receiving help for potential drug use disorders. This highlights a potential unmet need for treatment and intervention services.

**Correct Answer (a):** Inference: There is a large global population of drug users (292 million in 2022), and a relatively small proportion of them (1 in 11) are receiving treatment.

**(b) How are Hepatitis C and HIV related to drug use disorders by people, as shown in Table No. 2? State the correlation between the two.**

**Solution (b):** Table No. 2 (again, embedded in the larger graphic) shows the following figures related to people who inject drugs:

13.9 million people who inject drugs. 1.6 million people living with HIV among those who inject drugs. 1.4 million people living with HIV and Hepatitis C among those who inject drugs. The relationship between Hepatitis C, HIV, and drug use disorders, specifically among people who inject drugs, is evident from these figures. Injecting drugs often involves sharing needles and syringes, which is a significant mode of transmission for blood-borne viruses like HIV and Hepatitis C.

**Correlation:** There is a strong positive correlation between injecting drug use and the prevalence of HIV and Hepatitis C. A substantial proportion of people who inject drugs are living with these infections. Furthermore, there is a considerable overlap between individuals living with both HIV and Hepatitis C within the population of people who inject drugs (1.4 million out of 13.9 million injecting drug users have both). This indicates that injecting drug use is a high-risk behavior for acquiring these viral infections.

**Correct Answer (b):** Hepatitis C and HIV are related to drug use disorders, particularly injecting drug use, as sharing needles facilitates the transmission of these blood-borne viruses. There is a strong positive correlation between injecting drug use and the prevalence of HIV and Hepatitis C, with a significant overlap of individuals co-infected with both viruses among this population.

**(c) (i) Give the scientific name of (p) shown in Table No. 1. OR (ii) Give the scientific name of (q) shown in Table No. 1.**

**Solution (c):** The images (p) and (q) in the graphic appear to represent cannabis (marijuana).

(i) The scientific name of cannabis is *Cannabis sativa*. Other species include *Cannabis indica* and *Cannabis ruderalis*.

(ii) The scientific name of cannabis is *Cannabis sativa*. Other species include *Cannabis indica* and *Cannabis ruderalis*.

Since the question asks for the scientific name of (p) OR (q), providing the scientific name for cannabis is sufficient as both images seem to represent the same substance.

**Correct Answer (c):** *Cannabis sativa* (or *Cannabis* sp.).

### Quick Tip

Include a relevant concept, shortcut, or useful trick related to solving this type of problem. Give useful quick tips for the question. Also properly format the text in quick tip as per latex. **Quick Tip (a):** When inferring from data, focus on the key numbers and proportions provided and state the most significant observations. **Quick Tip (b):** Understand the modes of transmission for blood-borne viruses like HIV and Hepatitis C, and how injecting drug use increases the risk due to the sharing of needles. **Quick Tip (c):** Recognize common drug substances from their visual representations if given, and recall their scientific names.

### 30. Read the following passage and answer the questions that follow.

According to evolutionary theory, every evolutionary change involves the substitution of a new gene for the old one and the new allele arises from the old one. Continuous accumulation of changes in the DNA coding for proteins leads to evolutionary differences. The chemical composition of DNA is basically the same in all living beings, except for differences in the sequence of nitrogenous bases. Given below are percentage relative similarities between human DNA and DNA of other vertebrates:

S.No.	Vertebrates	Percentage similarities
1.	Chimpanzee	100
2.	Gibbon	94
3.	Rhesus Monkey	88
4.	Lemur	47
5.	Treeshrew	28
6.	Mouse	21
7.	Hedgehog	19
8.	Chicken	10

**(a) What is the term used for the substitution of a new gene for the old one and the new allele arising from the old one during evolutionary process?**

**Solution (a):** The substitution of a new gene for an old one is generally referred to as gene duplication and divergence, where an existing gene is duplicated, and one of the copies accumulates mutations that lead to a new function. The new allele arising from the old one is

a result of mutation. Therefore, the processes involved are mutation leading to new alleles and gene duplication followed by mutation and selection leading to new genes. However, if we have to choose a single term that encompasses the origin of new alleles from old ones, mutation is the most direct answer.

**Correct Answer (a):** Mutation (for new alleles arising) and Gene Duplication and Divergence (for new genes arising).

**(b) Which one of the following holds true for the data provided in the above table?**

1. Greater the evolutionary distance, greater are the differences in the nitrogenous bases.
2. Lesser the evolutionary distance, greater are the differences in the nitrogenous bases.
3. Greater the evolutionary distance, lesser are the differences in the nitrogenous bases.
4. Lesser the evolutionary distance, lesser are the differences in the nitrogenous bases.

**Solution (b):** The table shows the percentage similarities between human DNA and the DNA of other vertebrates. A higher percentage similarity indicates a closer evolutionary relationship (less evolutionary distance), and a lower percentage similarity indicates a more distant evolutionary relationship (greater evolutionary distance). The differences in the nitrogenous bases in DNA are what lead to these varying degrees of similarity.

Chimpanzee has 100% similarity, indicating a very close evolutionary relationship and minimal differences in nitrogenous bases. Gibbon (94%) and Rhesus Monkey (93%) have high similarity, suggesting a relatively close evolutionary relationship with humans and fewer differences in their DNA sequences compared to more distantly related vertebrates. Chicken (10%) has the lowest similarity, indicating a large evolutionary distance from humans and significant differences in the sequence of nitrogenous bases. From this pattern, we can conclude that as the evolutionary distance increases, the percentage similarity in DNA decreases, which means the differences in the nitrogenous bases increase. Conversely, as the evolutionary distance decreases, the percentage similarity in DNA increases, meaning there are fewer differences in the nitrogenous bases.

Therefore, the statement "Greater the evolutionary distance, greater are the differences in the nitrogenous bases" holds true for the data provided in the table.

**Correct Answer (b):** (A) Greater the evolutionary distance, greater are the differences in the nitrogenous bases.

**(c) (i) To which category of evolution (divergent or convergent) does the following relationship belong to? Justify your answer. Human and Rhesus Monkey**

**Solution (c) (i):** The relationship between humans and Rhesus monkeys is an example of divergent evolution.

Justification: Humans and Rhesus monkeys share a common ancestor that lived millions of years ago. Over time, due to different environmental pressures and natural selection in their respective habitats, their lineages diverged, leading to the evolution of distinct characteristics. While they still share a significant degree of genetic similarity (93% DNA similarity according to the table, indicating a relatively recent common ancestor compared to other vertebrates listed), they have evolved along separate evolutionary paths, resulting in the anatomical, physiological, and behavioral differences we observe today. Divergent evolution occurs when closely related species evolve in different directions, often adapting to different ecological niches. The high DNA similarity suggests a recent common origin, and the distinct traits of humans and Rhesus monkeys illustrate the divergence from that shared ancestor.

**Correct Answer (c) (i):** Divergent evolution. Justification: Humans and Rhesus monkeys share a recent common ancestor but have evolved along separate lineages, adapting to different environments and developing distinct traits, despite retaining significant genetic similarity.

**OR**

**(c) (ii) Differentiate between Convergent and Divergent evolution.**

**Solution (c) (ii):** Convergent Evolution: Convergent evolution is the process where unrelated or distantly related species independently evolve similar traits as a result of having to adapt to similar environments or ecological niches. These analogous traits serve similar functions but do not arise from a common ancestral feature. The underlying structures or genetic basis of these traits are different, even if the outward appearance or function is similar. Example:

The wings of insects, birds, and bats. These structures serve the same function (flight) and have a superficial similarity in shape, but they have evolved independently and have different underlying anatomical structures (insect wings are extensions of the exoskeleton, bird wings are modified forelimbs with feathers, and bat wings are skin membranes stretched between elongated fingers).

**Divergent Evolution:** Divergent evolution is the process where closely related species evolve in different directions, diverging from a common ancestor. This often occurs when populations of a species become geographically isolated or face different environmental pressures, leading to the accumulation of different genetic and phenotypic changes over time. Divergent evolution can result in the formation of new species that share homologous traits (traits derived from a common ancestor) but may have different functions. Example: The forelimbs of vertebrates. The basic skeletal structure of the forelimb is similar in humans, bats, whales, and horses, reflecting their common ancestry. However, these homologous structures have diverged to perform different functions: grasping in humans, flying in bats, swimming in whales, and running in horses.

In summary, convergent evolution leads to similar traits in unrelated organisms due to similar environmental demands, while divergent evolution leads to different traits in closely related organisms as they adapt to different environments.

**Correct Answer (c) (ii):** Convergent evolution: unrelated species evolve similar traits due to similar environments (analogous traits, different underlying structure). Divergent evolution: closely related species evolve different traits due to different environments (homologous traits, common underlying structure).

### Quick Tip

Include a relevant concept, shortcut, or useful trick related to solving this type of problem. Give useful quick tips for the question. Also properly format the text in quick tip as per latex. **Quick Tip (a):** Remember that evolutionary change at the genetic level involves mutations and the fate of these mutations being influenced by natural selection. **Quick Tip (b):** Understand that the percentage DNA similarity is a direct measure of genetic relatedness and inversely proportional to the evolutionary distance between species. **Quick Tip (c):** Differentiate between divergent evolution (common ancestor, different environments, homologous traits) and convergent evolution (no recent common ancestor, similar environments, analogous traits). The example of vertebrate forelimbs versus wings of insects, birds, and bats is a classic illustration.

---