

CBSE Class X English (Language and Literature) Set 1 (2/5/1)

Question paper with Solutions

Time Allowed :3 Hours	Maximum Marks :80	Total Questions :11
-----------------------	-------------------	---------------------

General Instructions

Read the following instructions very carefully and strictly follow them:

(i) This question paper comprises 11 questions. All questions are compulsory.

(ii) This question paper contains THREE sections -

SECTION - A : Reading Skills

SECTION - B : Grammar and Creative Writing Skills

SECTION - C : Literature Text Book

(iii) Attempt questions based on specific instructions for each part.

Section - A

1. Read the following passage carefully :

(1) The words probiotics, prebiotics, and postbiotics may sound like variations of the same thing, but what a difference a prefix makes. The first is a category of health-promoting microbes. The latter two groups are types of beneficial molecules. But all three biotics are critical for supporting the community of microscopic organisms that live in the gastrointestinal tract, known as the gut microbiome. With both beneficial and harmful bacteria living in the human body, these diet-related factors the biotics help tip the balance in the positive direction. It is important to understand their differences, as you'll see, because each of these factors serves a distinct purpose even as they work together.

- (2) Despite their importance for the gut microbiome, the health benefits of these biotics , which are present in certain foods or result from their metabolism, extend beyond the digestive tract. A growing body of scientific evidence has linked prebiotics, probiotics, and postbiotics, with improvements in metabolic diseases including obesity and cholesterol abnormalities depressive symptoms and poor sleep quality, among many other conditions.
- (3) Besides promoting general gut health, consuming food rich in probiotics can improve irritable bowel syndrome and antibiotic-related diarrhea, prevent travel vitamins and increase nutrient absorption, and decrease the risk of common infections. In fact, when consumed regularly, probiotics have been found to reduce the occurrence of upper respiratory tract infections (like the common cold).
- (4) Many different types of beneficial bacteria are considered probiotics. The most common ones include Lactobacillus and Bifidobacterium, of which there are dozens of strains. "You have to match what it is you're concerned about with the probiotic you should use," says Gregor Reid. Many different types of beneficial bacteria are considered probiotics.
- (5) Some foods, such as yogurt, kefir, kimchee, and fermented soybeans and kombucha naturally contain probiotics. But here's where things get complicated: not all fermented foods or yogurts contain probiotics, Reid says. As a consumer, a good starting point is to look for the if specific strains of bacteria are listed, because then you'll know you're getting the right stuff.
- (6) Simply put, prebiotics are sources of food for those beneficial microbes the probiotics. They are typically a form of carbohydrate or fiber to digest. As a result, they move through the digestive tract to the intestine, where beneficial bacteria (probiotics) can feast on them.
- (7) When you consume foods that are rich in probiotics and prebiotics, the microbes in your gut consume the undigestible prebiotic fiber and produce bioactive compounds called postbiotics. They are ultimately the endgame that we want they affect how our gut operates and keeps the good bacteria there and the bad bacteria out.

Answer the following questions, based on the above passage :

(i) Which of the following statements best describes the author's attitude towards probiotics?

(A) Probiotics, prebiotics and postbiotics are variations of the same thing, with just a difference of a prefix.

(B) All fermented foods or yogurts naturally contain probiotics.

(C) All three biotics are equally important to support microscopic organisms that live in the gut microbiome.

(D) Only probiotics are important as they can improve irritable bowel syndrome and antibiotic-related diarrhea.

Correct Answer: (C) All three biotics are equally important to support microscopic organisms that live in the gut microbiome.

Explanation: The author emphasizes that probiotics, prebiotics, and postbiotics all play essential roles in maintaining gut health, with each contributing to the balance and function of the gut microbiome.

Quick Tip

Look for keywords in the passage that highlight the importance of all three types of biotics rather than just probiotics alone.

(ii) According to the writer, health benefits of all the 'biotics' extend beyond the digestive tract. Rationalise your response in about 40 words.

Answer: The author explains that the health benefits of probiotics, prebiotics, and postbiotics are not limited to gut health. They positively affect other systems in the body, including the immune and nervous systems, improving overall well-being.

Quick Tip

The passage highlights the broader impact of biotics on general health, not just digestive health.

(iii) Complete the sentence appropriately.

To get the right probiotic and to match requirement, it is important to see the label for _____.

Correct Answer: live and active cultures bacteria

Explanation: The writer stresses the importance of choosing probiotics based on the specific strains of bacteria they contain, as different strains serve different health purposes.

Quick Tip

Always check the label for specific strains of bacteria to ensure that the probiotic fits your health needs.

(iv) The passage includes some words that are opposites of each other. From the sets (A) (E) below, identify two sets of antonyms.

- (A) increase and decrease
- (B) probiotic and postbiotic
- (C) beneficial and harmful
- (D) feast and fermented
- (E) consuming and digestive

Correct Answer: (A) increase and decrease (C) beneficial and harmful

Explanation: "Increase" and "decrease" are direct opposites, as are "beneficial" and "harmful."

Quick Tip

Antonyms are pairs of words that have opposite meanings. Pay attention to contrasting words in the passage.

(v) Complete the sentence appropriately. The author wants to stress the fact that there is not just one type of beneficial bacteria considered as probiotic, in fact, some probiotics have ——.

Correct Answer: Dozens of strains

Explanation: The author highlights that various probiotics have different roles depending on the part of the digestive system they affect.

Quick Tip

The passage explains that different probiotics are tailored to address various areas within the gut.

(vi) Based on the reading of the passage, examine in about 40 words, the importance of prebiotics for the human gut and how they are related to probiotics.

Answer: Prebiotics play a vital role by providing nourishment for probiotics, helping them thrive and work effectively. They support the growth of beneficial bacteria in the gut, which enhances the overall health of the digestive system.

Quick Tip

Prebiotics and probiotics work together to improve gut health, with prebiotics helping probiotics perform better.

(vii) As a consumer, if you want to pick a probiotic product, what is the most important thing to keep in mind?

- (A) Any fermented product that contains probiotics.
- (B) Checking the label for specific strains of bacteria.
- (C) All products under "probiotics" section in a grocery store are safe to pick.
- (D) Checking the label which clearly says "probiotics" is sufficient.

Correct Answer: (B) Checking the label for specific strains of bacteria.

Explanation: The author advises consumers to check for specific strains of bacteria to ensure that the probiotics in the product suit their needs.

Quick Tip

It's crucial to choose probiotics based on specific strains, as different strains have varied effects on health.

(viii) "Despite their importance for the gut microbiome, the health benefits of these 'biotics', which are present in certain foods or result from their metabolism, extend beyond the digestive tract." As per this statement from the passage, how relevant are the 'biotics' for humans?

- (A) Their relevance has been proven by scientific evidence.
- (B) Not very relevant as more study is needed.
- (C) Their relevance cannot be generalised for everyone.
- (D) Only probiotics are relevant for humans.

Correct Answer: (A) Their relevance has been proven by scientific evidence.

Explanation: The statement indicates that the benefits of probiotics have been demonstrated and their positive effects extend beyond the digestive system.

Quick Tip

The passage emphasizes scientific backing for the importance of probiotics, supporting their relevance for overall health.

2. Read the following passage carefully :

(1) After more than two years of halted travel, India's tourism and hospitality industry is now cautiously hopeful. Tourism constituted almost 3% of India's GDP and generated around 100 million jobs in 2019. But the sector was severely hit in India — like in other countries — in the past two years.

(2) Indians are now travelling with a vengeance — 'revenge travel', as the phenomenon is called. And many, experts say, now prefer to travel within the country instead of flying to more expensive destinations abroad. The industry is also benefitting from new trends borne of the pandemic such as micro-holidays and workcations.

(3) According to a survey, 51 percent of Indian travellers believed that international travel remained an important means of expanding their horizons and connecting with other cultures. Over two years, the survey said, Indian travellers are now dreaming about their next international trip and more than 70 percent of Indians are excited about being able to travel internationally.

(4) There has also been an increase in the number of students going abroad to study. The increasing desire to study overseas is credited to the pent-up demand from the pandemic's two-year duration. This has got further pronounced because of growing aspirations and affordability among the middle-class students from Tier II and Tier III cities.

The table below shows foreign travel by Indians for different purposes from 2019 to 2022.

Purpose	2019	2020	2021	2022
Business	14.7 L	2.6 L	1.2 L	4.6 L
Job	25.2 L	7.1 L	8.3 L	21.4 L
Residency	89.5 L	28.9 L	34.6 L	72.5 L
Education	5.8 L	2.6 L	4.4 L	6.5 L
Tourists	63.8 L	13.1 L	12.8 L	30.8 L
Visit	42.1 L	10.1 L	15.1 L	40.9 L
Medical	1,448	390	545	1,253
Pilgrimage	8.8 L	1.1 L	4,139	4.6 L
Others	2.6 L	54,775	58,767	1.6 L
Total	2.5 Crore	66.2 L	77.2 L	1.8 Crore

Answer the following questions, based on the above passage :

(i) Complete the following analogy appropriately, based on your understanding of paragraphs 1 and 2.

We can say that the situation when people were travelling with a vengeance is comparable to people going out to dine in hordes, because ——.

Answer: People were tired of being cooped up, started travelling with a vengeance, in same way people were tired of eating home food, started eating out with a vengeance.

Quick Tip

Both situations involve people eagerly engaging in activities after being confined, illustrating the craving for freedom after restrictions.

(ii) Fill in the blanks with the appropriate option from those given in brackets, based on your understanding of paragraph 1. The statement that, "Tourism constituted almost 3% of India's GDP and generated around 100 million jobs in 2019, is a/an —— (fact/opinion) because it is a/an —— (subjective judgement/objective detail).

Correct Answer: fact, objective detail

Explanation: The statement provides verifiable data about tourism's contribution to the GDP and job creation, which is factual and objective, rather than subjective.

Quick Tip

When a statement provides measurable or verifiable data, it is classified as a fact and objective detail.

(iii) Justify the following in about 40 words.

After being cooped up inside their houses for more than two years, Indians are now excited about being able to travel internationally.

Answer: After prolonged lockdowns and restrictions, many people feel a sense of liberation when they can finally travel. The ability to travel internationally represents a return to normalcy, freedom, and exploration, making it a highly anticipated experience for many.

Quick Tip

The long duration of lockdowns created a pent-up demand for travel, making international trips even more appealing after restrictions were lifted.

(iv) Based on the given table, for which purpose did Indian foreign travel increase in 2022 as compared to 2019?

Answer: Based on the table, Indian foreign travel increased in 2022 for leisure and vacation purposes as compared to 2019.

Quick Tip

Look for trends in the table that reflect increases in specific categories such as leisure travel.

(v) "The industry is also benefitting from new trends borne of the pandemic such as micro-holidays and workcations." Which 'industry' is being talked about here?

Answer: The 'industry' being referred to is the tourism and travel industry.

Quick Tip

The reference to trends like micro-holidays and workcations suggests the context of tourism and travel, which evolved due to the pandemic.

(vi) As per the given table, for which purpose did maximum number of Indians undertake foreign travel in 2019 and in 2022? State any one inference that can be drawn from this.

Answer: In 2019, the maximum number of Indians traveled abroad for leisure, and in 2022, the trend continued with leisure as the primary purpose of travel.

Inference: Leisure travel has remained the dominant reason for foreign travel for Indians in both years, highlighting a strong desire for relaxation and exploration post-pandemic.

Quick Tip

Look for patterns in the table and make inferences based on consistent trends in travel purposes.

(vii) Why are students today choosing to go abroad to study? (Answer in about 40 words.)

Answer: Students today are choosing to go abroad for better educational opportunities, exposure to international cultures, and access to high-quality resources and teaching methods. Studying abroad provides them with a global perspective and enhanced career prospects.

Quick Tip

Students opt to study abroad for academic excellence, cultural experience, and future career advantages.

(viii) Which of the following is the main takeaway from the study mentioned in the passage?

- (A) International travel remains an important means of expanding the horizons and connecting with other cultures.
- (B) Though travel, both domestic and international, has picked up, it has yet to reach its previous levels.
- (C) Indians are excited about being able to travel internationally.
- (D) The study needs to include experts from the Tourism Department to offer any

recommendations for further research.

Correct Answer: (B) Though travel, both domestic and international, has picked up, it has yet to reach its previous levels.

Explanation: The passage focuses on the excitement of Indians to travel internationally after the restrictions of the pandemic, highlighting the eagerness to experience the freedom of travel again.

Quick Tip

The key takeaway from the passage is the growing enthusiasm among Indians for international travel, indicating a shift back to normalcy and a renewed desire for exploration.

Section - B GRAMMAR AND CREATIVE SKILLS

3. Complete any ten of the following twelve tasks, as directed

(i) Fill in the blank by using the correct form of the word in the brackets, for the given portion of a letter.

Thank you for exceeding company expectations and —— (inspire) your team with your spectacular work ethic.

Correct Answer: inspiring

Explanation: The sentence requires the present participle (or gerund) form of the verb "inspire" to maintain parallel structure. In this case, the correct form is "inspiring."

Quick Tip

When two or more verbs are linked with "and," they should be in the same form. The word "inspiring" is the present participle, making it the correct choice in this sentence.

(ii) Read the given sentence from a movie review article. Identify the error and supply the correction in the sentence

The movie doesn't let you rest and is packed with engaged action sequences.

Error	Correction

Solution: The word "engaged" is a past participle, but here an adjective form is needed.

Error	Correction
engaged	engaging

"Engaging" is the correct present participle form, which conveys that the action sequences are interesting or captivating.

Corrected sentence: "The movie doesn't let you rest and is packed with engaging action sequences."

(iii) Akshat and Niharika had a conversation about the felicitation of Akshat's achievements.

Report Niharika's question.

What will you be wearing for tomorrow's function ?

Solution: Niharika asked Akshat what he would be wearing for tomorrow's function.

Quick Tip

To report questions in indirect speech, change the question into a statement and adjust the verb tense accordingly.

(iv) Fill in the blank by choosing the correct option:

The film has been created by taking creative liberties and dramatizing the events _____ cinematic expressions.

Answer: for

Solution: The correct preposition is "for" as it correctly conveys the purpose of dramatizing events for cinematic expression.

Quick Tip

"Created for cinematic expressions" conveys that the dramatization is intended for artistic purposes.

(v) Identify the error and supply the correction for the given sentence from a comment posted by an admirer of a reporter.

The report was well document, so no one could claim that it was just one person's opinion.

Use the given format for your response.

Error	Correction

Solution: The correct word is "documented" to properly modify "report."

Error	Correction
document	documented

Quick Tip

"Documented" is the correct past participle form to describe the report.

(vi) Complete the given narrative:

Now that many employees have shown high productivity working from home, will their bosses hereafter ____ them to take working vacations?

- (A) expecting
- (B) expected
- (C) have expected
- (D) expect

Correct Answer: (D) expect

Solution: The correct verb form is "expect" as it is used in the present tense for the future expectation.

Quick Tip

Use the base form "expect" after "will" to indicate a future action or expectation.

(vii) Select the correct option to complete the reporting:

Teacher : Karan, why were you absent yesterday ?

Karan : Yesterday I had cold and fever, sir. I couldn't inform you beforehand.

Teacher : . Take care of your health.

Select the correct option to complete the reporting of the above dialogue.

The teacher asked Karan _____. Karan replied that he had cold and fever the previous day and the teacher beforehand. The teacher advised him to take care of his health.

- (A) why did he remain absent the previous day
- (B) why he had been absent the previous day
- (C) the reason he was absent
- (D) why was he absent yesterday

Correct Answer: (B) why he had been absent the previous day

Solution: In indirect speech, the question "Why were you absent yesterday?" becomes "Why he had been absent the previous day."

Quick Tip

In indirect speech, past perfect is used when reporting a past action that happened before another action.

(viii) Identify the error and supply the correction:

Though all efforts have been made to ensure the accuracy of the content on this website, the same could not be construed as a statement of law or used for any legal purposes.

Option	Error	Correction
(A)	efforts	effort
(B)	ensure	ensuring
(C)	could	should
(D)	of	for

Correct Answer: (C) could → should

Solution: The correct word is "should," as it expresses a stronger recommendation or obligation regarding the content's legal status.

Quick Tip

"Should" is used to indicate advice or an expectation in a formal context.

(ix) Report the following dialogue:

Hawker : Do you want any tomatoes ?

Customer : Yes, indeed! Although they are a bit expensive, I like to add tomatoes to my diet.

The hawker asked the customer whether she wanted any tomatoes. The customer answered in the affirmative and explained that _____.

Solution: The customer explained that although the tomatoes were a bit expensive, she liked to add them to her diet.

Quick Tip

In indirect speech, we often change direct speech into a statement, adjust verb tenses, and remove quotation marks.

(x) Fill in the blank by choosing the correct option:

Crossing this stretch at any time of the day is a challenge. Even during afternoons, there _____ ice cream vendors on the road with people crowding around their carts.

(A) were

(B) are

(C) have been

(D) would be

Correct Answer: (B) are

Solution: The present tense "are" is correct because the sentence talks about a general situation that still applies.

Quick Tip

Use the present tense "are" to describe ongoing or habitual actions in the present.

(xi) Complete the line from a Save the Planet song:

Let's see what we can do to save the planet for me and you. E is for environment, keep it clean. If we ____ together, we'll make the best team.

(A) will be standing

(B) stand

(C) had stood

(D) are standing

Correct Answer: (B) stand

Solution: "Stand" is the correct verb form because it expresses a general truth or action in the present tense.

Quick Tip

The simple present "stand" is used to describe an action or situation that is general, habitual, or universally true.

(xii) Identify the error and supply the correction for the following note in a smart watch's instruction manual.

When the watch is connected to the mobile phone, the watch may automatically calibrate and synchronize with the time of the mobile phone.

Error	Correction

Solution: The verb "may" should be changed to "will" because the sentence is describing a certain action that happens when the watch is connected.

Error	Correction
may	will

Quick Tip

Use "will" to describe certain or expected actions in the future, especially when they are guaranteed or automatic.

4. Attempt any one from (a) and (b) given below :

(a) The problem of open manholes and drains in your locality is posing a threat to the lives of people. As a young citizen, who cares about the upkeep of the locality and safety of the residents, write a letter to the editor of a local daily, in about 120 words, expressing your concern at the situation and suggesting measures to resolve the problem and drawing attention of the concerned authorities. You are Sam/Karen of 67, Mist Apartments, Gagan Vihar, Akash Nagar.

Answer: Letter to the Editor:

Sam/Karen

67, Mist Apartments, Gagan Vihar, Akash Nagar.

Date: February 15, 2025

The Editor,

Local Daily Newspaper,

City.

Subject: Concerns Regarding Open Manholes and Drains in Our Locality

Dear Sir/Madam,

I am writing to draw your attention to a serious issue that has been posing a threat to the safety of the residents in our locality, Gagan Vihar. Open manholes and drains are scattered all over the area, and this has already led to several accidents. As a responsible citizen, I urge the concerned authorities to take immediate action to cover the manholes and maintain proper drainage systems.

Additionally, regular inspections and proper signage should be placed to warn residents about these hazards. Timely repairs and maintenance will greatly improve the safety and upkeep of our locality. I hope this matter will receive the attention it deserves.

Yours sincerely,

Quick Tip

In a letter to the editor, focus on highlighting the problem clearly and suggest feasible solutions. Be polite and formal in tone.

OR

(b) As Rohini Monga / Rohan Monga, of 43 Jai Apartments, Neerbagh, you feel that there should be a dedicated space in the community park for the senior citizens of the society, where they can gather. Write a letter to the RWA of your society in about 120 words, suggesting spaces in the park and emphasizing the importance of creating such a space.

Answer: Letter to the RWA:

Rohini Monga/Rohan Monga

43, Jai Apartments, Neerbagh.

Date: February 15, 2025

The Secretary,

Residents' Welfare Association (RWA),

Jai Apartments, Neerbagh.

Subject: Suggestion for a Dedicated Space for Senior Citizens in the Community Park

Dear Sir/Madam,

I am writing to propose the creation of a dedicated space for senior citizens in the community park of Jai Apartments. Currently, there is no designated area for them to meet, relax, and engage in social activities. A peaceful and comfortable corner with seating arrangements would greatly benefit the elderly residents.

I suggest utilizing the vacant area near the entrance or the shaded spots under the trees for this purpose. Such a space would encourage social interaction and contribute to the well-being of our senior citizens. I hope the RWA will consider this request and take the necessary steps to implement it.

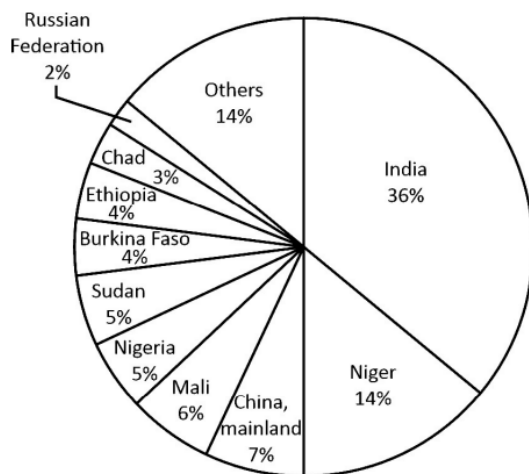
Yours sincerely,

Quick Tip

When writing a letter to the RWA, it's important to be clear about the suggestion and its benefits. Focus on the well-being of the community and offer practical solutions.

5. Attempt any one from (a) and (b) given below :

a) The detailed global millets production data from different countries is depicted in the pie chart given below. Analyze this chart and write an analytical paragraph in about 120 words, by selecting features that support your analysis and suggesting possible reasons for the variation in production by different countries.



Global Millet Production Statistics (FAO 2018)

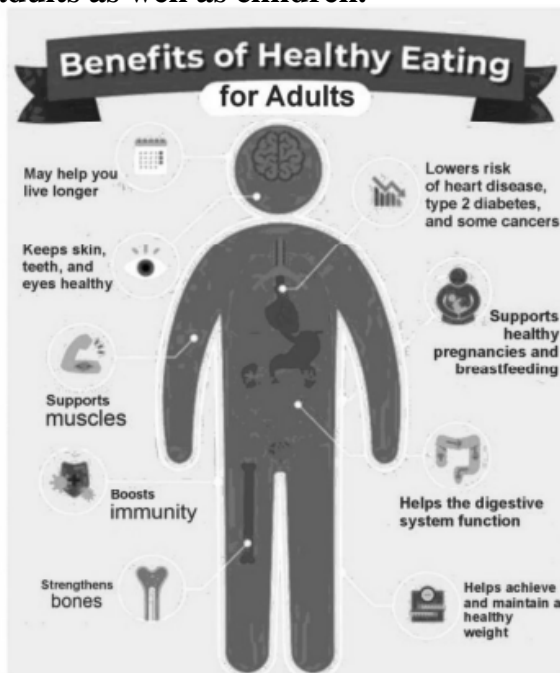
Answer: Analysis of Global Millets Production

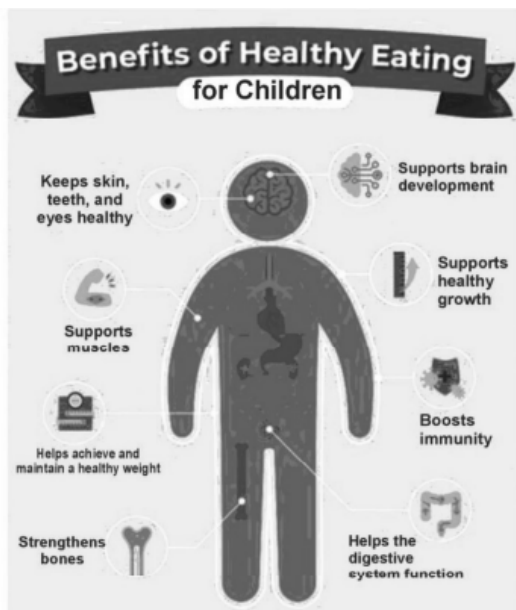
The pie chart above presents the global production of millets by different countries. India is the leading producer, contributing 36% of the global output. This is followed by Niger, which produces 14% of the world's millets, showing a significant share in the global market. Other notable producers include China and the United States, each accounting for smaller shares of around 10% each. The variation in production can be attributed to several factors, such as climatic conditions, agricultural practices, and government policies. India's dominance in millet production can be linked to its favorable weather conditions and long-standing agricultural tradition, while countries like Niger have focused on millet cultivation due to its suitability in arid regions. The overall distribution suggests that millets are an essential crop for food security in many developing countries, especially in Asia and Africa.

Quick Tip

1. **Formal Tone:** Use formal language and a polite tone, especially when addressing concerns or making suggestions.
2. **Structure:** Stick to the structure of a letter—greeting, introduction, body, and conclusion. In the body, focus on the main issue, providing clear suggestions or concerns.
3. **Concise:** Keep the letter brief and to the point while covering all key aspects.
4. **Call to Action:** Always end with a polite request or suggestion for action.

(b) There are many benefits of healthy eating for adults as well as children. The following charts reflect the same. Based on the information given in the charts, write an analytical paragraph in about 120 words, assessing the importance of healthy eating for adults as well as children.





Importance of Healthy Eating for Adults and Children

Healthy eating plays a crucial role in the overall well-being of both adults and children, as shown in the provided charts. For adults, the consumption of a balanced diet leads to improved energy levels, better immune function, and reduced risks of chronic diseases such as heart disease, diabetes, and obesity. In children, healthy eating supports optimal growth, cognitive development, and better performance in school. Nutrients like proteins, vitamins, and minerals are vital for building strong bones and enhancing brain function. The charts clearly illustrate that the benefits of healthy eating are far-reaching, positively impacting physical, mental, and emotional health in both groups. Thus, promoting healthy eating habits from an early age and continuing them into adulthood is essential for long-term health and well-being.

Quick Tip

1. **Identify Key Information:** In an analytical paragraph, first identify the key data or features from the charts that are relevant to the question.
2. **Comparison:** Compare and contrast the data where necessary, explaining variations or trends.
3. **Clear Interpretation:** State why certain figures are higher or lower based on logical reasoning or other factors (e.g., climate, population, policies).
4. **Conclusion:** Conclude by summarizing the key findings and their significance.

Section - C LITERATURE

6. Read the following extracts and answer the questions for any one of the given two, (a) or (b) :

(a) We have, at last, achieved our political emancipation. We pledge ourselves to liberate all our people from the continuing bondage of poverty, deprivation, suffering, gender and other discrimination. Never, never, and never again shall it be that this beautiful land will again experience the oppression of one by another. The sun shall never set on so glorious a human achievement. Let freedom reign. God bless Africa!
(Nelson Mandela Long Walk to Freedom)

(i) State any one inference about Nelson Mandela from the given context: "We have, at last, achieved our political emancipation."

Nelson Mandela is expressing a sense of pride and triumph in the achievement of political freedom after a long struggle. This statement suggests his role in the leadership of the movement that brought political emancipation to South Africa.

(ii) State True or False: When Mandela says, "God bless Africa," he intends to mean well-being and welfare of only black people in South Africa.

False. Mandela's statement, "God bless Africa," refers to the well-being of all people in Africa, including both black and non-black citizens, symbolizing his vision of unity, equality,

and peace for the entire continent.

(iii) "Nelson Mandela's speech is full of optimism". Elaborate in about 40 words with reference to the extract.

Mandela's speech is filled with optimism as he speaks of overcoming oppression and achieving political freedom. His words reflect hope for a future free from poverty, discrimination, and suffering, emphasizing the importance of unity and a glorious achievement for all people.

(iv) Which phrase would correctly complete the given sentence from the extract: "The sun shall never set on so glorious a human achievement."

The phrase would be: "the triumph over apartheid and the achievement of equality and freedom in South Africa." This highlights the lasting and monumental significance of the victory for justice and equality.

Quick Tip

- When analyzing a literary extract, look for key themes such as hope, triumph, or unity.
- Inferences should be drawn from the tone and language of the speaker.
- Remember, Mandela's speeches often carry messages of peace, equality, and unity, which can help you with interpreting his words correctly.

(b) The expected call came within a few days. Mrs. Pumphrey was distraught. Tricki would eat nothing. Refused even his favourite dishes; and besides he had bouts of vomiting. He spent all his time anything.

I had made my plans in advance. The only way was to get Tricki out of the house for a period. I suggested that he be hospitalised for about a fortnight to be kept under observation.

(i) Which of the following is not a reason why Mr. Herriot thinks Tricki needs to be taken out of the house for a period?

(A) He wanted to keep Tricki away from Mrs. Pumphrey.

- (B) He wanted to keep Tricki under observation.
- (C) He wanted to do an experiment on Tricki.
- (D) He wanted to improve Tricki health.

Answer (C) He wanted to do an experiment on Tricki.

The main reasons for taking Tricki out of the house were to keep him under observation and to improve his health, not to experiment on him.

(ii) What was the main reason for Mrs. Pumphrey to be distraught? Answer in about 40 words.

Mrs. Pumphrey was distraught because Tricki, her beloved dog, refused to eat, even his favourite food. He had bouts of vomiting, spent all his time lying on the rug, and showed no interest in going for walks, causing her great concern.

(iii) State True or False: When Mr. Herriot says, "I had made my plans in advance" - what he actually means is, he had already seen this trauma coming for Tricki.

Answer : True.

Explanation:

Mr. Herriot had anticipated Tricki's decline in health and had already planned to take him to the hospital to help him recover, showing that he foresaw the situation and prepared in advance.

(iv) Which of the following best describes Mrs. Pumphrey?

- (A) unkind and inconsiderate
- (B) impractical but compassionate
- (C) anxious and ambitious
- (D) fearful but confident

Correct Answer: (B) Impractical but compassionate.

Solution: Mrs. Pumphrey was deeply attached to Tricki and showed great love and compassion for him. However, her attachment sometimes made her impractical in caring for him, as she was overfeeding and overindulging him, which contributed to Tricki's condition.

Quick Tip

- Pay attention to the motivations and actions of characters to deduce the correct answers. In this case, the focus is on Mr. Herriot's practical approach and Mrs. Pumphrey's emotional attachment.
- For True/False questions, consider the context of the statement and the character's previous actions to determine its validity.
- When answering about character traits, look for descriptions that combine both actions and feelings to get a complete understanding of their personality.

7. Read the following extracts and answer the questions for any one of the given two, (a) or (b) :

(a) In a world of possessions. People will take
Balls, balls will be lost always, little boy.
And no one buys a ball back. Money is external.
He is learning, well behind his desperate eyes,
The epistemology of loss, how to stand up
Knowing what every man must one day know
And most know many days, how to stand up.
(The Ball Poem)

(i) Fill in the blank with one word. When the speaker says "People will take balls, Balls will be lost always, little boy", his tone is _____.

Answer: Instructive/Practical/Realistic/Matter-of-fact

Solution: The correct answer is "Matter-of-fact" because the speaker is simply stating a truth in a neutral, factual manner without any emotion or exaggeration. The tone is direct and unembellished, which is characteristic of a matter-of-fact tone.

(ii) The poet says that money is external. What inference can be drawn from this statement? Answer in about 40 words.

Solution: The phrase "money is external" implies that money is not an inherent part of a

person's true self. It suggests that material wealth is separate from one's inner character and that it doesn't define a person's worth or identity.

(iii) Which of the following best describes the speaker's attitude towards material possessions?

- (A) indifferent
- (B) emotional
- (C) casual
- (D) respectful

Correct Answer: (A) indifferent

Explanation :

The speaker's attitude towards material possessions is casual, as he views them as transient and unimportant. The casual tone used throughout the poem suggests a sense of indifference or a lack of attachment to material things.

(iv) Identify the poetic device used in "And no one buys a ball back".

Answer: Personification.

Solution: The phrase "no one buys a ball back" uses personification, as the action of "buying back" is attributed to a ball, which is an inanimate object. This gives the ball human-like qualities, emphasizing the loss and futility of trying to retrieve it.

Quick Tip

- In tone-based questions, look for clues in the speaker's language and the emotions expressed. A casual tone is often characterized by relaxed or nonchalant language.
- Inference questions require you to think beyond the text and focus on the implied meaning. Consider the larger message of the poem or statement.
- Poetic devices often give depth to the text. Look for actions or descriptions that attribute human qualities to non-human things or abstract ideas, as in personification.

(b) Don't eat that chocolate, Amanda!

Remember your acne, Amanda!

Amanda!

(I am Rapunzel, I have not a care;
life in a tower is tranquil and rare;)

(Amanda)

(i) What is the central idea of the poem as reflected in the lines above? Answer in about 40 words.

Answer : The central idea of the poem reflects the speaker's longing for freedom and escape from constraints. The lines suggest a desire for autonomy and a break from societal pressures or limitations, often depicted through the dream of transformation.

(ii) Complete the sentence with the appropriate option. "Will you please look at me when I'm speaking to you, Amanda!" tells us that the mother's attitude is _____.

(A) loving

(B) relaxed

(C) authoritative

(D) thoughtful

Correct Answer: (C) authoritative.

Solution: The option "authoritative" fits the context, as it aligns with a peaceful, laid-back attitude, which might describe the mood in the context of the poem.

(iii) Identify any one poetic device used in the above extract.

Solution:

Repetition - Amanda

Metaphor - Amanda compares herself to Rapunzel.

Allusion - Amanda's character is alluded to the character of Rapunzel

(iv) For what reason does Amanda imagine herself to be Rapunzel?

Solution: Amanda imagines herself to be Rapunzel to escape from the constraints of her daily life. Rapunzel, with her freedom and isolation in a tower, symbolizes an ideal of independence and solitude that Amanda longs for in her own life.

Quick Tip

- In central idea questions, focus on the key emotions or desires expressed in the poem. Look for the core theme the poet is conveying.
- For completion questions, choose the option that fits the tone or mood of the passage, often indicated by adjectives or actions in the text.
- Poetic devices such as imagery, personification, and metaphor create deeper meaning and emotional resonance. Look for descriptive language that appeals to the senses.
- To understand why a character imagines being someone else, focus on the character's desires or frustrations and how they wish to escape or transform their circumstances.

Question 8

(i) Maxwell decides to keep an otter as a pet. Elucidate with reference to the fact that owning a pet is a life of commitment.

Answer: Maxwell's decision to keep an otter as a pet illustrates the significant responsibility and commitment involved. Owning a pet requires time, effort, and care, as seen when Maxwell realizes that the otter's needs, like food and space, are demanding. The experience teaches him the challenges of keeping a wild animal as a companion.

(ii) 'The Tale of Custard the Dragon' is a humorous ballad. How does Ogden Nash create humour and entertainment in the poem?

Answer: Ogden Nash creates humor through exaggerated characters and situations. The brave characters are contrasted with Custard the dragon, who is fearful, thus subverting expectations. Nash's playful rhyme, witty lines, and humorous tone make the poem entertaining, with Custard's eventual bravery adding to the fun.

(iii) Justify the title of the play 'The Proposal' with reference to the characters and plot.

Answer: The title "The Proposal" refers to the comical and central event of the play, where Lomov proposes to Natalia. The play's humor arises from the absurdities and misunderstandings between the characters, making the proposal more about conflicts and comic timing than genuine romance.

(iv) The author says - 'During our childhood in Goa, the baker used to be our friend, companion and guide.' Elaborate.

Answer: The baker in Goa represents more than just a provider of bread. He is an integral part of the community, acting as a friend and companion during childhood. The mention of the baker's presence highlights the cultural significance and warmth of his relationship with the people in Goa.

(v) Do you think you can love a person for his/her inner beauty alone and not care about the physical appearance? Justify with reference to the theme of the poem 'For Anne Gregory'.

Answer: The poem suggests that love based on inner beauty is pure and lasting, as it transcends superficial attributes like physical appearance. The speaker emphasizes the importance of loving someone for their true self, which resonates with the theme of inner beauty over outward looks.

Quick Tip

- In central idea questions, focus on the key emotions or desires expressed in the context.
- For completion questions, choose the option that fits the tone or mood of the passage, often indicated by adjectives or actions in the text.
- To understand why a character imagines being someone else, focus on the character's desires or frustrations and how they wish to escape or transform their circumstances.

Question 9.

(i) One should never judge a book by its cover. Explain with reference to Ausable and how he outwits Max with his presence of mind.

Answer: Ausable outwits Max by using his presence of mind. Max, who judges Ausable based on his appearance and his supposed weakness, is fooled into thinking that Ausable is vulnerable. However, Ausable uses his wits to trick Max, demonstrating that one should not

judge others by their outward appearance.

(ii) "Horace Danby is a thief who was cheated by another thief." Justify.

Answer: Horace Danby is a thief with a conscience, but he is ultimately cheated by the woman who deceives him into believing she is a trustworthy accomplice. This irony underscores the theme of trust and betrayal in the story.

(iii) How can one say that Ebright's curiosity / inquisitiveness drove him to become a scientist?

Answer: Ebright's natural curiosity about the world led him to explore science from a young age. His fascination with butterflies and his desire to understand the mechanisms behind their life cycle drove him to pursue scientific research, ultimately shaping his career as a scientist.

Quick Tip

- In central idea questions, focus on the key emotions or desires expressed in the context.
- For completion questions, write the text from the textbook itself, often indicated by adjectives or actions in the text.
- To understand why a character imagines being someone else, focus on the character and how they wish to showcase .

Question 10.

(a) You have been asked to present an evaluation of the approaches of both, the Baby Seagull and the Pilot who was lost in the clouds, towards achieving their dreams of conquering the skies.

Write this presentation draft including your insights, comparing the approaches of both.

You may begin this way: One acknowledges that both, the Seagull and the Pilot, wanted to however,

(Reference: Two Stories About Flying)

Answer : Presentation Draft: Comparison of Approaches Towards Achieving Dreams

One acknowledges that both, the Baby Seagull and the Pilot, wanted to conquer the skies and achieve freedom. However, their approaches were different, shaped by their circumstances and emotional states.

The Baby Seagull, initially fearful and unsure, learns through perseverance and gradual exposure to risk. Overcoming its fear, the Seagull finally takes flight, realizing that the sky is no longer a threat but an opportunity for freedom. Its approach is incremental, marked by self-doubt followed by self-discovery.

In contrast, the Pilot in "The Pilot Who Was Lost in the Clouds" faces an immediate life-or-death situation, demonstrating resilience in an intense crisis. With limited resources, the Pilot uses survival instincts and determination to navigate through the clouds. The Pilot's approach is pragmatic, driven by necessity rather than exploration.

Both characters demonstrate courage, but while the Seagull's journey is one of emotional growth, the Pilot's is a struggle for survival and clarity.

Quick Tip

In comparing characters with different approaches to achieving dreams, consider emotional growth versus survival instincts. The Baby Seagull shows personal development, while the Pilot's actions are motivated by a need for survival.

OR

(b) You have been chosen to address the school assembly, to speak on the epistemology of loss and the resilience of the human spirit during times of crisis. Prepare the speech draft, with reference to the commonality of themes in 'The Ball Poem' by John Berryman and 'From the Diary of Anne Frank'.

You may begin this way : Good morning everyone. Today, re that offer a powerful insight into how to deal with loss and the resilience of the human spirit required during times of crisis. You may end this way : Thank you.

Answer: Speech Draft: Epistemology of Loss and Resilience

Good morning respected Principal, teachers, and my dear friends.

Today, I stand before you to reflect upon the epistemology of loss and the resilience of the human spirit during times of crisis. Both "The Ball Poem" by John Berryman and "From the Diary of Anne Frank" offer profound insights into how loss shapes us and how we, as human beings, respond to it.

In "The Ball Poem," the poet expresses the idea that loss, though painful, is an inevitable part of life. The young boy loses his ball, but through this loss, he learns the impermanence of material possessions and comes to understand the deeper reality of life. The resilience in the poem is reflected in his acceptance and emotional growth.

Similarly, in "From the Diary of Anne Frank," Anne Frank's diary chronicles the painful loss of her world—her freedom, her safety, and her sense of normalcy. Yet, Anne's resilience is evident in how she continues to write with hope, despite her circumstances. Both works teach us that while loss may break us, it also becomes a path to inner strength and emotional maturity.

Thank you.

Quick Tip

When discussing themes of loss and resilience, focus on how characters react to their struggles. Both "The Ball Poem" and "From the Diary of Anne Frank" show that loss can lead to emotional growth and strength.

Question 11. (a) Imagine that Bholi writes a diary entry, exploring the themes of 'Girl Child' and 'Impact of Education', in the context of her own experiences.

Write this dairy entry, as Bholi.

Answer: Bholi's Diary Entry

Date: [Enter Date]

Today, as I sit here writing my thoughts, I reflect on how much my life has changed. Once, I was just an ignored and neglected girl, who was considered a burden because of my looks, my speech, and my perceived shortcomings. I was born a girl, and because of that, I was

never valued in the eyes of society.

But everything changed when I went to school. At first, I was nervous, afraid of being laughed at. But my teacher, with her kindness, taught me not to fear. She helped me realize that I had the power to learn, to speak, and to stand up for myself. Through education, I found a new sense of worth, a purpose I never knew existed. Education helped me see that a girl can be as strong and capable as anyone.

I feel proud today. I am no longer Bholi, the girl who was seen as a burden. I am Bholi, the girl who can speak, who can think, and who can change her life through knowledge.

Education is the key, and I will always treasure it.

Bholi

Quick Tip

When writing a diary entry for a character like Bholi, focus on their emotional transformation and how key themes like education and gender influence their development.

OR

(b) A character arc is the transformation or development of a character throughout a story and refers to the changes a character undergoes as a result of his/her experiences, challenges and interactions with other characters.

In light of the above information, trace the character arc of Griffin in H.G. Wells' 'Footprints without Feet'.

Answer: Character Arc of Griffin in 'Footprints Without Feet'

Griffin, in H.G. Wells' "Footprints Without Feet," undergoes a significant character arc. Initially, he is portrayed as a brilliant scientist, but his obsession with invisibility drives him into a world of crime and recklessness.

At the beginning of the story, Griffin's transformation into an invisible man is seen as a triumph of science. However, as he begins to use his newfound power for personal gain, his character takes a darker turn. His arrogance, sense of invincibility, and disregard for the welfare of others lead him to commit acts of violence and theft.

As the story progresses, Griffin's character arc shows the consequences of his actions. His

sense of isolation and the increasing difficulty in maintaining his invisibility highlight the tragic downfall of a man who let his pursuit of power consume him. Ultimately, Griffin's arc is one of self-destruction, where his brilliant mind is overshadowed by his moral decay and greed.

The story serves as a cautionary tale about the dangers of unchecked ambition and the loss of humanity in the pursuit of knowledge.

Quick Tip

When tracing a character arc, focus on how a character's initial traits evolve as a result of their decisions, actions, and interactions with others. Griffin's arc is shaped by his misuse of power and eventual downfall.