

## NEET UG 2024 Question Paper Set Q2

**Time Allowed :** 3 Hours 20 mins

**Maximum Marks :** 720

**Total Questions :** 200

### General Instructions

**Read the following instructions very carefully and strictly follow them:**

1. The test is of 3 hours 20 minutes duration and the Test Booklet contains 200 multiple-choice questions (four options with a single correct answer) from Physics, Chemistry and Biology (Botany and Zoology). 50 questions in each subject are divided into two Sections (A and B) as per details given below:
  - Section-A shall consist of 35 (Thirty-five) questions in each subject (Question Nos-1 to 35, 51 to 85, 101 to 135 and 151 to 185). All questions are compulsory.
  - Section-B shall consist of 15 (Fifteen) questions in each subject (Question Nos- 36 to 50, 86 to 100, 136 to 150 and 186 to 200). In Section B, a candidate needs to attempt only 10 (Ten) questions out of 15 (Fifteen).
2. Candidates are advised to read all 15 questions in each subject of Section B before they start attempting the question paper. In the event of a candidate attempting more than ten questions, the first ten questions attempted by the candidate shall be evaluated.
3. Each question carries 4 marks. For each correct response, the candidate will get 4 marks. For each incorrect response, one mark will be deducted from the total scores. The maximum marks are 720.
4. Use Blue / Black Ball Point Pen only for writing particulars on this page / marking responses on Answer Sheet. Rough work is to be done in the space provided for this purpose in the Test Booklet only.

# PHYSICS

## SECTION-A

1. Given below are two statements:

**Statement I:** Atoms are electrically neutral as they contain equal number of positive and negative charges.

**Statement II:** Atoms of each element are stable and emit their characteristic spectrum.

In the light of the above statements, choose the *most appropriate* answer from the options given below:

- (1) Both Statement I and Statement II are correct
  - (2) Both Statement I and Statement II are incorrect
  - (3) Statement I is correct but Statement II is incorrect
  - (4) Statement I is incorrect but Statement II is correct
- 

2. If  $x = 5 \sin \left( \pi t + \frac{\pi}{3} \right)$  represents the motion of a particle executing simple harmonic motion, the amplitude and time period of motion, respectively, are:

- (1) 5 cm, 2 s
  - (2) 5 m, 2 s
  - (3) 5 cm, 1 s
  - (4) 5 m, 1 s
- 

3. A bob is whirled in a horizontal plane by means of a string with an initial speed of 0 rpm. The tension in the string is  $T$ . If speed becomes  $2\omega$  while keeping the same radius, the tension in the string becomes:

- (1)  $T$
  - (2)  $4T$
  - (3)  $\frac{T}{4}$
  - (4)  $4\frac{T}{4}$
- 

4. In an ideal transformer, the turns ratio  $\frac{N_p}{N_s} = \frac{1}{2}$ . The ratio  $V_s : V_p$  is equal to (the symbols carry their usual meaning):

- (1) 1 : 2

(2) 2 : 1

(3) 1 : 1

(4) 1 : 4

---

5. A logic circuit provides the output  $Y$  as per the following truth table:

$A$	$B$	$Y$
0	0	1
0	1	0
1	0	1
1	1	0

The expression for the output  $Y$  is:

(1)  $AB + \bar{A}$

(2)  $AB + \bar{A}$

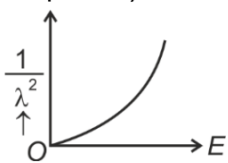
(3)  $\bar{B}$

(4)  $B$

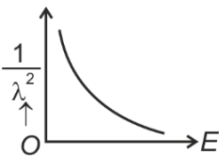
---

6. The graph which shows the variation of  $(\frac{1}{\lambda^2})$  and its kinetic energy,  $E$  (where  $\lambda$  is de Broglie wavelength of a free particle):

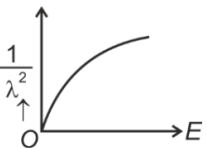
(1)



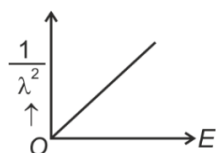
(2)



(3)



(4)



7. The output  $Y$  of the given logic gate is similar to the output of/an:

- (1) NAND gate
- (2) NOR gate
- (3) OR gate
- (4) AND gate

8. In a uniform magnetic field of 0.049 T, a magnetic needle performs 20 complete oscillations in 5 seconds as shown. The moment of inertia of the needle is  $9.8 \times 10^{-6} \text{ kg m}^2$ . If the magnitude of magnetic moment of the needle is  $x \times 10^{-5} \text{ Am}^2$ , then the value of  $x$  is:

- (1)  $5\pi^2$
- (2)  $128\pi^2$
- (3)  $50\pi^2$
- (4)  $1280\pi^2$

9. A thermodynamic system is taken through the cycle  $abcd$ . The work done by the gas along the path  $bc$  is:

- (1) Zero
- (2) 30 J
- (3) -90 J
- (4) -60 J

10. In the above diagram, a strong bar magnet is moving towards solenoid-2 from solenoid-1. The direction of induced current in solenoid-1 and that in solenoid-2, respectively, are through the directions:

- (1) AB and DC
- (2) BA and CD
- (3) AB and CD

(4) BA and DC

---

**11.** An unpolarised light beam strikes a glass surface at Brewster's angle. Then:

- (1) The reflected light will be partially polarised.
  - (2) The reflected light will be completely polarised.
  - (3) Both the reflected light and refracted light will be completely polarised.
  - (4) The reflected light will be completely polarised but the refracted light will be partially polarised.
- 

**12.** A wire of length 'l' and resistance 100 is divided into 10 equal parts. The first 5 parts are connected in series while the next 5 parts are connected in parallel. The two combinations are again connected in series. The resistance of this final combination is:

- (1) 26
  - (2) 52
  - (3) 55
  - (4) 60
- 

**13.** A horizontal force 10 N is applied to a block A as shown in figure. The mass of blocks A and B are 2 kg and 3 kg respectively. The blocks slide over a frictionless surface. The force exerted by block A on block B is:

- (1) Zero
  - (2) 4 N
  - (3) 6 N
  - (4) 10 N
- 

**14.** Two bodies A and B of same mass undergo completely inelastic one-dimensional collision. The body A moves with velocity  $v$  while B is at rest before collision. The velocity of the system after collision is  $v_2$ . The ratio  $v : v_2$  is:

- (1) 1 : 2
- (2) 2 : 1
- (3) 4 : 1
- (4) 1 : 4

---

**15.** Given below are two statements: one is labelled as **Assertion A** and the other is labelled as **Reason R**.

**Assertion A:** The potential ( $V$ ) at any axial point, at 2 m distance ( $r$ ) from the centre of the dipole of dipole moment vector  $P$  of magnitude,  $4 \times 10^{-6}$  C m, is  $9 \times 10^3$  V.

**Reason R:**  $V = \frac{2P}{4\pi\epsilon_0 r^2}$ , where  $r$  is the distance of any axial point, situated at 2 m from the centre of the dipole.

In the light of the above statements, choose the correct answer from the options given below:

- (1) Both A and R are true and R is the correct explanation of A.
  - (2) Both A and R are true and R is NOT the correct explanation of A.
  - (3) A is true but R is false.
  - (4) A is false but R is true.
- 

**16.** Match List I with List II.

**List I** (Spectral Lines of Hydrogen for transitions from)      **List II** (Wavelengths (nm))

<b>A.</b> $n = 3 \rightarrow n = 2$	<b>I.</b> 410.2
<b>B.</b> $n = 4 \rightarrow n = 2$	<b>II.</b> 434.1
<b>C.</b> $n = 5 \rightarrow n = 2$	<b>III.</b> 656.3
<b>D.</b> $n = 6 \rightarrow n = 2$	<b>IV.</b> 486.1

Choose the correct answer from the options given below:

- (1) A-I, B-II, C-IV, D-III
  - (2) A-II, B-IV, C-III, D-I
  - (3) A-IV, B-II, C-I, D-III
  - (4) A-I, B-II, C-III, D-IV
- 

**17.** In a vernier calipers,  $N + 1$  divisions of vernier scale coincide with  $N$  divisions of main scale. If 1 MSD represents 0.1 mm, the vernier constant (in cm) is:

- (1)  $\frac{1}{10N}$
- (2)  $\frac{1}{1000(N+1)}$
- (3)  $100N$
- (4)  $10(N + 1)$

---

**18.** A thin spherical shell is charged by some source. The potential difference between the two points  $C$  and  $P$  (in  $V$ ) shown in the figure is:

- (1)  $3 \times 10^5$
  - (2)  $1 \times 10^5$
  - (3)  $0.5 \times 10^5$
  - (4) Zero
- 

**19.** The terminal voltage of the battery, whose emf is  $10\text{ V}$  and internal resistance  $1\ \Omega$ , when connected through an external resistance of  $4\ \Omega$  as shown in the figure is:

- (1)  $4\text{ V}$
  - (2)  $6\text{ V}$
  - (3)  $8\text{ V}$
  - (4)  $10\text{ V}$
- 

**20.** If  $c$  is the velocity of light in free space, the correct statements about photon among the following are: (A) The energy of a photon is  $E = h\nu$ .

(B) The velocity of a photon is  $c$ .

(C) The momentum of a photon,  $p$ , is  $\frac{h\nu}{c}$ .

(D) In a photon-electron collision, both total energy and total momentum are conserved.

(E) Photon possesses positive charge.

Choose the correct answer from the options given below:

- (1) A and B only
  - (2) A, B, C and D only
  - (3) A, C and D only
  - (4) A, B, D and E only
- 

**21.** A particle moving with uniform speed in a circular path maintains: (1) Constant velocity

(2) Constant acceleration

(3) Constant velocity but varying acceleration

(4) Varying velocity and varying acceleration

---

**22.** In the following circuit, the equivalent capacitance between terminal  $A$  and terminal  $B$  is:

- (1)  $2 \mu\text{F}$
  - (2)  $1 \mu\text{F}$
  - (3)  $0.5 \mu\text{F}$
  - (4)  $4 \mu\text{F}$
- 

**23.** A thin flat circular disc of radius  $4.5 \text{ cm}$  is placed gently over the surface of water. If surface tension of water is  $0.07 \text{ N m}^{-1}$ , then the excess force required to take it away from the surface is:

- (1)  $19.8 \text{ mN}$
  - (2)  $198 \text{ N}$
  - (3)  $1.98 \text{ mN}$
  - (4)  $99 \text{ N}$
- 

**24.** The maximum elongation of a steel wire of  $1 \text{ m}$  length if the elastic limit of steel and its Young's modulus, respectively, are  $8 \times 10^8 \text{ N m}^{-2}$  and  $2 \times 10^{11} \text{ N m}^{-2}$  is:

- (1)  $4 \text{ mm}$
  - (2)  $0.4 \text{ mm}$
  - (3)  $40 \text{ mm}$
  - (4)  $8 \text{ mm}$
- 

**25.** In the nuclear emission stated above, the mass number and atomic number of the product  $Q$  respectively, are: (1)  $280, 81$

- (2)  $286, 80$
  - (3)  $288, 82$
  - (4)  $286, 81$
- 

**26.** At any instant of time  $t$ , the displacement of any particle is given by  $2t - 1$  (SI unit) under the influence of a force of  $5 \text{ N}$ . The value of instantaneous power is (in SI unit):

- (1) 10
  - (2) 5
  - (3) 7
  - (4) 6
- 

**30.** A wheel of a bullock cart is rolling on a level road as shown in the figure below. If its linear speed is  $v$  in the direction shown, which one of the following options is correct (P and Q are any highest and lowest points on the wheel, respectively)?

- (1) Point P moves slower than point Q
  - (2) Point P moves faster than point Q
  - (3) Both the points P and Q move with equal speed
  - (4) Point P has zero speed
- 

**31.** A tightly wound 100 turns coil of radius 10 cm carries a current of 7 A. The magnitude of the magnetic field at the center of the coil is (Take permeability of free space as  $4\pi \times 10^{-7}$  SI units):

- (1) 44 mT
  - (2) 4.4 T
  - (3) 4.4 mT
  - (4) 44 T
- 

**32.** If the monochromatic source in Young's double slit experiment is replaced by white light, then:

- (1) Interference pattern will disappear
  - (2) There will be a central dark fringe surrounded by a few colored fringes
  - (3) There will be a central bright white fringe surrounded by a few colored fringes
  - (4) All bright fringes will be of equal width
- 

**33.** Match List-I with List-II.

**List-I (Material)**      **List-II (Susceptibility  $\chi$ )**

- A. Diamagnetic    **I.**  $\chi = 0$   
B. Ferromagnetic    **II.**  $0 > \chi > -1$   
C. Paramagnetic    **III.**  $\chi \gg 1$   
D. Non-magnetic    **IV.**  $0 < \chi < \epsilon$  (a small positive number)
- (1) A-I, B-III, C-IV, D-II  
(2) A-II, B-I, C-III, D-IV  
(3) A-III, B-II, C-I, D-IV  
(4) A-IV, B-III, C-II, D-I
- 

**34.** A light ray enters through a right-angled prism at point P with the angle of incidence  $30^\circ$  as shown in figure. It travels through the prism parallel to its base BC and emerges along the face AC. The refractive index of the prism is:

- (1)  $\sqrt{5}/4$   
(2)  $\sqrt{5}/2$   
(3)  $\sqrt{3}/4$   
(4)  $\sqrt{3}/2$
- 

**35.** The mass of a planet is  $\frac{1}{10}$ th of that of the Earth and its diameter is half that of the Earth. The acceleration due to gravity on that planet is:

- (1)  $19.6 \text{ m/s}^2$   
(2)  $9.8 \text{ m/s}^2$   
(3)  $4.9 \text{ m/s}^2$   
(4)  $3.92 \text{ m/s}^2$
- 

**36.** The minimum energy required to launch a satellite of mass  $m$  from the surface of earth of mass  $M$  and radius  $R$  in a circular orbit at an altitude of  $2R$  from the surface of the earth is:

- (1)  $\frac{5GMm}{6R}$   
(2)  $\frac{2GMm}{3R}$   
(3)  $\frac{GMm}{2R}$   
(4)  $\frac{GMm}{3R}$
-

**37.** A metallic bar of Young's modulus,  $0.5 \times 10^{11} \text{ N/m}^2$  and coefficient of linear thermal expansion  $10^{-5} \text{ }^\circ\text{C}^{-1}$ , length 1 m and area of cross-section  $10^{-3} \text{ m}^2$  is heated from  $0^\circ\text{C}$  to  $100^\circ\text{C}$  without expansion or bending. The compressive force developed in it is:

- (1)  $5 \times 10^3 \text{ N}$
  - (2)  $50 \times 10^3 \text{ N}$
  - (3)  $100 \times 10^3 \text{ N}$
  - (4)  $2 \times 10^3 \text{ N}$
- 

**38.** A small telescope has an objective of focal length 140 cm and an eye piece of focal length 5.0 cm. The magnifying power of telescope for viewing a distant object is:

- (1) 34
  - (2) 28
  - (3) 17
  - (4) 32
- 

**39.** A  $10 \mu\text{F}$  capacitor is connected to a 210 V, 50 Hz source as shown in figure. The peak current in the circuit is nearly ( $\pi = 3.14$ ): (1) 0.58 A

- (2) 0.93 A
  - (3) 1.20 A
  - (4) 0.35 A
- 

**40.** If the mass of the bob in a simple pendulum is increased to thrice its original mass and its length is made half its original length, then the new time period of oscillation is  $\sqrt{x}$  times its original time period. Then the value of  $x$  is:

- (1)  $\sqrt{3}$
  - (2)  $\sqrt{2}$
  - (3)  $2\sqrt{3}$
  - (4) 4
- 

**41.** The property which is **not** of an electromagnetic wave traveling in free space is:

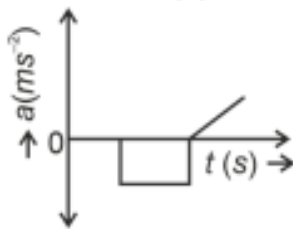
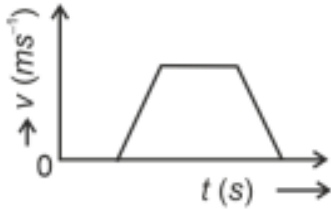
- (1) They are transverse in nature

- (2) The energy density in the electric field is equal to the energy density in the magnetic field
  - (3) They travel with a speed equal to  $\frac{1}{\sqrt{\mu_0 \epsilon_0}}$
  - (4) They originate from charges moving with uniform speed
- 

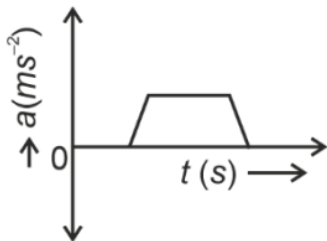
**43.** A force defined by  $F = \alpha t + \beta$  acts on a particle at a given time  $t$ . The factor which is dimensionless, if  $\alpha$  and  $\beta$  are constants, is:

- (1)  $\frac{\beta t}{\alpha}$
  - (2)  $\frac{\alpha t}{\beta}$
  - (3)  $\alpha \beta t$
  - (4)  $\frac{\alpha \beta}{t}$
- 

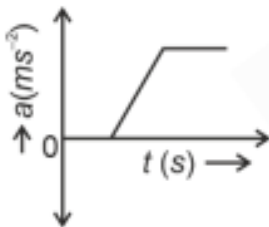
**44.** The velocity ( $v$ ) – time ( $t$ ) plot of the motion of a body is shown below. The acceleration ( $a$ ) – time ( $t$ ) graph that best suits this motion is:



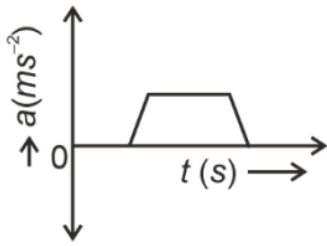
(1)



(2)



(3)

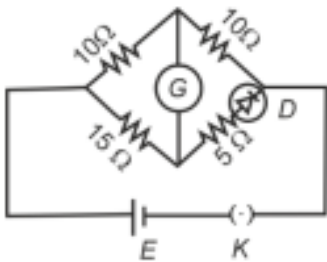


(4)

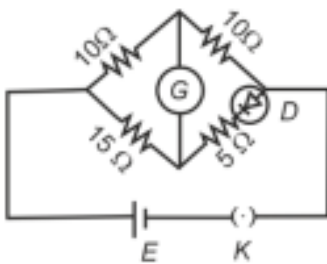
45. Two heaters A and B have power rating of 1 kW and 2 kW, respectively. These two are first connected in series and then in parallel to a fixed power source. The ratio of power outputs for these two cases is:

- (1) 1 : 1
- (2) 2 : 9
- (3) 1 : 2
- (4) 2 : 3

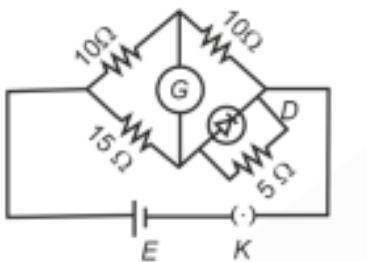
46. Choose the correct circuit which can achieve the bridge balance. (1)



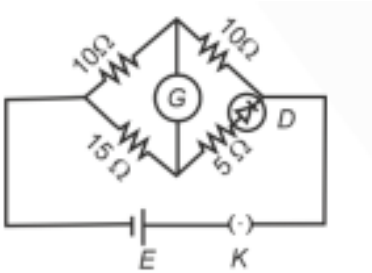
(2)



(3)



(4)



---

**47.** A sheet is placed on a horizontal surface in front of a strong magnetic pole. A force is needed to: **A.** hold the sheet there if it is magnetic. **B.** hold the sheet there if it is non-magnetic. **C.** move the sheet away from the pole with uniform velocity if it is conducting. **D.** move the sheet away from the pole with uniform velocity if it is both, non-conducting and non-polar. (1) B and D only

(2) A and C only

(3) A, C and D only

(4) C only

---

**48.** If the plates of a parallel plate capacitor connected to a battery are moved closer to each other, then: **A.** the charge stored in it, increases. **B.** the energy stored in it, decreases. **C.** its capacitance increases. **D.** the ratio of charge to its potential remains the same. **E.** the product of charge and voltage increases.

Choose the most appropriate answer from the options given below:

(1) A, B and E only

(2) A, C and E only

(3) B, D and E only

(4) A, B and C only

---

**49.** An iron bar of length  $L$  has magnetic moment  $M$ . It is bent at the middle of its length such that the two arms make an angle  $60^\circ$  with each other. The magnetic moment of this new magnet is:

(1)  $M$

(2)  $\frac{M}{2}$

(3)  $2M$

(4)  $\frac{M}{\sqrt{3}}$

---

- 50.** A parallel plate capacitor is charged by connecting it to a battery through a resistor. If  $I$  is the current in the circuit, then in the gap between the plates: (1) There is no current  
(2) Displacement current of magnitude equal to  $I$  flows in the same direction as  $I$   
(3) Displacement current of magnitude equal to  $I$  flows in a direction opposite to that of  $I$   
(4) Displacement current of magnitude greater than  $I$  flows but can be in any direction
- 

## CHEMISTRY

### SECTION-A

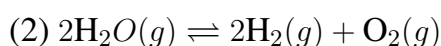
- 51.** On heating, some solid substances change from solid to vapor state without passing through liquid state. The technique used for the purification of such solid substances based on the above principle is known as: (1) Crystallization  
(2) Sublimation  
(3) Distillation  
(4) Chromatography
- 

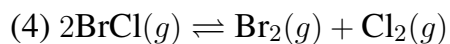
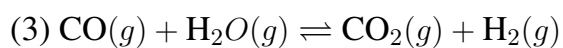
- 52.** Match List I with List II.

**List-I (Process)      List-II (Conditions)**

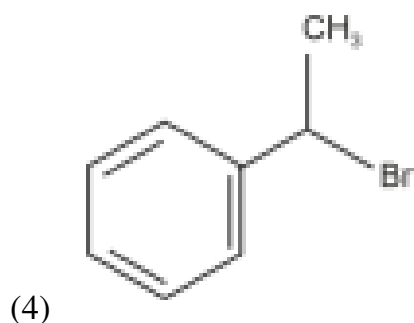
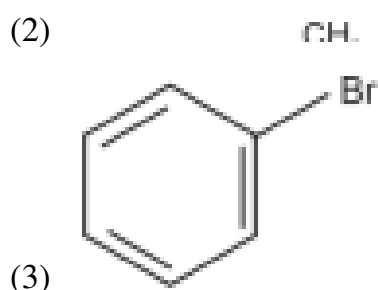
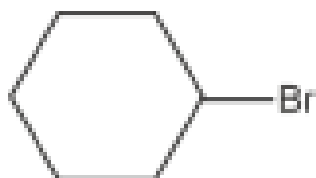
- |                              |  |
|------------------------------|--|
| <b>A.</b> Isothermal process | <b>I.</b> No heat exchange                     |
| <b>B.</b> Isochoric process  | <b>II.</b> Carried out at constant temperature |
| <b>C.</b> Isobaric process   | <b>III.</b> Carried out at constant volume     |
| <b>D.</b> Adiabatic process  | <b>IV.</b> Carried out at constant pressure    |
- (1) A-IV, B-III, C-II, D-I  
(2) A-II, B-III, C-IV, D-I  
(3) A-I, B-II, C-III, D-IV  
(4) A-II, B-III, C-IV, D-I
- 

- 53.** In which of the following equilibria,  $K_p$  and  $K_c$  are NOT equal? (1)





54. The compound that will undergo  $S_N1$  reaction with the fastest rate is:



55. A compound with a molecular formula of  $C_6H_{14}$  has two tertiary carbons. Its IUPAC name is:

- (1) n-hexane
  - (2) 2-methylpentane
  - (3) 2,3-dimethylbutane
  - (4) 2,2-dimethylbutane
- 

56. Given below are two statements: **Statement I:** The boiling point of hydrides of Group 16 elements follow the order  $\text{H}_2\text{O} > \text{H}_2\text{Te} > \text{H}_2\text{Se} > \text{H}_2\text{S}$ . **Statement II:** On the basis of

molecular mass,  $\text{H}_2\text{O}$  is expected to have lower boiling point than the other members of the group but due to the presence of extensive H-bonding in  $\text{H}_2\text{O}$ , it has higher boiling point.

Choose the most appropriate answer from the options given below:

- (1) Both Statement I and Statement II are true
  - (2) Both Statement I and Statement II are false
  - (3) Statement I is true but Statement II is false
  - (4) Statement I is false but Statement II is true
- 

**57.** For the reaction  $2A \leftrightarrow B + C$ ,  $K_c = 4 \times 10^{-3}$ . At a given time, the composition of reaction mixture is:  $[A] = [B] = [C] = 2 \times 10^{-3} \text{ M}$ . Then, which of the following is correct?

- (1) Reaction is at equilibrium.
  - (2) Reaction has a tendency to go in forward direction.
  - (3) Reaction has a tendency to go in backward direction.
  - (4) Reaction has gone to completion in forward direction.
- 

**58.** Activation energy of any chemical reaction can be calculated if one knows the value of:

- (1) rate constant at standard temperature
  - (2) probability of collision
  - (3) orientation of reactant molecules during collision
  - (4) rate constant at two different temperatures
- 

**59.** Given below are two statements: **Statement I:** Both  $[\text{Co}(\text{NH}_3)_6]^{3+}$  and  $[\text{CoF}_6]^{3-}$  complexes are octahedral but differ in their magnetic behaviour. **Statement II:**

$[\text{Co}(\text{NH}_3)_6]^{3+}$  is diamagnetic whereas  $[\text{CoF}_6]^{3-}$  is paramagnetic.

In the light of the above statements, choose the correct answer from the options given below:

- (1) Both Statement I and Statement II are true
  - (2) Both Statement I and Statement II are false
  - (3) Statement I is true but Statement II is false
  - (4) Statement I is false but Statement II is true
- 

**60.** The highest number of helium atoms is in: (1) 4 mol of helium

- (2) 4 u of helium
  - (3) 4 g of helium
  - (4) 2.271098 L of helium at STP
- 

- 61.** Arrange the following elements in increasing order of first ionization enthalpy: Li, Be, B, C, N
- (1) Li < Be < B < C < N
  - (2) Li < B < Be < C < N
  - (3) Li < Be < C < B < N
  - (4) Li < Be < N < B < C
- 

- 62.** Which one of the following alcohols reacts instantaneously with Lucas reagent?
- (1) CH<sub>3</sub>-CH<sub>2</sub>-CH<sub>2</sub>-CH<sub>2</sub>OH
  - (2) CH<sub>3</sub>-CH<sub>2</sub>-CH(OH)-CH<sub>3</sub>
  - (3) CH<sub>3</sub>-CH(CH<sub>3</sub>)-CH<sub>2</sub>OH
  - (4) (CH<sub>3</sub>)<sub>3</sub>C-OH
- 

- 63.** 'Spin only' magnetic moment is same for which of the following ions?
- (A) Ti<sup>3+</sup>
  - (B) Cr<sup>2+</sup>
  - (C) Mn<sup>2+</sup>
  - (D) Fe<sup>2+</sup>
  - (E) Sc<sup>3+</sup>

Choose the most appropriate answer from the options given below:

- (1) B and D only
  - (2) A and E only
  - (3) B and C only
  - (4) A and D only
- 

- 64.** The reagents with which glucose does not react to give the corresponding tests/products are:
- (A) Tollen's reagent

(B) Schiff's reagent

(C) HCN

(D) NH<sub>2</sub>OH

(E) NaHSO<sub>3</sub>

Choose the correct options from the given below:

(1) B and C

(2) A and D

(3) B and E

(4) E and D

**65.** Given below are two statements: **Statement I:** Aniline does not undergo Friedel-Crafts alkylation reaction. **Statement II:** Aniline cannot be prepared through Gabriel synthesis.

In the light of the above statements, choose the correct answer from the options given below:

(1) Both Statement I and Statement II are true

(2) Both Statement I and Statement II are false

(3) Statement I is correct but Statement II is false

(4) Statement I is incorrect but Statement II is true

**66.** The energy of an electron in the ground state ( $n = 1$ ) for He ion is  $-x J$ . Then, for an electron in  $n = 2$  state for Be<sup>3</sup> ion in  $J$  is:

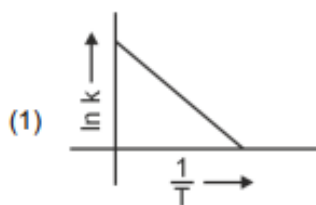
(1)  $-x$

(2)  $\frac{x}{9}$

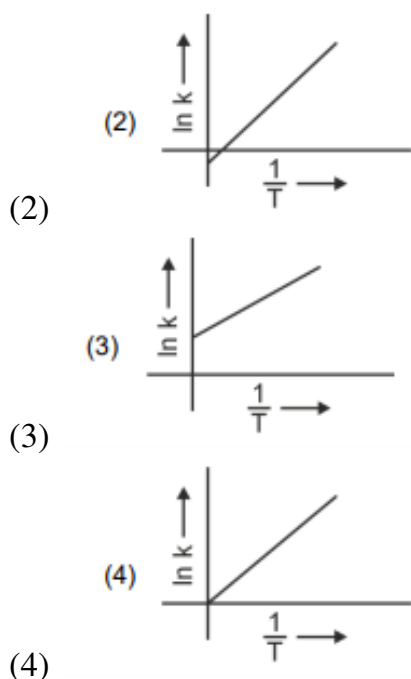
(3)  $-4x$

(4)  $-\frac{4x}{9}$

**67.** Which plot of  $\ln k$  vs  $\frac{1}{T}$  is consistent with Arrhenius equation?



(1)



**68.** Given below are two statements: **Statement I:** The boiling point of three isomeric pentanes follows the order n-pentane  $\zeta$  isopentane  $\zeta$  neopentane. **Statement II:** When branching increases, the molecule attains a shape of sphere. This results in smaller surface area for contact, due to which the intermolecular forces between the spherical molecules are weak, thereby lowering the boiling point.

In the light of the above statements, choose the most appropriate answer from the options given below:

- (1) Both Statement I and Statement II are correct
- (2) Both Statement I and Statement II are incorrect
- (3) Statement I is correct but Statement II is incorrect
- (4) Statement I is incorrect but Statement II is correct

**69.** The  $E^\circ$  value for the  $\text{Mn}^{3+}/\text{Mn}^{2+}$  couple is more positive than that of  $\text{Cr}^{3+}/\text{Cr}^{2+}$  or  $\text{Fe}^{3+}/\text{Fe}^{2+}$  due to the change of: (1)  $d^5$  to  $d^6$  configuration

- (2)  $d^5$  to  $d^2$  configuration
- (3)  $d^4$  to  $d^5$  configuration
- (4)  $d^3$  to  $d^5$  configuration

70. In which of the following processes entropy increases?

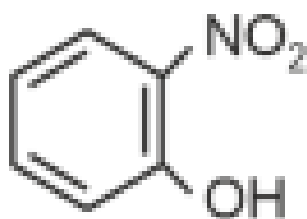
(A) A liquid evaporates to vapor. (B) Temperature of a crystalline solid lowered from 130 K to 0 K. (C)  $\text{NaHCO}_3 \rightarrow \text{Na}_2\text{CO}_3 + \text{CO}_2(g) + \text{H}_2\text{O}(g)$  (D)  $\text{Cl}_2(g) \rightarrow 2\text{Cl}(g)$

Choose the correct answer from the options given below:

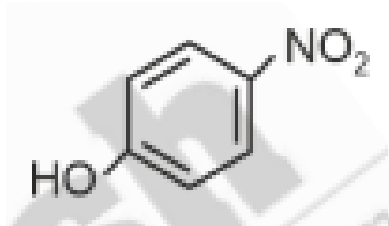
- (1) A and C
  - (2) A, B and D
  - (3) A, C and D
  - (4) C and D
- 

71. Intramolecular hydrogen bonding is present in:

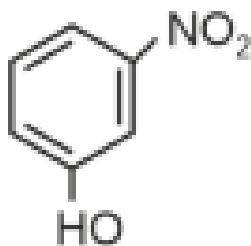
(1)



(2)



(3)



(4) HF

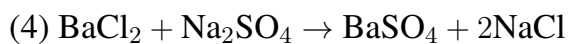
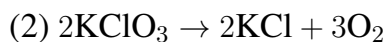
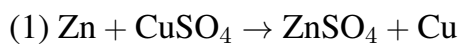
---

72. Arrange the following elements in increasing order of electronegativity: N, O, F, C, Si

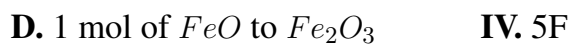
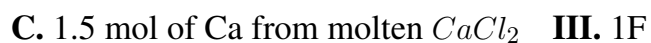
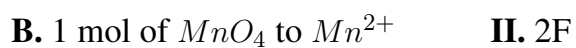
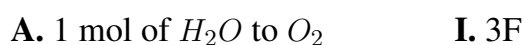
- (1) Si < C < N < O < F
- (2) Si < C < O < N < F



73. Which reaction is NOT a redox reaction?



74. Match List I with List II. List I (Conversion)      List II (Number of Faraday

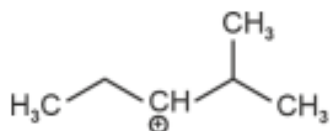


required)

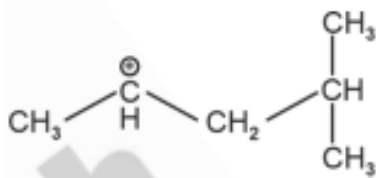
Choose the correct answer from the options given below:



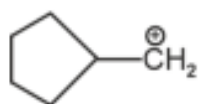
75. The most stable carbocation among the following is:



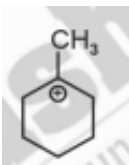
(1)



(2)



(3)



(4)

- 76. Match List I with List II. List I (Molecule)      List II (Number and types of bond/s between two carbon atoms)**
- |                           |  |
|---------------------------|--|
| A. Ethane                 | I. One $\sigma$ -bond and two $\pi$ -bonds |
| B. Ethene                 | II. Two $\pi$ -bonds                       |
| C. Carbon molecule, $C_2$ | III. One $\sigma$ -bond                    |
| D. Ethyne                 | IV. One $\sigma$ -bond and one $\pi$ -bond |

Choose the correct answer from the options given below:

- (1) A-I, B-IV, C-II, D-III
- (2) A-IV, B-III, C-II, D-I
- (3) A-III, B-IV, C-II, D-I
- (4) A-III, B-IV, C-I, D-II

**77. Among Group 16 elements, which one does NOT show -2 oxidation state?**

- (1) O
- (2) Se
- (3) Te
- (4) Po

**78. The Henry's law constant ( $K_H$ ) values of three gases (A, B, C) in water are 145,  $2 \times 10^{-5}$ , and 35 kbar, respectively. The solubility of these gases in water follow the order:**

- (1) B  $\dot{>}$  A  $\dot{>}$  C
- (2) B  $\dot{>}$  C  $\dot{>}$  A
- (3) A  $\dot{>}$  C  $\dot{>}$  B
- (4) A  $\dot{>}$  B  $\dot{>}$  C

**79. Fehling's solution 'A' is:**

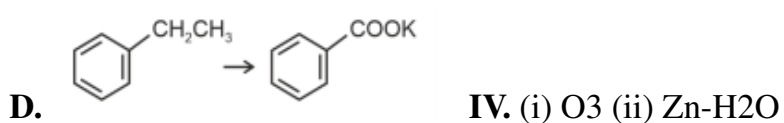
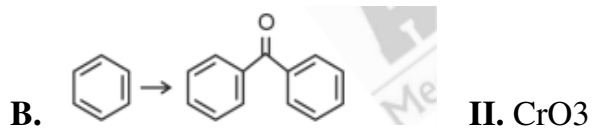
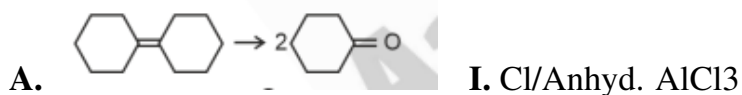
- (1) aqueous copper sulphate
- (2) alkaline copper sulphate
- (3) alkaline solution of sodium potassium tartrate (Rochelle's salt)

(4) aqueous sodium citrate

---

80. Match List I with List II.

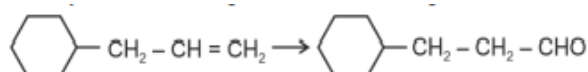
**List I (Reaction)**      **List II (Reagents/Condition)**



Choose the correct answer from the options given below:

- (1) A-IV, B-I, C-III, D-II
  - (2) A-III, B-I, C-II, D-IV
  - (3) A-IV, B-I, C-II, D-III
  - (4) A-I, B-II, C-III, D-IV
- 

81. Identify the correct reagents that would bring about the following transformation:



- (1) (i) H<sub>2</sub>O/H<sup>+</sup> (ii) Cr<sub>2</sub>O<sub>3</sub>
  - (2) (i) BH<sub>3</sub> (ii) H<sub>2</sub>O/OH<sup>-</sup> (iii) PCC
  - (3) (i) BH<sub>3</sub> (ii) alk-KMnO<sub>4</sub> (iii) H<sub>3</sub>O<sup>+</sup>
  - (4) (i) H<sub>2</sub>O/H<sup>+</sup> (ii) PCC
- 

82. Match List I with List II.

**List I (Quantum Number)**      **List II (Information provided)**

- A. m    I. Shape of orbital  
 B. ms    II. Size of orbital  
 C. l    III. Orientation of orbital  
 D. n    IV. Orientation of spin of electron

Choose the correct answer from the options given below:

- (1) A-III, B-IV, C-II, D-I  
 (2) A-III, B-I, C-II, D-IV  
 (3) A-II, B-III, C-I, D-IV  
 (4) A-II, B-I, C-IV, D-III

83. Match List I with List II.

<b>List I (Compound)</b>	<b>List II (Shape/geometry)</b>	A. NH <sub>3</sub> I. Trigonal Pyramidal B. BrF <sub>3</sub> II. Square Planar C. XeF <sub>4</sub> III. Octahedral D. SF <sub>6</sub> IV. Square Pyramidal
--------------------------	---------------------------------	---

Choose the correct answer from the options given below:

- (1) A-I, B-IV, C-II, D-III  
 (2) A-IV, B-I, C-II, D-III  
 (3) A-I, B-II, C-III, D-IV  
 (4) A-I, B-IV, C-I, D-II

84. 1 gram of sodium hydroxide was treated with 25 mL of 0.75 M HCl solution, the mass of sodium hydroxide left unreacted is equal to: (1) 750 mg

- (2) 250 mg  
 (3) Zero  
 (4) 200 mg

85. Match List I with List II. **List I (Complex)**    **List II (Type of isomerism)**

A. [Co(NH <sub>3</sub> )(NO)]Cl B. [Co(NH <sub>3</sub> )(SO)]Br C. [Co(NH <sub>3</sub> )] [Cr(CN) <sub>6</sub> ] <sup>3-</sup> D. [Co(NH <sub>3</sub> )Cl]	I. Solvate isomerism II. Linkage isomerism III. Ionization isomerism IV. Coordination isomerism
---	--

Choose the correct answer from the options given below:

- (1) A-II, B-IV, C-I, D-III
  - (2) A-III, B-IV, C-II, D-I
  - (3) A-II, B-III, C-I, D-IV
  - (4) A-III, B-IV, C-II, D-I
- 

**86.** During the preparation of Mohr's salt solution (Ferrous ammonium sulphate), which of the following acid is added to prevent hydrolysis of  $\text{Fe}^{2+}$  ion?

- (1) dilute hydrochloric acid
  - (2) concentrated sulphuric acid
  - (3) dilute nitric acid
  - (4) dilute sulphuric acid
- 

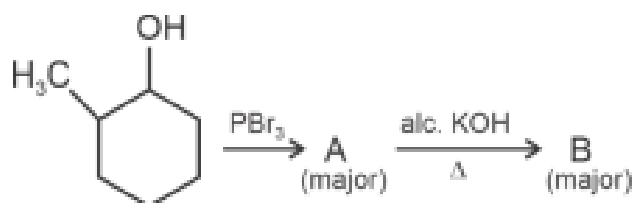
**87.** Given below are certain cations. Using Inorganic qualitative analysis, arrange them in increasing group number from 0 to VI.

- A.  $\text{Al}^{3+}$
- B.  $\text{Cu}^{2+}$
- C.  $\text{Ba}^{2+}$
- D.  $\text{Co}^{2+}$
- E.  $\text{Mg}^{2+}$

Choose the correct answer from the options given below:

- (1) B, A, D, E, C
  - (2) B, C, A, D, E
  - (3) E, C, D, B, A
  - (4) E, A, B, C, D
- 

**88.** Major products A and B formed in the following reaction sequence are:



- (1) A = CH<sub>3</sub>CH<sub>2</sub>Br, B = CH<sub>3</sub>CH<sub>2</sub>OH  
 (2) A = CH<sub>3</sub>CH<sub>2</sub>OH, B = CH<sub>3</sub>CH<sub>2</sub>Br  
 (3) A = CH<sub>3</sub>C, B = CH<sub>3</sub>C  
 (4) A = CH<sub>3</sub>CH<sub>2</sub>OH, B = CH<sub>3</sub>CO<sub>2</sub>H
- 

**89.** The pair of lanthanoid ions which are diamagnetic is:

- (1) Ce<sup>3+</sup> and Yb<sup>2+</sup>  
 (2) Ce<sup>3+</sup> and Eu<sup>2+</sup>  
 (3) Gd<sup>3+</sup> and Eu<sup>3+</sup>  
 (4) Pm<sup>3+</sup> and Sm<sup>3+</sup>
- 

**90.** Identify the correct answer. (1) Three resonance structures can be drawn for ozone

- (2) BF has non-zero dipole moment  
 (3) Dipole moment of NF is greater than that of NH  
 (4) Three canonical forms can be drawn for CO<sub>2</sub> ion
- 

**91.** A compound X contains 32% of A, 20% of B and the remaining percentage of C. Then, the empirical formula of X is:

(Given atomic masses of A = 64, B = 40, C = 32 u)

- (1) ABC  
 (2) ABC  
 (3) ABC  
 (4) ABC
- 

**92.** The work done during reversible isothermal expansion of one mole of hydrogen gas at 25°C from pressure of 20 atmosphere to 10 atmosphere is (Given  $R = 2.0 \text{ cal K}^{-1} \text{ mol}^{-1}$ )

- (1) 0 calorie
  - (2) -413.14 calories
  - (3) 413.14 calories
  - (4) 100 calories
- 

**93.** Mass in grams of copper deposited by passing 9.6487 A current through a voltmeter containing copper sulphate solution for 100 seconds is (Given: Molar mass of Cu = 63 g mol<sup>-1</sup>, 1 F = 96487 C) (1) 31.5 g

- (2) 0.315 g
  - (3) 31.5 g
  - (4) 0.0315 g
- 

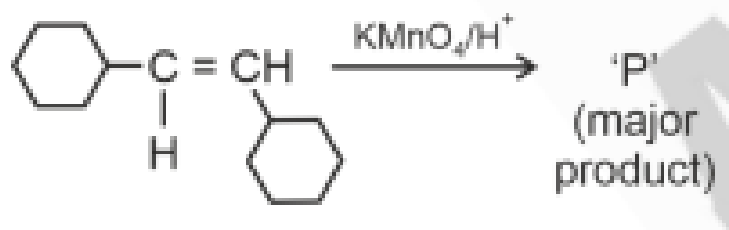
**94.** Consider the following reaction in a sealed vessel at equilibrium with concentrations of

$$N_2 = 3.0 \times 10^{-3} M, O_2 = 4.2 \times 10^{-3} M, NO = 2.8 \times 10^{-3} M$$

If 0.1 mol L<sup>-1</sup> of NO(g) is taken in a closed vessel, what will be the degree of dissociation ( $\alpha$ ) of NO(g) at equilibrium?

- (1) 0.00889
  - (2) 0.0889
  - (3) 0.8889
  - (4) 0.717
- 

**95.** For the given reaction:



'P' is:

- (1) CHO
- (2) COOH
- (3) OH

(4) O<sub>2</sub>

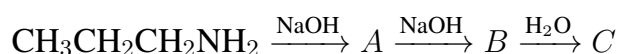
---

**96.** The rate of a reaction quadruples when temperature changes from 27°C to 57°C.

Calculate the energy of activation. Given  $R = 8.314 \text{ J K}^{-1} \text{ mol}^{-1}$ ,  $\log 4 = 0.6021$

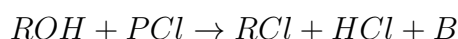
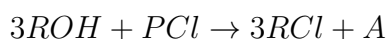
- (1) 38.04 kJ/mol
  - (2) 380.4 kJ/mol
  - (3) 3.80 kJ/mol
  - (4) 3804 kJ/mol
- 

**97.** Identify the major product C formed in the following reaction sequence:



- (1) propylamine
  - (2) butylamine
  - (3) butanamide
  - (4)  $\alpha$ -bromobutanoic acid
- 

**98.** The products A and B obtained in the following reactions, respectively, are



- (1) POCl and HPO
  - (2) POCl and HPO
  - (3) HPO and POCl
  - (4) HPO and POCl
- 

**99.** The plot of osmotic pressure ( $\Pi$ ) vs concentration ( $\text{mol L}^{-1}$ ) for a solution gives a straight line with slope  $25.73 \text{ L bar mol}^{-1}$ . The temperature at which the osmotic pressure measurement is done is (Use  $R = 0.083 \text{ L bar mol}^{-1} \text{ K}^{-1}$ )

- (1) 37°C
- (2) 310°C
- (3) 25.73°C

(4) 12.05°C

---

**100.** Given below are two statements:

- **Statement I:**  $[Co(NH)_6]^{3+}$  is a homoleptic complex whereas  $[Co(NH)_6Cl_3]^+$  is a heteroleptic complex.
- **Statement II:** Complex  $[Co(NH)_6]^{3+}$  has only one kind of ligands but  $[Co(NH)_5Cl]^{3+}$  has more than one kind of ligands.

Choose the correct answer from the options given below:

- (1) Both Statement I and Statement II are true
  - (2) Both Statement I and Statement II are false
  - (3) Statement I is true but Statement II is false
  - (4) Statement I is false but Statement II is true
- 

## BOTANY

### SECTION-A

**101.** Inhibition of Succinic dehydrogenase enzyme by malonate is a classical example of:

- (1) Cofactor inhibition
  - (2) Feedback inhibition
  - (3) Competitive inhibition
  - (4) Enzyme activation
- 

**102.** Given below are two statements:

- **Statement I:** Bt toxins are insect group specific and coded by a gene cry IAc.
- **Statement II:** Bt toxin exists as inactive protoxin in *B. thuringiensis*. However, after ingestion by the insect, the inactive protoxin gets converted into active form due to acidic pH of the insect gut.

In light of the above statements, choose the correct answer from the options given below:

- (1) Both Statement I and Statement II are true

- (2) Both Statement I and Statement II are false  
(3) Statement I is true but Statement II is false  
(4) Statement I is false but Statement II is true
- 

**103.** Match List I with List II.

	<b>A. Rhizopus</b>	<b>I. Mushroom</b>
<b>List-I (Organism)</b>	<b>B. Ustilago</b>	<b>II. Smut fungus</b>
<b>List-II (Type of fungus)</b>	<b>C. Puccinia</b>	<b>III. Bread mould</b>
	<b>D. Agaricus</b>	<b>IV. Rust fungus</b>

Choose the correct answer from the options given below:

- (1) A-I, B-II, C-IV, D-III  
(2) A-III, B-I, C-II, D-IV  
(3) A-II, B-III, C-I, D-IV  
(4) A-IV, B-III, C-II, D-I
- 

**104.** The capacity to generate a whole plant from any cell of the plant is called: (1)

Totipotency

- (2) Micropropagation  
(3) Differentiation  
(4) Somatic hybridization
- 

**105.** The equation of Verhulst-Pearl logistic growth is:

$$\frac{dN}{dt} = rN \left( \frac{K - N}{K} \right)$$

From this equation,  $K$  indicates:

- (1) Intrinsic rate of natural increase  
(2) Biotic potential  
(3) Carrying capacity  
(4) Population density
- 

**106.** Identify the set of correct statements:

- A. The flowers of Vallisneria are colourful and produce nectar.

- B. The flowers of water lily are not pollinated by water.
- C. In most of water-pollinated species, the pollen grains are protected from wetting.
- D. Pollen grains of some hydrophytes are long and ribbon like.
- E. In some hydrophytes, the pollen grains are carried passively inside water.

Choose the correct answer from the options given below:

- (1) C, D and E only
- (2) A, B, C and D only
- (3) A, C, D and E only
- (4) B, C, D and E only

**107.** Match List I with List II.

**List I (Term)      List II (Description)**

**A.** Two or more alternative forms of a gene

**I.** Back cross

**B.** Cross of F progeny with homozygous recessive parent

**II.** Ploidy

**C.** Cross of F progeny with any of the parents

**III.** Allele

**D.** Number of chromosome sets in plant

**IV.** Test cross

Choose the correct answer from the options given below:

- (1) A-III, B-II, C-IV, D-I
- (2) A-II, B-I, C-III, D-IV
- (3) A-III, B-IV, C-II, D-I
- (4) A-IV, B-III, C-II, D-I

**108.** A pink flowered Snapdragon plant was crossed with a red flowered Snapdragon plant.

What type of phenotypes/ies are expected in the progeny?

- (1) Only red flowered plants
- (2) Red flowered as well as pink flowered plants
- (3) Only pink flowered plants
- (4) Red, Pink as well as white flowered plants

**109.** Given below are two statements:

- **Statement I:** Chromosomes become gradually visible under light microscope during leptotene stage.
- **Statement II:** The beginning of diplotene stage is recognized by dissolution of synaptonemal complex.

In light of the above statements, choose the correct answer from the options given below:

- (1) Both Statement I and Statement II are true
  - (2) Both Statement I and Statement II are false
  - (3) Statement I is true but Statement II is false
  - (4) Statement I is false but Statement II is true
- 

**110.** The lactose present in the growth medium of bacteria is transported to the cell by the action of: (1) Beta-galactosidase

- (2) Acetylase
  - (3) Permease
  - (4) Polymerase
- 

**111.** These are regarded as major causes of biodiversity loss:

- A. Over exploitation
- B. Co-extinction
- C. Mutation
- D. Habitat loss and fragmentation
- E. Migration

Choose the correct option: (1) A, C and D only

- (2) A, B, C and D only
  - (3) A, B and E only
  - (4) A, B and D only
- 

**112.** Bulliform cells are responsible for: (1) Inward curling of leaves in monocots

- (2) Protecting the plant from salt stress

- (3) Increased photosynthesis in monocots
  - (4) Providing large spaces for storage of sugars
- 

**113.** Which of the following is an example of actinomorphic flower?

- (1) Datura
  - (2) Cassia
  - (3) Pisum
  - (4) Sesbania
- 

**114.** In a plant, black seed color (BB/Bb) is dominant over white seed color (bb). In order to find out the genotype of the black seed plant, with which of the following genotype will you cross it?

- (1) BB
  - (2) bb
  - (3) Bb
  - (4) BB/Bb
- 

**115.** Which one of the following can be explained on the basis of Mendel's Law of Dominance?

- A. Out of one pair of factors one is dominant and the other is recessive.
- B. Alleles do not show any expression and both the characters appear as such in F generation.
- C. Factors occur in pairs in normal diploid plants.
- D. The discrete unit controlling a particular character is called factor.
- E. The expression of only one of the parental characters is found in a monohybrid cross.

Choose the correct answer from the options given below:

- (1) A, B and C only
- (2) A, C, D and E only
- (3) B, C and D only
- (4) A, B, C, D and E

---

**116.** Formation of interfascicular cambium from fully developed parenchyma cells is an example for: (1) Differentiation

(2) Redifferentiation

(3) Dedifferentiation

(4) Maturation

---

**117.** The type of conservation in which the threatened species are taken out from their natural habitat and placed in special setting where they can be protected and given special care is called: (1) in-situ conservation

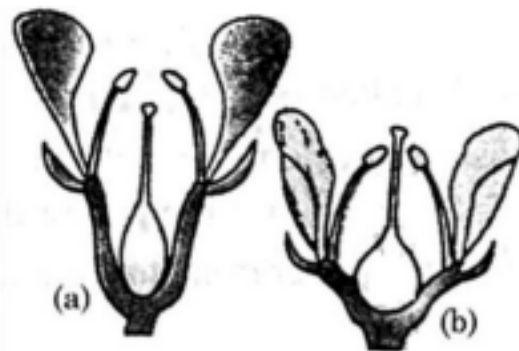
(2) Biodiversity conservation

(3) Semi-conservative method

(4) Sustainable development

---

**118.** Identify the type of flowers based on the position of calyx, corolla and androecium with respect to the ovary from the given figures (a) and (b).



(1) (a) Epigynous; (b) Hypogynous

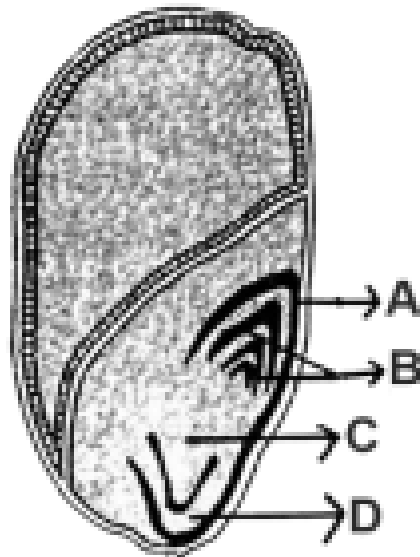
(2) (a) Hypogynous; (b) Epigynous

(3) (a) Perigynous; (b) Epigynous

(4) (a) Perigynous; (b) Perigynous

---

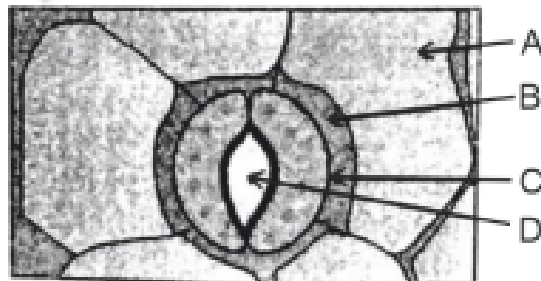
**119.** Identify the part of the seed from the given figure which is destined to form root when the seed germinates.



- (1) A
- (2) B
- (3) C
- (4) D

**120.** Auxin is used by gardeners to prepare weed-free lawns. But no damage is caused to grass as auxin: (1) promotes apical dominance  
 (2) promotes abscission of mature leaves only  
 (3) does not affect mature monocotyledonous plants  
 (4) can help in cell division in grasses, to produce growth

**121.** In the given figure, which component has thin outer walls and highly thickened inner walls?



- (1) C
- (2) D

(3) A

(4) B

---

**122.** How many molecules of ATP and NADPH are required for every molecule of CO fixed in the Calvin cycle?

(1) 2 molecules of ATP and 3 molecules of NADPH

(2) 2 molecules of ATP and 2 molecules of NADPH

(3) 3 molecules of ATP and 3 molecules of NADPH

(4) 3 molecules of ATP and 2 molecules of NADPH

---

**123.** Tropical regions show greatest level of species richness because:

- A. Tropical latitudes have remained relatively undisturbed for millions of years, hence more time was available for species diversification.
- B. Tropical environments are more seasonal.
- C. More solar energy is available in tropics.
- D. Constant environments promote niche specialization.
- E. Tropical environments are constant and predictable.

Choose the correct answer from the options given below:

(1) A, C, D and E only

(2) A and B only

(3) A, B and E only

(4) A, B and D only

---

**124.** The cofactor of the enzyme carboxypeptidase is:

(1) Zinc

(2) Niacin

(3) Flavin

(4) Haem

---

**125.** Which of the following are required for the dark reaction of photosynthesis?

- A. Light
- B. Chlorophyll
- C. CO
- D. ATP
- E. NADPH

Choose the correct answer from the options given below:

- (1) A, B and C only
- (2) B, C and D only
- (3) C, D and E only
- (4) D and E only

**126.** A transcription unit in DNA is defined primarily by the three regions in DNA and these are with respect to upstream and downstream end; (1) Repressor, Operator gene, Structural gene

- (2) Structural gene, Transposons, Operator gene
- (3) Inducer, Repressor, Structural gene
- (4) Promotor, Structural gene, Terminator

**127.** Match List I with List II.

		<b>A.</b> Clostridium butylicum	<b>I.</b> Ethanol
<b>List I (Organism)</b>	<b>List II (Product)</b>	<b>B.</b> Saccharomyces cerevisiae	<b>II.</b> Streptokinase
		<b>C.</b> Trichoderma polysporum	<b>III.</b> Butyric acid
		<b>D.</b> Streptococcus sp.	<b>IV.</b> Cyclosporin-A

Choose the correct answer from the options given below:

- (1) A-III, B-I, C-II, D-IV
- (2) A-II, B-I, C-III, D-I
- (3) A-III, B-I, C-IV, D-II
- (4) A-IV, B-I, C-III, D-II

**128.** Match List I with List II.

<b>List I (Organism)</b>	<b>List II (Function)</b>
A. Nucleolus	I. Site of formation of glycolipid
B. Centriole	II. Organization like the cartwheel
C. Leucoplasts	III. Site for active ribosomal RNA synthesis
D. Golgi apparatus	IV. For storing nutrients

Choose the correct answer from the options given below:

- (1) A-III, B-II, C-IV, D-I
- (2) A-II, B-I, C-III, D-IV
- (3) A-I, B-II, C-IV, D-III
- (4) A-I, B-IV, C-II, D-III

**129.** What is the fate of a piece of DNA carrying only gene of interest which is transferred into an alien organism?

- A. The piece of DNA would be able to multiply itself independently in the progeny cells of the organism.
- B. It may get integrated into the genome of the recipient.
- C. It may multiply and be inherited along with the host DNA.
- D. The alien piece of DNA is not an integral part of chromosome.
- E. It shows ability to replicate.

Choose the correct answer from the options given below:

- (1) A and B only
- (2) D and E only
- (3) B and C only
- (4) A and E only

**130.** Spindle fibers attach to kinetochores of chromosomes during:

- (1) Prophase
- (2) Metaphase
- (3) Anaphase
- (4) Telophase

---

**131.** Lecithin, a small molecular weight organic compound found in living tissues, is an example of:

- (1) Amino acids
  - (2) Phospholipids
  - (3) Glycerides
  - (4) Carbohydrates
- 

**132.** Hind II always cuts DNA molecules at a particular point called recognition sequence and it consists of:

- (1) 8 bp
  - (2) 6 bp
  - (3) 4 bp
  - (4) 10 bp
- 

**133.** Given below are two statements:

- **Statement I:** Parenchyma is living but collenchyma is dead tissue.
- **Statement II:** Gymnosperms lack xylem vessels but presence of xylem vessels is the characteristic of angiosperms.

Choose the correct answer from the options given below:

- (1) Both Statement I and Statement II are true
  - (2) Both Statement I and Statement II are false
  - (3) Statement I is true but Statement II is false
  - (4) Statement I is false but Statement II is true
- 

**134.** List of endangered species was released by:

- (1) GEAC
  - (2) WWF
  - (3) FOAM
  - (4) IUCN
-

**135.** Which one of the following is **not** a criterion for classification of fungi?

- (1) Morphology of mycelium
  - (2) Mode of nutrition
  - (3) Mode of spore formation
  - (4) Fruiting body
- 

### SECTION-B

**136.** The DNA present in chloroplast is:

- (1) Linear, double stranded
  - (2) Circular, double stranded
  - (3) Linear, single stranded
  - (4) Circular, single stranded
- 

**137.** Match List I with List II.

**List I**

**List II**

<b>A.</b> Citric acid cycle	<b>I.</b> Cytoplasm
<b>B.</b> Glycolysis	<b>II.</b> Mitochondrial matrix
<b>C.</b> Electron transport system	<b>III.</b> Intermembrane space of mitochondria
<b>D.</b> Proton gradient	<b>IV.</b> Inner mitochondrial membrane

Choose the correct answer from the options given below:

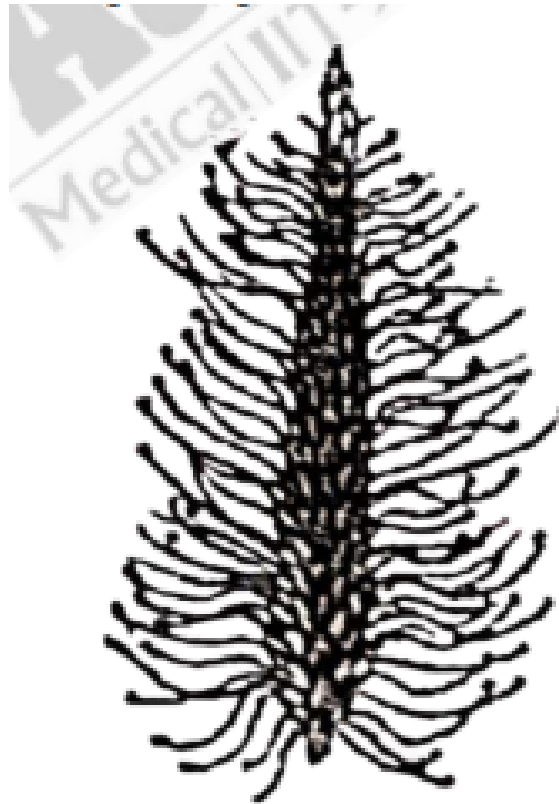
- (1) A-II, B-III, C-IV, D-I
  - (2) A-II, B-I, C-III, D-IV
  - (3) A-III, B-IV, C-II, D-I
  - (4) A-IV, B-II, C-I, D-III
- 

**138.** Identify the step in tricarboxylic acid cycle, which does not involve oxidation of substrate.

- (1) Malic acid → Oxaloacetic acid
- (2) Succinic acid → Malic acid
- (3) Succinyl-CoA → Succinic acid
- (4) Isocitrate →  $\alpha$ -ketoglutaric acid

---

**139.** Identify the correct description about the given figure:



Choose the correct answer from the options given below:

- (1) Wind pollinated plant inflorescence showing flowers with well-exposed stamens.
- (2) Water pollinated flowers showing stamens with mucilaginous covering.
- (3) Cleistogamous flowers showing autogamy.
- (4) Compact inflorescence showing complete autogamy.

---

**140.** Spraying sugarcane crop with which of the following plant growth regulators, increases the length of stem, thus, increasing the yield?

Choose the correct answer from the options given below:

- (1) Auxin
- (2) Gibberellin
- (3) Cytokinin
- (4) Abscisic acid

---

**141.** In an ecosystem if the Net Primary Productivity (NPP) of first trophic level is 100x

(kcal m<sup>-2</sup> yr<sup>-1</sup>), what would be the GPP (Gross Primary Productivity) of the third trophic level of the same ecosystem?

Choose the correct answer from the options given below:

- (1)  $\frac{x}{10}$  (kcal m<sup>-2</sup> yr<sup>-1</sup>)
  - (2) x (kcal m<sup>-2</sup> yr<sup>-1</sup>)
  - (3) 10x (kcal m<sup>-2</sup> yr<sup>-1</sup>)
  - (4)  $\frac{100x}{3}$  (kcal m<sup>-2</sup> yr<sup>-1</sup>)
- 

**142.** Which of the following statement is correct regarding the process of replication in *E. coli*?

Choose the correct answer from the options given below:

- (1) The DNA dependent DNA polymerase catalyzes polymerization in one direction that is 3' → 5'.
  - (2) The DNA dependent RNA polymerase catalyzes polymerization in one direction, that is 5' → 3'.
  - (3) The DNA dependent DNA polymerase catalyzes polymerization in 5' → 3' as well as 3' → 5' direction.
  - (4) The DNA dependent RNA polymerase catalyzes polymerization in 5' → 3' direction.
- 

**143.** Which of the following are fused in somatic hybridization involving two varieties of plants?

Choose the correct answer from the options given below:

- (1) Callus
  - (2) Somatic embryos
  - (3) Protoplasts
  - (4) Pollens
-

144. Match List I with List II.

List I	List II
A. Rose	I. Twisted aestivation
B. Pea	II. Perigynous flower
C. Cotton	III. Drupe
D. Mango	IV. Marginal placentation

Choose the correct answer from the options given below:

- (1) A-II, B-III, C-I, D-III
  - (2) A-I, B-II, C-III, D-IV
  - (3) A-I, B-II, C-III, D-I
  - (4) A-II, B-III, C-IV, D-I
- 

145. Match List I with List II.

List I	List II
A. Frederick Griffith	I. Genetic code
B. Francois Jacob	II. Semi-conservative mode of DNA replication
C. Har Gobind Khorana	III. Transformation
D. Meselson	Stahl
IV. Lac operon	

Choose the correct answer from the options given below:

- (1) A-III, B-II, C-I, D-IV
  - (2) A-II, B-I, C-IV, D-III
  - (3) A-I, B-III, C-IV, D-II
  - (4) A-IV, B-I, C-II, D-III
- 

146. Match List I with List II.

List I	List II
A. GLUT-4	I. Hormone
B. Insulin	II. Enzyme
C. Trypsin	III. Intercellular ground substance
D. Collagen	IV. Enables glucose transport into cells

Choose the correct answer from the options given below:

- (1) A-IV, B-II, C-III, D-I

- (2) A-I, B-II, C-IV, D-III  
 (3) A-II, B-I, C-III, D-IV  
 (4) A-III, B-IV, C-II, D-I

**147.** Match List I with List II.

List I	List II
A. Robert May	I. Species-Area relationship
B. Alexander von Humboldt	II. Long term ecosystem experiment using out door plots
C. Paul Ehrlich	III. Global species diversity at about 7 million
D. David Tilman	IV. Rivet popper hypothesis

Choose the correct answer from the options given below:

- (1) A-I, B-III, C-I, D-IV  
 (2) A-III, B-I, C-IV, D-II  
 (3) A-I, B-II, C-III, D-IV  
 (4) A-III, B-IV, C-II, D-I

**148.** Given below are two statements:

- Statement I: In  $C_3$  plants, some  $O_2$  binds to RuBisCO, hence  $CO_2$  fixation is decreased.
- Statement II: In  $C_4$  plants, mesophyll cells show very little photorespiration while bundle sheath cells do not show photorespiration.

Choose the correct answer from the options given below:

- (1) Both Statement I and Statement II are true  
 (2) Both Statement I and Statement II are false  
 (3) Statement I is true but Statement II is false  
 (4) Statement I is false but Statement II is true

**149.** Match List I with List II.

List I (Types of Stamens)	List II (Example)
A. Monoadelphous	I. Citrus
B. Diadelphous	II. Pea
C. Polyadelphous	III. Lily
D. Epiphyllous	IV. China-rose

Choose the correct answer from the options given below:

- (1) A-IV, B-II, C-I, D-III
- (2) A-IV, B-I, C-II, D-III
- (3) A-I, B-II, C-IV, D-III
- (4) A-III, B-I, C-IV, D-II

**150.** Read the following statements and choose the set of correct statements: In the members of Phaeophyceae,

- A. Asexual reproduction occurs usually by biflagellate zoospores.
- B. Sexual reproduction is by oogamous method only.
- C. Stored food is in the form of carbohydrates which is either mannitol or laminarin.
- D. The major pigments found are chlorophyll a, c and carotenoids and xanthophyll.
- E. Vegetative cells have a cellulose wall, usually covered on the outside by gelatinous coating of algin.

Choose the correct answer from the options given below:

- (1) A, B, C and D only
- (2) B, C, D and E only
- (3) A, B, C and E only
- (4) A, B, C and E only

151. Match List I with List II:

List I	List II
A. Cocaine	I. Effective sedative in surgery
B. Heroin	II. Cannabis sativa
C. Morphine	III. Erythroxyllum
D. Marijuana	IV. Papaver somniferum

Choose the correct answer from the options given below:

- (1) A-I, B-III, C-I, D-II
  - (2) A-III, B-II, C-I, D-IV
  - (3) A-I, B-II, C-IV, D-III
  - (4) A-I, B-III, C-II, D-IV
- 

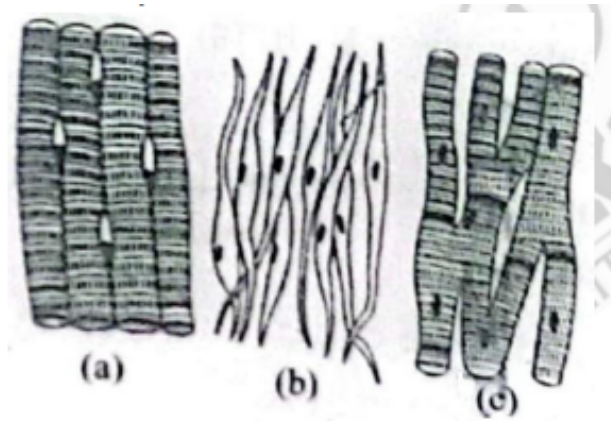
152. Match List I with List II:

List I	List II
A. Down's syndrome	I. 11 <sup>th</sup> chromosome
B. $\alpha$ -Thalassemia	II. X <sup>+</sup> chromosome
C. $\beta$ -Thalassemia	III. 21 <sup>st</sup> chromosome
D. Klinefelter's syndrome	IV. 16 <sup>th</sup> chromosome

Choose the correct answer from the options given below:

- (1) A-I, B-II, C-III, D-IV
  - (2) A-II, B-I, C-IV, D-III
  - (3) A-III, B-II, C-I, D-IV
  - (4) A-IV, B-I, C-II, D-III
- 

153. Three types of muscles are given as a, b and c. Identify the correct matching pair along with their location in the human body:



Choose the correct answer from the options given below:

- (1) (a) Smooth - Toes, (b) Skeletal - Legs, (c) Cardiac - Heart
- (2) (a) Skeletal - Triceps, (b) Smooth - Stomach, (c) Cardiac - Heart
- (3) (a) Skeletal - Biceps, (b) Involuntary - Intestine, (c) Smooth - Heart
- (4) (a) Involuntary - Nose tip, (b) Skeletal - Bone, (c) Cardiac - Heart

**154.** Match List I with List II:

List I	List II
A. Pterophyllum	I. Hag fish
B. Myxine	II. Saw fish
C. Pristis	III. Angel fish
D. Exocoetus	IV. Flying fish

Choose the correct answer from the options given below:

- (1) A-II, B-III, C-I, D-IV
- (2) A-III, B-I, C-II, D-IV
- (3) A-IV, B-II, C-III, D-I
- (4) A-II, B-I, C-IV, D-III

**155.** Which of the following is not a component of the Fallopian tube?

- (1) Uterine fundus
- (2) Isthmus
- (3) Infundibulum
- (4) Ampulla

List I	List II
A. Pleurobrachia	I. Mollusca
B. Radula	II. Ctenophora
C. Stomachord	III. Osteichthyes
D. Air bladder	IV. Hemichordata

156. Match List I with List II:

Choose the correct answer from the options given below:

- (1) A-IV, B-II, C-III, D-I
- (2) A-II, B-I, C-IV, D-III
- (3) A-II, B-IV, C-I, D-III
- (4) A-IV, B-I, C-II, D-III

157. Which of the following are Autoimmune disorders?

- A. Myasthenia gravis
- B. Rheumatoid arthritis
- C. Gout
- D. Muscular dystrophy
- E. Systemic Lupus Erythematosus (SLE)

Choose the most appropriate answer from the options given below:

- (1) A, B D only
- (2) B, C E only
- (3) A, B, C E only
- (4) A, B, C D only

158.

Given below are two statements:

**Statement I:** In the nephron, the descending limb of loop of Henle is impermeable to water and permeable to electrolytes.

**Statement II:** The proximal convoluted tubule is lined by simple columnar brush border epithelium and increases the surface area for reabsorption.

In the light of the above statements, choose the correct answer from the options given below:

- (1) Both Statement I and Statement II are true

- (2) Both Statement I and Statement II are false
  - (3) Statement I is true but Statement II is false
  - (4) Statement I is false but Statement II is true
- 

**159.** Which of the following is not a steroid hormone?

- (1) Cortisol
  - (2) Testosterone
  - (3) Progesterone
  - (4) Glucagon
- 

**160.** Given below are two statements:

**Statement I:** The presence or absence of hymen is not a reliable indicator of virginity.

**Statement II:** The hymen is torn during the first coitus only.

In the light of the above statements, choose the correct answer from the options given below:

- (1) Both Statement I and Statement II are true
  - (2) Both Statement I and Statement II are false
  - (3) Statement I is true but Statement II is false
  - (4) Statement I is false but Statement II is true
- 

**161.**

Which of the following factors are favourable for the formation of oxyhaemoglobin in alveoli?

- (1) High pO<sub>2</sub> and High pCO<sub>2</sub>
  - (2) High pO<sub>2</sub> and Lesser H<sup>+</sup> concentration
  - (3) Low pCO<sub>2</sub> and High H<sup>+</sup> concentration
  - (4) Low pCO<sub>2</sub> and High temperature
- 

**162.**

Match List I with List II:

<b>List I</b>	<b>List II</b>
A. Axoneme	I. Centriole
B. Cartwheel pattern	II. Cilia and flagella
C. Crista	III. Chromosome
D. Satellite	IV. Mitochondria

Choose the correct answer from the options given below:

- (1) A-IV, B-II, C-I, D-III
  - (2) A-II, B-I, C-IV, D-III
  - (3) A-III, B-IV, C-II, D-I
  - (4) A-IV, B-III, C-II, D-I
- 

**163.**

The flippers of the Penguins and Dolphins are the example of:

- (1) Adaptive radiation
  - (2) Natural selection
  - (3) Convergent evolution
  - (4) Divergent evolution
- 

**164.** Given below are some stages of human evolution. Arrange them in correct sequence.

(Past to Recent)

A. Homo habilis    B. Homo sapiens    C. Homo neanderthalensis    D. Homo erectus

Choose the correct sequence of human evolution from the options given below:

- (1) D-A-C-B
  - (2) B-A-D-C
  - (3) C-B-D-A
  - (4) A-D-C-B
- 

**165.** In both sexes of cockroach, a pair of jointed filamentous structures called anal cerci are present on

- (1) 5<sup>th</sup> segment    (2) 10<sup>th</sup> segment    (3) 8<sup>th</sup> and 9<sup>th</sup> segment    (4) 11<sup>th</sup> segment

Choose the correct answer from the options given below:

- (1) 5<sup>th</sup> segment
  - (2) 10<sup>th</sup> segment
  - (3) 8<sup>th</sup> and 9<sup>th</sup> segment
  - (4) 11<sup>th</sup> segment
- 

**166.** Which of the following statements is incorrect?

- (1) A bio-reactor provides optimal growth conditions for achieving the desired product
- (2) Most commonly used bio-reactors are of stirring type
- (3) Bio-reactors are used to produce small scale bacterial cultures
- (4) Bio-reactors have an agitator system, an oxygen delivery system and foam control system

Choose the correct answer from the options given below:

- (1) A bio-reactor provides optimal growth conditions for achieving the desired product
  - (2) Most commonly used bio-reactors are of stirring type
  - (3) Bio-reactors are used to produce small scale bacterial cultures
  - (4) Bio-reactors have an agitator system, an oxygen delivery system and foam control system
- 

**167.** Match List I with List II:

List I    List II

- |                  |               |
|------------------|---------------|
| A. Typhoid       | I. Fungus     |
| B. Leishmaniasis | II. Nematode  |
| C. Ringworm      | III. Protozoa |
| D. Filariasis    | IV. Bacteria  |

Choose the correct answer from the options given below:

- (1) A-I, B-III, C-II, D-IV
  - (2) A-IV, B-III, C-I, D-II
  - (3) A-III, B-I, C-IV, D-II
  - (4) A-II, B-IV, C-III, D-I
- 

**168.** Consider the following statements:

- A. Annelids are true coelomates
- B. Poriferans are pseudocoelomates

- C. Aschelminthes are acoelomates
- D. Platyhelminthes are pseudocoelomates

Choose the correct answer from the options given below:

- (1) B only
  - (2) A only
  - (3) C only
  - (4) D only
- 

**169.** Which of the following is not a natural/traditional contraceptive method?

- (1) Coitus interruptus
- (2) Periodic abstinence
- (3) Lactational amenorrhea
- (4) Vaults

Choose the correct answer from the options given below:

- (1) Coitus interruptus
  - (2) Periodic abstinence
  - (3) Lactational amenorrhea
  - (4) Vaults
- 

**170.** Match List I with List II:

List I    List II

- A. Pons    I. Provides additional space for Neurons, regulates posture and balance.
- B. Hypothalamus    II. Controls respiration and gastric secretions.
- C. Medulla    III. Connects different regions of the brain.
- D. Cerebellum    IV. Neuro secretory cells

Choose the correct answer from the options given below:

- (1) A-II, B-III, C-I, D-IV
  - (2) A-III, B-IV, C-II, D-I
  - (3) A-II, B-III, C-IV, D-I
  - (4) A-II, B-I, C-III, D-IV
- 

**171.** Which of the following factors will not affect the Hardy-Weinberg equilibrium?

- (1) Genetic recombination
- (2) Genetic drift
- (3) Gene migration
- (4) Constant gene pool

Choose the correct answer from the options given below:

- (1) Genetic recombination
  - (2) Genetic drift
  - (3) Gene migration
  - (4) Constant gene pool
- 

**172.** Match List I with List II:

List I    List II

- A. – I antitrypsin    I. Cotton bollworm
- B. Cry IAb    II. ADA deficiency
- C. Cry IAc    III. Emphysema
- D. Enzyme replacement therapy    IV. Corn borer

Choose the correct answer from the options given below:

- (1) A-II, B-III, C-IV, D-I
  - (2) A-II, B-I, C-II, D-IV
  - (3) A-III, B-IV, C-I, D-II
  - (4) A-II, B-IV, C-I, D-III
- 

**173.** Following are the stages of pathway for conduction of an action potential through the heart:

- A. AV bundle    B. Purkinje fibres    C. AV node    D. Bundle branches    E. SA node

Choose the correct sequence of pathway from the options given below:

- (1) E-C-A-D-B
  - (2) A-E-C-B-D
  - (3) B-D-E-C-A
  - (4) E-A-C-B-D
- 

**174.** The “Ti plasmid” of \*Agrobacterium tumefaciens\* stands for:

- (1) Tumour inhibiting plasmid    (2) Tumor independent plasmid    (3) Tumor inducing plasmid
- (4) Temperature independent plasmid

Choose the correct answer from the options given below:

- (1) Tumour inhibiting plasmid
  - (2) Tumor independent plasmid
  - (3) Tumor inducing plasmid
  - (4) Temperature independent plasmid
- 

**175.** Match List I with List II:

List I    List II

- A. Expiratory capacity    I. Expiratory reserve volume + Tidal volume + Inspiratory reserve volume.
- B. Functional residual capacity    II. Tidal volume + Expiratory reserve volume.
- C. Vital capacity    III. Tidal volume + Inspiratory reserve volume.
- D. Inspiratory capacity    IV. Expiratory reserve volume + Residual volume

Choose the correct answer from the options given below:

- (1) A-II, B-IV, C-I, D-III
  - (2) A-III, B-II, C-IV, D-I
  - (3) A-II, B-I, C-IV, D-III
  - (4) A-I, B-III, C-II, D-IV
- 

**176.** Following are the stages of cell division:

- A. Gap 2 phase    B. Cytokinesis    C. Synthesis phase    D. Karyokinesis

Choose the correct sequence of stages from the options given below:

- (1) C-E-D-A-B
  - (2) E-B-D-A-C
  - (3) B-D-E-A-C
  - (4) E-C-A-D-B
- 

**177.** Match List I with List II:

List I    List II

- A. Fibrous joints    I. Adjacent vertebrae, limited movement
- B. Cartilaginous joints    II. Humerus and Pectoral girdle, rotational movement
- C. Hinge joints    III. Skull, don't allow any movement

D. Ball and socket joints      IV. Knee, help in locomotion

Choose the correct answer from the options given below:

- (1) A-IV, B-II, C-II, D-I
  - (2) A-II, B-III, C-I, D-IV
  - (3) A-III, B-I, C-IV, D-II
  - (4) A-II, B-IV, C-I, D-III
- 

**178.** Given below are two statements: one is labelled as Assertion A and the other is labelled as Reason R:

Assertion A: FSH acts upon ovarian follicles in female and Leydig cells in male.

Reason R: Growing ovarian follicles secrete estrogen in female while interstitial cells secrete androgen in male human being.

In the light of the above statements, choose the correct answer from the options given below:

- (1) Both A and R are true and R is the correct explanation of A
  - (2) Both A and R are true but R is NOT the correct explanation of A
  - (3) A is true but R is false
  - (4) A is false but R is true
- 

**179.** Match List I with List II:

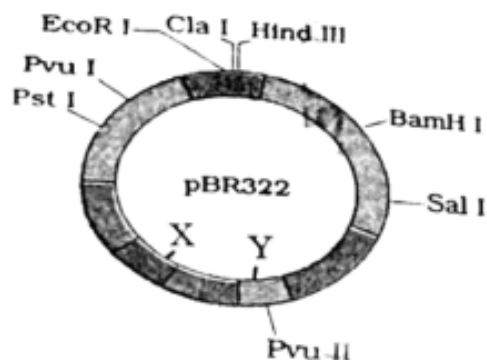
List I (Sub Phases of Prophase I)	List II (Specific Characters)
A. Diakinesis	I. Synaptonemal complex formation
B. Pachytene	II. Completion of terminalisation of chiasmata
C. Zygotene	III. Chromosomes look like thin threads
D. Leptotene	IV. Appearance of recombination nodules

Choose the correct answer from the options given below:

- (1) A-IV, B-II, C-III, D-I
  - (2) A-I, B-II, C-IV, D-III
  - (3) A-II, B-I, C-I, D-III
  - (4) A-I, B-III, C-II, D-IV
- 

**180.** The following diagram showing restriction sites in *E. coli* cloning vector pBR322.

Find the role of 'X' and 'Y' genes:



- (1) The gene 'X' is responsible for resistance to antibiotics and 'Y' for protein involved in the replication of Plasmid.
- (2) The gene 'X' is responsible for controlling the copy number of the linked DNA and 'Y' for protein involved in the replication of Plasmid.
- (3) The gene 'X' is for protein involved in replication of Plasmid and 'Y' for resistance to antibiotics.
- (4) Gene 'X' is responsible for recognition sites and 'Y' is responsible for antibiotic resistance.

**181.** Match List I with List II:

List I	List II
A. Common cold	I. Plasmodium
B. Haemozoin	II. Typhoid
C. Widal test	III. Rhinoviruses
D. Allergy	IV. Dust mites

Choose the correct answer from the options given below:

- (1) A-I, B-III, C-II, D-IV
- (2) A-II, B-III, C-I, D-II
- (3) A-III, B-II, C-IV, D-I
- (4) A-II, B-IV, C-I, D-III

**182.** Match List I with List II:

List I	List II
A. Non-medicated IUD	I. Multiload 375
B. Copper releasing IUD	II. Progestogens
C. Hormone releasing IUD	III. Lippes loop
D. Implants	IV. LNG-20

Choose the correct answer from the option given below:

- (1) A-III, B-II, C-II, D-IV
- (2) A-I, B-III, C-IV, D-II
- (3) A-IV, B-II, C-III, D-I
- (4) A-III, B-I, C-IV, D-II

**183.** Given below are two statements: One is labelled as Assertion A and the other is labelled as Reason R: Assertion A : Breast-feeding during the initial period of infant growth is recommended by doctors for bringing a healthy baby. Reason R : Colostrum contains several antibodies absolutely essential to develop resistance for the new born baby.

In the light of the above statements, choose the most appropriate answer from the options given below:

- (1) Both A and R are correct and R is the correct explanation of A
- (2) Both A and R are correct but R is NOT the correct explanation of A
- (3) A is correct but R is not correct
- (4) A is not correct but R is correct

**184.** Match List I with List II:

List I	List II
A. Lipase	I. Peptide bond
B. Nuclease	II. Ester bond
C. Protease	III. Glycosidic bond
D. Amylase	IV. Phosphodiester bond

Choose the correct answer from the options given below:

- (1) A-IV, B-II, C-III, D-I
- (2) A-III, B-II, C-I, D-IV
- (3) A-II, B-IV, C-I, D-III

(4) A-I, B-III, C-IV, D-II

**185.** Which one is the correct product of DNA dependent RNA polymerase to the given template?

3' TACATGGCAATACCTATC5'

- (1) 5' AUGUCCGUUAUAGGUA AUG3'
- (2) 5' AUUGCCGGUAAAAGGUA AUG3'
- (3) 5' AUGUACGGUAUAGGAUA AUG3'
- (4) 5' AUGTACGTTTATAGTGTAG3'

**186.** Match List I with List II related to digestive system of cockroach:

List I	List II
A. The structures used for storing food	I. Gizzard
B. Ring of 6-8 blind tubules at junction of foregut and midgut.	II. Gastric C
C. Ring of 100-150 yellow coloured thin filaments at junction of midgut and hindgut.	III. Malpighian
D. The structures used for grinding the food.	IV. Crop

Choose the correct answer from the options given below:

- (1) A-IV, B-II, C-III, D-I
- (2) A-II, B-III, C-IV, D-I
- (3) A-III, B-IV, C-II, D-I
- (4) A-I, B-II, C-IV, D-I

**187.** Match List I with List II:

List I	List II
A. RNA polymerase III	I. snRNPs
B. Termination of transcription II. Promotor	III. Rho factor
C. Splicing of Exons	IV. SnRNAs, tRNA
D. TATA box	

Choose the correct answer from the options given below:

- (1) A-II, B-III, C-II, D-IV
- (2) A-I, B-II, C-IV, D-I
- (3) A-III, B-IV, C-I, D-II

(4) A-IV, B-I, C-II, D-III

---

**188.** The following are the statements about non-chordates: A. Pharynx is perforated by gill slits.

B. Notochord is absent.

C. Central nervous system is dorsal.

D. Heart is dorsal if present.

E. Post-anal tail is absent.

Choose the most appropriate answer from the options given below:

(1) A C only

(2) A, B D only

(3) B, D C only

(4) B, C D only

---

**189.** Match List I with List II:

List I	List II
A. Exophthalmic goiter hyperglycemia.	I. Excess secretion of cortisol, moon face
B. Acromegaly	II. Hypo-secretion of thyroid hormone and stunted growth.
C. Cushing's syndrome protruding eye balls.	III. Hyper secretion of thyroid hormone
D. Cretinism	IV. Excessive secretion of growth hormone.

Choose the correct answer from the options given below:

(1) A-IV, B-II, C-III, D-I

(2) A-I, B-III, C-IV, D-II

(3) A-III, B-IV, C-II, D-I

(4) A-I, B-IV, C-II, D-III

---

**190.** Given below are two statements:

Statement I: Mitochondria and chloroplasts both double membranes bound organelles.

Statement II: Inner membrane of mitochondria is relatively less permeable, as compared chloroplast.

In the light of the above statements, choose the most appropriate answer from the options given below:

- (1) Both Statement I and Statement II are correct.
  - (2) Both Statement I and Statement II are incorrect.
  - (3) Statement I is correct but Statement II is incorrect.
  - (4) Statement I is incorrect but Statement II is correct.
- 

**191.** Given below are two statements:

Statement I: The cerebral hemispheres are connected by nerve tract known as corpus callosum.

Statement II: The brain stem consists of the medulla oblongata, pons and cerebrum.

In the light of the above statements, choose the most appropriate answer from the options given below:

- (1) Both Statement I and Statement II are correct.
  - (2) Both Statement I and Statement II are incorrect.
  - (3) Statement I is correct but Statement II is incorrect.
  - (4) Statement I is incorrect but Statement II is correct.
- 

**192.** Regarding catalytic cycle of an enzyme action, select the correct sequential steps :

- A. Substrate enzyme complex formation.
- B. Free enzyme ready to bind with another substrate.
- C. Release of products.
- D. Chemical bonds of the substrate broken.
- E. Substrate binding to active site.

Choose the correct answer from the options given below:

- (1) E, A, D, C, B
  - (2) A, E, B, D, C
  - (3) B, A, C, D, E
  - (4) E, D, C, B, A
- 

**193.** Given below are two statements:

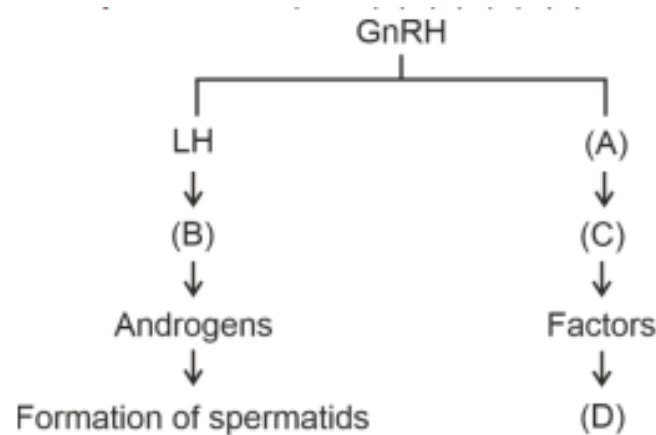
Statement I: Gause's competitive exclusion principle states that two closely related species competing for different resources cannot exist indefinitely.

Statement II: According to Gause's principle, during competition, the inferior will be eliminated. This may be true if resources are limiting.

In the light of the above statements, choose the correct answer from the options given below:

- (1) Both Statement I and Statement II are true.
  - (2) Both Statement I and Statement II are false.
  - (3) Statement I is true but Statement II is false.
  - (4) Statement I is false but Statement II is true.
- 

**194.** Identify the correct option (A), (B), (C), (D) with respect to spermatogenesis.



Choose the correct answer from the options given below:

- (1) FSH, Leydig cells, Sertoli cells, spermatogenesis.
  - (2) ICSH, Interstitial cells, Leydig cells, spermiogenesis.
  - (3) FSH, Sertoli cells, Leydig cells, spermatogenesis.
  - (4) ICSH, Leydig cells, Sertoli cells, spermatogenesis.
- 

**195.** Match List I with List II :

List I

- A. P wave
- B. QRS complex
- C. T wave
- D. T-P gap

List II

- I. Heart muscles are electrically silent.
- II. Depolarisation of ventricles.
- III. Depolarisation of atria.
- IV. Repolarisation of ventricles.

Choose the correct answer from the options given below:

- (1) A-I, B-III, C-II, D-IV
  - (2) A-II, B-III, C-I, D-II
  - (3) A-III, B-II, C-IV, D-I
  - (4) A-IV, B-II, C-I, D-III
- 

**196.** Choose the correct statement given below regarding juxta medullary nephron.

- (1) Juxta medullary nephrons are located in the columns of Bertini.
  - (2) Renal corpuscle of juxta medullary nephron lies in the outer portion of the renal medulla.
  - (3) Loop of Henle of juxta medullary nephron runs deep into medulla.
  - (4) Juxta medullary nephrons outnumber the cortical nephrons.
- 

**197.** Given below are two statements:

Statement I: Bone marrow is the main lymphoid organ where all blood cells including lymphocytes are produced.

Statement II: Both bone marrow and thymus provide micro environments for the development and maturation of T-lymphocytes.

In the light of above statements, choose the most appropriate answer from the options given below:

- (1) Both Statement I and Statement II are correct.
  - (2) Both Statement I and Statement II are false.
  - (3) Statement I is correct but Statement II is incorrect.
  - (4) Statement I is incorrect but Statement II is correct.
- 

**198.** Match List I with List II:

List I

- A. Unicellular glandular epithelium
- B. Compound epithelium
- C. Multicellular glandular epithelium canal
- D. Endocrine glandular epithelium

List II

- I. Salivary glands
- II. Pancreas
- III. Goblet cells of alimentary
- IV. Moist surface of buccal

cavity

Choose the correct answer from the options given below:

- (1) A-II, B-I, C-III, D-IV
  - (2) A-IV, B-III, C-I, D-II
  - (3) A-II, B-I, C-IV, D-III
  - (4) A-II, B-I, C-V, D-III
- 

**199.** Match List I with List II:

List I

List II

A. Mesozoic Era

I. Lower invertebrates

B. Proterozoic Era

II. Fish Amphibia

C. Cenozoic Era

III. Birds Reptiles

D. Paleozoic Era

IV. Mammals

Choose the correct answer from the options given below:

- (1) A-II, B-III, C-II, D-IV
  - (2) A-III, B-II, C-IV, D-I
  - (3) A-III, B-IV, C-I, D-II
  - (4) A-III, B-I, C-IV, D-II
- 

**200.** As per ABO blood grouping system, the blood group of father is B+, mother is A+ and child is O+. Their respective genotype can be:

- (1)  $I^B/I^B$
  - (2)  $I^B/I^A$
  - (3)  $I^B/i$
  - (4)  $I^A/i$
-