

PART III

18 — PHARMACEUTICAL TECHNOLOGY

(Answer ALL questions)

41. Which of the following is an imino acid?
- Serine
 - Alanine
 - Glycine
 - Proline
42. Which of the following is an example of reversible inhibitor?
- DIPF
 - Penicillin
 - Iodoacetamide
 - Protease inhibitors
43. Mycoplasma are different from other prokaryotes by
- Absence of cell wall
 - Presence of chitin
 - Presence of murein
 - Presence of proteins in cell wall
44. Where does inhibitor bind on enzyme in mixed inhibition?
- At active site
 - Allosteric site
 - Enzyme – substrate complex
 - Binds on substrate
45. What is the general mechanism of an enzyme?
- It acts by reducing the activation energy.
 - It acts by increasing the activation energy.
 - It acts by decreasing the pH.
 - It acts by increasing the pH.
46. Which of the following is NOT an Cell Adhesion molecule?
- Selectin
 - Integrins
 - Cadherins
 - Tubulins
47. Which of the following sites is represented by Loops in lamp brush chromosomes?
- Crossing over
 - Cell division
 - Replication
 - Transcription
48. The Feulgen stain is used for staining
- plasma membrane
 - chromosomes
 - phospholipids
 - mitochondria
49. A fixative ————— the macromolecular components of a cell.
- Degrades
 - Immobilizes
 - Penetrates
 - granulates
50. Differential staining property of Gram staining is due to
- Difference in lipid content in Gram positive and negative bacteria
 - Difference in protoplasmic contents in Gram positive and negative bacteria
 - Difference in teichoic content in Gram positive and negative bacteria
 - None of the above

51. In Gram staining, if some bacteria retain the crystal violet stain after alcohol treatment, then the bacteria is
 - a. Incomplete experiment
 - b. Gram positive
 - c. Gram negative
 - d. None of these
52. DNA gyrase is inhibited by
 - a. Tetracycline
 - b. Cephalosporin
 - c. Nalidixic acid
 - d. Aurin tricarboxylic acid
53. Which of the following is a humanized antibody?
 - a. Doxorubicin
 - b. Sulforaphane
 - c. Vimentin
 - d. Herceptin
54. Cyclosporin A is a drug that _____
 - a. suppresses the immune system
 - b. increases body temperature
 - c. increases the production of antibodies
 - d. decreases body temperature
55. Which one of the following is the only immunoglobulins to cross the placenta?
 - a. IgM
 - b. IgG
 - c. IgA
 - d. IgD
56. The phenomenon of expression of only one allele of an immunoglobulin gene in lymphocytes is known as
 - a. Allelic exclusion
 - b. Allelic inclusion
 - c. Allelic variation
 - d. Allelic heterogeneity
57. Which of the following graft is transplanted between two genetically different individuals of same species?
 - a. Autograft
 - b. Xenograft
 - c. Allograft
 - d. Syngraft
58. Identify autoimmune diseases among the following.
 - a. Pernicious Anemia
 - b. Type II diabetes
 - c. Type I diabetes
 - d. Gestational diabetes
59. Mast cells contain vesicles that store large amount of histamine. After staining with eosin, these vesicles are stained in red color. Which of the following interactions involved between histamine and eosin?
 - a. Electrostatic interaction
 - b. Hydrogen bonding
 - c. Hydrophobic interaction
 - d. Covalent bonding
60. During an allergic immune response, histamine is released from
 - a. Mast cells
 - b. T lymphocytes
 - c. B lymphocytes
 - d. Special lymphocytes that also secrete IgE
61. Kupffer cells are found in
 - a. Small intestine
 - b. Liver
 - c. Stomach
 - d. Large intestine

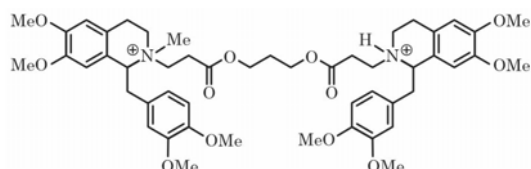
62. Which of the following is Not an example of a live attenuated vaccine?
- Tetanus vaccine
 - MMR vaccine
 - Varicella (chickenpox) vaccine
 - Influenza vaccine
63. Which of the following is an example of subunit vaccine?
- Small pox vaccine
 - Hepatitis B vaccine
 - MMR vaccine
 - Yellow fever vaccine
64. Type II hypersensitivity
- Is antibody independent
 - Is complement independent
 - Is mediated by CD8+ cells
 - Involves antibody mediated destruction of cells.
65. The centrifugal effect counteracts one of the following forces
- Brownian forces
 - Cohesive forces
 - Electrostatic forces
 - Gravitational forces
66. Which centrifugation depends on buoyant densities?
- Isopycnic centrifugation
 - Gradient centrifugation
 - Density gradient centrifugation
 - Differential centrifugation
67. What is the problem in the evaporation in the climbing film evaporator?
- Boiling point of liquid
 - Droplet formation
 - Entrainment of liquid
 - Film formation
68. Calandria consists of several
- Baffles
 - Jackets
 - Outlets
 - Tubular surfaces
69. Which one of the following parameters of the finished product is NOT influenced by the selection of size reduction equipment?
- Porosity
 - Shape
 - Surface roughness
 - True density
70. A tablet to treat a headache must first be dissolved in water before swallowing. Which one of the following best describes this type of tablet?
- Modified release
 - Oral disintegrating
 - Effervescent
 - Buccal
71. A drug suspension decomposes by zero-order kinetics with a rate constant of $2 \text{ mg mL}^{-1} \text{ month}^{-1}$. If the initial concentration is 100 mg mL^{-1} , what is the shelf life ($t_{10\%}$)?
- 2 months
 - 3 months
 - 4 months
 - 5 months
72. A drug solution decomposes via first-order kinetics with a rate constant, k , of 0.0077 days^{-1} . What is the half-life of the drug in solution?
- 0.033 day
 - 33 days
 - 70 days
 - 90 days

73. Simple syrup is a saturated solution of
- Sucrose
 - Fructose
 - Dextrose
 - None of these
74. The spatulation process is well suited for mixing of which of the following powder?
- Hygroscopic
 - Volatile
 - Eutectic
 - Effervescent
75. A suspension is formed from uniform particles of solid, of diameter 10 Mm, suspended in a solvent. What is the best description of this system?
- Monodisperse and coarse
 - Monodisperse and colloidal
 - Polydisperse and coarse
 - Polydisperse and colloidal
76. In the DLVO theory of colloids, normal thermal motion may be sufficient to overcome the energy barrier that leads to irreversible particle aggregation. Which one of the following is the name of this energy barrier?
- Primary maximum
 - Secondary maximum
 - Primary minimum
 - Secondary minimum
77. An Isosbestic point is a
- Specific wavelength at which a single component has maximum absorptivity
 - Specific wavelength at which the solvent has maximum absorptivity
 - Specific wavelength at which two or more components have the same absorptivity
 - Specific wavelength at which extinction co efficiency of a component is zero
78. DNA denaturation is an example of which type of shift ?
- Bathochromic
 - Blue shift
 - Hyperchromic shift
 - Red shift
79. Which movement is required for the IR spectroscopy?
- Dipole movement
 - Spin movement
 - Round movement
 - All of the above
80. In which bending type of vibration bond angle is constant ?
- Scissoring
 - Twisting
 - Rocking
 - All of the above
81. Which of the following is the disadvantage of reciprocating pump used in liquid chromatography?
- Produces pulsed flow
 - Corrosive components
 - Does not have small hold-up value
 - Does not have moderate flow rate
82. Which of the following will improve the efficiency of separation process in liquid chromatography?
- Increase in sample size, increase in column diameter
 - Reduction in sample size, increase in column diameter
 - Increase in sample size, reduction in column diameter
 - Reduction in sample size, reduction in column diameter

83. Which of the following cannot be done to reduce ripple in High-pressure liquid chromatography?
- Using bellows
 - Using restrictors
 - Using long nylon tube between pump and column
 - Avoiding the use of solvent pump
84. In reverse phase chromatography, the stationary phase is made by
- Non – polar
 - Polar
 - Both (a) and (b)
 - None of these
85. Which of the following HPLC detectors is used as a bulk property or general-purpose detector?
- Electrochemical detector
 - Fluorescence detector
 - UV-Visible detector
 - Evaporative Light scattering detector
86. Which of the following techniques would be most useful to identify as well as quantify the presence of a known impurity in a drug substance?
- NMR
 - MS
 - IR
 - HPLC
87. Which of the following is not true about the guard column used in liquid chromatography?
- It filters particles that clog the separation column
 - It extends the life time of separation column
 - It allows particles that cause precipitation upon contact with stationary or mobile phase
 - The size of packing varies with the type of protection needed
88. Which of the following is not true about Hydraulic capacitance flow control system used in HPLC?
- It can be used only for liquids with low viscosity
 - It is irrespective of solvent compressibility
 - It maintains constant flow
 - It smoothens high-pressure pump pulsations
89. Morphine is the structure chiefly responsible for the biological activity of opium. What is the name given to the chemical that is chiefly responsible for the biological activity of a natural extract?
- Lead compound
 - Pharmacophore
 - Active principle
 - Lead principle
90. What is the predominant β -adrenoceptor in bronchial smooth muscle?
- β_1 -adrenoceptor
 - β_2 -adrenoceptor
 - β_3 -adrenoceptor
 - β_4 -adrenoceptor
91. To which class of compounds do adrenaline, noradrenaline and dopamine belong?
- Phenethylamines Opium
 - Diphenolethylamines
 - Catecholamines
 - Adrenergics
92. What is the predominant adrenoceptor in heart muscle?
- α_1 -adrenoreceptor
 - α_2 -adrenoreceptor
 - β_1 -adrenoceptor
 - β_2 -adrenoceptor

93. What sort of receptor is the muscarinic receptor?
- A G-protein coupled receptor.
 - A kinase linked receptor.
 - An intracellular receptor
 - An ion channels.

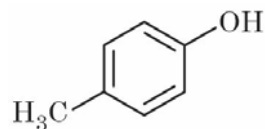
94. Atracurium is used intravenously as a neuromuscular blocker.



The molecule undergoes a chemical degradation at slightly alkaline pH. What is the name of this reaction?

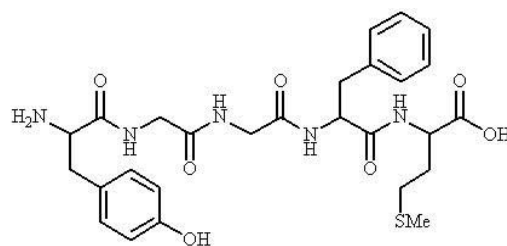
- Hofmann rearrangement
 - Hofmann elimination
 - Cope rearrangement
 - McLafferty rearrangement
95. What does the symbol P represent in a QSAR equation?
- pH
 - plasma concentration
 - partition coefficient
 - prodrug
96. Which of the following statements is untrue when comparing 3D QSAR with conventional QSAR?
- Only drugs of the same structural class should be studied by 3D QSAR or QSAR.
 - 3D QSAR has a predictive quality unlike QSAR.
 - Experimental parameters are not required by 3D QSAR, but are for QSAR.
 - Results can be shown graphically in 3D QSAR, but not with QSAR.

97. Calculate the $\log P$ value for the structure shown; $\log P$ for benzene = 2.13; $\pi(\text{OH})$ - 0.67; $\pi(\text{CH}_3)$ 0.52



- 3.32
- 0.94
- 1.98
- 2.13

98. Consider the following analgesic.



What is the source of this structure?

- Opium
 - Frog
 - An endogenous compound present in the body
 - Snake Venom
99. What does a negative value of σ signify for a substituent?
- It is electron donating
 - It is electron withdrawing
 - It is neutral
 - It is hydrophobic
100. Which of the following is one of the rules in Lipinski's rule of five?
- A molecular weight equal to 500
 - No more than five hydrogen bond acceptor groups
 - No more than 10 hydrogen bond donor groups
 - A calculated $\log P$ value less than +5