

ZOOLOGY

SECTION-A

151. Given below are two statements : one is labelled as Assertion A and the other is labelled as Reason R :

Assertion A : FSH acts upon ovarian follicles in female and Leydig cells in male.

Reason R : Growing ovarian follicles secrete estrogen in female while interstitial cells secrete androgen in male human being.

In the light of the above statements, choose the correct answer from the options given below :

- (1) Both A and R are true and R is the correct explanation of A
- (2) Both A and R are true but R is NOT the correct explanation of A
- (3) A is true but R is false
- (4) A is false but R is true

Answer (4)

152. Match List I with List II :

	List I		List II
A.	Pons	I.	Provides additional space for Neurons, regulates posture and balance.
B.	Hypothalamus	II.	Controls respiration and gastric secretions.
C.	Medulla	III.	Connects different regions of the brain.
D.	Cerebellum	IV.	Neuro secretory cells

Choose the correct answer from the options given below :

- (1) A-II, B-III, C-I, D-IV
- (2) A-III, B-IV, C-II, D-I
- (3) A-I, B-III, C-II, D-IV
- (4) A-II, B-I, C-III, D-IV

Answer (2)

153. Which of the following is not a steroid hormone?

- (1) Cortisol
- (2) Testosterone
- (3) Progesterone
- (4) Glucagon

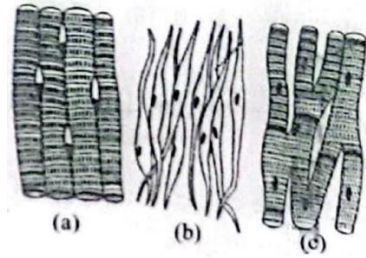
Answer (4)

154. Which of the following is not a component of Fallopian tube?

- (1) Uterine fundus
- (2) Isthmus
- (3) Infundibulum
- (4) Ampulla

Answer (1)

155. Three types of muscles are given as a, b and c. Identify the correct matching pair along with their location in human body:



Name of muscle/location

- (1) (a) Smooth - Toes
(b) Skeletal – Legs
(c) Cardiac – Heart
- (2) (a) Skeletal - Triceps
(b) Smooth – Stomach
(c) Cardiac – Heart
- (3) (a) Skeletal - Biceps
(b) Involuntary – Intestine
(c) Smooth – Heart
- (4) (a) Involuntary – Nose tip
(b) Skeletal – Bone
(c) Cardiac – Heart

Answer (2)

156. Match List I with List II :

	List I		List II
A.	Expiratory capacity	I.	Expiratory reserve volume + Tidal volume + Inspiratory reserve volume
B.	Functional residual capacity	II.	Tidal volume + Expiratory reserve volume
C.	Vital capacity	III.	Tidal volume + Inspiratory reserve volume
D.	Inspiratory capacity	IV.	Expiratory reserve volume + Residual volume

Choose the correct answer from the options given below :

- (1) A-II, B-IV, C-I, D-III
- (2) A-III, B-II, C-IV, D-I
- (3) A-II, B-I, C-IV, D-III
- (4) A-I, B-III, C-II, D-IV

Answer (1)

157. The flippers of the Penguins and Dolphins are the example of the

- (1) Adaptive radiation
- (2) Natural selection
- (3) Convergent evolution
- (4) Divergent evolution

Answer (3)

158. Match List I with List II :

	List-I		List-II
A.	Lipase	I.	Peptide bond
B.	Nuclease	II.	Ester bond
C.	Protease	III.	Glycosidic bond
D.	Amylase	IV.	Phosphodiester bond

Choose the correct answer from the options given below :

- (1) A-IV, B-II, C-III, D-I
- (2) A-III, B-II, C-I, D-IV
- (3) A-II, B-IV, C-I, D-III
- (4) A-IV, B-I, C-III, D-II

Answer (3)

159. The "Ti plasmid" of *Agrobacterium tumefaciens* stands for

- (1) Tumour inhibiting plasmid
- (2) Tumor independent plasmid
- (3) Tumor inducing plasmid
- (4) Temperature independent plasmid

Answer (3)

160. Match List I with List II :

List I	List II
A. Axoneme	I. Centriole
B. Cartwheel pattern	II. Cilia and flagella
C. Crista	III. Chromosome
D. Satellite	IV. Mitochondria

Choose the correct answer from the options given below :

- (1) A-IV, B-III, C-II, D-I
- (2) A-IV, B-II, C-III, D-I
- (3) A-II, B-IV, C-I, D-III
- (4) A-II, B-I, C-IV, D-III

Answer (4)

161. Which one of the following factors will not affect the Hardy-Weinberg equilibrium?

- (1) Genetic recombination
- (2) Genetic drift
- (3) Gene migration
- (4) Constant gene pool

Answer (4)

162. Given below are two statements:

Statement I : In the nephron, the descending limb of loop of Henle is impermeable to water and permeable to electrolytes.

Statement II : The proximal convoluted tubule is lined by simple columnar brush border epithelium and increases the surface area for reabsorption.

In the light of the above statements, choose the correct answer from the option given below :

- (1) Both Statement I and Statement II are true
- (2) Both Statement I and Statement II are false
- (3) Statement I is true but Statement II is false
- (4) Statement I is false but Statement II is true

Answer (2)

168. Match List I with List II :

	List I		List II
A.	Typhoid	I.	Fungus
B.	Leishmaniasis	II.	Nematode
C.	Ringworm	III.	Protozoa
D.	Filariasis	IV.	Bacteria

Choose the correct answer from the options given below:

- (1) A-I, B-III, C-II, D-IV
- (2) A-IV, B-III, C-I, D-II
- (3) A-III, B-I, C-IV, D-II
- (4) A-II, B-IV, C-III, D-I

Answer (2)

169. Match List I with List II :

	List I		List II
A.	Pleurobrachia	I.	Mollusca
B.	Radula	II.	Ctenophora
C.	Stomochord	III.	Osteichthyes
D.	Air bladder	IV.	Hemichordata

Choose the correct answer from the options given below :

- (1) A-IV, B-II, C-III, D-I
- (2) A-II, B-I, C-IV, D-III
- (3) A-II, B-IV, C-I, D-III
- (4) A-IV, B-III, C-II, D-I

Answer (2)

170. Match List I with List II :

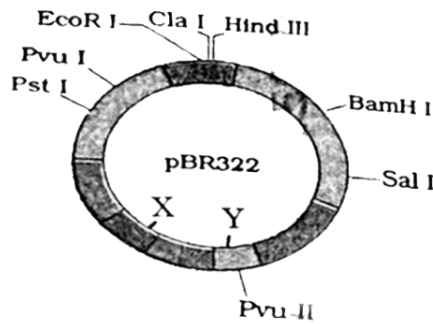
List I	List II
A. Common cold	I. <i>Plasmodium</i>
B. Haemozoin	II. Typhoid
C. Widal test	III. Rhinoviruses
D. Allergy	IV. Dust mites

Choose the correct answer from the options given below :

- (1) A-II, B-IV, C-III, D-I
- (2) A-I, B-III, C-II, D-IV
- (3) A-III, B-I, C-II, D-IV
- (4) A-IV, B-II, C-III, D-I

Answer (3)

171. The following diagram showing restriction sites in *E. coli* cloning vector pBR322. Find the role of 'X' and 'Y' genes :



- (1) The gene 'X' is responsible for resistance to antibiotics and 'Y' for protein involved in the replication of Plasmid.
- (2) The gene 'X' is responsible for controlling the copy number of the linked DNA and 'Y' for protein involved in the replication of Plasmid.
- (3) The gene 'X' is for protein involved in replication of Plasmid and 'Y' for resistance to antibiotics.
- (4) Gene 'X' is responsible for recognitions sites and 'Y' is responsible for antibiotic resistance.

Answer (2)

172. Given below are two statements:

Statement I: The presence or absence of hymen is not a reliable indicator of virginity.

Statement II: The hymen is torn during the first coitus only.

In the light of the above statements, choose the correct answer from the options given below :

- (1) Both Statement I and Statement II are true
- (2) Both Statement I and Statement II are false
- (3) Statement I is true but Statement II is false
- (4) Statement I is false but Statement II is true

Answer (3)

173. Following are the stages of pathway for conduction of an action potential through the heart

- A. AV bundle
- B. Purkinje fibres
- C. AV node
- D. Bundle branches
- E. SA node

Choose the correct sequence of pathway from the options given below

- (1) E-C-A-D-B
- (2) A-E-C-B-D
- (3) B-D-E-C-A
- (4) E-A-D-B-C

Answer (1)

183. Match List I with List II :

List I	List II
A. <i>Pterophyllum</i>	I. Hag fish
B. <i>Myxine</i>	II. Saw fish
C. <i>Pristis</i>	III. Angel fish
D. <i>Exocoetus</i>	IV. Flying fish

Choose the correct answer from the options given below :

- | | |
|----------------------------|----------------------------|
| (1) A-II, B-I, C-III, D-IV | (2) A-III, B-I, C-II, D-IV |
| (3) A-IV, B-I, C-II, D-III | (4) A-III, B-II, C-I, D-IV |

Answer (2)

184. Match List I with List II :

List I	List II
A. Cocaine	I. Effective sedative in surgery
B. Heroin	II. <i>Cannabis sativa</i>
C. Morphine	III. <i>Erythroxylum</i>
D. Marijuana	IV. <i>Papaver somniferum</i>

Choose the correct answer from the options given below:

- | | |
|----------------------------|----------------------------|
| (1) A-IV, B-III, C-I, D-II | (2) A-I, B-III, C-II, D-IV |
| (3) A-II, B-I, C-III, D-IV | (4) A-III, B-IV, C-I, D-II |

Answer (4)

185. Which of the following are Autoimmune disorders?

- | | |
|---------------------------------------|-------------------------|
| A. Myasthenia gravis | B. Rheumatoid arthritis |
| C. Gout | D. Muscular dystrophy |
| E. Systemic Lupus Erythematosus (SLE) | |

Choose the most appropriate answer from the options given below:

- | | |
|-------------------|-------------------|
| (1) A, B & D only | (2) A, B & E only |
| (3) B, C & E only | (4) C, D & E only |

Answer (2)

SECTION-B

186. Match List I with List II :

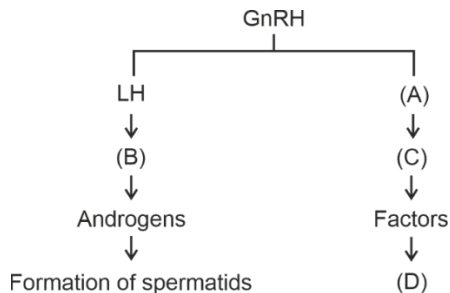
	List I		List II
A.	Exophthalmic goiter	I.	Excess secretion of cortisol, moon face & hyperglycemia.
B.	Acromegaly	II.	Hypo-secretion of thyroid hormone and stunted growth.
C.	Cushing's syndrome	III.	Hyper secretion of thyroid hormone & protruding eye balls.
D.	Cretinism	IV.	Excessive secretion of growth hormone.

Choose the correct answer from the options given below :

- | | |
|----------------------------|----------------------------|
| (1) A-I, B-III, C-II, D-IV | (2) A-IV, B-II, C-I, D-III |
| (3) A-III, B-IV, C-II, D-I | (4) A-III, B-IV, C-I, D-II |

Answer (4)

187. Identify the correct option (A), (B), (C), (D) with respect to spermatogenesis.



- (1) FSH, Leydig cells, Sertoli cells, spermiogenesis.
- (2) ICSH, Interstitial cells, Leydig cells, spermiogenesis.
- (3) FSH, Sertoli cells, Leydig cells, spermatogenesis.
- (4) ICSH, Leydig cells, Sertoli cells, spermatogenesis.

Answer (1)

188. Given below are two statements:

Statement I: Mitochondria and chloroplasts both double membranes bound organelles.

Statement II: Inner membrane of mitochondria is relatively less permeable, as compared chloroplast.

In the light of the above statements, choose the mis appropriate answer from the options given below:

- (1) Both Statement I and Statement II are correct.
- (2) Both Statement I and Statement II are incorrect.
- (3) Statement I is correct but Statement II is incorrect.
- (4) Statement I is incorrect but Statement II is correct.

Answer (3)

189. Given below are two statements:

Statement I: The cerebral hemispheres are connected by nerve tract known as corpus callosum.

Statement II: The brain stem consists of the medulla oblongata, pons and cerebrum.

In the light of the above statements, choose the most appropriate answer from the options given below:

- (1) Both Statement I and Statement II are correct.
- (2) Both Statement I and Statement II are incorrect.
- (3) Statement I is correct but Statement II is incorrect.
- (4) Statement I is incorrect but Statement II is correct.

Answer (3)

190. Match List I with List II:

	List I		List II
A.	RNA polymerase III	I.	snRNPs
B.	Termination of transcription	II.	Promotor
C.	Splicing of Exons	III.	Rho factor
D.	TATA box	IV.	SnRNAs, tRNA

Choose the correct answer from the options given below :

- (1) A-II, B-IV, C-I, D-III
- (2) A-III, B-II, C-IV, D-I
- (3) A-III, B-IV, C-I, D-II
- (4) A-IV, B-III, C-I, D-II

Answer (4)

199. Choose the correct statement given below regarding juxta medullary nephron.

- (1) Juxta medullary nephrons are located in the columns of Bertini.
- (2) Renal corpuscle of juxta medullary nephron lies in the outer portion of the renal medulla.
- (3) Loop of Henle of juxta medullary nephron runs deep into medulla.
- (4) Juxta medullary nephrons outnumber the cortical nephrons.

Answer (3)

200. Match List I with List II:

	List I		List II
A.	Unicellular glandular epithelium	I.	Salivary glands
B.	Compound epithelium	II.	Pancreas
C.	Multicellular glandular epithelium	III.	Goblet cells of alimentary canal
D.	Endocrine glandular epithelium	IV.	Moist surface of buccal cavity

Choose the correct answer from the options given below:

- (1) A-II, B-I, C-III, D-IV
- (2) A-IV, B-III, C-I, D-II
- (3) A-III, B-IV, C-I, D-II
- (4) A-II, B-I, C-IV, D-III

Answer (3)

