



# SRI CHAITANYA STUDENTS BREAK ALL THE RECORDS IN NEET 2024

**11 STUDENTS SCORING 715 MARKS & ABOVE OUT OF 720 MARKS**

ALL INDIA  
RANK

ALL INDIA  
OPEN CATEGORY  
RANK

**720**  
**720**  
MARKS

**AIR**

IRAM QUAZI | Appl. No. 24041319060\*

 <b>715</b> 720 MARKS <b>AADARSH SINGH MOYAL</b> <small>H.T.No. 24041018555</small>	 <b>715</b> 720 MARKS <b>ISHA KOTHARI</b> <small>H.T.No. 240410220941</small>	 <b>715</b> 720 MARKS <b>GATTU BHANUTEJA SAI</b> <small>H.T.No. 240410255320</small>	 <b>715</b> 720 MARKS <b>KALYAN V</b> <small>H.T.No. 24041031454</small>	 <b>715</b> 720 MARKS <b>DARSH PAGHDAR</b> <small>H.T.No. 24041025765</small>
 <b>715</b> 720 MARKS <b>AMINA ARIF KADIWALA</b> <small>H.T.No. 24041032313</small>	 <b>715</b> 720 MARKS <b>P. PAVAN KUMAR REDDY</b> <small>H.T.No. 24041171922</small>	 <b>715</b> 720 MARKS <b>V. MUKHESH CHOWDARY</b> <small>H.T.No. 24041131302</small>	 <b>715</b> 720 MARKS <b>UJJWAL KUMAR</b> <small>H.T.No. 240410577616</small>	 <b>715</b> 720 MARKS <b>ADI SETHI</b> <small>H.T.No. 24041058698</small>

**32 students scored 710 marks and above out of 720 marks in All India Open Category**

 <b>716</b> 720 <b>PRATYUSH MALAV</b> <small>APPL. NO. 240410146718*</small>	 <b>715</b> 720 <b>GVENKATA NRIPESH</b> <small>APPL. NO. 24041007107</small>	 <b>715</b> 720 <b>Y RESHMA NYSHITHA</b> <small>APPL. NO. 240410199984</small>	 <b>715</b> 720 <b>SURYANDEEP P</b> <small>APPL. NO. 240410384546*</small>	 <b>715</b> 720 <b>V SNEHA SWARNIMA</b> <small>APPL. NO. 240410043051</small>	 <b>715</b> 720 <b>UDAY KIRAR</b> <small>APPL. NO. 240410101720*</small>	 <b>715</b> 720 <b>V SNEHA SWARNIMA</b> <small>APPL. NO. 240410043051</small>
 <b>715</b> 720 <b>DRON JAIN</b> <small>APPL. NO. 240410107006*</small>	 <b>715</b> 720 <b>GORANTLA LAASYA</b> <small>APPL. NO. 240410234696</small>	 <b>715</b> 720 <b>M DINESH BAJAJ</b> <small>APPL. NO. 240410568263*</small>	 <b>715</b> 720 <b>PRATHAM BUDHWAR</b> <small>APPL. NO. 240410010178*</small>	 <b>715</b> 720 <b>CH SAIPRANAV</b> <small>APPL. NO. 240410093134</small>	 <b>715</b> 720 <b>SANVI JAIN</b> <small>APPL. NO. 240410422262*</small>	 <b>715</b> 720 <b>TOSHIK JAIN</b> <small>APPL. NO. 3902030417175*</small>
 <b>715</b> 720 <b>OM VATS</b> <small>APPL. NO. 240410500332</small>	 <b>715</b> 720 <b>UJJWAL KUMAR</b> <small>APPL. NO. 240410577616*</small>	 <b>715</b> 720 <b>SIRIGIRI MOKSHASRI</b> <small>APPL. NO. 240410626824</small>	 <b>715</b> 720 <b>R BHAVITHA</b> <small>APPL. NO. 240410281775</small>	 <b>715</b> 720 <b>NEHAL H PRASANNA</b> <small>APPL. NO. 240410344686</small>	 <b>715</b> 720 <b>P MEHARBABA ROHITHA</b> <small>APPL. NO. 240410355154</small>	 <b>715</b> 720 <b>ANADI SETHI</b> <small>APPL. NO. 240410586988*</small>

We have

**93**

Students

who scored

**700**

marks and above

We have

**664**

Students

who scored

**650**

marks and above

We have

**1777**

Students

who scored

**600**

marks and above

BELOW 100  
ALL INDIA  
RANKS COUNT

**8**

RANKS

BELOW 200  
ALL INDIA  
RANKS COUNT

**16**

RANKS

BELOW 500  
ALL INDIA  
RANKS COUNT

**39**

RANKS

BELOW 1000  
ALL INDIA  
RANKS COUNT

**62**

RANKS

Sri Chaitanya  
Ranks in NEET 2024

**22,000<sup>+</sup>**

Sri Chaitanya students  
who can get medical seats

**9,512<sup>+</sup>**

## NEET – 2025

### PHYSICS

1. A parallel plate capacitor made of circular plates is being charged such that the surface charge density on its plates is increasing at a constant rate with time. The magnetic field arising due to displacement current, is :

- (1) non-zero everywhere with maximum at the imaginary cylindrical surface connecting peripheries of the plates
- (2) zero between the plates and non-zero outside
- (3) zero at all places
- (4) constant between the plates and zero outside the plates

**Ans: (1)**

2. An electric dipole with dipole moment  $5 \times 10^{-6} \text{ cm}$  is aligned with the direction of a uniform electric field of magnitude  $4 \times 10^5 \text{ N/C}$ . The dipole is then rotated through an angle of  $60^\circ$  with respect to the electric field. The change in the potential energy of the dipole is:

- (1) 1.2 J
- (2) 1.5 J
- (3) 0.8 J
- (4) 1.0 J

**Ans: (4)**

3. A ball of mass 0.5 kg is dropped from a height of 40 m. The ball hits the ground and rises to a height of 10 m. The impulse imparted to the ball during its collision with the ground is

(Take  $g = 9.8 \text{ m/s}^2$ )

- (1) 0
- (2) 84 NS
- (3) 21 NS
- (4) 7 NS

**Ans: (3)**

4. The intensity of transmitted light when a polaroid sheet, placed between two crossed polaroids at  $22.5^\circ$ , from the polarization axis of one of the polaroid, is ( $I_0$  is the intensity of polarised light after passing through the first polaroid):

- (1)  $\frac{I_0}{8}$
- (2)  $\frac{I_0}{16}$
- (3)  $\frac{I_0}{2}$
- (4)  $\frac{I_0}{4}$

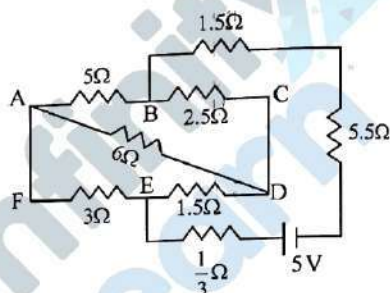
**Ans: (1)**

5. The kinetic energies of two similar cars  $A$  and  $B$  are 100 J and 225 J respectively. On applying breaks, car  $A$  stops after 1000 m and car  $B$  stops after 1500 m. If  $F_A$  and  $F_R$  are the forces applied by the breaks on cars  $A$  and  $B$  respectively, then the ratio  $F_A/F_B$  is

- (1)  $\frac{1}{3}$
- (2)  $\frac{1}{2}$
- (3)  $\frac{3}{2}$
- (4)  $\frac{2}{3}$

**Ans: (4)**

6. The current passing through the battery in the given circuit, is:

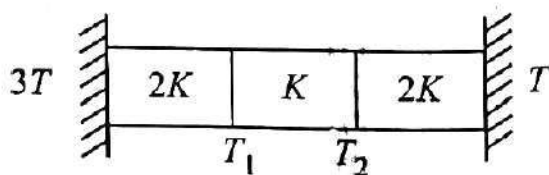


- (1) 2.5 A
- (2) 1.5 A
- (3) 2.0 A
- (4) 0.5 A

**Ans: (4)**



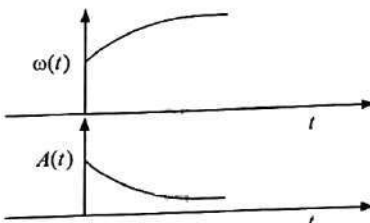
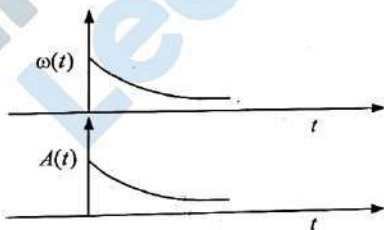
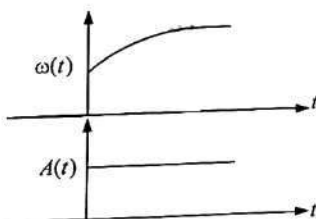
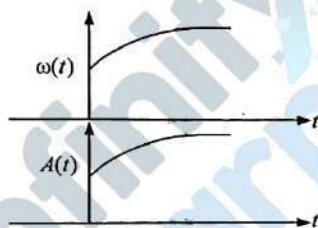
7. Three identical heat conducting rods are connected in series as shown in the figure. The rods on the sides have thermal conductivity  $2K$  while that in the middle has thermal conductivity  $K$ . The left end of the combination is maintained at temperature  $3T$  and the right end at  $T$ . The rods are thermally insulated from outside. In steady state, temperature at the left junction is  $T_1$  and that at the right junction is  $T_2$ . The ratio  $T_1/T_2$  is



- (1)  $\frac{5}{3}$   
(2)  $\frac{5}{4}$   
(3)  $\frac{3}{2}$   
(4)  $\frac{4}{3}$

**Ans: (1)**

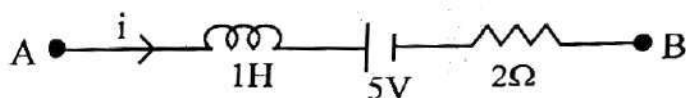
8. In an oscillating spring mass system, a spring is connected to a box filled with sand. As the box oscillates, sand leaks slowly out of the box vertically so that the average frequency  $\omega(t)$  and average amplitude  $A(t)$  of the system change with time  $t$ . Which one of the following options schematically depicts these changes correctly?



**Ans: (3)**



9. AB is a part of an electrical circuit (see figure). The potential difference " $V_A - V_B$ ", at the instant when current  $i = 2$  A and is increasing at a rate of 1 amp/second is:



- (1) 9 volt
- (2) 10 volt
- (3) 5 volt
- (4) 6 volt

**Ans: (2)**

10. A particle of mass  $m$  is moving around the origin with a constant force  $F$  pulling it towards the origin. If Bohr model is used to describe its motion, the radius of the  $n^{\text{th}}$  orbit and the particle's speed  $v$  in the orbit depend on  $n$  as

- (1)  $r \propto n^{2/3}; v \propto n^{1/3}$
- (2)  $r \propto n^{4/3}; v \propto n^{-1/3}$
- (3)  $r \propto n^{1/3}; v \propto n^{1/3}$
- (4)  $r \propto n^{1/3}; v \propto n^{2/3}$

**Ans: (1)**

11. In some appropriate units, time ( $t$ ) and position ( $x$ ) relation of a moving particle is given by  $t = x^2 + x$ . The acceleration of the particle is

- (1)  $+\frac{2}{(x+1)^3}$
- (2)  $\frac{2}{2x+1}$
- (3)  $-\frac{2}{(x+2)^3}$
- (4)  $\frac{2}{(2x+1)^3}$

**Ans: (4)**

12. A model for quantized motion of an electron in a uniform magnetic field  $B$  states that the flux passing through the orbit of the electron is  $n(h/e)$  where  $n$  is an integer,  $h$  is Planck's constant and  $e$  is the magnitude of electron's charge. According to the model, the magnetic moment of an electron in its lowest energy state will be ( $m$  is the mass of the electron)

- (1)  $\frac{heB}{\pi m}$
- (2)  $\frac{heB}{2\pi m}$
- (3)  $\frac{he}{\pi m}$
- (4)  $\frac{he}{2\pi m}$

**Ans: (4)**

13. A microscope has an objective of focal length 2 cm, eyepiece of focal length 4 cm and the tube length of 40 cm. If the distance of distinct vision of eye is 25 cm, the magnification in the microscope is

- (1) 150
- (2) 250
- (3) 100
- (4) 125

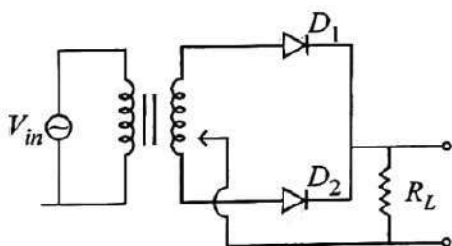
**Ans: (4)**

14. There are two inclined surfaces of equal length ( $L$ ) and same angle of inclination  $45^\circ$  with the horizontal. One of them is rough and the other is perfectly smooth. A given body takes 2 times as much time to slide down on rough surface than on the smooth surface. The coefficient of kinetic friction ( $\mu_k$ ) between the object and the rough surface is close to

- (1) 0.5
- (2) 0.75
- (3) 0.25
- (4) 0.40

**Ans: (2)**

15. A full wave rectifier circuit with diodes ( $D_1$ ) and ( $D_2$ ) is shown in the figure. If input supply voltage  $V_{in} = 220\sin(100\pi t)$  volt, then at  $t = 15\text{msec}$



- (1)  $D_1$  and  $D_2$  both are forward biased
- (2)  $D_1$  and  $D_2$  both are reverse biased
- (3)  $D_1$  is forward biased,  $D_2$  is reverse biased
- (4)  $D_1$  is reverse biased,  $D_2$  is forward biased

**Ans: (3)**

16. A uniform rod of mass 20 kg and length 5 m leans against a smooth vertical wall making an angle of  $60^\circ$  with it. The other end rests on a rough horizontal floor. The friction force that the floor exerts on the rod is (take  $g = 10 \text{ m/s}^2$ )
- (1) 200 N
  - (2)  $200\sqrt{3}$  N
  - (3) 100 N
  - (4)  $100\sqrt{3}$  N

**Ans: (4)**

17. Two identical charged conducting spheres  $A$  and  $B$  have their centres separated by a certain distance. Charge on each sphere is  $q$  and the force of repulsion between them is  $F$ . A third identical uncharged conducting sphere is brought in contact with sphere  $A$  first and then with  $B$  and finally removed from both. New force of repulsion between spheres  $A$  and  $B$  (Radii of  $A$  and  $B$  are negligible compared to the distance of separation so that for calculating force between them they can be considered as point charges) is best given as :
- (1)  $\frac{F}{2}$
  - (2)  $\frac{3F}{8}$
  - (3)  $\frac{3F}{5}$
  - (4)  $\frac{2F}{3}$

**Ans: (2)**



18. Two cities  $X$  and  $Y$  are connected by a regular bus service with a bus leaving in either direction every  $T$  min. A girl is driving scooter with a speed of  $60 \text{ km/h}$  in the direction  $X$  to  $Y$  notices that a bus goes past her every 30 minutes in the direction of her motion, and every 10 minutes in the opposite direction. Choose the correct option for the period  $T$  of the bus service and the speed (assumed constant) of the buses.

- (1) 10 min,  $90 \text{ km/h}$
- (2) 15 min,  $120 \text{ km/h}$
- (3) 9 min,  $40 \text{ km/h}$
- (4) 25 min,  $100 \text{ km/h}$

**Ans: (2)**

19. A container has two chambers of volumes  $V_1 = 2$  litres and  $V_2 = 3$  litres separated by a partition made of a thermal insulator. The chambers contains  $n_1 = 5$  and  $n_2 = 4$  moles of ideal gas at pressures  $p_1 = 1 \text{ atm}$  and  $p_2 = 2 \text{ atm}$ , respectively. When the partition is removed, the mixture attains an equilibrium pressure of:

- (1)  $1.4 \text{ atm}$
- (2)  $1.8 \text{ atm}$
- (3)  $1.3 \text{ atm}$
- (4)  $1.6 \text{ atm}$

**Ans: (4)**

20. De Broglie wavelength of an electron orbiting in the  $n = 2$  state of hydrogen atom is close to (Given Bohr radius =  $0.052 \text{ nm}$ )

- (1)  $1.67 \text{ nm}$
- (2)  $2.67 \text{ nm}$
- (3)  $0.067 \text{ nm}$
- (4)  $0.67 \text{ nm}$

**Ans: (4)**

21. To an ac power supply of  $220 \text{ V}$  at  $50 \text{ Hz}$ , a resistor of  $20\Omega$ , a capacitor of reactance  $25\Omega$  and an inductor of reactance  $45\Omega$  are connected in series. The corresponding current in the circuit and the phase angle between the current and the voltage is, respectively –

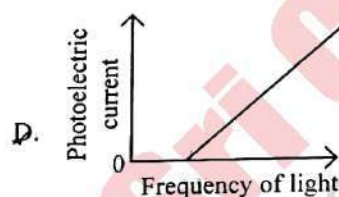
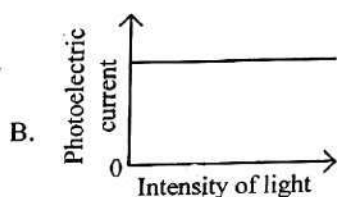
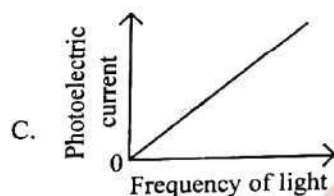
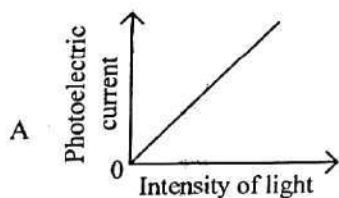
- (1)  $15.6 \text{ A}$  and  $30^\circ$
- (2)  $15.6 \text{ A}$  and  $45^\circ$

(3) 7.8 A and  $30^\circ$

(4) 7.8 A and  $45^\circ$

**Ans: (4)**

22. Which of the following options represent the variation of photoelectric current with property of light shown on the  $x$ -axis?



(1) A and D

(2) B and D

(3) A only

(4) A and C

**Ans: (3)**

23. A pipe open at both ends has a fundamental frequency  $f$  in air. The pipe is now dipped vertically in a water drum to half of its length. The fundamental frequency of the air column is now equal to:

(1)  $\frac{3f}{2}$

(2)  $2f$

(3)  $\frac{f}{2}$

(4)  $f$

**Ans: (4)**

24. Two identical point masses  $P$  and  $Q$ , suspended from two separate massless springs of spring constants  $k_1$  and  $k_2$ , respectively, oscillate vertically. If their maximum speeds are the same, the ratio  $(A_Q/A_P)$  of the amplitude  $A_Q$  of mass  $Q$  to the amplitude  $A_P$  of mass  $P$  is:

(1)  $\sqrt{\frac{k_2}{k_1}}$

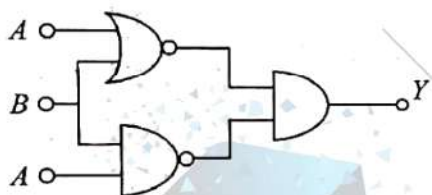
(2)  $\sqrt{\frac{k_1}{k_2}}$

(3)  $\frac{k_2}{k_1}$

(4)  $\frac{k_1}{k_2}$

**Ans: (2)**

25. The output ( $Y$ ) of the given logic implementation is similar to the output of an/a \_\_\_\_\_ gate.



(1) OR

(2) NOR

(3) AND

(4) NAND

**Ans: (2)**

26. An oxygen cylinder of volume 30 litre has 18.20 moles of oxygen. After some oxygen is withdrawn from the cylinder, its gauge pressure drops to 11 atmospheric pressure at temperature  $27^\circ\text{C}$ . The mass of the oxygen withdrawn from the cylinder is nearly equal to:

[Given,  $R = \frac{100}{12} \text{ J mol}^{-1} \text{ K}^{-1}$ , and molecular mass of  $\text{O}_2 = 32$ , 1 atm pressure  $= 1.01 \times 10^5 \text{ N/m}^2$ ]

(1) 0.116 kg

(2) 0.156 kg

(3) 0.125 kg

(4) 0.144 kg

**Ans: (1)**



27. In a certain camera, a combination of four similar thin convex lenses are arranged axially in contact. Then the power of the combination and the total magnification in comparison to the power ( $p$ ) and magnification ( $m$ ) for each lens will be, respectively

- (1)  $4p$  and  $m^4$
- (2)  $p^4$  and  $m^4$
- (3)  $4p$  and  $4m$
- (4)  $p^4$  and  $4m$

**Ans: (1)**

28. Two gases  $A$  and  $B$  are filled at the same pressure in separate cylinders with movable pistons of radius  $r_A$  and  $r_B$ , respectively. On supplying an equal amount of heat to both the systems reversibly under constant pressure, the pistons of gas  $A$  and  $B$  are displaced by 16 cm and 9 cm, respectively. If the change in their internal energy is the same, then the ratio  $r_A/r_B$  is equal to

- (1)  $\frac{2}{\sqrt{3}}$
- (2)  $\frac{\sqrt{3}}{2}$
- (3)  $\frac{4}{3}$
- (4)  $\frac{3}{4}$

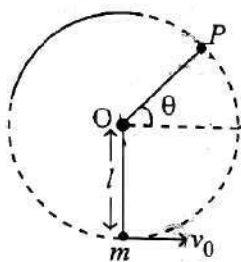
**Ans: (4)**

29. A balloon is made of a material of surface tension  $S$  and its inflation outlet (from where gas is filled in it) has small area  $A$ . It is filled with a gas of density  $\rho$  and takes a spherical shape of radius  $R$ . When the gas is allowed to flow freely out of it, its radius  $r$  changes from  $R$  to 0 (zero) in time  $T$ . If the speed  $v(r)$  of gas coming out of the balloon depends on  $r$  as  $r^\alpha$  and  $T \propto S^\alpha A^\beta \rho^\gamma R^\delta$  then

- (1)  $a = -\frac{1}{2}, \alpha = -\frac{1}{2}, \beta = -1, \gamma = \frac{1}{2}, \delta = \frac{7}{2}$
- (2)  $a = \frac{1}{2}, \alpha = \frac{1}{2}, \beta = -\frac{1}{2}, \gamma = \frac{1}{2}, \delta = \frac{7}{2}$
- (3)  $a = \frac{1}{2}, \alpha = \frac{1}{2}, \beta = -1, \gamma = +1, \delta = \frac{3}{2}$
- (4)  $a = -\frac{1}{2}, \alpha = \frac{1}{2}, \beta = -1, \gamma = -\frac{1}{2}, \delta = \frac{5}{2}$

**Ans: (1)**

30. A bob of heavy mass  $m$  is suspended by a light string of length  $l$ . The bob is given a horizontal velocity  $v_0$  as shown in figure. If the string gets slack at some point  $P$  making an angle  $\theta$  from the horizontal the ratio of the speed  $v$  of the bob at point  $P$  to its initial speed ( $v_0$ ) is:



(1)  $\left(\frac{\cos \theta}{2+3\sin \theta}\right)^{1/2}$

(3)  $(\sin \theta)^{1/2}$

(2)  $\left(\frac{\sin \theta}{2+3\sin \theta}\right)^{1/2}$

(4)  $\left(\frac{1}{2+3\sin \theta}\right)^{1/2}$

**Ans: (2)**

31. A physical quantity  $P$  is related to four observations  $a, b, c$  and  $d$  as follows:

$$P = a^3 b^2 / c \sqrt{d}$$

The percentage errors of measurement in  $a, b, c$  and  $d$  are 1%, 2%, 3% and 4% respectively. The percentage error in the quantity  $P$  is

(1) 13%

(2) 15%

(3) 10%

(4) 2%

**Ans: (1)**

32. The Sun rotates around its centre once in 27 days. What will be the period of revolution if the Sun were to expand to twice its present radius without any external influence? Assume the Sun to be a sphere of uniform density.

(1) 115 days

(2) 108 days

(3) 100 days

(4) 105 days

**Ans: (2)**

33. The radius of Martian orbit around the Sun is about 4 times the radius of the orbit of Mercury. The Martian year is 687 Earth days. Then which of the following is the length of year on Mercury?

(1) 172 earth days

- (2) 124 earth days M  
(3) 88 earth days in  
(4) 225 earth days

**Ans: (3)**

34. A wire of resistance  $R$  is cut into 8 equal pieces. From these pieces two equivalent resistances are made by adding four of these together in parallel. Then these two sets are added in series. The net effective resistance of the combination is :

- (1)  $\frac{R}{16}$                       (2)  $\frac{R}{8}$                       (3)  $\frac{R}{64}$                       (4)  $\frac{R}{32}$

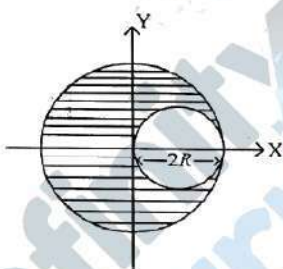
**Ans: (1)**

35. A photon and an electron (mass  $m$ ) have the same energy  $E$ . The ratio ( $\lambda_{\text{photon}} / \lambda_{\text{electron}}$ ) of their de Broglie wavelengths is: ( $c$  is the speed of light)

- (1)  $c\sqrt{\frac{2m}{E}}$                       (2)  $\frac{1}{c}\sqrt{E/2m}$                       (3)  $\sqrt{E/2m}$                       (4)  $c\sqrt{2mE}$

**Ans: (1)**

36. A sphere of radius  $R$  is cut from a larger solid sphere of radius  $2R$  as shown in the figure. The ratio of the moment of inertia of the smaller sphere to that of the rest part of the sphere about the  $Y$ -axis is :



- (1)  $\frac{7}{57}$   
(2)  $\frac{7}{64}$   
(3)  $\frac{7}{8}$   
(4)  $\frac{7}{40}$

**Ans: (1)**



37. An electron (mass  $9 \times 10^{-31}$  kg and charge  $1.6 \times 10^{-19}$  C) moving with speed  $c/100$  ( $c$  = speed of light) is injected into a magnetic field  $\vec{B}$  of magnitude  $9 \times 10^{-4}$  T perpendicular to its direction of motion. We wish to apply an uniform electric field  $\vec{E}$  together with the magnetic field so that the electron does not deflect from its path. Then (speed of light  $c = 3 \times 10^8$  ms $^{-1}$ )

- (1)  $\vec{E}$  is parallel to  $\vec{B}$  and its magnitude is  $27 \times 10^2$  V m $^{-1}$
- (2)  $\vec{E}$  is parallel to  $\vec{B}$  and its magnitude is  $27 \times 10^4$  V m $^{-1}$
- (3)  $\vec{E}$  is perpendicular to  $\vec{B}$  and its magnitude is  $27 \times 10^4$  V m $^{-1}$
- (4)  $\vec{E}$  is perpendicular to  $\vec{B}$  and its magnitude is  $27 \times 10^2$  V m $^{-1}$

**Ans: (3)**

38. The electric field in a plane electromagnetic wave is given by  $E_z = 60 \cos(5x + 1.5 \times 10^9 t)$  V/m. Then expression for the corresponding magnetic field is (here subscripts denote the direction of the field) :

- (1)  $B_z = 60 \cos(5x + 1.5 \times 10^9 t)$  T
- (2)  $B_y = 60 \sin(5x + 1.5 \times 10^9 t)$  T
- (3)  $B_y = 2 \times 10^{-7} \cos(5x + 1.5 \times 10^9 t)$  T
- (4)  $B_x = 2 \times 10^{-7} \cos(5x + 1.5 \times 10^9 t)$  T

**Ans: (3)**

39. A body weighs 48 N on the surface of the earth. The gravitational force experienced by the body due to the earth at a height equal to one-third the radius of the earth from its surface is:

- (1) 32 N
- (2) 36 N
- (3) 16 N
- (4) 27 N

**Ans: (4)**

40. An unpolarized light beam travelling in air is incident on a medium of refractive index 1.73 at Brewster's angle. Then-

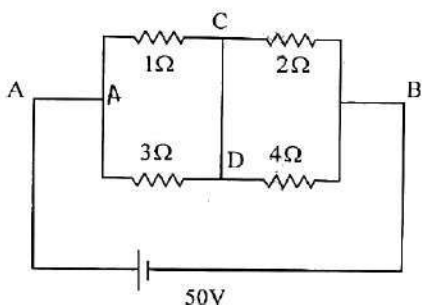
- (1) both reflected and transmitted light are perfectly polarized with angles of reflection and refraction close to  $60^\circ$  and  $30^\circ$ , respectively.
- (2) transmitted light is completely polarized with angle of refraction close to  $30^\circ$
- (3) reflected light is completely polarized and the angle of reflection is close to

60°

(4) reflected light is partially polarized and the angle of reflection is close to 30°

**Ans: (3)**

41. A constant voltage of 50 V is maintained between the points A and B of the circuit shown in the figure. The current through the branch CD of the circuit is :



- (1) 2.5 A  
(2) 3.0 A  
(3) 1.5 A  
(4) 2.0 A

**Ans: (4)**

42. The plates of a parallel plate capacitor are separated by (d) Two slabs of different dielectric constant  $K_1$  and  $K_2$  with thickness  $\frac{3}{8}d$  and  $\frac{d}{2}$ , respectively are inserted in the capacitor. Due to this, the capacitance become two times larger than when there is nothing between the plates.

If  $K_1 = 1.25K_2$ , the value of  $K_1$  is :

- (1) 1.60  
(2) 1.33  
(3) 2.66  
(4) 2.33

**Ans: (3)**

43. Consider the diameter of a spherical object being measured with the help of a Vernier callipers. Suppose its 10 Vernier Scale Divisions (V.S.D.) are equal to its 9 Main Scale Divisions (M.S.D.). The least division in the M.S. is 0.1 cm and the zero of V.S. is at  $x = 0.1$  cm when the jaws of Vernier callipers are closed. If the main scale reading for the diameter is  $M = 5$  cm and the number of coinciding vernier division is 8, the measured diameter after zero error correction, is
- (1) 4.98 cm



- (2) 5.00 cm
- (3) 5.18 cm
- (4) 5.08 cm

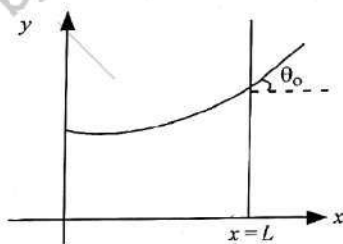
**Ans: (1)**

44. A 2 amp current is flowing through two different small circular copper coils having radii ratio (1 : 2) The ratio of their respective magnetic moments will be

- (1) 2 : 1
- (2) 4 : 1
- (3) 1 : 4
- (4) 1 : 2

**Ans: (3)**

45. Consider a water tank shown in the figure. It has one wall at  $x = L$  and can be taken to be very wide in the  $z$  direction. When filled with a liquid of surface tension  $S$  and density  $\rho$ , the liquid surface makes angle  $\theta_0$  ( $\theta_0 \ll 1$ ) with the  $x$  axis at  $x = L$ . If  $y(x)$  is the height of the surface then the equation for  $y(x)$  is :



(take  $\theta(x) = \sin \theta(x) = \tan \theta(x) = \frac{dy}{dx}$ ,  $g$  is the acceleration due to gravity)

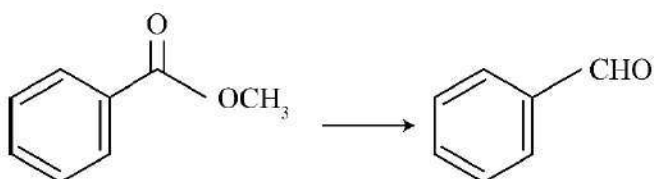
- (1)  $\frac{d^2y}{dx^2} = \sqrt{\frac{\rho g}{S}}$
- (2)  $\frac{dy}{dx} = \sqrt{\frac{\rho g}{S}} x$
- (3)  $\frac{d^2y}{dx^2} = \frac{\rho g}{S} x$
- (4)  $\frac{d^2y}{dx^2} = \frac{\rho g}{S} y$

**Ans: (2 or 4)**



**CHEMISTRY**

46. Identify the suitable reagent for the following conversion.



- (1) (i)  $\text{NaBH}_4$ , (ii)  $\text{H}^+/\text{H}_2\text{O}$                       (2)  $\text{H}_2/\text{Pd} - \text{BaSO}_4$   
(3) (i)  $\text{LiAlH}_4$ , (ii)  $\text{H}^+/\text{H}_2\text{O}$                       (4) (i)  $\text{AlH}(\text{iBu})_2$  (ii)  $\text{H}_2\text{O}$

**Ans: (4)**

47. The correct order of decreasing acidity of the following aliphatic acids is :

- (1)  $\text{HCOOH} > \text{CH}_3\text{COOH} > (\text{CH}_3)_2\text{CHCOOH} > (\text{CH}_3)_3\text{CCOOH}$   
(2)  $\text{HCOOH} > (\text{CH}_3)_3\text{CCOOH} > (\text{CH}_3)_2\text{CHCOOH} > \text{CH}_3\text{COOH}$   
(3)  $(\text{CH}_3)_3\text{CCOOH} > (\text{CH}_3)_2\text{CHCOOH} > \text{CH}_3\text{COOH} > \text{HCOOH}$   
(4)  $\text{CH}_3\text{COOH} > (\text{CH}_3)_2\text{CHCOOH} > (\text{CH}_3)_3\text{CCOOH} > \text{HCOOH}$

**Ans: (1)**

48. Which one of the following reactions does NOT belong to "Lassaigne's test"?

- (1)  $\text{Na} + \text{X} \xrightarrow{\Delta} \text{NaX}$                       (2)  $2\text{CuO} + \text{C} \xrightarrow{\Delta} 2\text{Cu} + \text{CO}_2$   
(3)  $\text{Na} + \text{C} + \text{N} \xrightarrow{\Delta} \text{NaCN}$                       (4)  $2\text{Na} + \text{S} \xrightarrow{\Delta} \text{Na}_2\text{S}$

**Ans: (2)**

49. If the rate constant of reaction is  $0.03 \text{ s}^{-1}$ , how much time does it take for  $7.2 \text{ mol L}^{-1}$  concentration of the reactant to get reduced to  $0.9 \text{ mol L}^{-1}$  ?  
(Given:  $\log 2 = 0.301$  )

- (1) 210 s                      (2) 21.0 s                      (3) 69.3 s                      (4) 23.1 s

**Ans: (3)**

50. Given below are two statements :

Statement I : A hypothetical diatomic molecule with bond order zero is quite stable.

statement II : As bond order increases, the bond length increases.

In the light of the above statements, choose the most appropriate answer from the options given below :

- (1) Statement I is true but Statement II is false
- (2) Statement I is false but Statement II is true
- (3) Both Statement I and Statement II are true
- (4) Both Statement I and Statement II are false

**Ans: (4)**

51. Out of the following complex compounds, which of the compound will be having the minimum conductance in solution?

- (1)  $[\text{Co}(\text{NH}_3)_6]\text{Cl}_3$
- (2)  $[\text{Co}(\text{NH}_3)_5\text{CH}_2]\text{Cl}$
- (3)  $[\text{Co}(\text{NH}_3)_3\text{Cl}_3]$
- (4)  $[\text{Co}(\text{NH}_3)_4\text{Cl}_2]$



**Ans: (3 or 4)**

52. Which of the following aqueous solution will exhibit highest boiling point?

- (1)  $0.01\text{MNa}_2\text{SO}_4$
- (2)  $0.015\text{M C}_6\text{H}_{12}\text{O}_6$
- (3)  $0.01\text{ M Urea}$
- (4)  $0.01\text{M KNO}_3$

**Ans: (1)**

53. Given below are two statements : one is labelled as Assertion (A) and the other is labelled as Reason (R).

Assertion (A) :  I undergoes  $\text{SN}_2$  reaction faster than  Cl.

Reason (R) : Iodine is a better leaving group because of its large size.

In the light of the above statements, choose the correct answer from the options given below

- (1) A is true but R is false
- (2) A is false but R is true
- (3) Both A and R are true and R is the correct explanation of A
- (4) Both A and R are true but R is not the correct explanation of A

**Ans: (3)**

54. Consider the following compounds :  $\underline{\text{K}}\text{O}_2$ ,  $\text{H}_2\underline{\text{O}}_2$  and  $\text{H}_2\underline{\text{S}}\text{O}_4$ .

The oxidation states of the underlined elements in them are, respectively,

- (1) +1, -2, and +4
- (2) +4, -4, and +6
- (3) +1, -1, and +6
- (4) +2, -2, and +6

**Ans: (3)**



55. Match List - I with List - II

**List-I**

- A. Haber process
- B. Wacker oxidation
- C. Wilkinson catalyst
- D. Ziegler catalyst

**List-II**

- I. Fe catalyst
- II.  $\text{PdCl}_2$
- III.  $[(\text{PPh}_3)_3\text{RhCl}]$
- IV.  $\text{TiCl}_4$  with  $\text{Al}(\text{CH}_3)_3$

Choose the correct answer from the options given below :

- (1) A-I, B-II, C-III, D-IV
- (2) A-I, B-IV, C-III, D-II
- (3) A-I, B-II, C-IV, D-III
- (4) A-II, B-III, C-I, D-IV

**Ans: (1)**

56. Given below are two statements :

Statement I : Like nitrogen that can form ammonia, arsenic can form arsine.

Statement II : Antimony cannot form antimony pentoxide.

In the light of the above statements, choose the most appropriate answer from the options given below :

- (1) Statement I is correct, but Statement II is incorrect
- (2) Statement I is incorrect, but Statement II is correct
- (3) Both Statement and Statement II are correct
- (4) Both Statement I and Statement II are incorrect

**Ans: (1)**

57. Given below are two statements :

Statement I : Ferromagnetism is considered as an extreme form of paramagnetic.

Statement II : The number of unpaired electrons in a  $\text{Cr}^{2+}$  ion ( $Z = 24$ ) is the same as that of a  $\text{Nd}^{3+}$  ion ( $Z = 60$ ).

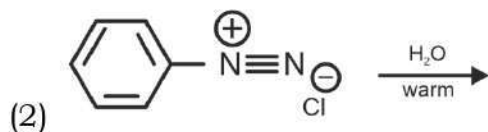
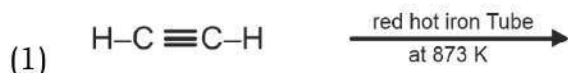
In the light of the above statements, choose the correct answer from the options given below :

- (1) Statement I is true but Statement II is false
- (2) Statement I is false but Statement II is true
- (3) Both Statement I and Statement II are true
- (4) Both Statement I and Statement II are false

**Ans: (3)**



58. Which one of the following reactions does NOT give benzene as the product?



**Ans: (2)**

59. Match **List-I** with **List-II**

List-I		List-II	
A.	$\text{XeO}_3$	I.	$\text{sp}^3\text{d}$ ; linear
B.	$\text{XeF}_2$	II.	$\text{sp}^3$ ; pyramidal
C.	$\text{XeOF}_4$	III.	$\text{sp}^3\text{d}^3$ ; distorted octahedral
D.	$\text{XeF}_6$	IV.	$\text{sp}^3\text{d}^2$ ; square pyramidal

Choose the **correct** answer from the options given below :

(1) A-IV, B-II, C-III, D-I

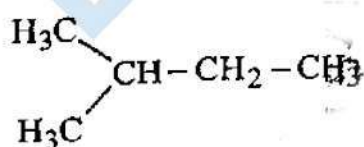
(2) A-IV, B-II, C-I, D-III

(3) A-II, B-I, C-IV, D-III

(4) A-II, B-I, C-III, D-IV

**Ans: (3)**

60. How many products (including stereoisomers) are expected from monochlorination of the following compound?



(1) 5

(2) 6

(3) 2

(4) 3

**Ans: (2)**

61. Which of the following statements are true?
- A. Unlike Ga that has a very high melting point, Cs has a very low melting point.
- B. On Pauling scale, the electronegativity values of N and Cl are not the same.
- C. Ar,  $K^+$ ,  $Cl^-$ ,  $Ca^{2+}$ , and  $S^{2-}$  are all isoelectronic species.
- D. The correct order of the first ionization enthalpies of Na, Mg, Al, and Si is  $Si > Al > Mg > Na$ .
- E. The atomic radius of Cs is greater than that of Li and Rb.
- Choose the correct answer from the options given below :

- (1) C and D only  
(2) A, C, and E only  
(3) A, B, and E only  
(4) C and E only

**Ans: (4)**

62. The standard heat of formation, in kcal/mol of  $Ba^{2+}$  is :  
[Given : standard heat of formation of  $SO_4^{2-}$  ion (aq) =  $-216 \text{ kcal/mol}$ , standard heat of crystallization of  $BaSO_4(s)$  =  $-4.5 \text{ kcal/mol}$ , standard heat of formation of  $BaSO_4(s)$  =  $-349 \text{ kcal/mol}$ ]
- (1)  $+133.0$       (2)  $+220.5$       (3)  $-128.5$       (4)  $-133.0$

**Ans: (3)**

63.

Match List - I with List - II

**List-I**

**List-II**

(Example)

(Type of Solution)

A. Humidity

I. Solid in solid

B. Alloys

II. Liquid in gas

C. Amalgams

III. Solid in gas

D. Smoke

IV. Liquid in solid

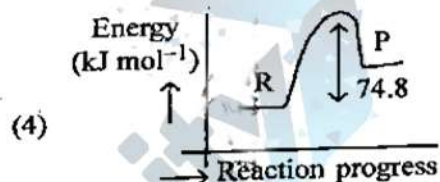
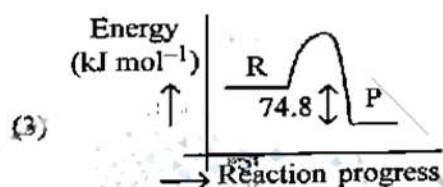
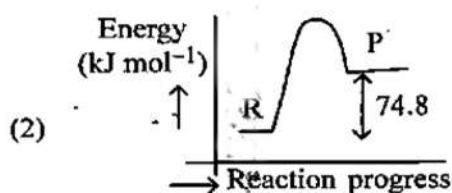
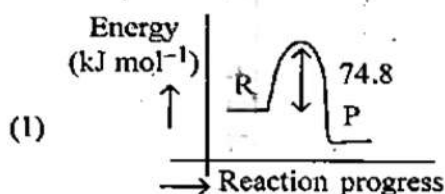
Choose the correct answer from the options given below :

- (1) A-III, B-I, C-IV, D-II  
(2) A-III, B-II, C-I, D-IV  
(3) A-II, B-IV, C-I, D-III  
(4) A-II, B-I, C-IV, D-III

**Ans: (4)**

64.  $\text{C(s)} + 2\text{H}_2\text{(g)} \rightarrow \text{CH}_4\text{(g)}$ ;  $\Delta H = -74.8 \text{ kJ mol}^{-1}$  Which of the following diagrams gives an accurate representation of the above reaction?

[R  $\rightarrow$  reactants; P  $\rightarrow$  products]



**Ans: (3)**

65. Sugar 'X'
- is found in honey
  - is a keto sugar.
  - exists in  $\alpha$  and  $\beta$ -anomeric forms.
  - is laevorotatory

'X' is:

- (1) Maltose                      (2) Sucrose                      (3) D-Glucose                      (4) D-Fructose

**Ans: (4)**



66. Total number of possible isomers (both structural as well as stereoisomers) of cyclic ethers of molecular formula  $C_4H_8O$  is:  
 (1) 10 (2) 11 (3) 6 (4) 8  
**Ans: (1)**
67. For the reaction  $A(g) \rightleftharpoons 2B(g)$ , the backward reaction rate constant is higher than the forward reaction rate constant by a factor of 2500, at 1000 K. [Given :  $R = 0.0831 \text{ L atm mol}^{-1} \text{ K}^{-1}$ ]  $K_b = 2500 K_f$  for the reaction at 1000 K is  
 (1) 0.033 (2) 0.021  
 (3) 83.1 (4)  $2.077 \times 10^5$   
**Ans: (1)**
68. The ratio of the wavelengths of the light absorbed by a Hydrogen atom when it undergoes  $n = 2 \rightarrow n = 3$  and  $n = 4 \rightarrow n = 6$  transitions, respectively, is  
 (1)  $\frac{1}{9}$  (2)  $\frac{1}{4}$  (3)  $\frac{1}{36}$  (4)  $\frac{1}{16}$   
**Ans: (1)**
69. If the molar conductivity ( $\Lambda_m$ ) of a  $0.050 \text{ mol L}^{-1}$  solution of a monobasic weak acid is  $90 \text{ S cm}^2 \text{ mol}^{-1}$ , its extent (degree) of dissociation will be  
 [Assume  $\Lambda_+^\circ = 349.6 \text{ S cm}^2 \text{ mol}^{-1}$  and  $\Lambda_-^\circ = 50.4 \text{ S cm}^2 \text{ mol}^{-1}$ .]  
 (1) 0.225 (2) 0.215 (3) 0.115 (4) 0.125  
**Ans: (1)**
70. 5 moles of liquid X and 90 moles of liquid Y make a solution having a vapour pressure of 70 torr. The vapour pressures of pure X and Y are 63 torr and 78 torr respectively. Which of the following is true regarding the described solution?  
 (1) The solution is ideal.  
 (2) The solution has volume greater than the sum of individual volumes.  
 (3) The solution shows positive deviation.  
 (4) The solution shows negative deviation.  
**Ans: (4)**
71. Among the following, choose the ones with equal number of atoms.  
 A. 212 g of  $Na_2CO_3$  (s) [molar mass = 106 g]  
 B. 248 g of  $Na_2O$ (s) [molar mass = 62 g]  
 C. 240 g of  $NaOH$  (s) [molar mass = 40 g]

D. 12 g of  $H_2$  (g) [molar mass = 2 g]

E. 220 g of  $CO_2$  (g) [molar mass = 44 g]

Choose the correct answer from the options given below :

(1) B, C, and D only

(2) B, D, and E only

(3) A, B, and C only

(4) A, B, and D only

**Ans: (4)**

72. Which of the following are paramagnetic?

A.  $[NiCl_4]^{2-}$

B.  $Ni(CO)_4$

C.  $[Ni(CN)_4]^{2-}$

D.  $[Ni(H_2O)_6]^{2+}$

E.  $Ni(PPh_3)_4$

Choose the correct answer from the options given below:

(1) A and D only

(2) A, D and E only

(3) A and C only

(4) B and E only

**Ans: (1)**

73. If the half-life ( $t_{1/2}$ ) for a first order reaction is 1 minute, then the time required for 99.9% completion of the reaction is closest to:

(1) 5 minutes

(2) 10 minutes

(3) 2 minutes

(4) 4 minutes

**Ans: (2)**

74. Energy and radius of first Bohr orbit of  $He^+$  and  $Li^{2+}$  are  
[Given  $R_H = 2.18 \times 10^{-18}$  J,  $a_0 = 52.9$  pm]

(1)  $E_n(Li^{2+}) = 19.62 \times 10^{-16}$  J;  $r_n(Li^{2+}) = 17.6$  pm

$E_n(He^+) = 8.72 \times 10^{-16}$  J;  $r_n(He^+) = 26.4$  pm

(2)  $E_n(Li^{2+}) = -8.72 \times 10^{-16}$  J;  $r_n(Li^{2+}) = 17.6$  pm

$E_n(He^+) = -19.62 \times 10^{-16}$  J;  $r_n(He^+) = 17.6$  pm

(3)  $E_n(Li^{2+}) = 4819.62 \times 10^{-18}$  J;  $r_n(Li^{2+}) = 17.6$  pm

$E_n(He^+) = 8.872 \times 10^{-18}$  J;  $r_n(He^+) = 26.4$  pm

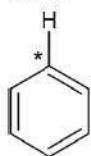
(4)  $E_n(Li^{2+}) = -8.72 \times 10^{-18}$  J;  $r_n(Li^{2+}) = 26.4$  pm

$E_n(He^+) = -19.62 \times 10^{-18}$  J;  $r_n(He^+) = 17.6$  pm

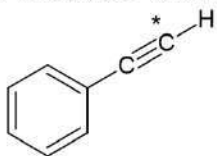
**Ans: (3)**



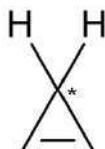
75. Among the given compounds I-III, the correct order of bond dissociation energy of C – H bond marked with \* is:



I



II



III

- (1) III > II > I  
(2) II > III > I  
(3) II > I > III  
(4) I > II > III

**Ans: (3)**

76. Dalton's Atomic theory could not explain which of the following?

- (1) Law of multiple proportion  
(2) Law of gaseous volume  
(3) Law of conservation of mass  
(4) Law of constant proportion

**Ans: (2)**

77. Identify the correct orders against the property mentioned

- A.  $\text{H}_2\text{O} > \text{NH}_3 > \text{CHCl}_3$  - dipole moment  
B.  $\text{XeF}_4 > \text{XeO}_3 > \text{XeF}_2$  - number of lone pairs on central atom  
C.  $\text{O} - \text{H} > \text{C} - \text{H} > \text{N} - \text{O}$  - bond length  
D.  $\text{N}_2 > \text{O}_2 > \text{H}_2$  - bond enthalpy

Choose the correct answer from the options given below :

- (1) A, C only  
(2) B, C only  
(3) A, D only  
(4) B, D only

**Ans: (3)**

78. Match **List I** with **List II**.

	<b>List I</b> (Name of Vitamin)		<b>List II</b> (Deficiency disease)
A.	Vitamin B <sub>12</sub>	I.	Cheilosis
B.	Vitamin D	II.	Convulsions
C.	Vitamin B <sub>2</sub>	III.	Rickets
D.	Vitamin B <sub>6</sub>	IV.	Pernicious anaemia



Choose the correct answer from the options given below :

- (1) A-II, B-III, C-I, D-IV                      (2) A-IV, B-III, C-II, D-I  
(3) A-I, B-III, C-II, D-IV                      (4) A-IV, B-III, C-I, D-II

**Ans: (4)**

79. The correct order of decreasing basic strength of the given amines is:

- (1) N-ethylethanamine > ethanamine > N-methylaniline > benzenamine  
(2) benzenamine > ethanamine > N-methylaniline > N-ethylethanamine  
(3) -methylaniline > benzenamine > ethanamine > N-ethylethanamine  
(4) N-ethylethanamine > ethanamine > benzenamine > N-methylaniline

**Ans: (1)**

80. The correct order of the wavelength of light absorbed by the following complexes is,

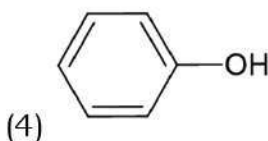
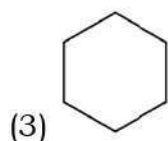
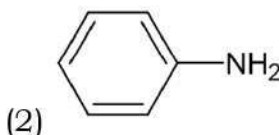
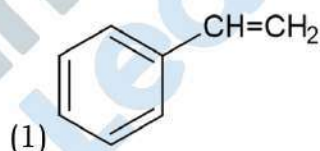
- A.  $[\text{Co}(\text{NH}_3)_6]^{3+}$   
B.  $[\text{Co}(\text{CN})_6]^{3-}$   
C.  $[\text{Cu}(\text{H}_2\text{O})_4]^{2+}$   
D.  $[\text{Ti}(\text{H}_2\text{O})_6]^{3+}$

Choose the correct answer from the options given below:

- (1)  $C < D < A < B$                       (2)  $C < A < D < B$   
(3)  $B < D < A < C$                       (4)  $B < A < D < C$

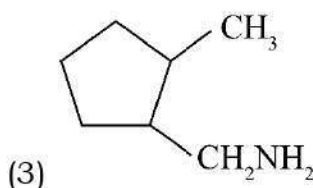
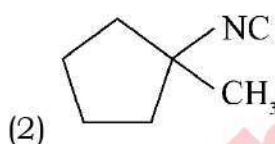
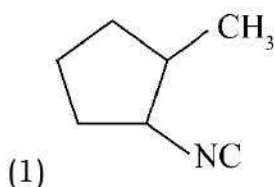
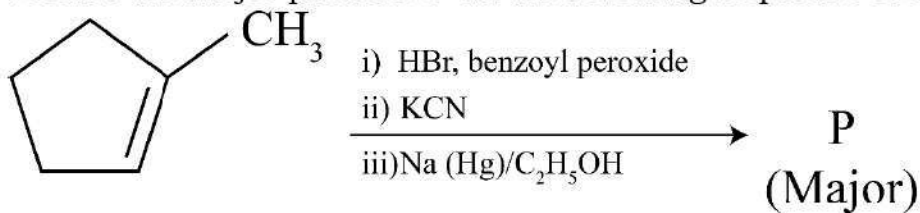
**Ans: (4)**

81. Which one of the following compounds **does not** decolourize bromine water?



**Ans: (3)**

82. Predict the major product 'P' in the following sequence of reactions -



**Ans: (3)**

83. Match **List I** with **List II**

List-I (Mixture)		List-I (Method of Separation)	
A.	$\text{CHCl}_3 + \text{C}_6\text{H}_5\text{NH}_2$	I.	Distillation under reduced pressure
B.	Crude oils in petroleum industry	II.	Steam distillation
C.	Glycerol from spent-lye	III.	Fractional distillation
D.	Aniline - water	IV.	Simple distillation

Choose the correct answer from the options given below :

(1) A-III, B-IV, C-I, D-II

(2) A-III, B-IV, C-II, D-I

(3) A-IV, B-III, C-I, D-II

(4) A-IV, B-III, C-II, D-I

**Ans: (3)**

84. Which among the following electronic configurations belong to main group elements?

- A.  $[\text{Ne}]3s^1$
- B.  $[\text{Ar}]3d^34s^2$
- C.  $[\text{Kr}]4d^{10}5s^25p^5$
- D.  $[\text{Ar}]3d^{10}4s^1$
- E.  $[\text{Rn}]5f^06d^27s^2$

Choose the **correct** answer from the option given below:

- (1) D and E only
- (2) A, C and D only
- (3) B and E only
- (4) A and C only

**Ans: (4)**

85. Which one of the following compounds can exist as *cis-trans* isomers?

- (1) 1,1-Dimethylcyclopropane
- (2) 1,2-Dimethylcyclohexane
- (3) Pent-1-ene
- (4) 2-Methylhex-2-ene

**Ans: (2)**

86. Phosphoric acid ionizes in three steps with their ionization constant values

$K_{a1}$ ,  $K_{a2}$  and  $K_{a3}$ , respectively, while K is the overall ionization constant. Which of the following statements are true?

- A.**  $\log K = \log K_{a1} + \log K_{a2} + \log K_{a3}$
- B.**  $\text{H}_3\text{PO}_4$  is a stronger acid than  $\text{H}_2\text{PO}_4^-$  and  $\text{HPO}_4^{2-}$
- C.**  $K_{a1} > K_{a2} > K_{a3}$
- D.**  $K_{a1} = (K_{a2} + K_{a3})/2$

Choose the correct answer from the options given below:

- (1) B, C and D only
- (2) A, B and C only
- (3) A and B only
- (4) A and C only

**Ans: (2)**



87. Match **List – I** with **List – II**

List I (Ion)		List II (Group Number in Cation Analysis)	
A.	$\text{Co}^{2+}$	I.	Group-I
B.	$\text{Mg}^{2+}$	II.	Group-III
C.	$\text{Pb}^{2+}$	III.	Group-IV
D.	$\text{Al}^{3+}$	IV.	Group-VI

 Choose the **correct** answer from the options given below:

(1) A-III, B-II, C-IV, D-I

(2) A-III, B-II, C-I, D-IV

(3) A-III, B-IV, C-II, D-I

(4) A-III, B-IV, C-I, D-II

**Ans: (4)**

88. Higher yield of NO in

 $\text{N}_2(\text{g}) + \text{O}_2(\text{g}) \rightleftharpoons 2\text{NO}(\text{g})$  can be obtained at  
 $[\Delta H \text{ of the reaction} = +180.7 \text{ kJ mol}^{-1}]$ 

A. higher temperature

B. lower temperature

 C. higher concentration of  $\text{N}_2$ 

 D. higher concentration of  $\text{O}_2$ 

 Choose the **correct** answer from the options given below:

(1) B, C, D only

(2) A, C, D only

(3) A, D only

(4) B, C only

**Ans: (2)**

89. Given below are two statements:

**Statement I:** Benzenediazonium salt is prepared by the reaction of aniline with nitrous acid at 273–278 K. It decomposes easily in the dry state.

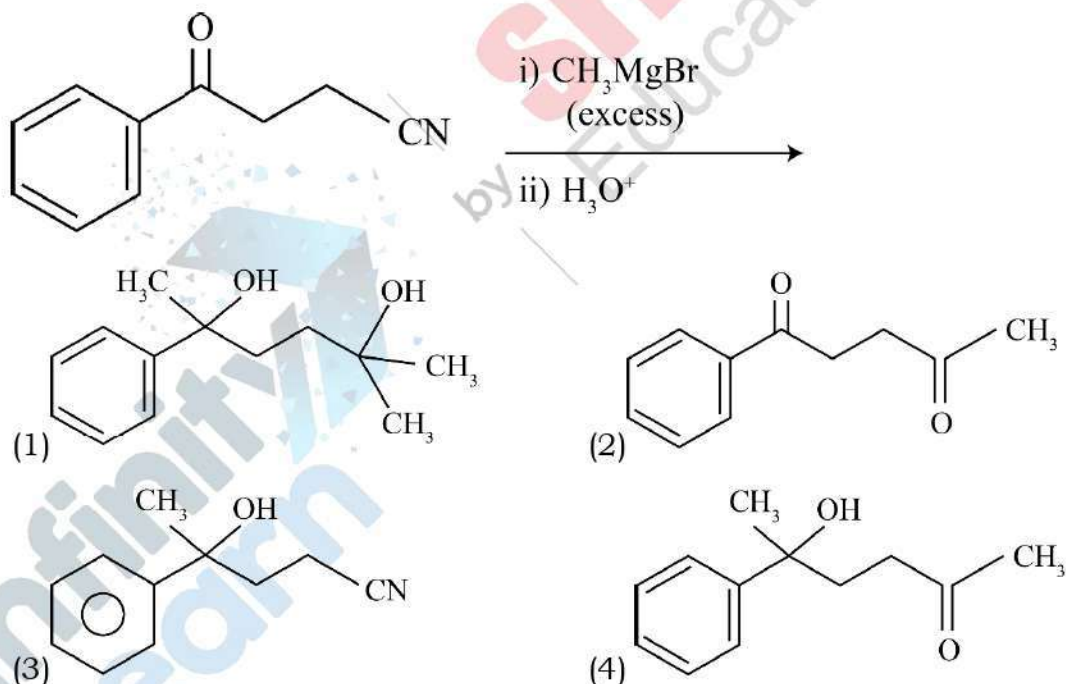
**Statement II:** Insertion of iodine into the benzene ring is difficult and hence iodobenzene is prepared through the reaction of benzenediazonium salt with KI.

In the light of the above statements, choose the **most appropriate** answer from the options given below:

- (1) Statement I is correct but Statement II is incorrect
- (2) Statement I is incorrect but Statement II is correct
- (3) Both Statement I and Statement II are correct
- (4) Both Statement I and Statement II are incorrect

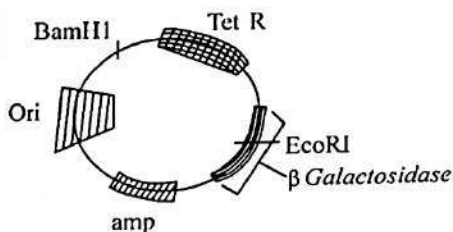
**Ans: (3)**

90. The major product of the following reaction is:



**Ans: (1)**

**BIOLOGY**



91.

In the above represented plasmid an alien piece of DNA is inserted at EcoRI site. Which of the following strategies will be chosen to select the recombinant colonies?

- (1) White color colonies will be selected.
- (2) Blue color colonies grown on ampicillin plates can be selected.
- (3) Using ampicillin & tetracyclin containing medium plate.
- (4) Blue color colonies will be selected.

**Ans: (1)**

92. The protein portion of an enzyme is called :

- (1) Apoenzyme
- (2) Prosthetic group
- (3) Cofactor
- (4) Coenzyme

**Ans: (1)**

93. Given below are two statements:

**Statement I :** The primary source of energy In an ecosystem is solar energy.

**Starement II :** The rate of production of organic matter during photosynthesis in an ecosystem is called net primary productivity (NPP).

In the light of the above statements, choose the most appropriate answer from the options given below :

- (1) Statement I is correct but statement II is incorrect
- (2) Statement I is incorrect but statement II is correct
- (3) Both statement I and statement II are correct
- (4) Both statement I and statement II are incorrect

**Ans: (1)**



94. Given below are two statements : One is labelled as Assertion (A) and the other is labelled as Reason (R).

**Assertion (A)** : A typical unfertilised, angiosperm embryo sac at maturity is 8 nucleate and 7-celled.

**Reason (R)**: The egg apparatus has 2 polar nuclei.

In the light of the above statements, choose the correct answer from the options given below :

- (1) A is true but R is false
- (2) A is false but R is true
- (3) Both A and R are true and R is the correct explanation of A
- (4) Both A and R are true but R is NOT the correct explanation of A

**Ans: (1)**

95. Neoplastic characteristics of cells refer to :

- A. A mass of proliferating cell
- B. Rapid growth of cells
- C. Invasion and damage to the surrounding tissue
- D. Those confined to original location

Choose the **correct** answer from the options given below :

- (1) A, B, D only    (2) B, C, D only    (3) A, B only    (4) A, B, C only

**Ans: (4)**

96. Which one of the following is the characteristic feature of gymnosperms ?

- (1) Seeds are absent
- (2) Gymnosperms have flowers for reproduction
- (3) Seeds are enclosed in fruits.
- (4) Seeds are naked.

**Ans: (4)**

97. Match List-I with List-II

List – I

A. Progesterone

B. Relaxin

C. Melanocyte stimulating hormone

D. Catecholamines

List – II

I. Pars intermedia

II. Ovary

III. Adrenal

IV. Corpus luteum

Choose the correct answer from the options given below :

(1) A-II, B-IV, C-I, D-III

(2) A-III, B-II, C-IV, D-I

(3) A-IV, B-II, C-I, D-III

(4) A-IV, B-II, C-III, D-I

**Ans: (3)**

98. Which chromosome in the human genome has the highest number of genes ?

(1) Chromosome 1

(2) Chromosome 10

(3) Chromosome X

(4) Chromosome Y

**Ans: (1)**

99. Which of the following statements about RuBisCO is true ?

(1) It is an enzyme involved in the photolysis of water.

(2) It catalyzes the carboxylation of RuBP.

(3) It is active only in the dark.

(4) It has higher affinity for oxygen than carbon dioxide.

**Ans: (2)**

100. The first menstruation is called :

(1) Diapause

(2) Ovulation

(3) Menopause

(4) Menarche

**Ans: (4)**

101. Which of the following genetically engineered organisms was used by Eli Lilly to prepare human insulin ?

(1) Virus

(2) Phage

(3) Bacterium

(4) Yeast

**Ans: (3)**



102. Given below are two statements : one is labelled as Assertion (A) and the other is labelled as Reason (R)

**Assertion (A) :** All vertebrates are chordates but all chordates are not vertebrate.

**Reason (R) :** The members of subphylum vertebrata possess notochord during the embryonic period, the notochord is replaced by a cartilaginous or bony vertebral column in adults.

In the light of the above statements, choose the correct answer from the options given below :

- (1) A is true but R is false
- (2) A is false but R is true
- (3) Both A and R are true and R is the correct explanation of A
- (4) Both A and R are true but R is not the correct explanation of A

**Ans: (3)**

103. What is the main function of the spindle fibers during mitosis ?

- (1) To repair damaged DNA
- (2) To regulate cell growth
- (3) To separate the chromosomes
- (4) To synthesize new DNA

**Ans: (3)**

104. Match List I with List II :

List – I		List – II	
A	Alfred Hershey and Martha Chase	I	Streptococcus pneumoniae
B	Euchromatin	II	Densely packed and dark-stained
C	Frederick Griffith	III	Loosely packed and light-stained
D	Heterochromatin	IV	DNA as genetic material

Choose the correct answer from the options given below :

- (1) A–IV, B–III, C–I, D–II
- (2) A–III, B–II, C–IV, D–I
- (3) A–II, B–IV, C–I, D–III
- (4) A–IV, B–II, C–I, D–III

**Ans: (1)**



105. Match List I with List II.

**List – I**

- A. Adenosine
- B. Adenylic acid
- C. Adenine
- D. Alanine

**List – II**

- I. Nitrogen base
- II. Nucleotide
- III. Nucleoside
- IV. Amino acid

Choose the option with all correct matches.

- (1) A–III, B–II, C–I, D–IV
- (2) A–II, B–III, C–I, D–IV
- (3) A–III, B–IV, C–II, D–I
- (4) A–III, B–II, C–IV, D–I

**Ans: (1)**

106. In frog, the Renal portal system is a special venous connection that acts to link :

- (1) Kidney and intestine
- (2) Kidney and lower part of body
- (3) Liver and intestine
- (4) Liver and kidney

**Ans: (2)**

107. Which of the following are the post– transcriptional events in an eukaryotic cell ?

- A. Transport of pre-mRNA to cytoplasm prior to splicing
- B. Removal of introns and joining of exons.
- C. Addition of methyl group at 5' end of hnRNA.
- D. Addition of adenine residues at 3' end of hnRNA.
- E. Base pairing of two complementary RNAs.

Choose the correct answer from the options given below :

- (1) B, C, E only
- (2) C, D, E only
- (3) A, B, C only
- (4) B, C, D only

**Ans: (4)**

108. Polymerase chain reaction (PCR) amplifies DNA following the equation.

- (1)  $2n + 1$                       (2)  $2N^2$                       (3)  $N^2$                       (4)  $2^n$

**Ans: (4)**

109. Given below are two statements : One is labelled as Assertion (A) and the other is labelled as Reason (R)

**Assertion (A) :** Both wind and water pollinated flower's are not very colourful and do not produce nectar.

**Reason (R) :** The flowers produce enormous amount of pollen grains in wind and water pollinated flowers.

In the light of the above statements, choose the correct answer from the options given below:

- (1) A is true but R is false  
(2) A is false but R is true  
(3) Both A and R are true and R is the correct explanation of A  
(4) Both A and R are true but R is NOT the correct explanation of A

**Ans: (4)**

110. Epiphytes that are growing on a mango branch is an example of which of the following?

- (1) Predation    (2) Amensalism  
(3) Commensalism                                      (4) Mutualism

**Ans: (3)**

111. Find the correct statements :

- A. In human pregnancy, the major organ systems are formed at the end of 12 weeks.  
B. In human pregnancy the major organ systems are formed at the end of 8 weeks.  
C. In human pregnancy heart is formed after one month of gestation.  
D. In human pregnancy, limbs and digits develop by the end of second month.  
E. In human pregnancy the appearance of hair is usually observed in the fifth month.

Choose the correct answer from the options given below :

(1) B, C, D and E Only

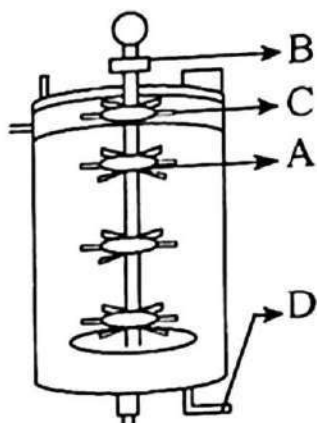
(2) A, C, D and E Only

(3) A and E Only

(4) B and C Only

**Ans: (2)**

112. Identify the part of a bio-reactor which is used as a foam braker from the given figure.



(1) D

(2) C

(3) A

(4) B

**Ans: (2)**

113. Frogs respire in water by skin and buccal cavity and on land by skin, buccal cavity and lungs.

Choose the correct answer from the following :

- (1) The statement is false for water but true for land
- (2) The statement is false for both the environment
- (3) The statement is true for water but false for land
- (4) The statement is true for both the environment

**Ans: (1)**

114. Consider the following statements regarding function of adrenal medullary hormones:

- A. It causes pupillary constriction
- B. It is a hyperglycemic hormone
- C. It causes piloerection
- D. It increases strength of heart contraction

Choose the correct answer from the options given below



(1) A, C and D Only

(2) D Only

(3) C and D Only

(4) B, C and D Only

**Ans: (4)**

115. Read the following statements on plant growth and development.

A. Parthenocarp can be induced by auxins.

B. Plant growth regulators can be involved in promotion as well as inhibition of growth.

C. Dedifferentiation is a pre-requisite for re-differentiations

D. Absciscic acid is ap plant growth promoter.

E. Apical dominance promotes the growth of lateral buds.

Choose the option with all correct statements.

(1) A, D, E only

(2) B, D, E only

(3) A, B, C only

(4) A, C, E only

**Ans: (3)**

116. Which of the following hormones released from the pituitary is actually synthesized in the hypothalamus?

(1) Follicle-stimulating hormone (FSH)

(2) Adenocorticotrophic hormone (ACTH)

(3) Luteinizing hormone (LH)

(4) Anti-diuretic hormone (ADH)

**Ans: (4)**

117. Which of the following is an example of non-distilled alcoholic beverage produced by yeast?

(1) Beer

(2) Rum

(3) Whisky

(4) Brandy

**Ans: (1)**

118. What is the pattern of inheritance for polygenic trait?

(1) Autosomal dominant pattern

(2) X-linked recessive inheritance pattern

(3) Mendelian inheritance pattern

(4) Non-mendelian inheritance pattern

**Ans: (4)**

119. Match List - I with List - II.

**List - I**

- A. Head
- B. Middle piece
- C. Acrosome
- D. Tail

**List - II**

- I. Enzymes
- II. Sperm motility
- III. Energy
- IV. Genetic material

Choose the correct answer from the options given below :

(1) A-III, B-IV, C-II, D-I

(2) A-III, B-II, C-I, D-IV

(3) A-IV, B-III, C-I, D-II

(4) A-IV, B-III, C-II, D-I

**Ans: (3)**

120. Which of the following is an example of a zygomorphic flower?

(1) Pea

(2) Chilli

(3) Petunia

(4) Datura

**Ans: (1)**

121. Which of following-organisms cannot fix nitrogen?

A. Azotobacter

B. Oscillatoria

C. Anabaena

D. Volvox

E. Nostoc

Choose the correct answer from the options given below:

(1) B only

(2) E only

(3) A only

(4) D only

**Ans: (4)**

122. Which one of the following is an example of ex-situ conservation?

(1) Zoos and botanical gardens

(2) Protected areas

(3) National Park

(4) Wildlife Sanctus

**Ans: (1)**

123. Who is known as the father of Ecology in India?

(1) Ram Udar

(2) Birbal Sahni

(3) S. R. Kashyap

(4) Ramdeo Misra

**Ans: (4)**



124. Given below are two statements :

**Statement I** : In the RNA world, RNA is considered the first genetic material evolved to carry out essential life processes. RNA acts as a genetic material and also as a catalyst for some important biochemical reactions in living systems. Being reactive, RNA is unstable.

**Statement II** : DNA evolved from RNA and is a more stable genetic material. Its double helical strands being complementary, resist changes by evolving repairing mechanism.

In the light of the above statements, choose the most appropriate answer from the options given below :

- (1) Statement I is correct but statement II is incorrect
- (2) Statement II is incorrect but statement II is correct
- (3) Both statement I and statement II are correct
- (4) Both statement I and statement II are incorrect

**Ans: (3)**

125. Given below are two statements :

**Statement I** : Transfer RNAs and ribosomal RNA do not interact with mRNA.

**Statement II** : RNA interference (RNAi) takes place in all eukaryotic organisms as a method of cellular defence.

In the light of the above statements, choose the most appropriate answer from the options given below :

- (1) Statement is correct but Statement II is incorrect
- (2) Statement is incorrect but Statement II is correct
- (3) Both Statement I and Statement II are correct
- (4) Both Statement I and Statement II are incorrect

**Ans: (2)**



126. Match List-I with List-II.

List – I

- A. Heart
- B. Kidney
- C. Gastro-intestinal tract
- D. Adrenal Cortex

List – II

- I. Erythropoietin
- II. Aldosterone
- III. Atrial natriuretic factor
- IV. Secretin

Choose the correct answer from the options given below :

- (1) A – I, B – III, C – IV, D – II
- (2) A – III, B – I, C – IV, D – II
- (3) A – II, B = I ? C – III, D – IV
- (4) A – IV, B – III, C – II, D – I

**Ans: (2)**

127. All living members of the class Cyclostomata are :

- (1) Symbiotic
- (2) Ectoparasite
- (3) Free living
- (4) Endoparasite

**Ans: (2)**

128. Streptokinase produced by bacterium Streptococcus is used for

- (1) Liver disease treatment
- (2) Removing clots from blood vessels
- (3) Curd production
- (4) Ethanol production

**Ans: (2)**

129. Role of the water vascular system in Echinoderms is :

- A. Respiration and Locomotion
- B. Excretion and Locomotion
- C. Capture and transport of food
- D. Digestion and Respiration
- E. Digestion and Excretion

Choose the correct answer from the options given below ?

- (1) B and C Only
- (2) B, D and E Only
- (3) A and B Only
- (4) A and C Only

**Ans: (4)**

130. Match List I with List II.

**List-I**

- A. Pteridophyte
- B. Bryophyte
- C. Angiosperm
- D. Gymnosperm

**List-II**

- I. Salvia
- II. Ginkgo
- III. Polytrichum
- IV. Salvinia

Choose the option with all correct matches.

(1) A-III, B-IV, C-I, D-II

(2) A-IV, B-III, C-II, D-I

(3) A-III, B-IV, C-II, D-I

(4) A-IV, B-III, C-I, D-II

**Ans: (4)**

131. Which are correct:

- A. Computed tomography and magnetic resonance imaging detect cancers of internal organs.
- B. Chemotherapeutics drugs are used to kill non-cancerous cells.
- C.  $\alpha$ -interferon activate the cancer patients' immune system and helps in destroying the tumour.
- D. Chemotherapeutic drugs are biological response modifiers.
- E. In the case of leukaemia blood cell counts are decreased.

Choose the correct answer from the options given below:

(1) C and D only

(2) A and C only

(3) B and D only

(4) D and E only

**Ans: (2)**

132. What are the potential drawbacks in adoption of the IVF method?

- A. High fatality risk to mother
- B. Expensive instruments and reagents
- C. Husband/wife necessary for being donors
- D. Less adoption of orphans
- E. Not available in India
- F. Possibility that the early embryo does not survive

Choose the correct answer from the options given below :



(1) A, B, C, D only

(2) A, B, C, E, F only

(3) B, D, F only

(4) A, C, D, F only

**Ans: (3)**

133. Consider the following :

A. The reductive division for the human female gametogenesis starts earlier than that of the male gametogenesis.

B. The gap between the first meiotic division and the second meiotic division is much shorter for males compared to females.

C. The first polar body is associated with the formation of the primary oocyte.

D. Luteinizing Hormone (LH) surge leads to disintegration of the endometrium and onset of menstrual bleeding.

Choose the correct answer from the options given below :

(1) B and D are true

(2) B and C are true

(3) A and B are true

(4) A and C are true

**Ans: (3)**

134. In bryophytes, the gemmae help in which one of the following?

(1) Nutrient absorption

(2) Gaseous exchange

(3) Sexual reproduction

(4) Asexual reproduction

**Ans: (4)**

135. Given below are two statements : one is labelled as Assertion (A) and the other is labelled as Reason (R).

**Assertion (A):** The primary function of the Golgi apparatus is to package the materials made by the endoplasmic reticulum and deliver it to intracellular targets and outside the cell.

**Reason (R):** Vesticles containing materials made by the endoplasmic reticulum fuse with the cis face of the Golgi apparatus, and they are modified and released from the trans face of the Golgi apparatus.

In the light of the above statements, choose the correct answer from the options given below :

(1) A is true but R is false

(2) A is false but R is true



- (3) Both A and R are true and R is the correct explanation of A  
(4) Both A and R are true but R is not the correct explanation of A

**Ans: (3)**

136. Which one of the following statements refers to Reductionist Biology?

- (1) Chemical approach to study and understand living organisms.  
(2) Behavioural approach to study and understand living organisms.  
(3) Physico-chemical approach to study and understand living organisms.  
(4) Physiological approach to study and understand living organisms.

**Ans: (3)**

137. After maturation, in primary lymphoid organs, the lymphocytes migrate for interaction with antigens to secondary lymphoid organ (s) / tissue (s) like:

- A. thymus  
B. bone marrow  
C. spleen  
D. lymph nodes  
E. Peyer's patches

Choose the correct answer from the options given below:

- (1) E, A, B only  
(2) C, D, E only  
(3) B, C, D only  
(4) A, B, C only

**Ans: (2)**

138. Match List I with List II :

**List - I**

- A. The Evil Quartet  
B. Ex situ conservation  
C. Lantana camara  
D. Dodo

**List - II**

- I. Cryopreservation  
II. Alien species invasion  
III. Causes of biodiversity losses  
IV. Extinction

Choose the option with all correct matches.

- (1) A-III, B-IV, C-II, D-I  
(2) A-III, B-II, C-IV, D-I  
(3) A-III, B-II, C-I, D-IV  
(4) A-III, B-I, C-II, D-IV

**Ans: (4)**

139. How many meiotic and mitotic divisions need to occur for the development of a mature female gametophyte from the megaspore mother cell in an angiosperm plant?

- |                             |                              |
|-----------------------------|------------------------------|
| (1) 1 Meiosis and 3 Mitosis | (2) No Meiosis and 2 Mitosis |
| (3) 2 Meiosis and 3 Mitosis | (4) 1 Meiosis and 2 Mitosis  |

**Ans: (1)**

140. Which of the following type of immunity is present at the time of birth and is a nonspecific type of defence in the human body?

- |                            |                      |
|----------------------------|----------------------|
| (1) Cell-mediated Immunity | (2) Humoral Immunity |
| (3) Acquired Immunity      | (4) Innate Immunity  |

**Ans: (4)**

141. Given below are two statements :

**Statement I :** Fig fruit is a non-vegetarian fruit as it has enclosed fig wasps in it.

**Statement II :** Fig wasp and fig tree exhibit mutual relationship as fig wasp completes its life cycle in fig fruit and fig fruit gets pollinated by fig wasp.

In the light of the above statements, choose the most appropriate answer from the options given below :

- (1) Statement I is correct but statement II is incorrect
- (2) Statement I is incorrect but statement II is correct
- (3) Both statement I and statement II are correct
- (4) Both statement I and statement II are incorrect

**Ans: (1 or 4)**

142. Given below are two statements: One is labelled as Assertion (A) and the other is labelled as Reason(R).

**Assertion (A) :** Cells of the tapetum possess dense cytoplasm and generally have more than one nucleus.

**Reason (R) :** Presence of more than one nucleus in the tapetum increases the efficiency of nourishing the developing microspore mother cells.

In light of the above statements, choose the most appropriate answer from the options given below :

- (1) A is true but R is false



(2) A is false but R is true

(3) Both A and R are true and R is the correct explanation of A

(4) Both A and R are true but R is NOT the correct explanation of A

**Ans: (3)**

143. From the statements given below choose the correct option :

A. The eukaryotic ribosomes are 80S and prokaryotic ribosomes are 70S.

B. Each ribosome has two sub-units.

C. The two sub-units of 80S ribosome are 60S and 40S while that of 70S are 50S and 30S.

D. The two sub-units of 80S ribosome are 60S and 20S and that of 70S are 50S and 20S.

E. The two sub-units of 80S are 60S and 30S and that of 70S are 50S and 30S.

(1) A, B, E are true

(2) B, D, E are true

(3) A, B, C are true

(4) A, B, D are true

**Ans: (3)**

144. Which one of the following enzymes contains 'Haem' as the prosthetic group?

(1) Succinate dehydrogenase

(2) Catalase

(3) RuBisCo

(4) Carbonic anhydrase

**Ans: (2)**

145. What is the name of the blood vessel that carries deoxygenated blood from the body to the heart in a frog?

(1) Pulmonary vein

(2) Vena cava

(3) Aorta

(4) Pulmonary artery

**Ans: (2)**

146. Given below are the stages in the life cycle of pteridophytes. Arrange the following stages in the correct sequence.

A. Prothallus stage

B. Meiosis in spore mother cells

C. Fertilisation

D. Formation of archegonia and antheridia in gametophyte.



E. Transfer of antherozoids to the archegonia in presence of water.

Choose the correct answer from the options given below :

(1) D, E, C, A, B

(2) E, D, C, B, A

(3) B, A, D, E, C

(4) B, A, E, C, D

**Ans: (3)**

147. The blue and white selectable markers have been developed which differentiate recombinant colonies from non-recombinant colonies on the basis of their ability to produce colour in the presence of a chromogenic substrate.

Given below are two statements about this method:

**Statement I:** The blue coloured colonies have DNA insert in the plasmid and they are identified as recombinant colonies.

**Statement II :** The colonies without blue colour have DNA insert in the plasmid and are identified as recombinant colonies.

In the light of the above statements, choose the most appropriate answer from the options given below :

(1) Statement I is correct but Statement II is incorrect

(2) Statement I is incorrect but Statement II is correct

(3) Both Statement I and Statement II are correct

(4) Both Statement I and Statement II are incorrect

**Ans: (2)**

148. Which of the following microbes is NOT involved in the preparation of household products?

A. *Aspergillus niger*

B. *Lactobacillus*

C. *Trichoderma polysporum*

D. *Saccharomyces cerevisiae*,

E. *Propionibacterium sharmanii*

Choose the correct answer from the options given below:

(1) C and D only

(2) C and E only

(3) A and B only

(4) A and C only

**Ans: (4)**

149. Silencing of specific mRNA is possible via RNA because of –

- (1) Complementary tRNA
- (2) Non-complementary ssRNA
- (3) Complementary dsRNA
- (4) Inhibitory ssRNA

**Ans: (3)**

150. The complex II of mitochondrial electron transport chain is also known as

- (1) Cytochrome c oxidase
- (2) NADH dehydrogenase
- (3) Cytochrome  $bc_1$
- (4) Succinate dehydrogenase

**Ans: (4)**

151. While trying to find out the characteristic of a newly found animal, a researcher did the histology of adult animal and observed a cavity with presence of mesodermal tissue towards the body wall but no mesodermal tissue was observed towards the alimentary canal. What could be the possible coelome of that animal?

- (1) Schizocoelomate
- (2) Spongocoelomate
- (3) Acoelomate
- (4) Pseudocoelomate

**Ans: (4)**

152. Given below are two statements :

**Statement I :** In a floral formula  $\oplus$  stands for zygomorphic nature of the flower, and  $\underline{G}$  stands for inferior ovary.

**Statement II :** In a floral formula  $\oplus$  stands for actinomorphic nature of the flower and  $\underline{G}$  stands for superior ovary.

In the light of the above statements, choose the correct answer from the options given below:

- (1) Statement I is correct but Statement II is incorrect
- (2) Statement I is incorrect but Statement II is correct
- (3) Both Statement I and Statement II are correct
- (4) Both Statement I and Statement II are incorrect

**Ans: (2)**



153. Given below are two statements:

**Statement I :** In-ecosystem, there is unidirectional flow of energy of sun from producers to consumers.

**Statement II :** Ecosystems are Not exempted from 2<sup>nd</sup> law of thermodynamics.

In the light of the above statements, choose the most appropriate answer from the options given below :

- (1) Statement I is correct but statement II is incorrect
- (2) Statement I is incorrect but statement II is correct
- (3) Both statement I and statement II are correct
- (4) Both statement I and statement II are incorrect

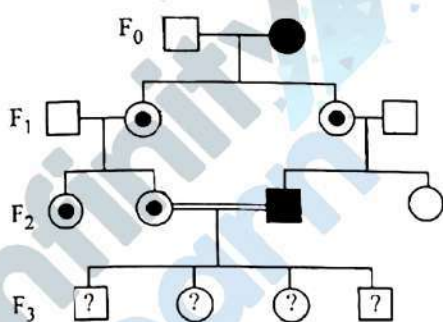
**Ans: (1)**

154. Which of the following is the unit of productivity of an Ecosystem?

- (1) KCal m<sup>-3</sup>
- (2) (KCal m<sup>-2</sup>)yr<sup>-1</sup>
- (3) gm<sup>-2</sup>
- (4) KCal m<sup>-2</sup>

**Ans: (2)**

155. With the help of given pedigree, find out the probability for the birth of a child having (n) disease and being a carrier (has the disease mutation in one allele of the gene) in F<sub>3</sub> generation.



- ☐ Unaffected male
- ☒ Affected male
- ☒ Carrier female
- ☐ Unaffected female
- ☒ Affected female

- (1)  $\frac{1}{8}$
- (2) Zero
- (3)  $\frac{1}{4}$
- (4)  $\frac{1}{2}$

**Ans: (3)**



156. In the seeds of cereals, the outer covering of endosperm separates the embryo by a proteinrich layer called :

- |                |                    |
|----------------|--------------------|
| (1) Integument | (2) Aleurone layer |
| (3) Coleoptile | (4) Coleorhiza     |

**Ans: (2)**

157. Match List I with List II :

List – I

- A. Chlorophyll a
- B. Chlorophyll b
- C. Xanthophylls
- D. Carotenoids

List – II

- I. Yellow-green
- II. Yellow
- III. Blue-green
- IV. Yellow to Yellow-orange

Choose the option with all correct matches.

- |                            |                            |
|----------------------------|----------------------------|
| (1) A-I, B-II, C-IV, D-III | (2) A-I, B-IV, C-III, D-II |
| (3) A-III, B-IV, C-II, D-I | (4) A-III, B-I, C-II, D-IV |

**Ans: (4)**

158. Who proposed that the genetic code for amino acids should be made up of three nucleotides?

- |                  |                    |
|------------------|--------------------|
| (1) Jacque Monod | (2) Franklin Stahl |
| (3) George Gamow | (4) Francis Crick  |

**Ans: (3)**

159. Histones are enriched with –

- |                             |                              |
|-----------------------------|------------------------------|
| (1) Phenylalanine & Leucine | (2) Phenylalanine & Arginine |
| (3) Lysine & Arginine       | (4) Leucine & Lysine         |

**Ans: (3)**

160. Which of the following enzyme(s) are NOT essential for gene cloning?

- A. Restriction enzymes
- B. DNA ligase
- C. DNA mutase
- D. DNA recombinase
- E. DNA polymerase

Choose the correct answer from the options given below :

- (1) D and E only                      (2) B and C only  
(3) C and D only                      (4) A and B only

**Ans: (3)**

161. A specialised membranous structure in a prokaryotic cell which helps in cell wall formation, DNA replication and respiration is :

- (1) Cristae (2) Endoplasmic Reticulum  
(3) Mesosome (4) Chromatophores

**Ans: (3)**

162. Which factor is important for termination of transcription?

- (1)  $\rho$  (rho)
- (2)  $\gamma$  (gamma)
- (3)  $\alpha$  (alpha)
- (4)  $\sigma$  (sigma)

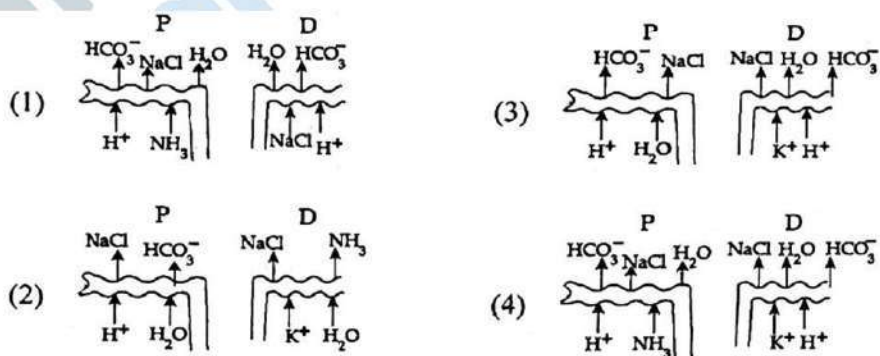
**Ans: (1)**

163. Which of the following statement is correct about location of the male frog copulatory pad?

- (1) Second digit of fore limb
- (2) First digit of the fore limb
- (3) First and Second digit of fore limb
- (4) First digit of hind limb

**Ans: (2)**

164. Which of the following diagrams is correct with regard to the proximal (P) and distal (D) tubule of the Nephron.



**Ans: (4)**

165. Identify the statement that is NOT correct.

- (1) Antigen binding site is located at C-terminal region of antibody molecules.
- (2) Constant region of heavy and light chains are located at C-terminus of antibody molecules
- (3) Each antibody has two light and two heavy chains.
- (4) The heavy and light chains are held together by disulfide bonds.

**Ans: (1)**

166. Match List I with List II :

**List-I**

- A. Scutellum
- B. Non-albuminous seed
- C. Epiblast
- D. Perisperm

**List-II**

- I. Persistent nucellus
- II. Cotyledon of Monocot seed
- III. Groundnut
- IV. Rudimentary cotyledon

Choose the option with all correct matches.

- (1) A-IV, B-III, C-I, D-II
- (2) A-II, B-IV, C-III, D-I
- (3) A-II, B-III, G-IV, D-I
- (4) A-IV, B-III, C-II, D-I

**Ans: (3)**

167. Find the statement that is NOT correct with regard to the structure of monocot stem.

- (1) Vascular bundles are conjoint and closed.
- (2) Phloem parenchyma is absent.
- (3) Hypodermis is parenchymatous.
- (4) Vascular bundles are scattered.

**Ans: (3)**

168. Twins are born to a family that lives next door to you. The twins are a boy and a girl. Which of the following must be true?

- (1) They were conceived through in vitro fertilization.
- (2) They have 75% identical genetic content.
- (3) They are monozygotic twins.
- (4) They are fraternal twins.

**Ans: (4)**



169. Sweet potato and potato represent a certain type of evolution. Select the correct combination of terms to explain the evolution.

- |                          |                         |
|--------------------------|-------------------------|
| (1) Homology, Convergent | (2) Analogy, divergent  |
| (3) Analogy, convergent  | (4) Homology, divergent |

**Ans: (3)**

170. Which one of the following phytohormones promotes nutrient mobilization which helps in the delay of leaf senescence in plants?

- |                 |                    |
|-----------------|--------------------|
| (1) Gibberellin | (2) Cytokinin      |
| (3) Ethylene    | (4) Absciscic acid |

**Ans: (2)**

171. Why can't insulin be given orally to diabetic patients?

- (1) Because of structural variation
- (2) Its bioavailability will be increased
- (3) Human body will elicit strong immune response
- (4) It will be digested in Gastro-Intestinal (GI) tract

**Ans: (4)**

172. Name the class of enzyme that usually catalyze the following reaction:



Where, G  $\rightarrow$  a group other than hydrogen

S  $\rightarrow$  a substrate

S<sup>#</sup>  $\rightarrow$  another substrate

- |                 |            |               |           |
|-----------------|------------|---------------|-----------|
| (1) Transferase | (2) Ligase | (3) Hydrolase | (4) Lyase |
|-----------------|------------|---------------|-----------|

**Ans: (1)**

173. Given below are two statements :

**Statement I :** The DNA fragments extracted from gel electrophoresis can be used in construction of recombinant DNA.

**Statement II :** Smaller size DNA fragments are observed near anode while larger fragments are found near the wells in an agarose gel.

In the light of the above statements, choose the most appropriate answer from the options given below :

- (1) Statement I is correct but statement II is incorrect
- (2) Statement I is incorrect but statement II is correct
- (3) Both statement 1 and statement II are correct
- (4) Both statement I and statement II are incorrect

**Ans: (3)**

174. The correct sequence of events in the life cycle of bryophytes is

- A. Fusion of antherozoid with egg.
- B. Attachment of gametophyte to substratum.
- C. Reduction division to produce haploid spores.
- D. Formation of sporophyte.
- E. Release of antherozoids into water.

Choose the correct answer from the options given below:

- (1) B, E, A, D, C
- (2) D, E, A, B, C
- (3) D, E, A, C, B
- (4) B, E, A, C, D

**Ans: (1)**

175. Genes *R* and *Y* follow independent assortment. If *RRYY* produce round yellow seeds and try produce wrinkled green seeds, what will be the phenotypic ratio of the *F*<sub>2</sub> generation?

- (1) Phenotypic ratio – 9 : 3 : 3 : 1
- (2) Phenotypic ratio - 9 : 7
- (3) Phenotypic ratio - 1 : 2 : 1
- (4) Phenotypic ratio - 3 : 1

**Ans: (1)**

176. Each of the following characteristics represent a Kingdom proposed by Whittaker. Arrange the following in increasing order of complexity of body organization.

- A. Multicellular heterotroph with cell wall made of chitin.
- B. Heterotroph with tissue/organ/organ system level of body organization.
- C. Prokaryotes with cell wall made of polysaccharides and amino acids.
- D. Eukaryotic autotrophs with tissue/organ level of body organization.



E. Eukaryotes with cellular body organization.

Choose the correct answer from the options given below :

(1) A, C, E, D, B

(2) C, E, A, B, D

(3) A, C, E, B, D

(4) C, E, A, D, B

**Ans: (4)**

177. Match List - I with List - II.

**List-I**

A. Centromere

B. Cilium

C. Cristae

D. Cell membrane

**List-II**

I. Mitochondrion

II. Cell division

III. Cell movement

IV. Phospholipid Bilayer

Choose the correct answer from the options given below :

(1) A-IV, B-II, C-III, D-I

(2) A-II, B-III, C-I, D-IV

(3) A-I, B-II, C-III, D-IV

(4) A-II, B-I, C-IV, D-III

**Ans: (2)**

178. Which one of the following equations represents the Verhulst-Pearl Logistic Growth of population?

(1)  $\frac{dN}{dt} = rN \left( \frac{N-K}{N} \right)$

(2)  $\frac{dN}{dt} = N \left( \frac{r-K}{K} \right)$

(3)  $\frac{dN}{dt} = r \left( \frac{K-N}{K} \right)$

(4)  $\frac{dN}{dt} = rN \left( \frac{K-N}{K} \right)$

**Ans: (4)**

179. Match List - I with List - II.

**List - I**

A. Emphysema

B. Angina Pectoris

C. Glomerulonephritis

D. Tetany

**List - II**

I. Rapid spasms in muscle due to low  $\text{Ca}^{++}$  in body fluid

II. Damaged alveolar walls and decreased respiratory surface

III. Acute chest pain when not enough oxygen is reaching to heart muscle

IV. Inflammation of glomeruli of kidney



Choose the correct answer from the options given below :

(1) A-II, B-IV, C-III, D-I

(2) A-II, B-III, C-IV, D-I

(3) A-III, B-I, C-IV, D-II

(4) A-III, B-I, C-II, D-IV

**Ans: (2)**

180. Cardiac activities of the heart are regulated by:

A. Nodal tissue

B. A special neural centre in the medulla oblongata

C. Adrenal medullary hormones

D. Adrenal cortical hormones

Choose the correct answer from the options given below :

(1) A, C and D Only

(2) A, B and D Only

(3) A, B and C Only

(4) A, B, C and D

**Ans: (3)**

### Topic wise Distribution

#### Grade – 11\_PHYSICS

S.No.	Chapter Name	No. of Questions
1	Basic Maths	0
2	Units and Measurements	2
3	Motion in a straight line	2
4	Motion in a Plane	0
5	Laws of Motion	3
6	Work, Energy and Power	3
7	System of Particles and Rotational Motion	1
8	Gravitation	2
9	Mechanical Properties of Solids	0
10	Mechanical Properties of Fluids	1
11	Thermal Properties of Matter	2
12	Thermodynamics	1
13	Kinetic Theory	1
14	Oscillations	2
15	Waves	1

**Grade – 12\_PHYSICS**

<b>S.No.</b>	<b>Chapter Name</b>	<b>No. of Questions</b>
1	Electric Charges & Fields	1
2	Electrostatic Potential & Capacitance	2
3	Current Electricity	3
4	Moving Charges and Magnetism	3
5	Magnetism and Matter	0
6	Electromagnetic Induction	1
7	Alternating Current	1
8	Electromagnetic Waves	2
9	Ray Optics and Optical Instruments	3
10	Wave Optics	2
11	Dual Nature of Radiation and Matter	2
12	Atoms	2
13	Nuclei	0
14	Semiconductor Electronics: Materials, Devices, and Simple Circuits	2
15	Experimental Physics	0



**Grade – 11\_CHEMISTRY**

<b>S.No.</b>	<b>Chapter Name</b>	<b>No. of Questions</b>
1	Some Basic Concepts of Chemistry	2
2	Structure of Atom	2
3	Classification of Elements and Periodicity in Properties	2
4	Chemical Bonding and Molecular Structure	3
5	Thermodynamics	1
6	Equilibrium	2
7	Redox Reactions	1
8	Organic Chemistry – Some Basic Principles and Techniques	3
9	Hydrocarbons	3
10	P-Block	2

**Grade – 12\_CHEMISTRY**

<b>S.No.</b>	<b>Chapter Name</b>	<b>No. of Questions</b>
1	Solutions	2
2	Electrochemistry	1
3	Chemical Kinetics	4
4	The d and f-Block Elements	2
5	Coordination Compounds	3
6	Haloalkanes and Haloarenes	1
7	Alcohols, Phenols and Ethers	0
8	Aldehydes, Ketones and Carboxylic Acids	2
9	Amines	4
10	Biomolecules	2
11	Practical Chemistry	3

**Grade – 11 BOTANY**

S.No.	Chapter Name	No. of Questions
1	Living World	0
2	Biological Classification	1
3	Plant Kingdom	5
4	Morphology of Flowering plants	2
5	Anatomy of Flowering Plants	1
6	Cell: The unit of life	5
7	Cell Cycle and Cell Division	2
8	Photosynthesis in Higher	2
9	Respiration in Plants	1
10	Plant Growth and Development	2

**Grade – 12 BOTANY**

S.No.	Chapter Name	No. of Questions
1	Sexual Reproduction in Flowering Plants	5
2	Principles of Inheritance and Variation	4
3	Molecular Basis of Inheritance	7
4	Microbes in Human Welfare	4
5	Organisms and Populations	3
6	Ecosystem	3
7	Biodiversity and Conservation	2



**Grade – 11\_ZOOLOGY**

<b>S.No.</b>	<b>Chapter Name</b>	<b>No. of Questions</b>
1	Animal Kingdom	4
2	Structural Organization in Animals	4
3	Biomolecules	4
4	Breathing and Exchange of Gases	1
5	Body Fluids and Circulation	1
6	Excretory Products and Their Elimination	1
7	Locomotion and Movement	0
8	Neural Control and Coordination	0
9	Chemical Coordination and Integration	3

**Grade – 12\_ZOOLOGY**

<b>S.No.</b>	<b>Chapter Name</b>	<b>No. of Questions</b>
1	Human Reproduction	6
2	Reproductive Health	1
3	Evolution	1
4	Human Health and Disease	5
5	Biotechnology: Principles and Processes	6
6	Biotechnology and Its Applications	4


**LIVE**

Infinity Learn by Sri Chaitanya Educational Institutions

**NEET 2025 ANSWER KEY**

**WITH PAPER SOLUTIONS**

**सबसे तेज़ और सबसे सटीक**



**4<sup>th</sup> May 2025**

**5:30 PM onwards**

\*\*\*\*\*