



Practice, Learn and Achieve
Your Goal with Prepp

RRB JE Exam

Previous Paper

Simplifying
Government Exams



SSC CHSL



IAS EXAM



RRB NTPC



NTSE



CDS



SSC CGL



CBSE UGC NET



IBPS PO



NDA



SBI PO



IBPS CLERK



AFCAT



SSC JE



CTET



CSIR UGC NET



CAPF



IBPS RRB

www.prepp.in

Railway Recruitment Board

Notations :

- Options shown in green color and with ✓ icon are correct.
- Options shown in red color and with ✗ icon are incorrect.

Question Paper Name:	Junior Engineer 26th Aug Shift 3 Actual
Subject Name:	Junior Engineer
Creation Date:	2015-08-18 12:48:18.0
Cut Off:	0
Duration:	120
Number of Questions:	150
Total Marks:	150.0

Junior Engineer

Group Number :	1
Group Id :	3
Group Maximum Duration :	0
Group Minimum Duration :	120
Revisit allowed for view? :	No
Revisit allowed for edit? :	No
Break time:	0
Group Marks:	150.0

Junior Engineer

Section Id :	3
Section Number :	1
Section type :	Online
Mandatory or Optional:	Mandatory
Number of Questions:	150
Number of Questions to be attempted:	150
Section Marks:	150.0

Sub-Section Number:	1
Sub-Section Id:	3
Question Shuffling Allowed :	Yes

Question Number : 1 Question Id : 301 Question Type : MCQ Option Shuffling : No
Correct : 1.0 Wrong : 0.33

Zeroth law of thermodynamics forms the basis of measurement of

Options :

- ✗ Pressure
- ✓ Temperature

3. ✖ Heat exchange

4. ✖ Work

Question Number : 2 Question Id : 302 Question Type : MCQ Option Shuffling : No

Correct : 1.0 Wrong : 0.33

Internal energy is defined by

Options :

1. ✖ Zeroth law of thermodynamics

2. ✔ First law of thermodynamics

3. ✖ Second law of thermodynamics

4. ✖ Law of entropy

Question Number : 3 Question Id : 303 Question Type : MCQ Option Shuffling : No

Correct : 1.0 Wrong : 0.33

The concept of overall heat transfer is used in the heat transfer in the case of

Options :

1. ✖ Conduction

2. ✖ Convection

3. ✖ Radiation

4. ✔ Combined mode of heat transfer of conduction and convection

Question Number : 4 Question Id : 304 Question Type : MCQ Option Shuffling : No

Correct : 1.0 Wrong : 0.33

The unit of thermal conductivity in S.I. unit is

Options :

1. ✔ W/mK

2. ✖ W²/mK

3. ✖ W/m²K

4. ✖ W/m

Question Number : 5 Question Id : 305 Question Type : MCQ Option Shuffling : No

Correct : 1.0 Wrong : 0.33

All radiations in a black body are

Options :

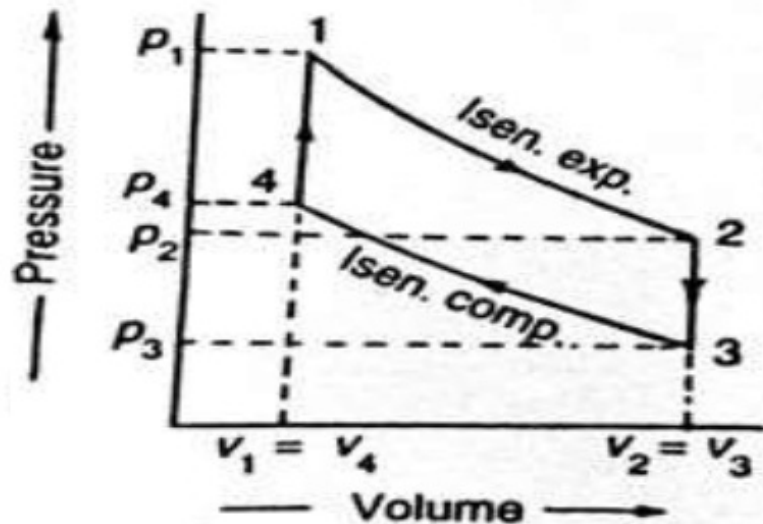
1. ✖ Reflected

2. ✖ Refracted

3. ✖ Transmitted

4. ✔ Absorbed

The given P-V diagram indicates following cycle



Options :

1. ✗ Carnot cycle
2. ✓ Otto cycle
3. ✗ Diesel cycle
4. ✗ Dual cycle

If the cut-off ratio is decreased, the efficiency of diesel cycle

Options :

1. ✓ Increases
2. ✗ Decreases
3. ✗ Remains constant
4. ✗ May increase or decrease

Size of shaper is specified by

Options :

1. ✗ Size of table
2. ✓ Length of stroke
3. ✗ Power of motor
4. ✗ Ratio of forward to return stroke

Correct : 1.0 Wrong : 0.33

Which of the following is an example of orthogonal cutting?

Options :

1. ✗ Shaping
2. ✓ Turning
3. ✗ Drilling
4. ✗ Milling

Question Number : 10 Question Id : 310 Question Type : MCQ Option Shuffling : No

Correct : 1.0 Wrong : 0.33

Grey cast iron is usually welded by

Options :

1. ✓ Gas welding
2. ✗ Resistance welding
3. ✗ Arc welding
4. ✗ Thermit welding

Question Number : 11 Question Id : 311 Question Type : MCQ Option Shuffling : No

Correct : 1.0 Wrong : 0.33

A grinding wheel of 150 mm diameter is rotating at 3000 rpm. The grinding speed is

Options :

1. ✓ 7.5π m/sec
2. ✗ 15π m/sec
3. ✗ 45π m/sec
4. ✗ 450π m/sec

Question Number : 12 Question Id : 312 Question Type : MCQ Option Shuffling : No

Correct : 1.0 Wrong : 0.33

In Die casting, machining allowance is

Options :

1. ✗ Small
2. ✗ Large
3. ✗ Very large
4. ✓ Not provided

Question Number : 13 Question Id : 313 Question Type : MCQ Option Shuffling : No

Correct : 1.0 Wrong : 0.33

The grinding operation is a

Options :

1. ✖ Shaping operation
2. ✖ Forming operation
3. ✔ Surface finishing operation
4. ✖ Dressing operation

Question Number : 14 Question Id : 314 Question Type : MCQ Option Shuffling : No

Correct : 1.0 Wrong : 0.33

The process in which leaving a tab without removing any material is

Options :

1. ✖ Notching
2. ✔ Lancing
3. ✖ Parting
4. ✖ Slitting

Question Number : 15 Question Id : 315 Question Type : MCQ Option Shuffling : No

Correct : 1.0 Wrong : 0.33

Steel rails are welded by

Options :

1. ✖ Gas welding
2. ✔ Thermit welding
3. ✖ Resistance welding
4. ✖ Argon arc welding

Question Number : 16 Question Id : 316 Question Type : MCQ Option Shuffling : No

Correct : 1.0 Wrong : 0.33

D.C. generator works on the principle of

Options :

1. ✔ Electromagnetic Induction
2. ✖ Ohm's Law
3. ✖ Lenz's Law
4. ✖ Kirchhoff's Law

Question Number : 17 Question Id : 317 Question Type : MCQ Option Shuffling : No

Correct : 1.0 Wrong : 0.33

Thermal relays are used in

Options :

1. ✓ motor starters
2. ✗ switchgear protection
3. ✗ transformer protection
4. ✗ generators

Question Number : 18 Question Id : 318 Question Type : MCQ Option Shuffling : No

Correct : 1.0 Wrong : 0.33

The most commonly used moderator in a Nuclear reactor is

Options :

1. ✗ graphite
2. ✗ oil
3. ✗ oxygen
4. ✓ heavy water

Question Number : 19 Question Id : 319 Question Type : MCQ Option Shuffling : No

Correct : 1.0 Wrong : 0.33

Over speed protection of a generator is done by

Options :

1. ✓ Governor
2. ✗ Differential protection
3. ✗ Over current relay
4. ✗ Alarm

Question Number : 20 Question Id : 320 Question Type : MCQ Option Shuffling : No

Correct : 1.0 Wrong : 0.33

The motor which does not have winding on it, is

Options :

1. ✗ Repulsion
2. ✗ Reluctance
3. ✓ Hysteresis
4. ✗ Universal

Question Number : 21 Question Id : 321 Question Type : MCQ Option Shuffling : No

Correct : 1.0 Wrong : 0.33

Which of the following is not fitted on transformer?

Options :

1. ✓ Commutator
2. ✗ Breather
3. ✗ Conservator
4. ✗ Buchholz Relay

Question Number : 22 Question Id : 322 Question Type : MCQ Option Shuffling : No

Correct : 1.0 Wrong : 0.33

Open circuit test in transformers is conducted to determine

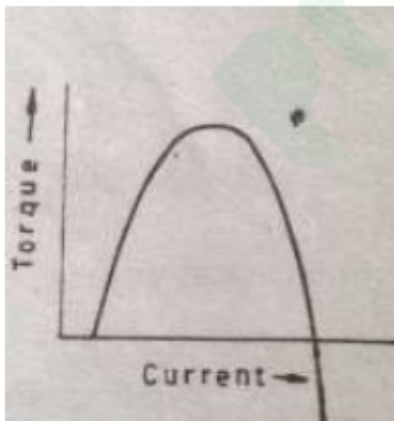
Options :

1. ✗ hysteresis losses
2. ✗ copper losses
3. ✓ core losses
4. ✗ eddy current losses

Question Number : 23 Question Id : 323 Question Type : MCQ Option Shuffling : No

Correct : 1.0 Wrong : 0.33

The given figure is the Torque-Current characteristics of



Options :

1. ✗ Cumulative Compound motor
2. ✗ Shunt motor
3. ✗ Series motor
4. ✓ Differential Compound motor

Question Number : 24 Question Id : 324 Question Type : MCQ Option Shuffling : No

Correct : 1.0 Wrong : 0.33

Which of the following is not a non-linear element?

Options :

1. ✖ Gas diode
2. ✔ Heater coil
3. ✖ Tunnel diode
4. ✖ Electric arc

Question Number : 25 Question Id : 325 Question Type : MCQ Option Shuffling : No

Correct : 1.0 Wrong : 0.33

Which of the following is known as metal rectifier?

Options :

1. ✖ Selenium disc rectifier
2. ✔ Copper oxide rectifier
3. ✖ Gas tube diode
4. ✖ Varactor diode

Question Number : 26 Question Id : 326 Question Type : MCQ Option Shuffling : No

Correct : 1.0 Wrong : 0.33

For full-wave rectified sine wave, form factor is

Options :

1. ✖ 1.41
2. ✔ 1.11
3. ✖ 1.5
4. ✖ 1.28

Question Number : 27 Question Id : 327 Question Type : MCQ Option Shuffling : No

Correct : 1.0 Wrong : 0.33

Electron pair bonding occurs when atoms

Options :

1. ✖ lack electrons
2. ✖ lack holes
3. ✔ share electrons
4. ✖ share holes

Question Number : 28 Question Id : 328 Question Type : MCQ Option Shuffling : No

Correct : 1.0 Wrong : 0.33

In a p type semiconductor, minority carriers are

Options :

1. ✖ holes
2. ✔ electrons
3. ✖ dopants
4. ✖ atoms

Question Number : 29 Question Id : 329 Question Type : MCQ Option Shuffling : No

Correct : 1.0 Wrong : 0.33

Which of the following is a pentavalent material?

Options :

1. ✖ carbon
2. ✖ boron
3. ✔ phosphorus
4. ✖ silicon

Question Number : 30 Question Id : 330 Question Type : MCQ Option Shuffling : No

Correct : 1.0 Wrong : 0.33

Another name for a unity gain amplifier is

Options :

1. ✖ difference amplifier
2. ✖ comparator
3. ✖ single ended
4. ✔ voltage follower

Question Number : 31 Question Id : 331 Question Type : MCQ Option Shuffling : No

Correct : 1.0 Wrong : 0.33

At room temperature, the current in intrinsic semiconductor is due to

Options :

1. ✖ holes
2. ✖ electrons
3. ✖ ions
4. ✔ holes and electrons both

Question Number : 32 Question Id : 332 Question Type : MCQ Option Shuffling : No

Correct : 1.0 Wrong : 0.33

$AB + AB' =$

Options :

1. ✖ B
2. ✔ A
3. ✖ 1
4. ✖ 0

Question Number : 33 Question Id : 333 Question Type : MCQ Option Shuffling : No

Correct : 1.0 Wrong : 0.33

Which of the following devices has one input and many outputs?

Options :

1. ✖ Multiplexer
2. ✔ Demultiplexer
3. ✖ flip-flop
4. ✖ Counter

Question Number : 34 Question Id : 334 Question Type : MCQ Option Shuffling : No

Correct : 1.0 Wrong : 0.33

The number of bits in ASCII is

Options :

1. ✔ 7
2. ✖ 8
3. ✖ 9
4. ✖ 10

Question Number : 35 Question Id : 335 Question Type : MCQ Option Shuffling : No

Correct : 1.0 Wrong : 0.33

Poise can also be expressed as

Options :

1. ✖ Dyne-cm/s²
2. ✖ Dyne-cm/s
3. ✖ Dyne-s/cm
4. ✔ Dyne-s/cm²

Question Number : 36 Question Id : 336 Question Type : MCQ Option Shuffling : No

Correct : 1.0 Wrong : 0.33

Number of phases in soil mass is

Options :

1. ✓ 3
2. ✗ 2
3. ✗ 1
4. ✗ 4

Question Number : 37 Question Id : 337 Question Type : MCQ Option Shuffling : No
Correct : 1.0 Wrong : 0.33

Bolts are most suitable to carry

Options :

1. ✗ Shear
2. ✗ Bending
3. ✓ Axial tension
4. ✗ Shear and bending

Question Number : 38 Question Id : 338 Question Type : MCQ Option Shuffling : No
Correct : 1.0 Wrong : 0.33

Spherical shape of droplets of mercury is due to

Options :

1. ✗ High density
2. ✓ High surface tension
3. ✗ High adhesion
4. ✗ Water

Question Number : 39 Question Id : 339 Question Type : MCQ Option Shuffling : No
Correct : 1.0 Wrong : 0.33

The method of orienting a plane table with two inaccessible points is known as

Options :

1. ✗ Intersection
2. ✗ Resection
3. ✗ Back sighting
4. ✓ Two-point problem

Question Number : 40 Question Id : 340 Question Type : MCQ Option Shuffling : No
Correct : 1.0 Wrong : 0.33

The most likely time (m) is 'mode' of the

Options :

1. ✗ Normal distribution

- 2. ✓ Beta distribution
- 3. ✗ Binomial distribution
- 4. ✗ Poisson distribution

Question Number : 41 Question Id : 341 Question Type : MCQ Option Shuffling : No
Correct : 1.0 Wrong : 0.33

Which of the following timbers is suitable for making sports goods?

Options :

- 1. ✓ Mulberry
- 2. ✗ Mahogany
- 3. ✗ Sal
- 4. ✗ Deodar

Question Number : 42 Question Id : 342 Question Type : MCQ Option Shuffling : No
Correct : 1.0 Wrong : 0.33

Cement concrete is a

Options :

- 1. ✗ Elastic material
- 2. ✓ Visco-elastic material
- 3. ✗ Non elastic material
- 4. ✗ Plastic material

Question Number : 43 Question Id : 343 Question Type : MCQ Option Shuffling : No
Correct : 1.0 Wrong : 0.33

Which of the following is used to measure the discharge?

Options :

- 1. ✗ Current meter
- 2. ✓ Venturimeter
- 3. ✗ Pitot tube
- 4. ✗ Hotwire anemometer

Question Number : 44 Question Id : 344 Question Type : MCQ Option Shuffling : No
Correct : 1.0 Wrong : 0.33

Direct method of contouring is

Options :

- 1. ✗ A quick method
- 2. ✗ Adopted for large surveys only

- 3. ✓ Most accurate method
- 4. ✗ Suitable for hilly terrains

Question Number : 45 Question Id : 345 Question Type : MCQ Option Shuffling : No
Correct : 1.0 Wrong : 0.33

Which of the following soils has more plasticity index?

Options :

- 1. ✗ Sand
- 2. ✗ Silt
- 3. ✓ Clay
- 4. ✗ Gravel

Question Number : 46 Question Id : 346 Question Type : MCQ Option Shuffling : No
Correct : 1.0 Wrong : 0.33

Seasoning of timber is required to

Options :

- 1. ✗ Soften the timber
- 2. ✗ Harden the timber
- 3. ✗ Straighten the timber
- 4. ✓ Remove sap from the timber

Question Number : 47 Question Id : 347 Question Type : MCQ Option Shuffling : No
Correct : 1.0 Wrong : 0.33

An instrument transformer is used to extend the range of

Options :

- 1. ✓ induction instrument
- 2. ✗ electrostatic instrument
- 3. ✗ moving coil instrument
- 4. ✗ PMMC instrument

Question Number : 48 Question Id : 348 Question Type : MCQ Option Shuffling : No
Correct : 1.0 Wrong : 0.33

Wattmeter cannot be designed on the principle of

Options :

- 1. ✗ electrostatic instrument
- 2. ✗ thermocouple instrument
- 3. ✓ moving iron instrument
- 4. ✗ electrodynamic ins

Question Number : 49 Question Id : 349 Question Type : MCQ Option Shuffling : No
Correct : 1.0 Wrong : 0.33

In an energy meter, braking torque is produced to

Options :

1. ✗ safe guard it against creep
2. ✗ brake the instrument
3. ✗ bring energy meter to stand still
4. ✓ maintain steady speed and equal to driving torque

Question Number : 50 Question Id : 350 Question Type : MCQ Option Shuffling : No
Correct : 1.0 Wrong : 0.33

Resistances can be measured with the help of

Options :

1. ✗ wattmeters
2. ✗ voltmeters
3. ✗ ammeters
4. ✓ ohmmeters and resistance bridges

Question Number : 51 Question Id : 351 Question Type : MCQ Option Shuffling : No
Correct : 1.0 Wrong : 0.33

Which of the following essential features is possessed by an indicating instrument?

Options :

1. ✗ Deflecting device
2. ✗ Controlling device
3. ✗ Damping device
4. ✓ Deflecting, controlling and damping device

Question Number : 52 Question Id : 352 Question Type : MCQ Option Shuffling : No
Correct : 1.0 Wrong : 0.33

Per capita water demand is

Options :

1. ✗ average amount of daily water required by one person
2. ✗ monthly average amount of daily water required by one person
3. ✓ annual average amount of daily water required by one person
4. ✗ weekly average amount of daily water required by one person

Question Number : 53 Question Id : 353 Question Type : MCQ Option Shuffling : No
Correct : 1.0 Wrong : 0.33

The permissible/desirable drinking water standard for total hardness is

Options :

1. ✖ 200 mg/l
2. ✔ 300 mg/l
3. ✖ 250 mg/l
4. ✖ 500 mg/l

Question Number : 54 Question Id : 354 Question Type : MCQ Option Shuffling : No

Correct : 1.0 Wrong : 0.33

In BOD₅ determination of sewage, the initial dissolved oxygen is measured to be 8.3 mg/l. However, after 5 day incubation at 20 °C temperature, the dissolved oxygen is found to be 2.3 mg/l. If the dilution factor is 1:60, the BOD₅ of the sewage would be

Options :

1. ✖ 360 mg/l
2. ✖ 260 mg/l
3. ✔ cannot be determined
4. ✖ 6.0 mg/l

Question Number : 55 Question Id : 355 Question Type : MCQ Option Shuffling : No

Correct : 1.0 Wrong : 0.33

The continuous exposure of high concentration of carbon monoxide may cause

Options :

1. ✖ damage of alveoli
2. ✖ kidney damage
3. ✖ failure of respiratory system
4. ✔ coma followed by death

Question Number : 56 Question Id : 356 Question Type : MCQ Option Shuffling : No

Correct : 1.0 Wrong : 0.33

The frequency range of audibility of a healthy person with perfect hearing is

Options :

1. ✖ 200 to 10000 Hz
2. ✖ 2000 to 5000 Hz
3. ✔ 20 to 20,000 Hz

4. ✖ 20 to 2000 Hz

Question Number : 57 Question Id : 357 Question Type : MCQ Option Shuffling : No

Correct : 1.0 Wrong : 0.33

The green house gases as per their increasing order of effectiveness are

Options :

1. ✔ CO₂, CH₄, N₂O and CFC
2. ✖ CH₄, CO₂, N₂O and CFC
3. ✖ N₂O, CH₄, CO₂ and CFC
4. ✖ CFC, CH₄, CO₂ and N₂O

Question Number : 58 Question Id : 358 Question Type : MCQ Option Shuffling : No

Correct : 1.0 Wrong : 0.33

Printer is a(an) _____

Options :

1. ✖ Input device
2. ✔ Output device
3. ✖ Storage device
4. ✖ Both input and output device

Question Number : 59 Question Id : 359 Question Type : MCQ Option Shuffling : No

Correct : 1.0 Wrong : 0.33

Which of the following is not true about EPROM?

Options :

1. ✖ Random access memory
2. ✖ Erasable programmable read only memory
3. ✖ Non-volatile memory
4. ✔ Sequential access memory

Question Number : 60 Question Id : 360 Question Type : MCQ Option Shuffling : No

Correct : 1.0 Wrong : 0.33

Which of the following components of CPU temporarily stores data for ALU operations?

Options :

1. ✖ Arithmetic and Logic Unit (ALU)
2. ✖ Control Unit (CU)
3. ✔ Registers

4. ✖ Random Access Memory (RAM)

Question Number : 61 Question Id : 361 Question Type : MCQ Option Shuffling : No
Correct : 1.0 Wrong : 0.33

BCD coding scheme uses _____ bits to code decimal digits.

Options :

- 1. ✔ 4
- 2. ✖ 8
- 3. ✖ 16
- 4. ✖ 32

Question Number : 62 Question Id : 362 Question Type : MCQ Option Shuffling : No
Correct : 1.0 Wrong : 0.33

The binary representation of 195.5 is _____

Options :

- 1. ✖ $(11000001.01)_2$
- 2. ✖ $(11000001.11)_2$
- 3. ✖ $(11000011.01)_2$
- 4. ✔ $(11000011.10)_2$

Question Number : 63 Question Id : 363 Question Type : MCQ Option Shuffling : No
Correct : 1.0 Wrong : 0.33

Considering X as a binary variable, the Boolean expression $X.1$ is equivalent to

Options :

- 1. ✔ X
- 2. ✖ 1
- 3. ✖ 0
- 4. ✖ X'

Question Number : 64 Question Id : 364 Question Type : MCQ Option Shuffling : No
Correct : 1.0 Wrong : 0.33

The 2's complement of the binary number $(00000000)_2$ is

Options :

- 1. ✖ $(11111111)_2$
- 2. ✔ $(00000000)_2$
- 3. ✖ $(10101010)_2$
- 4. ✖ $(01010101)_2$

Question Number : 65 Question Id : 365 Question Type : MCQ Option Shuffling : No

Correct : 1.0 Wrong : 0.33

A proprietary technology developed by Microsoft that allows embedding and linking to documents and other objects is

Options :

1. ✗ DOM
2. ✗ MODEM
3. ✓ OLE
4. ✗ OpenDoc

Question Number : 66 Question Id : 366 Question Type : MCQ Option Shuffling : No

Correct : 1.0 Wrong : 0.33

Class 'B' IP addresses use _____ bits for Network ID.

Options :

1. ✗ 8
2. ✓ 16
3. ✗ 24
4. ✗ 32

Question Number : 67 Question Id : 367 Question Type : MCQ Option Shuffling : No

Correct : 1.0 Wrong : 0.33

Which of the following is not a Web browser?

Options :

1. ✗ Netscape Navigator
2. ✗ NetSurf
3. ✓ XML
4. ✗ Opera

Question Number : 68 Question Id : 368 Question Type : MCQ Option Shuffling : No

Correct : 1.0 Wrong : 0.33

The diagonal scale is used to represent

Options :

1. ✓ three consecutive units
2. ✗ two consecutive units
3. ✗ diagonal of square
4. ✗ diagonal of rectangle

Correct : 1.0 Wrong : 0.33

If a line is parallel to H.P. and inclined to V.P., its true length will be seen in

Options :

1. ✗ Front view
2. ✓ Top view
3. ✗ Side view
4. ✗ Both front and top views

Question Number : 70 Question Id : 370 Question Type : MCQ Option Shuffling : No

Correct : 1.0 Wrong : 0.33

If both the front and top views of a plane are straight lines, it may be

Options :

1. ✓ perpendicular to both horizontal and vertical planes
2. ✗ parallel to horizontal plane and perpendicular to vertical plane
3. ✗ perpendicular to horizontal plane and parallel to vertical plane
4. ✗ parallel to both horizontal and vertical planes

Question Number : 71 Question Id : 371 Question Type : MCQ Option Shuffling : No

Correct : 1.0 Wrong : 0.33

For orthographic projections, BIS recommends the following projections.

Options :

1. ✗ Fourth-angle projection
2. ✗ Third-angle projection
3. ✓ First-angle projection
4. ✗ Second-angle projection

Question Number : 72 Question Id : 372 Question Type : MCQ Option Shuffling : No

Correct : 1.0 Wrong : 0.33

A square lamina is perpendicular to the H.P. and inclined to V.P. Its

Options :

1. ✓ V.T. will be perpendicular to the reference line
2. ✗ H.T. will be parallel to the reference line
3. ✗ V.T. will be parallel to the reference line
4. ✗ V.T. will be inclined to the reference line

Question Number : 73 Question

Correct : 1.0 Wrong : 0.33

Latest Sarkari Jobs, Govt Exam Results,
Vacancies and updates on one click

[Know More](#)

A truck of mass 1000 kg moving at a speed of 20 m/s is braked suddenly with a braking force of 5000 N. The distance travelled by the truck before stopping is

Options :

1. ✗ 20 m
2. ✗ 30 m
3. ✓ 40 m
4. ✗ 80 m

Question Number : 74 Question Id : 374 Question Type : MCQ Option Shuffling : No

Correct : 1.0 Wrong : 0.33

A cubical box (each side 10 cm) of weight 19.6 N is placed on a table. The pressure exerted by the box on the table is

Options :

1. ✗ 19.6 N/m^2
2. ✓ $1.96 \times 10^3 \text{ N/m}^2$
3. ✗ 1.96 N/m^2
4. ✗ $0.98 \times 10^3 \text{ N/m}^2$

Question Number : 75 Question Id : 375 Question Type : MCQ Option Shuffling : No

Correct : 1.0 Wrong : 0.33

Rohan does 150 J of work in 5 s. The power delivered by him is

Options :

1. ✓ 30 W
2. ✗ 15 W
3. ✗ 150 W
4. ✗ 750 W

Question Number : 76 Question Id : 376 Question Type : MCQ Option Shuffling : No

Correct : 1.0 Wrong : 0.33

For a sound wave, the amplitude is

Options :

1. ✗ the distance between two consecutive crests
2. ✗ the distance between two consecutive troughs
3. ✗ the height difference between a crest and a trough
4. ✓ one-half the height difference between a crest and a trough.

Question Number : 77 Question Id : 377 Question Type : MCQ Option Shuffling : No

Correct : 1.0 Wrong : 0.33

An object and a screen are separated by 25 cm. When a convex lens is placed between them at a distance of 5 cm from the object, a sharp image is formed on the screen. The focal length of the lens is

Options :

1. ✖ 20 cm
2. ✖ 6.67 cm
3. ✔ 4.0 cm
4. ✖ 2.0 cm.

Question Number : 78 Question Id : 378 Question Type : MCQ Option Shuffling : No

Correct : 1.0 Wrong : 0.33

Two conducting wires A (resistance R_A) and B (resistance R_B) are made of same material and have the same length. If the diameter of wire B is twice that of wire A, the ratio R_A / R_B is

Options :

1. ✔ 4
2. ✖ $1/4$
3. ✖ $1/2$
4. ✖ 1.

Question Number : 79 Question Id : 379 Question Type : MCQ Option Shuffling : No

Correct : 1.0 Wrong : 0.33

For its complete combustion, one mole of an alkane required 3.5 mole of oxygen gas at the same temperature and pressure. What is the name of alkane?

Options :

1. ✖ Methane
2. ✔ Ethane
3. ✖ Propane
4. ✖ Butane

Question Number : 80 Question Id : 380 Question Type : MCQ Option Shuffling : No

Correct : 1.0 Wrong : 0.33

Which one of the following is a molecule of an element?

Options :

1. ✔ Cl_2

2. ✖ H_2S

3. ✖ NaCl

4. ✖ CO_2

Question Number : 81 Question Id : 381 Question Type : MCQ Option Shuffling : No

Correct : 1.0 Wrong : 0.33

Rancidity of oils and fats can be controlled by controlling the process of

Options :

1. ✖ Decomposition

2. ✖ Neutralization

3. ✖ Reduction

4. ✔ Oxidation

Question Number : 82 Question Id : 382 Question Type : MCQ Option Shuffling : No

Correct : 1.0 Wrong : 0.33

An element X contains only one electron in its outermost shell. Which of the following statements are correct about X ?

i) It forms an acidic oxide.

ii) It forms a basic oxide.

iii) It is a good conductor of electricity.

iv) It has a dull and non lustrous surface

Options :

1. ✖ (i) & (iii)

2. ✔ (ii) & (iii)

3. ✖ (i) & (iv)

4. ✖ (iii) & (iv)

Question Number : 83 Question Id : 383 Question Type : MCQ Option Shuffling : No

Correct : 1.0 Wrong : 0.33

Which one of the following can act as an olfactory indicator?

Options :

1. ✖ Phenolphthalein

- 2. ✖ Methyl orange
- 3. ✔ Vanilla essence
- 4. ✖ Litmus solution

Question Number : 84 Question Id : 384 Question Type : MCQ Option Shuffling : No

Correct : 1.0 Wrong : 0.33

Which one of the following elements is the most metallic in nature?

Options :

- 1. ✔ Na
- 2. ✖ Al
- 3. ✖ Li
- 4. ✖ B

Question Number : 85 Question Id : 385 Question Type : MCQ Option Shuffling : No

Correct : 1.0 Wrong : 0.33

Scientific names of living beings consist of

Options :

- 1. ✖ one word
- 2. ✔ two words
- 3. ✖ four words
- 4. ✖ more than four words

Question Number : 86 Question Id : 386 Question Type : MCQ Option Shuffling : No

Correct : 1.0 Wrong : 0.33

Human heart is made of cardiac muscle fibres because these are

Options :

- 1. ✖ striated and involuntary
- 2. ✔ involuntary and without fatigue
- 3. ✖ voluntary and do not stop contracting

4. ✖ voluntary and fibres are connected

Question Number : 87 Question Id : 387 Question Type : MCQ Option Shuffling : No

Correct : 1.0 Wrong : 0.33

Leaves of cacti are modified into spines to reduce transpiration. This is an adaptation to which feature of their habitat?

Options :

1. ✔ Scarcity of water

2. ✖ Lack of rainfall

3. ✖ Hot daytime

4. ✖ Cool nights

Question Number : 88 Question Id : 388 Question Type : MCQ Option Shuffling : No

Correct : 1.0 Wrong : 0.33

Which organ of the digestive system gets affected by the disease Jaundice/Hepatitis?

Options :

1. ✔ Liver

2. ✖ Pancreas

3. ✖ Stomach

4. ✖ Kidney

Question Number : 89 Question Id : 389 Question Type : MCQ Option Shuffling : No

Correct : 1.0 Wrong : 0.33

Which out of the following is **not** a Green House Gas?

Options :

1. ✖ Carbon Dioxide

2. ✔ Nitrogen

3. ✖ Sulphur Dioxide

4. ✖ Nitrous Oxide

Question Number : 90 Question Id : 390 Question Type : MCQ Option Shuffling : No

Correct : 1.0 Wrong : 0.33

In which one of the following is DNA present?

Options :

1. ✓ Genes
2. ✗ Ribosomes
3. ✗ Vacuoles
4. ✗ Golgi

Question Number : 91 Question Id : 391 Question Type : MCQ Option Shuffling : No

Correct : 1.0 Wrong : 0.33

The HCF of two numbers is 15 and their LCM is 270. If one number is 45, the other number is

Options :

1. ✗ 18
2. ✓ 90
3. ✗ 81
4. ✗ 675

Question Number : 92 Question Id : 392 Question Type : MCQ Option Shuffling : No

Correct : 1.0 Wrong : 0.33

The largest number which divides 247 and 319, leaving remainders 7 and 4 respectively is

Options :

1. ✓ 15
2. ✗ 30
3. ✗ 45
4. ✗ 56

Question Number : 93 Question Id : 393 Question Type : MCQ Option Shuffling : No

Correct : 1.0 Wrong : 0.33

If $a : b = 5 : 6$ and $b : c = 3 : 4$, then $c : a$ is

Options :

1. ✖ 4 : 5

2. ✖ 5 : 4

3. ✔ 8 : 5

4. ✖ 5 : 8

Question Number : 94 Question Id : 394 Question Type : MCQ Option Shuffling : No

Correct : 1.0 Wrong : 0.33

If 8, 12, 14, x are in proportion, then x is equal to

Options :

1. ✖ 18

2. ✖ 20

3. ✔ 21

4. ✖ 28

Question Number : 95 Question Id : 395 Question Type : MCQ Option Shuffling : No

Correct : 1.0 Wrong : 0.33

Successive discounts of 40% and 20% are equivalent to a single discount of

Options :

1. ✖ 60%

2. ✖ 55%

3. ✖ 54%

4. ✔ 52%

Question Number : 96 Question Id : 396 Question Type : MCQ Option Shuffling : No

Correct : 1.0 Wrong : 0.33

The simple interest on rupees 800 for $\frac{3}{2}$ years at 5% per annum is

Options :

1. ✔ ₹100

2. ✖ ₹ 125

3. ✖ ₹ 150

4. ✖ ₹ 200

Question Number : 97 Question Id : 397 Question Type : MCQ Option Shuffling : No
Correct : 1.0 Wrong : 0.33

The compound interest on rupees 12000 for 1 year at 10% per annum compounded half yearly is

Options :

1. ✖ ₹ 1200

2. ✔ ₹ 1230

3. ✖ ₹ 2520

4. ✖ ₹ 2680

Question Number : 98 Question Id : 398 Question Type : MCQ Option Shuffling : No
Correct : 1.0 Wrong : 0.33

If CP of 25 articles is equal to SP of 20 articles, then in the whole transaction there is a profit of

Options :

1. ✖ 10%

2. ✖ 20%

3. ✔ 25%

4. ✖ 30%

Question Number : 99 Question Id : 399 Question Type : MCQ Option Shuffling : No
Correct : 1.0 Wrong : 0.33

To gain 25% after allowing a discount of 10%, the shopkeeper should mark the price of the article which cost him ₹ 720 as

Options :

1. ✖ 10%

2. ✖ 20%

3. ✖ 25%

30%

4. ✓

Question Number : 100 Question Id : 400 Question Type : MCQ Option Shuffling : No

Correct : 1.0 Wrong : 0.33

A shopkeeper mixes 26 kg of rice which costs him ₹ 100 per kg with 30 kg of rice which costs him ₹ 180 per kg. He sells the mixed rice at ₹ 150 per kg.. The percentage gain is

Options :

1. ✗ 10%

2. ✗ $\frac{100}{21}\%$

3. ✗ 7 %

4. ✓ 5 %

Question Number : 101 Question Id : 401 Question Type : MCQ Option Shuffling : No

Correct : 1.0 Wrong : 0.33

In two vessels A and B, the spirit and water are in the ratio of 5 : 2 and 7 : 6 respectively. The ratio in which these are mixed to obtain new mixture which contains spirit and water in the ratio 3 : 2 is

Options :

1. ✗ 5 : 12

2. ✗ 3 : 2

3. ✓ 7 : 13

4. ✗ 35 : 12

Question Number : 102 Question Id : 402 Question Type : MCQ Option Shuffling : No

Correct : 1.0 Wrong : 0.33

The speed of a boat in still water is 15 km/hr. The speed of the stream is 3 km/hr. The time taken to go 12 km downstream in minutes is

Options :

1. ✓ 40

45

2. ✖

50

3. ✖

55

4. ✖

Question Number : 103 Question Id : 403 Question Type : MCQ Option Shuffling : No

Correct : 1.0 Wrong : 0.33

A train 200 m long is moving at 40 km/hr. The time in seconds, it will take to pass another train 150 long which is moving at 50 km/h in the opposite direction from the moment they meet is

Options :

8

1. ✖

12

2. ✖

14

3. ✔

117

4. ✖

Question Number : 104 Question Id : 404 Question Type : MCQ Option Shuffling : No

Correct : 1.0 Wrong : 0.33

A can do a piece of work in 15 days and B can do the same work in 10 days. If they work together, number of days required to complete the same work is

Options :

5

1. ✖

6

2. ✔

7

3. ✖

8

4. ✖

Question Number : 105 Question Id : 405 Question Type : MCQ Option Shuffling : No

Correct : 1.0 Wrong : 0.33

P and Q can do a piece of work in 10 days, Q and R in 12 days and R and P in 15 days. In how many days P alone can do the same work?

Options :

24

1. ✔

2. ✖ 40
3. ✖ 6
4. ✖ $\frac{40}{3}$

Question Number : 106 Question Id : 406 Question Type : MCQ Option Shuffling : No
Correct : 1.0 Wrong : 0.33

The average of first six even whole numbers is

Options :

1. ✔ 5
2. ✖ 6
3. ✖ 7
4. ✖ 8

Question Number : 107 Question Id : 407 Question Type : MCQ Option Shuffling : No
Correct : 1.0 Wrong : 0.33

The average marks of students of section A and B are respectively 60 and 70.
The number of students in section A is 47 and in section B is 53. The average marks of both sections taken together are

Options :

1. ✖ 65.5
2. ✔ 65.3
3. ✖ 65.6
4. ✖ 65.8

Question Number : 108 Question Id : 408 Question Type : MCQ Option Shuffling : No
Correct : 1.0 Wrong : 0.33

The first term of an AP is -5 and third term is 17. Its seventh term is

Options :

1. ✖ 31
2. ✖ 41

3. ✓ 61

4. ✗ 71

Question Number : 109 Question Id : 409 Question Type : MCQ Option Shuffling : No
Correct : 1.0 Wrong : 0.33

The 12th term of the G.P 1, -3, 9, -27, ..., is

Options :

1. ✗ 3^{12}

2. ✗ -3^{12}

3. ✗ 3^{11}

4. ✓ -3^{11}

Question Number : 110 Question Id : 410 Question Type : MCQ Option Shuffling : No
Correct : 1.0 Wrong : 0.33

A ladder just reaches the top of a wall. The foot of the ladder is 8m away from the foot of the wall. The ladder makes an angle of 60° with the ground. The length of the ladder is

Options :

1. ✗ 4 m

2. ✓ 16 m

3. ✗ $\frac{16\sqrt{3}}{3}$ m

4. ✗ $16\sqrt{3}$ m

Question Number : 111 Question Id : 411 Question Type : MCQ Option Shuffling : No
Correct : 1.0 Wrong : 0.33

From a point on the bridge across a river the angle of depressions of the bank on the opposite side of the river are 60° and 45° respectively. If the bridge is at a height of 3m from the bank, the width of the river is

Options :

1. ✗ $2(\sqrt{3} + 1)$ m

2. ✖ $3(\sqrt{3} + 1) \text{ m}$

3. ✖ $3 - \sqrt{3} \text{ m}$

4. ✔ $3 + \sqrt{3} \text{ m}$

Question Number : 112 Question Id : 412 Question Type : MCQ Option Shuffling : No

Correct : 1.0 Wrong : 0.33

If $(x - 1)$ is a factor of $3x^3 - 2ax^2 - 3x + 6$, then a is equal to

Options :

1. ✔ 3

2. ✖ -3

3. ✖ $+6$

4. ✖ -6

Question Number : 113 Question Id : 413 Question Type : MCQ Option Shuffling : No

Correct : 1.0 Wrong : 0.33

One of the factors of $(81x^2 - 1) + (1 + 9x)^2$ is

Options :

1. ✔ $18x$

2. ✖ $9 + x$

3. ✖ $9 - x$

4. ✖ $9x - 1$

Question Number : 114 Question Id : 414 Question Type : MCQ Option Shuffling : No

Correct : 1.0 Wrong : 0.33

All values of k for which $x^2 - kx + 9 = 0$ has real roots is

Options :

1. ✖ $-6 \leq k \leq 6$

2. ✔ $6 \leq k \leq -6$

3. ✖ $k \geq 6$

4. ✖ $k \leq -6$

Question Number : 115 Question Id : 415 Question Type : MCQ Option Shuffling : No

Correct : 1.0 Wrong : 0.33

The sum and product of the roots of the equation $x^2 - 8x + 4 = 0$ are respectively

Options :

1. ✖ $-8, 4$

2. ✖ $8, -4$

3. ✔ $8, 4$

4. ✖ $-8, -4$

Question Number : 116 Question Id : 416 Question Type : MCQ Option Shuffling : No

Correct : 1.0 Wrong : 0.33

The football player has to leave the field if the referee shows him

Options :

1. ✖ Green card once

2. ✖ Yellow card once

3. ✖ Green card twice

4. ✔ Yellow card twice or Red card once

Question Number : 117 Question Id : 417 Question Type : MCQ Option Shuffling : No

Correct : 1.0 Wrong : 0.33

The first Indian to win an Olympic gold medal in an individual capacity was

Options :

1. ✔ Abhinav Bindra

2. ✖ Milkha Singh

3. ✖ PT Usha

4. ✖ Vijender Kumar

Question Number : 118 Question Id : 418 Question Type : MCQ Option Shuffling : No

Correct : 1.0 Wrong : 0.33

When you touch a hot plate and immediately withdraw your hand, the action is triggered by your

Options :

1. ✖ Brain
2. ✔ Spinal Cord
3. ✖ Upper arm muscles
4. ✖ bones of the hand

Question Number : 119 Question Id : 419 Question Type : MCQ Option Shuffling : No

Correct : 1.0 Wrong : 0.33

In a green house, paraffin is ignited to enhance photosynthesis in the plants as it provides

Options :

1. ✖ Water
2. ✔ Carbon-di-oxide
3. ✖ Oxygen
4. ✖ More light

Question Number : 120 Question Id : 420 Question Type : MCQ Option Shuffling : No

Correct : 1.0 Wrong : 0.33

Which of the following is not an insect?

Options :

1. ✔ Spider
2. ✖ Butterfly
3. ✖ Beetle
4. ✖ Termite

Question Number : 121 Question Id : 421 Question Type : MCQ Option Shuffling : No

Correct : 1.0 Wrong : 0.33

You can make soap at home from vegetable oil and

Options :

1. ✖ Caustic Potash
2. ✖ Ammonium Hydroxide
3. ✔ Caustic Soda
4. ✖ Sodium Chloride

Question Number : 122 Question Id : 422 Question Type : MCQ Option Shuffling : No

Correct : 1.0 Wrong : 0.33

Students were asked to present a “balanced equation” regarding Photosynthesis. Which is the correct equation?

Options :

1. ✖ $6\text{CO}_2 + \text{H}_2\text{O} \rightarrow \text{C}_6\text{H}_{12}\text{O}_6 + \text{O}_2$
2. ✔ $6\text{CO}_2 + 6\text{H}_2\text{O} \rightarrow \text{C}_6\text{H}_{12}\text{O}_6 + 6\text{O}_2$
3. ✖ $\text{CO}_2 + 6\text{H}_2\text{O} \rightarrow \text{C}_6\text{H}_{12}\text{O}_6 + \text{O}_2$
4. ✖ $\text{CO}_2 + \text{H}_2\text{O} \rightarrow \text{C}_6\text{H}_{12}\text{O}_6 + \text{O}_2$

Question Number : 123 Question Id : 423 Question Type : MCQ Option Shuffling : No

Correct : 1.0 Wrong : 0.33

Which out of the F, Br, Ca and Mg which are important elements because their salts are useful to humans may be grouped as halogens?

Options :

1. ✔ F and Br
2. ✖ F and Ca
3. ✖ Br and Mg
4. ✖ Ca and Br

Question Number : 124 Question Id : 424 Question Type : MCQ Option Shuffling : No

Correct : 1.0 Wrong : 0.33

A maximum of how many partners can a trading business firm have according to Indian Partnership Act?

Options :

1. ✓ 20
2. ✗ 15
3. ✗ 10
4. ✗ 5

Question Number : 125 Question Id : 425 Question Type : MCQ Option Shuffling : No
Correct : 1.0 Wrong : 0.33

We are able to walk on the ground because of

Options :

1. ✓ Friction
2. ✗ Gravitation
3. ✗ Rotation
4. ✗ Combination of gravity and Rotation

Question Number : 126 Question Id : 426 Question Type : MCQ Option Shuffling : No
Correct : 1.0 Wrong : 0.33

Scissors belong to the category of simple machines called levers. It is a first class lever because

Options :

1. ✓ Fulcrum (fixed point) is between load and effort
2. ✗ Load is between Fulcrum and effort
3. ✗ Effort is between fulcrum and load
4. ✗ It does not have a fulcrum

Question Number : 127 Question Id : 427 Question Type : MCQ Option Shuffling : No
Correct : 1.0 Wrong : 0.33

As I was folding my blanket of synthetic fibers, there were sparks due to generation of

Options :

1. ✓ Frictional electricity
2. ✗ Current electricity
3. ✗ Flow of elec

Flow of potential

4. ✖

Question Number : 128 Question Id : 428 Question Type : MCQ Option Shuffling : No

Correct : 1.0 Wrong : 0.33

The latest country to give up its national currency and adopt “euro” as its currency is

Options :

1. ✔ Latvia
2. ✖ Lebanon
3. ✖ Brazil
4. ✖ Italy

Question Number : 129 Question Id : 429 Question Type : MCQ Option Shuffling : No

Correct : 1.0 Wrong : 0.33

Who presides over the present Lok Sabha when parliament session is on?

Options :

1. ✖ President, Pranab Mukherji
2. ✖ Vice President, Hamid Ansari
3. ✖ Prime Minister, Narendra Modi
4. ✔ Speaker, Sumitra Mahajan

Question Number : 130 Question Id : 430 Question Type : MCQ Option Shuffling : No

Correct : 1.0 Wrong : 0.33

BCMI project connects Bangladesh, China and India with

Options :

1. ✖ Manila
2. ✔ Myanmar
3. ✖ Malaysia
4. ✖ Morocco

Question Number : 131 Question Id : 431 Question Type : MCQ Option Shuffling : No

Correct : 1.0 Wrong : 0.33

One long river of our country which flows through the North-East is

Options :

1. ✖ Ganges
2. ✔ Brahmaputra
3. ✖ Narmada
4. ✖ Kaveri

Question Number : 132 Question Id : 432 Question Type : MCQ Option Shuffling : No
Correct : 1.0 Wrong : 0.33

The making of 'maps' is called

Options :

1. ✖ Calligraphy
2. ✖ Numismatics
3. ✔ Cartography
4. ✖ Philately

Question Number : 133 Question Id : 433 Question Type : MCQ Option Shuffling : No
Correct : 1.0 Wrong : 0.33

What is global warming and climate change due to?

Options :

1. ✔ Accumulation of Carbon dioxide in the atmosphere
2. ✖ Ozone hole
3. ✖ Photo chemical smog
4. ✖ UV rays of sunlight falling on earth

Question Number : 134 Question Id : 434 Question Type : MCQ Option Shuffling : No
Correct : 1.0 Wrong : 0.33

The Indian constitution was written on 26/11/1949 and came into force on

Options :

1. ✖ Same day
2. ✔ 26.01.1950
3. ✖ 15.08.1950
4. ✖ 26.01.1952

Question Number : 135 Question Id : 435 Question Type : MCQ Option Shuffling : No

Correct : 1.0 Wrong : 0.33

A few children between ages 8 and 14 were rescued from a factory where they worked under inhuman conditions. Which fundamental right of the constitution made this possible?

Options :

1. ✖ Right to Education
2. ✖ Right to Freedom of Speech
3. ✔ Right against exploitation
4. ✖ Right to Freedom of Religion

Question Number : 136 Question Id : 436 Question Type : MCQ Option Shuffling : No

Correct : 1.0 Wrong : 0.33

The relationship between quantity, revenue and price is

Options :

1. ✔ Quantity times Price = Revenue
2. ✖ Revenue times Price = Quantity
3. ✖ Quantity times Revenue = Price
4. ✖ Price times Quantity = Current price

Question Number : 137 Question Id : 437 Question Type : MCQ Option Shuffling : No

Correct : 1.0 Wrong : 0.33

Pablo Picasso's creation 'Guernica' was based on consequences of

Options :

1. ✔ Spanish civil war
2. ✖ Sudanese civil war
3. ✖ Second world war
4. ✖ American war of independence

Question Number : 138 Question Id : 438 Question Type : MCQ Option Shuffling : No

Correct : 1.0 Wrong : 0.33

Three national leaders were together called Lal Bal Pal. Which name in the options is wrong?

Options :

1. ✖ Bal Gangadhar Tilak
2. ✖ Bipin Chandra Pal
3. ✖ Lala Lajpat Rai
4. ✔ Lal Bahadur Shastri

Question Number : 139 Question Id : 439 Question Type : MCQ Option Shuffling : No

Correct : 1.0 Wrong : 0.33

Who was the last Governor General in the two century rule of the British in India?

Options :

1. ✖ Lord Clive
2. ✖ Sir Warren Hastings
3. ✔ Lord Mountbatten
4. ✖ Lord Cornwallis

Question Number : 140 Question Id : 440 Question Type : MCQ Option Shuffling : No

Correct : 1.0 Wrong : 0.33

Which of the following statements is not true?

Options :

1. ✖ Amartya Sen is the only economist from India/of Indian origin to have won the Nobel Prize for Economics
2. ✔ Amartya Sen is also credited with developing the input output method with C.V. Raman
3. ✖ Amartya Sen received the Nobel Prize in 1998 for his contribution to welfare economics
4. ✖ Amartya Sen is also known as a champion of nationalism, secularism

Question Number : 141 Question Id : 441 Question Type : MCQ Option Shuffling : No

Correct : 1.0 Wrong : 0.33

Pointing to a photograph Rohit said, "His father's brother is my brother's father." How is Rohit related to the man in the photograph?

Options :

1. ✔ cousin

uncle

2. ✖

brother-in-law

3. ✖

brother

4. ✖

Question Number : 142 Question Id : 442 Question Type : MCQ Option Shuffling : No

Correct : 1.0 Wrong : 0.33

The first two numbers on the left of the sign '::' are related in a certain way. The same relationship holds for the second pair of numbers on the right side of the sign '::' of which one is missing. Find the missing one from the alternatives.

16 : 27 :: 36 : ?

Options :

1. ✖ 140

2. ✔ 125

3. ✖ 112

4. ✖ 84

Question Number : 143 Question Id : 443 Question Type : MCQ Option Shuffling : No

Correct : 1.0 Wrong : 0.33

The two words on the left side of the sign '::' are related in a certain way. The same relationship holds for the second pair of words on the right side of the sign '::' of which one is missing. Find the missing one from the alternatives.

Microphone : Loud :: Microscope : ?

Options :

1. ✖ Bacteria

2. ✖ Reflect

3. ✖ Examine

4. ✔ Magnify

Question Number : 144 Question Id : 444 Question Type : MCQ Option Shuffling : No

Correct : 1.0 Wrong : 0.33

Six friends A, B, C, D, E and F are sitting in a row. A is not sitting next to C or D. There are two persons between D and F. D is next to B, who is in one of the extremes. Who is sitting in the other extreme?

Options :

1. ✖ A

2. ✓ C
3. ✗ E
4. ✗ F

Question Number : 145 Question Id : 445 Question Type : MCQ Option Shuffling : No

Correct : 1.0 Wrong : 0.33

Arrange the following words in a meaningful logical sequence and choose the appropriate number sequence from the alternatives.

1. Medicine 2. Injury 3. Doctor 4. Accident 5. Cure 6. Hospital

Options :

1. ✓ 4, 2, 3, 6, 1, 5
2. ✗ 5, 6, 3, 1, 2, 4
3. ✗ 4, 2, 6, 1, 3, 5
4. ✗ 4, 2, 6, 3, 1, 5

For the above question, User had specified 'ignore' during keys upload.

Question Number : 146 Question Id : 446 Question Type : MCQ Option Shuffling : No

Correct : 1.0 Wrong : 0.33

The numbers in each group are related in a certain way. Choose the correct number from among the alternatives that will replace the question mark.

(3 [34] 5) (4 [65] 7) (6 [?] 9)

Options :

1. ✗ 85
2. ✗ 107
3. ✓ 117
4. ✗ 128

Question Number : 147 Question Id : 447 Question Type : MCQ Option Shuffling : No

Correct : 1.0 Wrong : 0.33

In a certain language, '296' means 'adults are educated'; '7825' means 'rich persons are nice'; and '9257' means 'educated persons are rich'. Which digit means 'educated' in that language?

Options :

1. ✓ 9
2. ✗ 6
3. ✗ 8

4. ✖ 7

Question Number : 148 Question Id : 448 Question Type : MCQ Option Shuffling : No

Correct : 1.0 Wrong : 0.33

If 'METHOD' is coded as 'LFRJLG', then 'GROUND' will be coded as:

Options :

1. ✖ FSMWLG

2. ✔ FSMWKG

3. ✖ ESMWKG

4. ✖ FSNWKG

Question Number : 149 Question Id : 449 Question Type : MCQ Option Shuffling : No

Correct : 1.0 Wrong : 0.33

Harsh's school bus picks him up from his home. Then it takes one left turn and two right turns to reach his school. If the bus is facing North-West when it reaches the school, which direction was the bus facing at Harsh's home?

Options :

1. ✔ South-West

2. ✖ South-East

3. ✖ North-East

4. ✖ South

Question Number : 150 Question Id : 450 Question Type : MCQ Option Shuffling : No

Correct : 1.0 Wrong : 0.33

The numbers in the matrix given below follow a certain trend row-wise and and/or column wise. Study the trend and choose the number which will replace the question mark?

9	11	21
24	29	?
6	7	14

Options :

1. ✖ 43

2. ✖ 53

3. ✔ 56

Prepp



Latest Sarkari jobs, Govt Exam alerts, Results and Vacancies

- ▶ Latest News and Notification
- ▶ Exam Paper Analysis
- ▶ Topic-wise weightage
- ▶ Previous Year Papers with Answer Key
- ▶ Preparation Strategy & Subject-wise Books

To know more [Click Here](#)



www.prepp.in